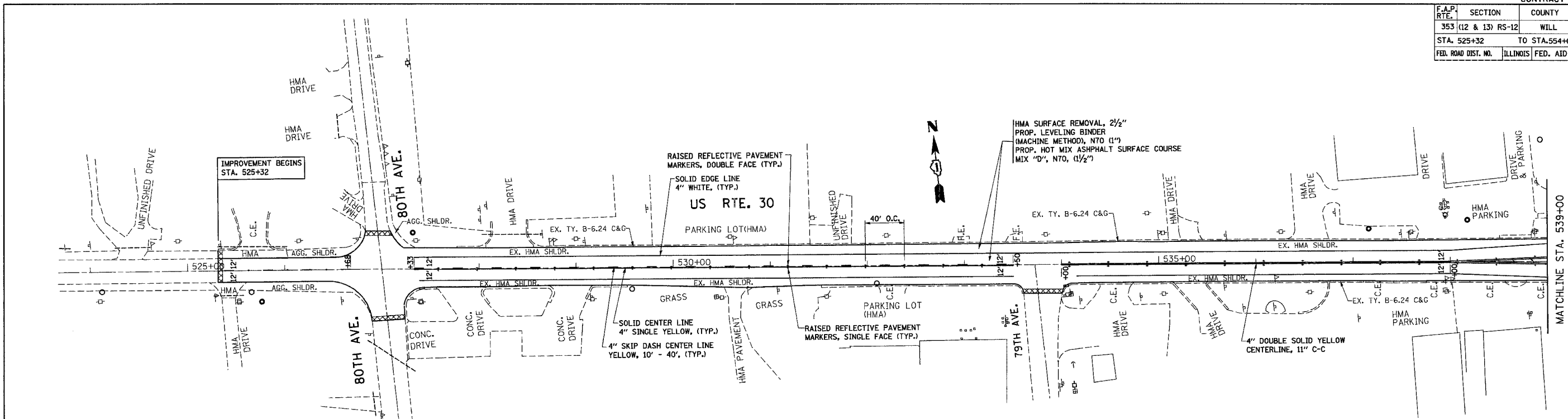


| | | | |
|---------------------|----------|------------------|-----------------|
| CONTRACT NO. 60D08 | | | |
| F.A.P. RTE. | SECTION | COUNTY | TOTAL SHEET NO. |
| 353 (12 & 13) RS-12 | WILL | ILLINOIS | 8 |
| STA. 525+32 | | TO STA. 554+00 | |
| FED. ROAD DIST. NO. | ILLINOIS | FED. AID PROJECT | |



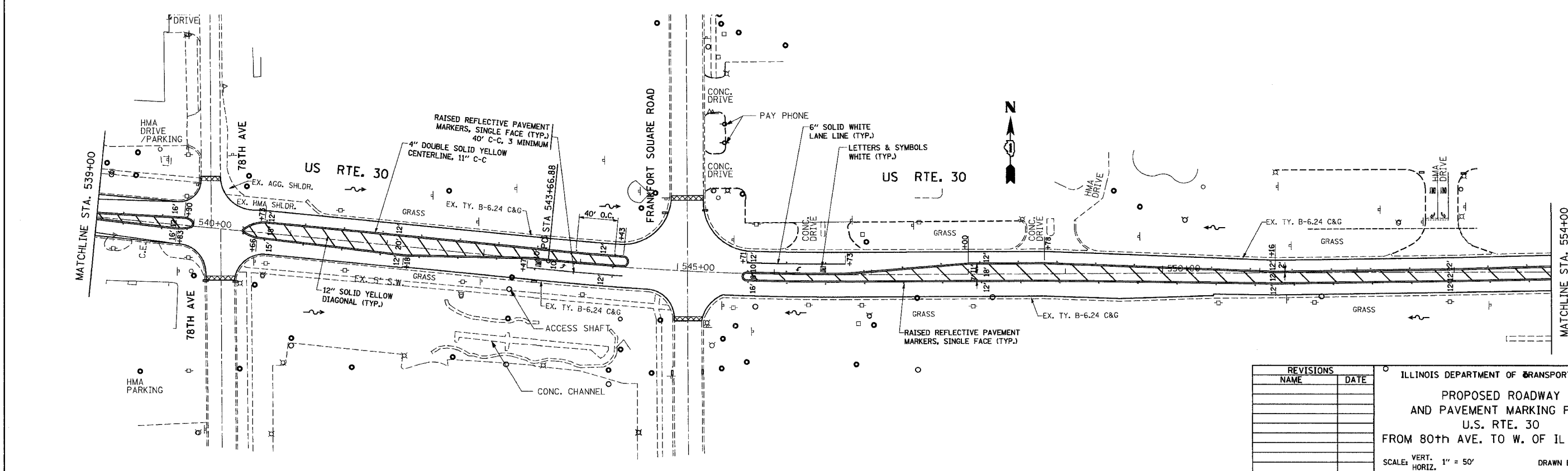
NOTES:

LIMIT OF RESURFACING ON SIDE-STREETS THROUGH OUT THE IMPROVEMENT SHALL BE TO THE RADIUS OF RETURN OR AS DIRECTED BY ENGINEER.

ALL FINAL PAVEMENT MARKINGS SHALL BE THERMOPLASTIC (OF THE EXTRUDED TYPE) AND SHOULD BE PLACED IN ACCORDANCE WITH "DISTRICT ONE TYPICAL PAVEMENT MARKINGS DETAIL," (TC-11)

ALL RAISED REFLECTIVE PAVEMENT MARKERS SHALL BE PLACED IN ACCORDANCE WITH THE DISTRICT ONE "TYPICAL APPLICATIONS RAISED REFLECTIVE PAVEMENT MARKER DETAIL," (TC-11)

4.5' PROPOSED HMA TAPER WITH HMA SURFACE REMOVAL (TYP.)



| REVISIONS | |
|-----------|------|
| NAME | DATE |
| | |
| | |
| | |
| | |
| | |
| | |

ILLINOIS DEPARTMENT OF TRANSPORTATION

PROPOSED ROADWAY AND PAVEMENT MARKING PLAN

U.S. RTE. 30

FROM 80th AVE. TO W. OF IL RTE. 43

SCALE: VERT. 1" = 50'
HORIZ. 1" = 50'

DATE 4/17/2007

DRAWN BY
CHECKED BY

PLT DATE = 4/17/2007
PLT SCALE = 1/8" = 1'-0"
USER NAME = ulrshhd