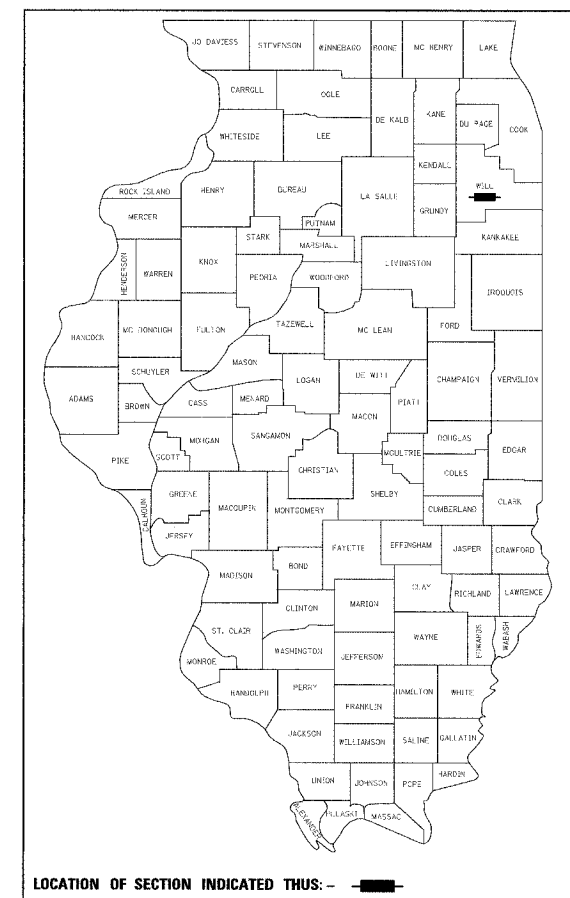


F.A.P. RTE.	SECTION	COUNTY	TOTAL SHEETS	SHEET NO.
353	(12&13) RS-12	WILL	17	1

+2
19

D-91-303-07



LOCATION OF SECTION INDICATED THUS: - ■ -

INDEX OF SHEETS

SHEET NO.	DESCRIPTION
1	COVER SHEET
2	SUMMARY OF QUANTITIES
3-5	TYPICAL SECTIONS
6-9	ROADWAY PLANS AND PAVEMENT MARKINGS
10	DETAILS FOR FRAMES AND LIDS ADJUSTMENT WITH MILLING (BD-2)
11	PAVEMENT PATCHING FOR HMA SURFACED PAVEMENT (BD-22)
11A	CURB OR CURB AND GUTTER REMOVAL AND REPLACEMENT (BD-24)
12	BUTT JOINT AND HMA TAPER DETAILS (BD-32)
12A	METHOD OF FLAGGING (BM-14)
13	TRAFFIC CONTROL AND PROTECTION FOR SIDE ROADS, INTERSECTIONS, AND DRIVEWAYS (TC-10)
14	TYPICAL APPLICATIONS RAISED REFLECTIVE PAVEMENT MARKERS (SNOW-PLow RESISTANT) (TC-11)
15	DISTRICT ONE TYPICAL PAVEMENT MARKINGS (TC-13)
16	PAVEMENT MARKING LETTERS AND SYMBOLS FOR TRAFFIC STAGING (TC-16)
17	ARTERIAL ROAD INFORMATION SIGNING (TC-22)

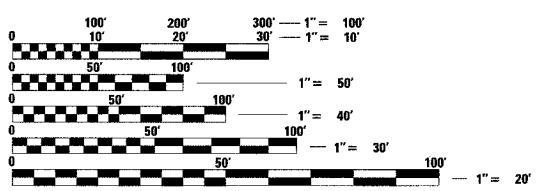
STATE STANDARDS

STANDARD NO.	DESCRIPTION
000001-04	STANDARD SYMBOLS, ABBREVIATIONS AND PATTERNS
442201-02	CLASS C AND D PATCHES
701011-01	OFF-RD MOVING OPERATIONS, 2L, 2W, DAY ONLY
701201-02	LANE CLOSURE, 2L, 2W, DAY ONLY, FOR SPEEDS >=45 MPH
701301-02	LANE CLOSURE, 2L, 2W, SHORT TIME OPERATIONS
701306-01	LANE CLOSURE, 2L, 2W, SLOW MOVING OPERATIONS DAY ONLY, FOR SPEEDS >= 45 MPH
701311-02	LANE CLOSURE, 2L, 2W, MOVING OPERATIONS-DAY ONLY
701501-03	URBAN LANE CLOSURE, 2L, 2W, UNDIVIDED
701502-01	URBAN LANE CLOSURE, 2L, 2W, WITH BIDIRECTIONAL LEFT TURN LANE
702001-06	TRAFFIC CONTROL DEVICES
780001-01	TYPICAL PAVEMENT MARKINGS
781001-02	TYPICAL APPLICATIONS RAISED REFLECTIVE PAVEMENT MARKERS

PROJECT IS LOCATED IN VILLAGE OF FRANKFORT

TRAFFIC DATA

U. S. RTE 30	ADT (2000)	POSTED SPEED
LOCATION 1		
ELSNER TO HACKBERRY	16,000	45
HACKBERRY TO ELM	16,000	40
LOCATION 2		
BOTH TO 78TH	15,000	40
78TH TO PLANK TRAIL DR.	15,000	45
PLANK TRAIL DR. TO IL RTE 43	15,000	55



FULL SIZE PLANS HAVE BEEN PREPARED USING STANDARD ENGINEERING SCALES. REDUCED SIZED PLANS WILL NOT CONFORM TO STANDARD SCALES. IN MAKING MEASUREMENTS ON REDUCED PLANS, THE ABOVE SCALES MAY BE USED.

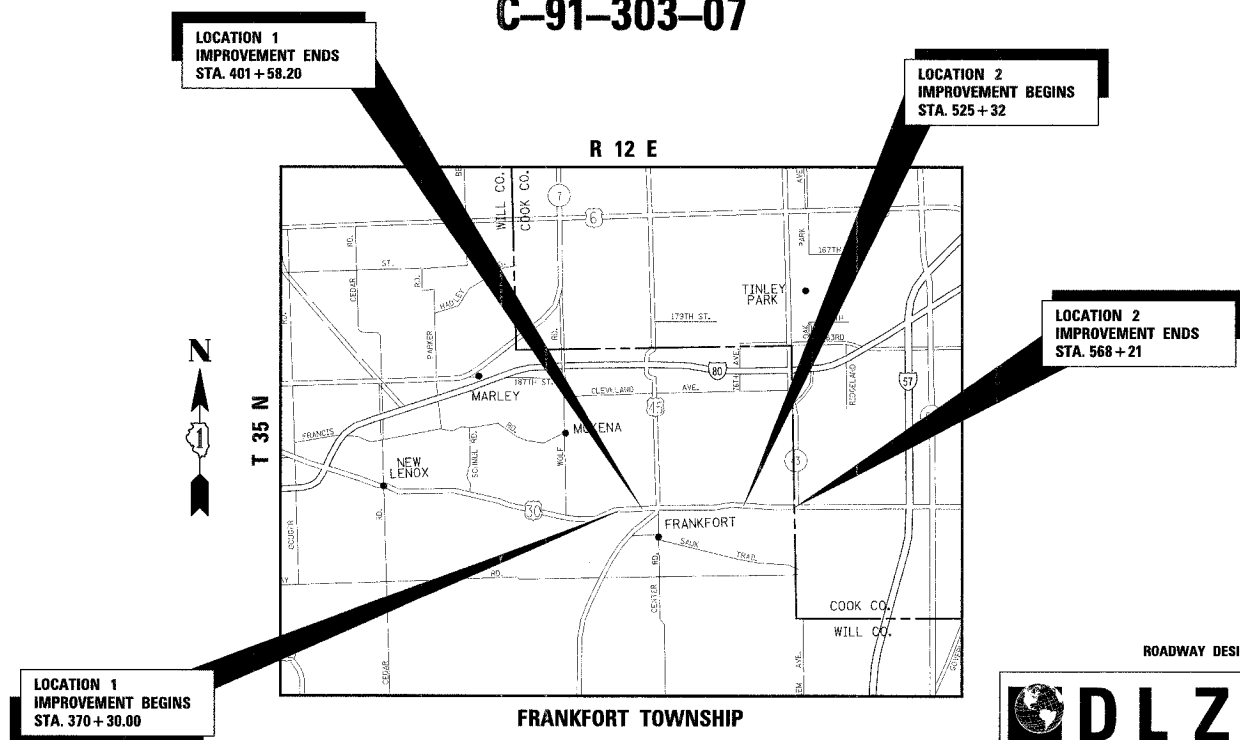
J.U.L.I.E.
JOINT UTILITY LOCATION INFORMATION FOR EXCAVATION
1-800-892-0123

CONTRACT NO. 60D08

**STATE OF ILLINOIS
DEPARTMENT OF TRANSPORTATION
DIVISION OF HIGHWAYS**

**PROPOSED
HIGHWAY PLANS**

**F.A.P. 353 / U.S. 30 (LINCOLN HWY.)
1) ELSNER RD. TO ELM ST.
2) 80TH AVE. TO WEST OF ILL 43
RESURFACING (MAINTENANCE)
SECTION: (12 & 13) RS-12
WILL COUNTY
C-91-303-07**



LOCATION 1
IMPROVEMENT BEGINS
STA. 370+30.00

LOCATION 1
IMPROVEMENT ENDS
STA. 401+58.20

LOCATION 2
IMPROVEMENT BEGINS
STA. 525+32

LOCATION 2
IMPROVEMENT ENDS
STA. 568+21

**LOCATION 1: GROSS LENGTH PROJECT = 3128.2 FEET = 0.592 MILES
NET LENGTH PROJECT = 3128.2 FEET = 0.592 MILES
LOCATION 2: GROSS LENGTH PROJECT = 4289 FEET = 0.812 MILES
NET LENGTH PROJECT = 4289 FEET = 0.812 MILES**

ROADWAY DESIGNED BY

DLZ 85 W. ALGONQUIN, SUITE 220
ARLINGTON HEIGHTS, IL 60005
(847) 640-0840

STATE OF ILLINOIS
Gregory R. Brumm
049218
REGISTERED PROFESSIONAL ENGINEER

SIGNATURE: *Gregory R. Brumm*

SEAL
11-30-07
EXPIRES

STATE OF ILLINOIS
DEPARTMENT OF TRANSPORTATION
DIVISION OF HIGHWAYS

SUBMITTED April 18 2007

Diane O'Keefe DISTRICT ENGINEER

May 11, 2007
Eric E. Haran INTERIM ENGINEER OF DESIGN AND ENVIRONMENT

May 11, 2007
Milton P. Seay, P.E. DIRECTOR, DIVISION OF HIGHWAYS

**PRINTED BY THE AUTHORITY
OF THE STATE OF ILLINOIS**

CONSULTANT SERVICES SECTION DISTRICT ONE - DESIGN / JOSE DOMINGUEZ (847) 705 - 4385

F.A.P. RTE.	SECTION	COUNTY	TOTAL SHEETS	SHEET NO.
353	(12&13)RS-12	WILL	17	2
STA.	TO STA.			
FED. ROAD DIST. NO.	ILLINOIS	FED. AID PROJECT		

SUMMARY OF QUANTITIES

CODE #	ITEM	UNIT	100% STATE TOTAL QUANTITY	CONSTRUCTION TYPE CODE	
				ELSNER TO ELM 1000	80TH TO IL RTE 43 1000
20201006	GRADING AND SHAPING SHOULDERS	UNIT	65	56	9
40600200	BITUMINOUS MATERIALS (PRIME COAT)	TON	17	8	9
40600300	AGGREGATE (PRIME COAT)	TON	138	50	88
40600400	MIXTURE FOR CRACKS, JOINTS, AND FLANGEWAYS	TON	10.8	3.8	7
40600635	LEVELING BINDER (MACHINE METHOD), N70	TON	1962	697	1265
40600895	CONSTRUCTING TEST STRIP	EACH	2	1	1
40600982	HOT-MIX ASPHALT SURFACE REMOVAL - BUTT JOINT	SQ YD	325	185	140
40601005	HOT-MIX ASPHALT REPLACEMENT OVER PATCHES	TON	356	203	153
40603340	HOT-MIX ASPHALT SURFACE COURSE, MIX "D", N70	TON	2959	1061	1898
42101300	PROTECTIVE COAT	SQ YD	27		27
44000159	HOT-MIX ASPHALT SURFACE REMOVAL, 2 1/2"	SQ YD	34634	12634	22000
44001700	COMBINATION CONCRETE CURB AND GUTTER REMOVAL AND REPLACEMENT	FOOT	80		80
44002214	HOT-MIX ASPHALT REMOVAL OVER PATCHES, 3 1/2"	SQ YD	1490	1035	455
44201765	CLASS D PATCHES, TYPE II, 10 INCH	SQ YD	680	590	90
44201769	CLASS D PATCHES, TYPE III, 10 INCH	SQ YD	285	210	75
44201771	CLASS D PATCHES, TYPE IV, 10 INCH	SQ YD	380	90	290
48102100	AGGREGATE WEDGE SHOULDER, TYPE B	TON	271	251	20
55039700	STORM SEWERS TO BE CLEANED	FOOT	200		200
60250200	CATCH BASINS TO BE ADJUSTED	EACH	2		2
60300310	FRAMES AND LIDS TO BE ADJUSTED (SPECIAL)	EACH	8	5	3
67000400	ENGINEER'S FIELD OFFICE, TYPE A	CAL MO	6	3	3
67100100	MOBILIZATION	L SUM	1	0.5	0.5
70100450	TRAFFIC CONTROL AND PROTECTION, STANDARD 701201	L SUM	1	0.5	0.5
70100460	TRAFFIC CONTROL AND PROTECTION, STANDARD 701306	L SUM	1		1
70102620	TRAFFIC CONTROL AND PROTECTION, STANDARD 701501	L SUM	1	0.5	0.5
70102622	TRAFFIC CONTROL AND PROTECTION, STANDARD 701502	L SUM	1	0.5	0.5
70300100	SHORT-TERM PAVEMENT MARKING	FOOT	3212	412	2800.0
70300210	TEMPORARY PAVEMENT MARKING - LETTERS AND SYMBOLS	SQ FT	509	363	146
70300220	TEMPORARY PAVEMENT MARKING - LINE 4"	FOOT	31062	22348	8714
70300240	TEMPORARY PAVEMENT MARKING - LINE 6"	FOOT	2433	1836	597
70300260	TEMPORARY PAVEMENT MARKING - LINE 12"	FOOT	2148	882	1266
70300280	TEMPORARY PAVEMENT MARKING - LINE 24"	FOOT	356	242	114
70301000	WORK ZONE PAVEMENT MARKING REMOVAL	SQ FT	10911	9978	933
* 78000100	THERMOPLASTIC PAVEMENT MARKING - LETTERS AND SYMBOLS	SQ FT	249	103	146
* 78000200	THERMOPLASTIC PAVEMENT MARKING - LINE 4"	FOOT	19888	11174	8714
* 78000400	THERMOPLASTIC PAVEMENT MARKING - LINE 6"	FOOT	1515	918	597
* 78000600	THERMOPLASTIC PAVEMENT MARKING - LINE 12"	FOOT	1707	441	1266.0
* 78000650	THERMOPLASTIC PAVEMENT MARKING - LINE 24"	FOOT	235	121	114
* 78100100	RAISED REFLECTIVE PAVEMENT MARKER	EACH	327	117	210
78300200	RAISED REFLECTIVE PAVEMENT MARKER REMOVAL	EACH	327	120	207
X0322256	TEMPORARY INFORMATION SIGNING	SQ FT	134.4	51.4	83
Z0018500	DRAINAGE STRUCTURES TO BE CLEANED	EACH	3		3

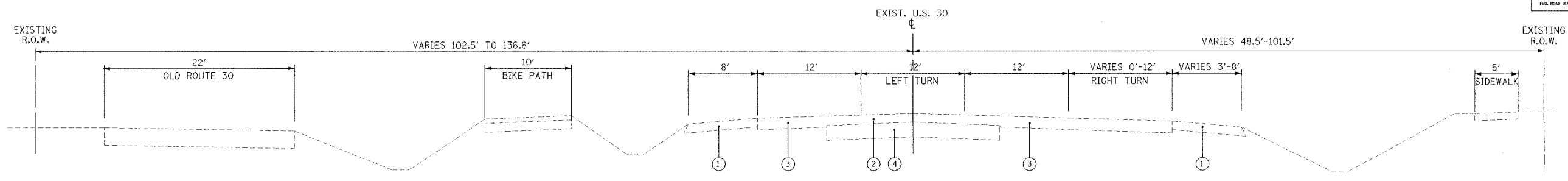
* SPECIALTY ITEM
 ** NON-PARTICIPATING ITEM

REVISIONS		ILLINOIS DEPARTMENT OF TRANSPORTATION SUMMARY OF QUANTITIES U.S. RTE. 30 (LINCOLN HIGHWAY)
NAME	DATE	
		SCALE : 1" = 50' DATE : / / DRAWN BY : BAE CHECKED BY : GB



Rev

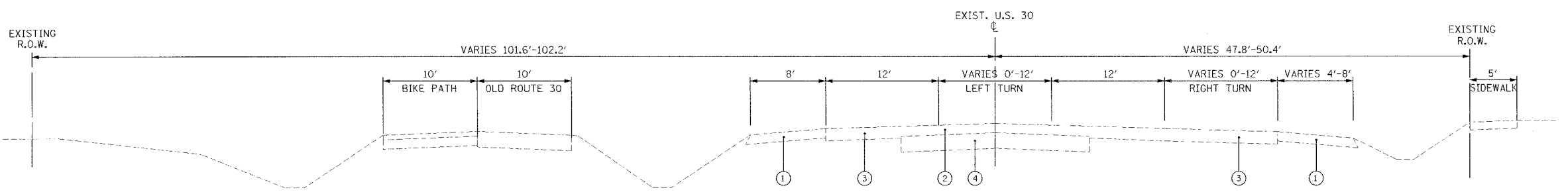
F.A.P. RTE.	SECTION	COUNTY	TOTAL SHEETS	SHEET NO.
353	(12&13) RS-12	WILL	17	3
STA.	TO STA.			
FED. ROAD DIST. NO.	ADDRESS	FED. AID PROJECT		



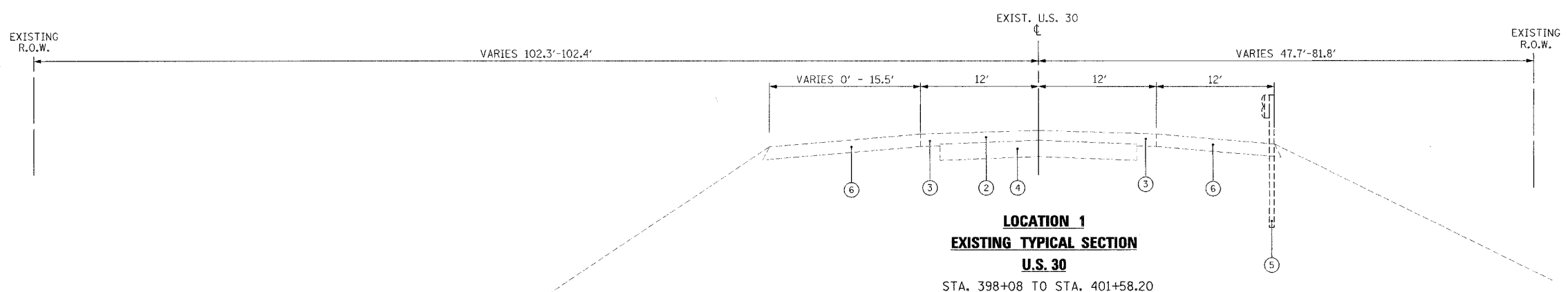
LOCATION 1
EXISTING TYPICAL SECTION
U.S. 30
 STA. 370+30 TO STA. 372+03

LEGEND

- ① EX. AGGREGATE SHOULDER
- ② EX. HMA PAVEMENT, 6"±
- ③ EX. HMA PAVEMENT, 7"±
- ④ EX. CONCRETE PAVEMENT, 10"±
- ⑤ EX. GUARDRAIL
- ⑥ EX. HMA SHOULDER, 7"±



LOCATION 1
EXISTING TYPICAL SECTION
U.S. 30
 STA. 372+03 TO STA. 398+08

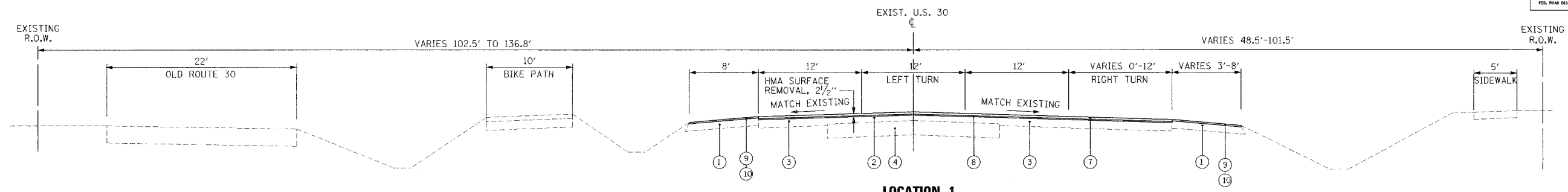


LOCATION 1
EXISTING TYPICAL SECTION
U.S. 30
 STA. 398+08 TO STA. 401+58.20

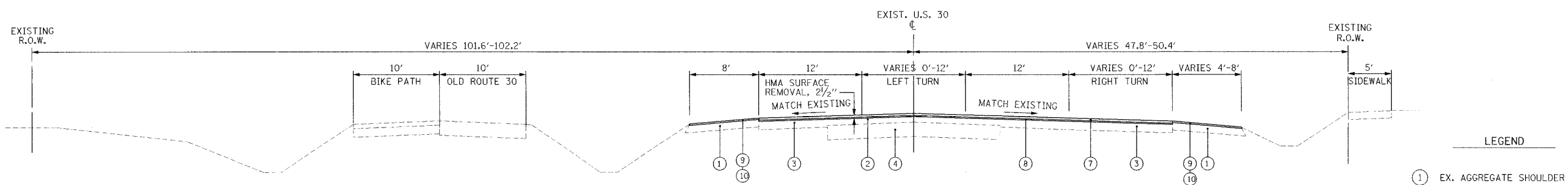
REVISIONS		ILLINOIS DEPARTMENT OF TRANSPORTATION LOCATION 1 TYPICAL SECTIONS EXISTING U.S. RTE. 30 (LINCOLN HWY.) SCALE : 1" = NTS DATE : / /
NAME	DATE	
		DRAWN BY : BEC CHECKED BY : GB



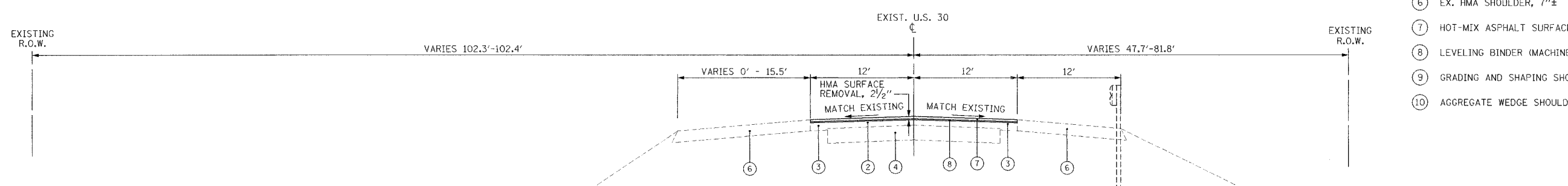
F.A.P. RTE.	SECTION	COUNTY	TOTAL SHEETS	SHEET NO.
353 (12&13)	RS-12	WILL	17	4
STA.	TO STA.			
FED. ROAD DIST. NO.	DATE	FED. AID PROJECT		



LOCATION 1
PROPOSED TYPICAL SECTION
U.S. 30
 STA. 379+30 TO STA. 372+03



LOCATION 1
PROPOSED TYPICAL SECTION
U.S. 30
 STA. 372+03 TO STA. 398+08



LOCATION 1
PROPOSED TYPICAL SECTION
U.S. 30
 STA. 398+08 TO STA. 401+58.20

LEGEND

- ① EX. AGGREGATE SHOULDER
- ② EX. HMA PAVEMENT, 6"±
- ③ EX. HMA PAVEMENT, 7"±
- ④ EX. CONCRETE PAVEMENT, 10"±
- ⑤ EX. GUARDRAIL
- ⑥ EX. HMA SHOULDER, 7"±
- ⑦ HOT-MIX ASPHALT SURFACE COURSE, MIX "D", N70 (1 1/2")
- ⑧ LEVELING BINDER (MACHINE METHOD), N70 (1")
- ⑨ GRADING AND SHAPING SHOULDERS
- ⑩ AGGREGATE WEDGE SHOULDER, TYPE B

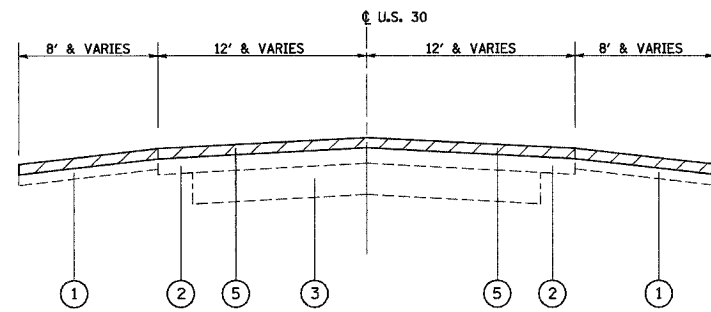
HOT-MIX ASPHALT MIXTURE REQUIREMENTS		
MIXTURE TYPE	AC TYPE	AIR VOIDS
HOT-MIX ASPHALT SURFACE COURSE, MIX "D", N70 (IL 9.5 mm)	PG 64-22	4% @ 70 Gyr
LEVELING BINDER (MACHINE METHOD), N70 (IL 9.5 mm)	PG 58-22	4% @ 70 Gyr
CLASS D PATCHES (HMA BINDER IL-19, N70)	PG 64-22*	4% @ 70 Gyr
HMA REPLACEMENT OVER PATCHES	PG 64-22*	4% @ 70 Gyr

* WHEN RAP EXCEEDS 20%, THE NEW ASPHALT BINDER IN THE MIX SHALL BE PG 58-22.
 THE UNIT WEIGHT USED TO CALCULATE ALL HMA SURFACE MIXTURE QUANTITIES IS 112 LBS./SQ. YD./IN.

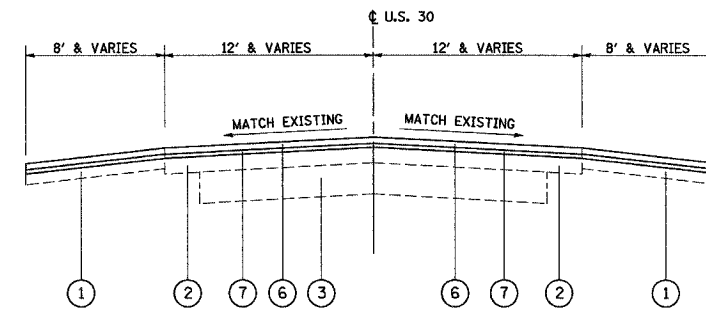
REVISIONS		ILLINOIS DEPARTMENT OF TRANSPORTATION
NAME	DATE	
		LOCATION 1 TYPICAL SECTIONS PROPOSED U.S. RTE. 30 (LINCOLN HWY.) SCALE : 1" = NTS DATE : / / DRAWN BY : BEC CHECKED BY : GB



CONTRACT NO. 6008				
F.A.P. RTE.	SECTION	COUNTY	TOTAL SHEETS	SHEET NO.
353	(12 & 13) RS-12	WILL	17	5
STA.		TO STA.		
FED. ROAD DIST. NO.		ILLINOIS FED. AID PROJECT		



LOCATION #2
EXISTING TYPICAL SECTION
U.S. 30
STATION 525+32 TO STATION 527+00
STATION 566+00 TO STATION 568+40



LOCATION #2
PROPOSED TYPICAL SECTION
U.S. 30
STATION 525+32 TO STATION 527+00
STATION 566+00 TO STATION 568+40

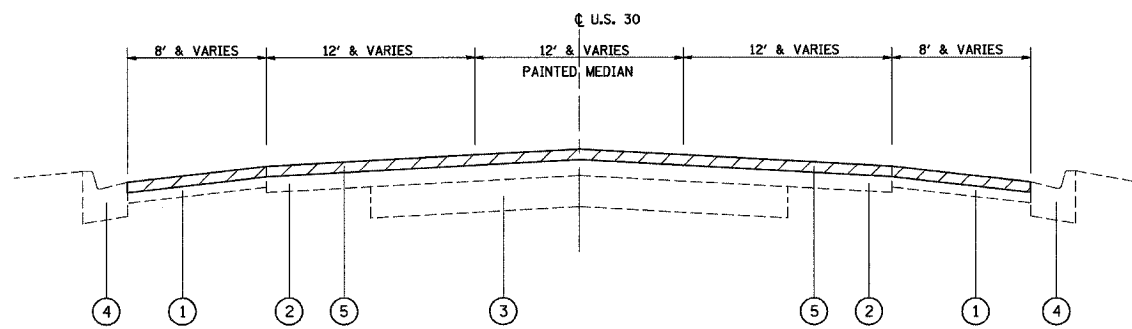
HOT-MIX ASPHALT MIXTURE REQUIREMENTS

MIXTURE TYPE	AC TYPE	AIR VOIDS
HOT-MIX ASPHALT SURFACE COURSE, MIC "D", N70 (IL 9.5 mm)	PG 64-22	4% @ 70 Gyr
LEVELING BINDER (MACHINE METHOD), N70 (IL 9.5 mm)	PG 58-22	4% @ 70 Gyr
CLASS D PATCHES (HMA BINDER IL-19, N70)	PG 64-22*	4% @ 70 Gyr
HMA REPLACEMENT OVER PATCHES	PG 64-22*	4% @ 70 Gyr

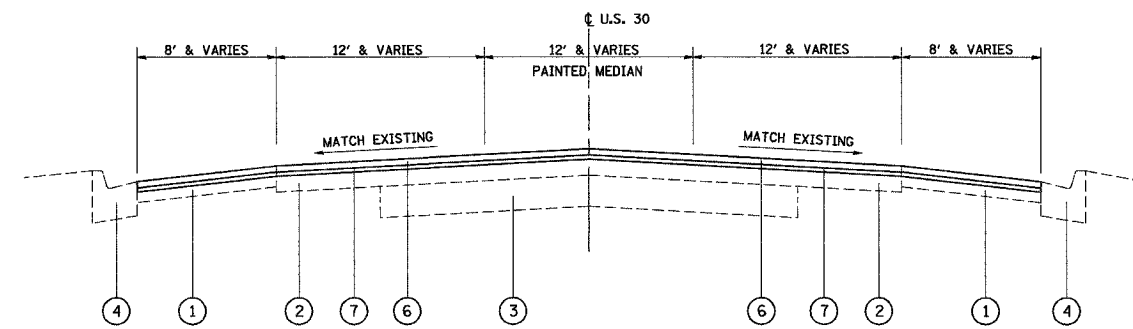
* WHEN RAP EXCEEDS 20%, THE NEW ASPHALT BINDER IN THE MIX SHALL BE PG 58-22
THE UNIT WEIGHT USED TO CALCULATE ALL HMA SURFACE MIXTURE QUANTITIES IS 112 LBS./SQ. YD. YD./IN.

LEGEND

- ① EXISTING HMA SHOULDER, 7"±
- ② EXISTING HMA PAVEMENT, 7"±
- ③ EXISTING CONCRETE PAVEMENT, 10"±
- ④ EXISTING CURB & GUTTER
- ⑤ PROPOSED HMA SURFACE REMOVAL, 2 1/2"
- ⑥ PROPOSED HOT-MIX ASPHALT SURFACE COURSE, MIX "D", N70, 1 1/2"
- ⑦ PROPOSED LEVELING BINDER (MACHINE METHOD), N70 (1")



LOCATION #2
EXISTING TYPICAL SECTION
U.S. 30
STATION 527+00 TO STATION 566+00



LOCATION #2
PROPOSED TYPICAL SECTION
U.S. 30
STATION 527+00 TO STATION 566+00

PLT DATE = 4/17/2007
FILE NAME = c:\pav\proj\6008\6008\6008.dwg
USER NAME = ulmshhd

REVISIONS	
NAME	DATE

ILLINOIS DEPARTMENT OF TRANSPORTATION

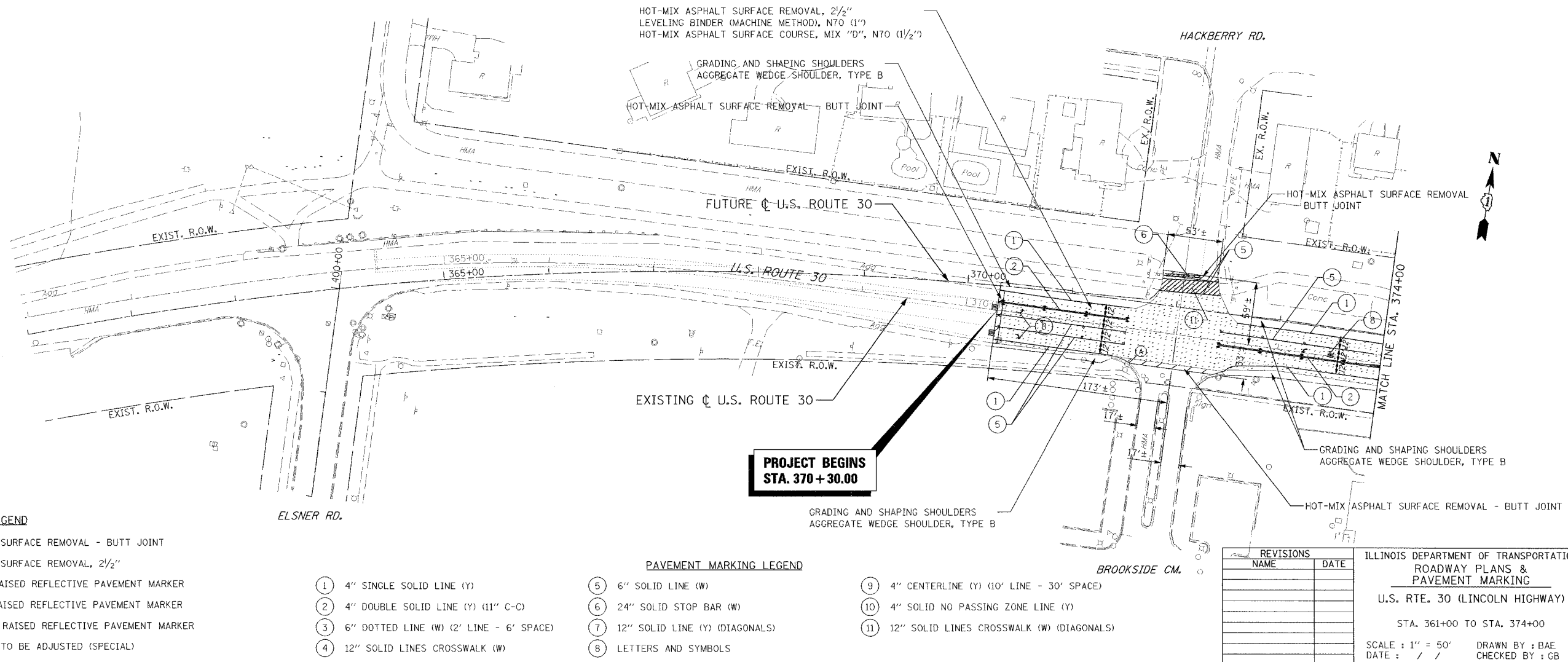
LOCATION #2
TYPICAL SECTIONS
U.S. RTE. 30 (LINCOLN HWY.)
FROM 80th AVE. TO W. OF IL RTE. 43

SCALE: VERT. 1" = 50'
HORIZ. 1" = 50'
DATE 4/17/2007
DRAWN BY
CHECKED BY

F.A.P. RTE.	SECTION	COUNTY	TOTAL SHEETS	SHEET NO.
353 (12&13)	RS-12	WILL	17	6
STA. 361+00		TO STA. 374+00		
FEL. ROAD EST. NO.	BLINDS	FEL. AD. PROJECT		

GENERAL NOTES

- BEFORE STARTING ANY EXCAVATION, THE CONTRACTOR SHALL CALL "J.U.L.I.E." AT (800) 892-0123 FOR FIELD LOCATIONS OF BURIED ELECTRIC, TELEPHONE AND GAS UTILITIES. (48 HOUR NOTIFICATION IS REQUIRED.)
- THE CONTRACTOR WILL NOT BE ALLOWED TO SET UP A YARD OR FIELD OFFICE ON STATE PROPERTY WITHOUT WRITTEN PERMISSION FROM THE DEPARTMENT.
- ANY PAVEMENT MARKINGS AND RAISED REFLECTIVE PAVEMENT MARKERS OBLITERATED BY MILLING AND RESURFACING OPERATIONS ON SIDE STREETS AND ENTRANCES SHALL BE REPLACED AND PAID FOR IN KIND.
- BEFORE BEGINNING ANY WORK, THE CONTRACTOR SHALL RETAIN AND RECORD (FOR FUTURE REFERENCES), ALL EXISTING PAVEMENT MARKING LINES IN ORDER THAT THESE LOCATIONS CAN BE RE-ESTABLISHED FOR STRIPING. EXACT LOCATIONS OF ALL STRIPING SHALL BE AS DIRECTED BY THE ENGINEER.
- ALL PAVEMENT PATCHING LOCATIONS WILL BE DETERMINED IN THE FIELD BY THE ENGINEER.
- FRAMES AND GRATES ADJUSTMENT OF PRIVATE UTILITIES WITHIN THE LIMITS OF THE IMPROVEMENTS SHALL BE DONE BY THEIR RESPECTIVE OWNERS AND ARE NOT PART OF THIS PROJECT.
- THE RESIDENT ENGINEER SHALL CONTACT THE DISTRICT ONE TRAFFIC CONTROL SUPERVISOR AT (847) 705-4470 A MINIMUM OF 72 HOURS PRIOR TO THE PLACEMENT OF ANY TEMPORARY TRAFFIC CONTROL DEVICES.
- THE CONTRACTOR SHALL BE REQUIRED TO PROVIDE ACCESS TO ABUTTING PROPERTY AT ALL TIMES DURING THE CONSTRUCTION OF THIS PROJECT.
- DO NOT SCALE PLANS FOR CONSTRUCTION DIMENSIONS.
- DOUBLE LANE MARKERS ARE TO BE USED AS SHOWN ON THE DISTRICT ONE DETAIL FOR TYPICAL APPLICATION OF RAISED REFLECTIVE PAVEMENT MARKERS (SNOW-PLOW RESISTANT) SHOWN IN THE PLANS.
- PAVEMENT MARKING TAPE, TYPE III SHALL BE USED FOR SHORT TERM PAVEMENT MARKINGS ON ALL FINAL SURFACES. THE COST OF THE PAVEMENT MARKING TAPE, TYPE III AND IT'S REMOVAL SHALL BE INCLUDED IN THE COST OF SHORT TERM PAVEMENT MARKING.
- WHEN MILLED PAVEMENT IS OPEN TO TRAFFIC THE MAXIMUM GRADE DIFFERENTIAL BETWEEN PASSES OF THE MILLING MACHINE SHALL NOT EXCEED 1/2 INCHES WHERE THE SPEED LIMIT IS 45 MPH OR LESS AND 1 INCH WHERE THE SPEED LIMIT IS GREATER THAN 45 MPH. WITH WRITTEN APPROVAL FROM THE ENGINEER, A MAXIMUM GRADE DIFFERENTIAL OF 3 INCHES MAY BE ALLOWED IF THE EDGE OF THE MILLING IS SLOPED A MINIMUM 1:3 (V:H).
- BUTT JOINTS WILL BE INSTALLED AT THE ENDS OF ALL RESURFACING (WHERE RESURFACING MEETS EXISTING PAVEMENT), IN ACCORDANCE WITH THE "BUTT JOINT AND HOT-MIX ASPHALT TAPER DETAILS" SHEET INCLUDED IN THE PLANS, UNLESS OTHERWISE SPECIFIED.
- IT SHALL BE THE CONTRACTORS RESPONSIBILITY TO VERIFY ALL DIMENSIONS AND CONDITIONS EXISTING IN THE FIELD PRIOR TO CONSTRUCTION AND ORDERING OF MATERIALS.
- THE CONTRACTOR SHALL COORDINATE CONSTRUCTION ACTIVITIES WITH UTILITY COMPANIES.
- THE ENGINEER SHALL CONTACT THE TRAFFIC FIELD ENGINEER TWO WEEKS PRIOR TO THE START OF THIS PROJECT SO THAT EXACT STATIONING OF PERMANENT PAVEMENT MARKINGS MAY BE ESTABLISHED.
- UNLESS OTHER CONDITIONS WARRANT EXTENDED LANE CLOSURES, AS DETERMINED AND APPROVED IN WRITING BY THE ENGINEER OR AS PROVIDED FOR IN THE CONTRACT SPECIFICATIONS, OVERNIGHT LANE CLOSURES SHALL NOT BE ALLOWED.
- LIMIT OF RESURFACING ON SIDE-STREETS THROUGH OUT THE IMPROVEMENT SHALL BE TO THE RADIUS OF RETURN OR AS DIRECTED BY THE ENGINEER.
- ALL FINAL PAVEMENT MARKINGS SHALL BE THERMOPLASTIC AND SHOULD BE PLACED IN ACCORDANCE WITH "DISTRICT ONE TYPICAL PAVEMENT MARKINGS" DETAIL, (TC-13).



LEGEND

	HOT-MIX ASPHALT SURFACE REMOVAL - BUTT JOINT
	HOT-MIX ASPHALT SURFACE REMOVAL, 2 1/2"
	TWO-WAY AMBER RAISED REFLECTIVE PAVEMENT MARKER
	ONE-WAY AMBER RAISED REFLECTIVE PAVEMENT MARKER
	ONE-WAY CRYSTAL RAISED REFLECTIVE PAVEMENT MARKER
	FRAMES AND LIDS TO BE ADJUSTED (SPECIAL)

PAVEMENT MARKING LEGEND

	4" SINGLE SOLID LINE (Y)		6" SOLID LINE (W)
	4" DOUBLE SOLID LINE (Y) (11" C-C)		24" SOLID STOP BAR (W)
	6" DOTTED LINE (W) (2' LINE - 6' SPACE)		12" SOLID LINE (Y) (DIAGONALS)
	12" SOLID LINES CROSSWALK (W)		LETTERS AND SYMBOLS

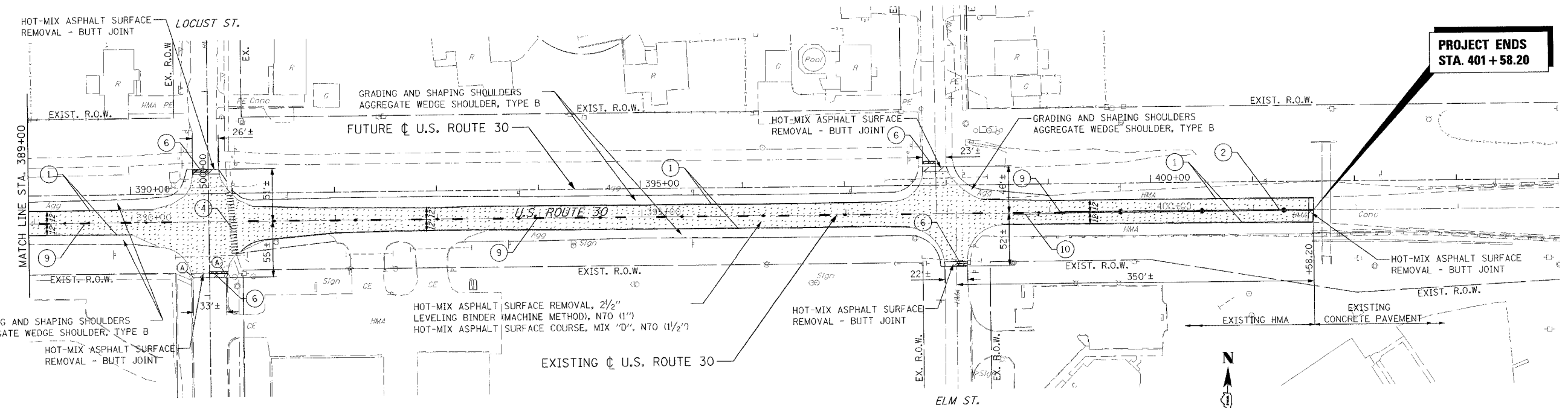
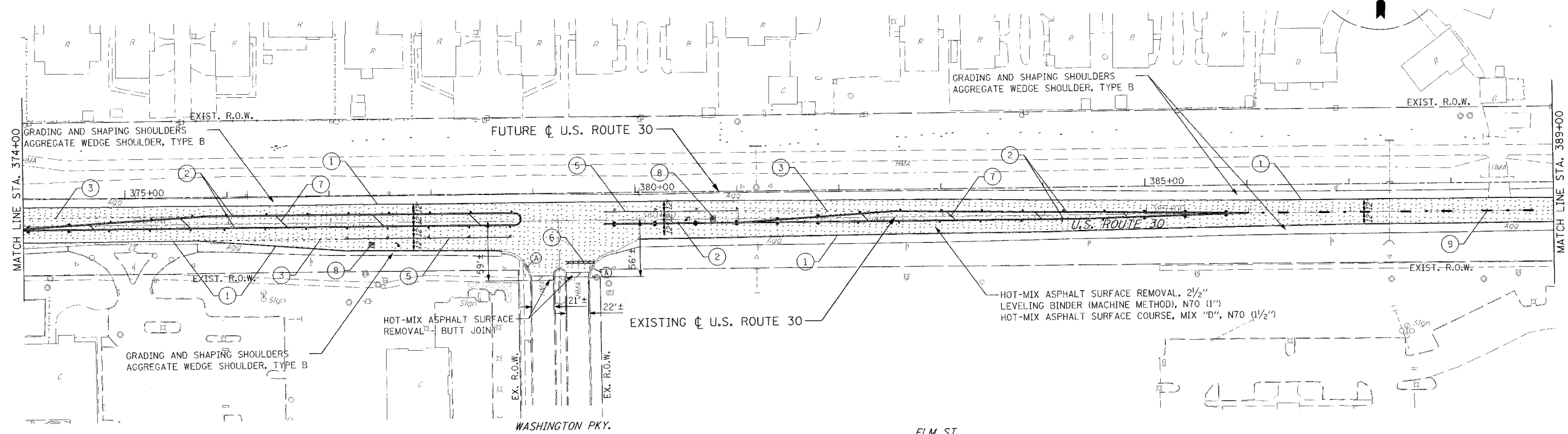
REVISIONS

NAME	DATE

ILLINOIS DEPARTMENT OF TRANSPORTATION
ROADWAY PLANS & PAVEMENT MARKING
U.S. RTE. 30 (LINCOLN HIGHWAY)
STA. 361+00 TO STA. 374+00
SCALE : 1" = 50'
DATE : / /
DRAWN BY : BAE
CHECKED BY : GB



CONTRACT NO. 60D08				
F.A.P. RTE.	SECTION	COUNTY	TOTAL SHEETS	SHEET NO.
353 (12&13)	RS-12	WILL	17	7
STA. 374+00		TO STA. 404+00		
FED. ROAD DIST. NO.	ILLINOIS	FED. AID PROJECT		



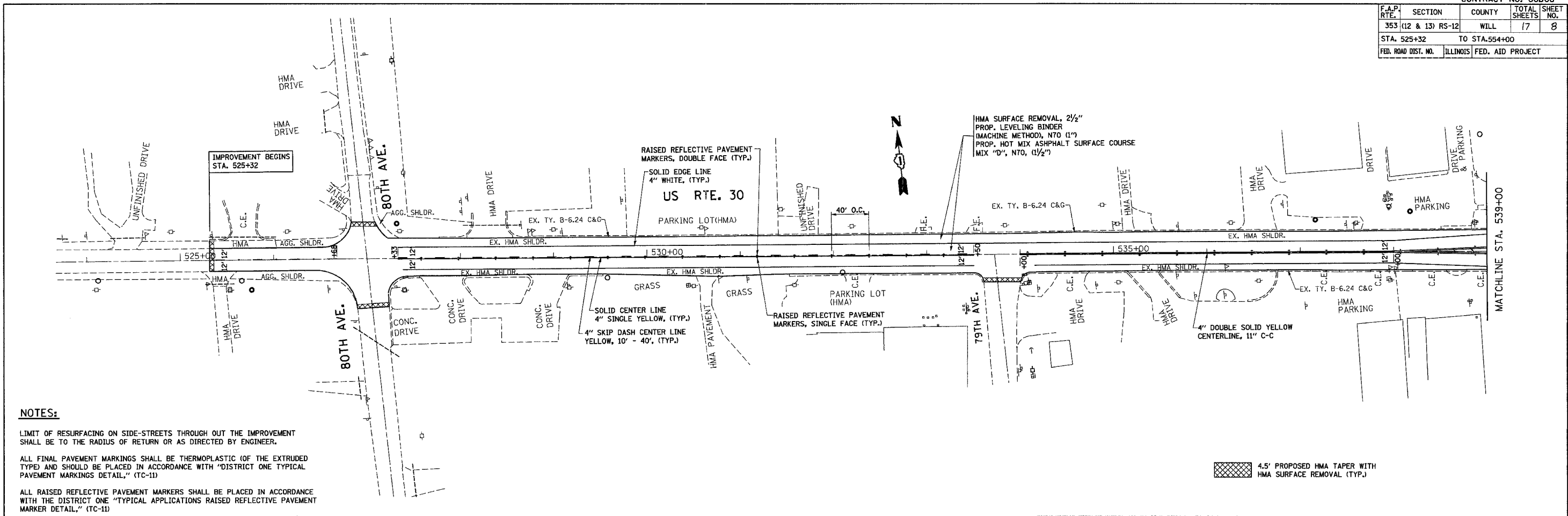
- LEGEND**
- HOT-MIX ASPHALT SURFACE REMOVAL - BUTT JOINT
 - HOT-MIX ASPHALT SURFACE REMOVAL, 2 1/2"
 - TWO-WAY AMBER RAISED REFLECTIVE PAVEMENT MARKER
 - ONE-WAY AMBER RAISED REFLECTIVE PAVEMENT MARKER
 - ONE-WAY CRYSTAL RAISED REFLECTIVE PAVEMENT MARKER
 - FRAMES AND LIDS TO BE ADJUSTED (SPECIAL)

- PAVEMENT MARKING LEGEND**
- ① 4" SINGLE SOLID LINE (Y)
 - ② 4" DOUBLE SOLID LINE (Y) (11" C-C)
 - ③ 6" DOTTED LINE (W) (2' LINE - 6' SPACE)
 - ④ 12" SOLID LINES CROSSWALK (W)
 - ⑤ 6" SOLID LINE (W)
 - ⑥ 24" SOLID STOP BAR (W)
 - ⑦ 12" SOLID LINE (Y) (DIAGONALS)
 - ⑧ LETTERS AND SYMBOLS
 - ⑨ 4" CENTERLINE (Y) (10' LINE - 30' SPACE)
 - ⑩ 4" SOLID NO PASSING ZONE LINE (Y)
 - ⑪ 12" SOLID LINES CROSSWALK (W) (DIAGONALS)

REVISIONS		ILLINOIS DEPARTMENT OF TRANSPORTATION ROADWAY PLANS & PAVEMENT MARKING
NAME	DATE	
		U.S. RTE. 30 (LINCOLN HIGHWAY) STA. 374+00 TO STA. 404+00 SCALE : 1" = 50' DRAWN BY : BAE DATE : / / CHECKED BY :



CONTRACT NO. 60D08			
F.A.P. RTE.	SECTION	COUNTY	TOTAL SHEET NO.
353 (12 & 13) RS-12	WILL	ILLINOIS	8
STA. 525+32		TO STA. 554+00	
FED. ROAD DIST. NO.	ILLINOIS	FED. AID PROJECT	



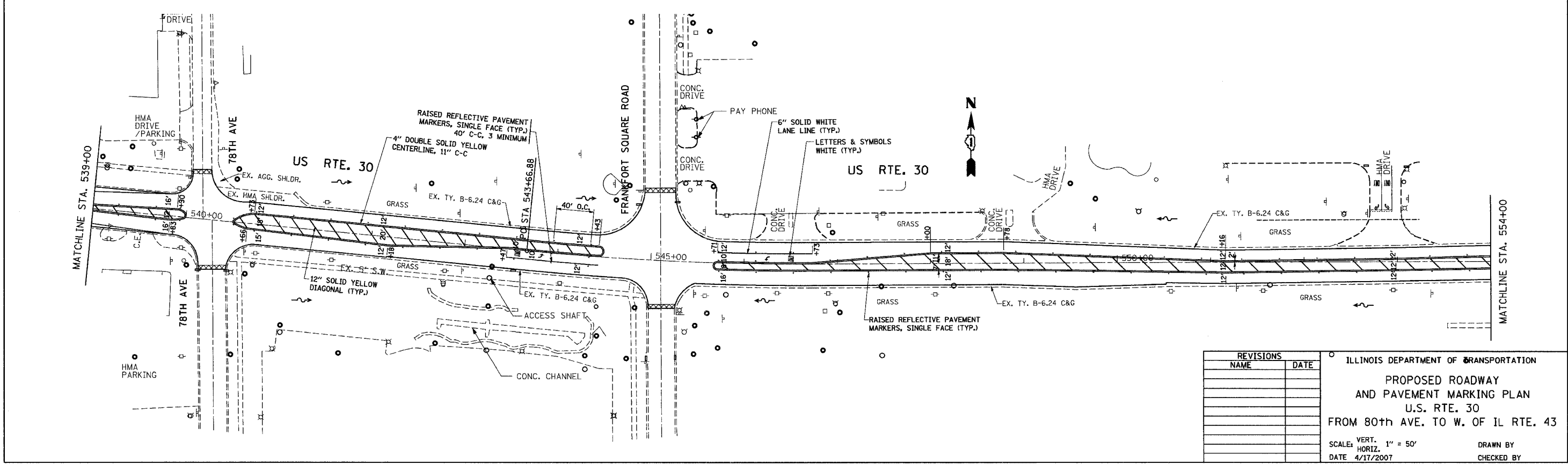
NOTES:

LIMIT OF RESURFACING ON SIDE-STREETS THROUGH OUT THE IMPROVEMENT SHALL BE TO THE RADIUS OF RETURN OR AS DIRECTED BY ENGINEER.

ALL FINAL PAVEMENT MARKINGS SHALL BE THERMOPLASTIC (OF THE EXTRUDED TYPE) AND SHOULD BE PLACED IN ACCORDANCE WITH "DISTRICT ONE TYPICAL PAVEMENT MARKINGS DETAIL," (TC-11)

ALL RAISED REFLECTIVE PAVEMENT MARKERS SHALL BE PLACED IN ACCORDANCE WITH THE DISTRICT ONE "TYPICAL APPLICATIONS RAISED REFLECTIVE PAVEMENT MARKER DETAIL," (TC-11)

4.5' PROPOSED HMA TAPER WITH HMA SURFACE REMOVAL (TYP.)

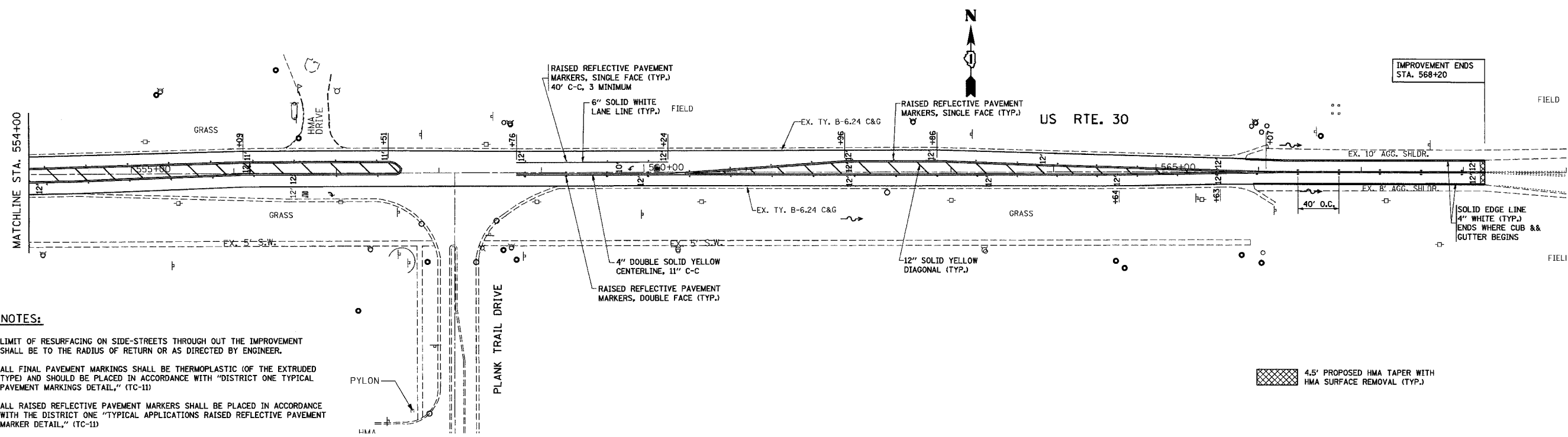


REVISIONS	
NAME	DATE

ILLINOIS DEPARTMENT OF TRANSPORTATION
 PROPOSED ROADWAY
 AND PAVEMENT MARKING PLAN
 U.S. RTE. 30
 FROM 80th AVE. TO W. OF IL RTE. 43
 SCALE: VERT. 1" = 50'
 HORIZ. 1" = 50'
 DATE 4/17/2007
 DRAWN BY
 CHECKED BY

PLOT DATE = 4/17/2007
 PLOT SCALE = 1/8" = 1'-0"
 USER NAME = ulrshhd

F.A.P. RTE.	SECTION	COUNTY	TOTAL SHEETS	SHEET NO.
353	(12 & 13) RS-12	WILL	17	9
STA. 554+00		TO STA. 568+20		
FED. ROAD DIST. NO.		ILLINOIS	FED. AID PROJECT	



NOTES:

LIMIT OF RESURFACING ON SIDE-STREETS THROUGH OUT THE IMPROVEMENT SHALL BE TO THE RADIUS OF RETURN OR AS DIRECTED BY ENGINEER.

ALL FINAL PAVEMENT MARKINGS SHALL BE THERMOPLASTIC (OF THE EXTRUDED TYPE) AND SHOULD BE PLACED IN ACCORDANCE WITH "DISTRICT ONE TYPICAL PAVEMENT MARKINGS DETAIL," (TC-11)

ALL RAISED REFLECTIVE PAVEMENT MARKERS SHALL BE PLACED IN ACCORDANCE WITH THE DISTRICT ONE "TYPICAL APPLICATIONS RAISED REFLECTIVE PAVEMENT MARKER DETAIL," (TC-11)

4.5' PROPOSED HMA TAPER WITH HMA SURFACE REMOVAL (TYP.)

PLOT DATE = 4/17/2007
 FILE NAME = c:\pms\m05a\353087\pl_rdw\pdrn
 USER NAME = ultrachd

REVISIONS	
NAME	DATE

ILLINOIS DEPARTMENT OF TRANSPORTATION

PROPOSED ROADWAY AND PAVEMENT MARKING PLAN

U.S. RTE. 30

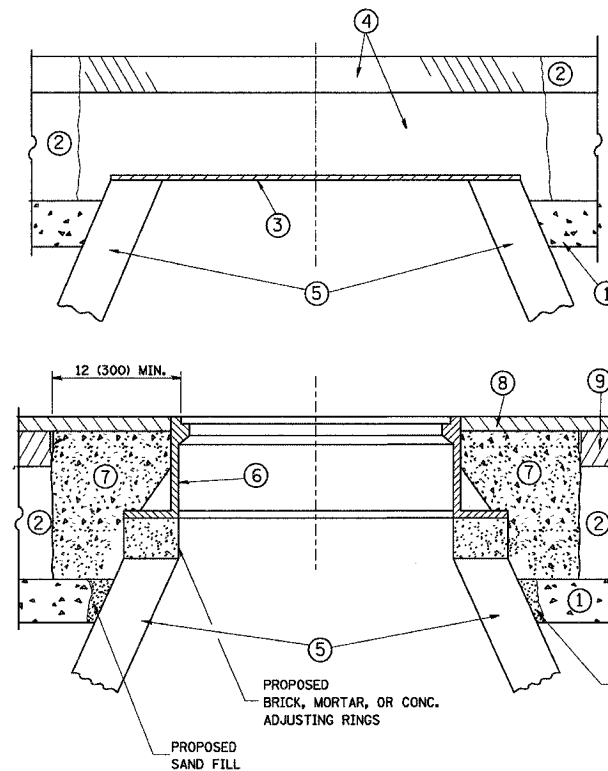
FROM 80th AVE. TO W. OF IL RTE. 43

SCALE: VERT. 1" = 50'
 HORIZ. 1" = 50'

DATE 4/17/2007

DRAWN BY
 CHECKED BY

F.A. RTE.	SECTION	COUNTY	TOTAL SHEETS	SHEET NO.
353	*	WILL	17	10
STA. TO STA.		FED. ROAD DIST. NO. 1 ILLINOIS FED. AID PROJECT		
* (12 & 13) R5-12				



CONSTRUCTION PROCEDURES

STAGE 1 (BEFORE PAVEMENT MILLING)

- A) REMOVE A MINIMUM OF 12 (300) OF THE PAVEMENT FROM AROUND THE STRUCTURE.
- B) REMOVE THE EXISTING FRAME AND LID FROM THE STRUCTURE.
- C) COVER THE STRUCTURE OPENING WITH A 36 (900) DIAMETER METAL PLATE.
- D) BACKFILL WITH CRUSHED STONE AND A MINIMUM 1/2 (40) THICK HMA SURFACE MIX APPROVED BY THE ENGINEER.

STAGE 2 (AFTER PAVEMENT MILLING)

- A) REMOVE THE HMA SURFACE MIX AND CRUSHED STONE.
- B) INSTALL THE FRAME AND LID; ADJUST THE FRAME TO ITS FINAL SURFACE ELEVATION.
- C) THE SURROUNDING SPACE SHALL BE FILLED WITH CLASS SI CONCRETE, OR HMA SURFACE COURSE OR HMA BINDER COURSE TO THE ELEVATION OF THE SURFACE OF THE EXISTING BASE COURSE OR THE BINDER COURSE.

THE PROCEDURE EXPLAINED ABOVE SHALL CONFORM TO THE APPLICABLE PORTIONS OF SECTIONS 353, 406, 602, AND 603 OF THE STANDARD SPECIFICATIONS.

LEGEND

- | | |
|--|--|
| ① SUB-BASE GRANULAR MATERIAL | ⑥ FRAME AND LID (SEE NOTES) |
| ② EXISTING PAVEMENT | ⑦ CLASS SI CONCRETE, HMA SURFACE COURSE OR HMA BINDER COURSE |
| ③ 36 (900) DIAMETER METAL PLATE | ⑧ PROPOSED HMA SURFACE COURSE |
| ④ PROPOSED CRUSHED STONE AND HMA SURFACE MIX | ⑨ PROPOSED HMA BINDER COURSE |
| ⑤ EXISTING STRUCTURE | |

LOCATION OF STRUCTURES:

THE CONTRACTOR WILL BE REQUIRED TO KEEP A RECORD OF THE LOCATIONS OF THE BURIED STRUCTURES ACCORDING TO THE STATION AND DISTANCE LEFT OR RIGHT OF THE CENTERLINE OF PAVEMENT. UPON COMPLETION OF THE WORK, THE CONTRACTOR WILL DELIVER THE RECORD TO THE ENGINEER.

BASIS OF PAYMENT: THIS WORK WILL BE PAID FOR AT THE CONTRACT UNIT PRICE PER EACH FOR "FRAMES AND LIDS TO BE ADJUSTED, SPECIAL"
NEW FRAMES AND LIDS, WHEN SPECIFIED, WILL BE PAID FOR SEPARATELY.

NOTES:

EXISTING BROKEN FRAMES AND LIDS SHALL BE REMOVED AND DISPOSED OF BY THE CONTRACTOR AND SHALL BE REPLACED AS DIRECTED BY THE ENGINEER. REPLACEMENT FRAMES AND LIDS WILL BE PAID FOR IN ACCORDANCE WITH ARTICLE 109.04 OF THE STANDARD SPECIFICATIONS UNLESS A SEPARATE PAY ITEM HAS BEEN PROVIDED.

IF THE EXISTING LIDS ARE OPEN, THE FRAME WILL BE ADJUSTED TO THE ELEVATION OF THE MILLED PAVEMENT SURFACE PRIOR TO THE MILLING OPERATION. THE FRAME WILL NOT BE REMOVED AND COVERED BY THE METAL PLATE.

CITY OF CHICAGO CASTINGS ARE THE PROPERTY OF THE CITY AND THE CONTRACTOR SHALL NOTIFY THE CITY FOR REMOVAL AND DISPOSITION OF THE CASTINGS.

THE METAL PLATE USED TO COVER THE STRUCTURE SHALL REMAIN THE PROPERTY OF THE CONTRACTOR.

WHEN STRUCTURES ARE TO BE ADJUSTED OR RECONSTRUCTED, THE LOWERING AND RAISING OF THE FRAMES AND LIDS WILL NOT BE PAID FOR SEPARATELY BUT WILL BE INCLUDED IN THE COST OF THE CORRESPONDING PAY ITEM.

DETAILS FOR FRAMES AND LIDS ADJUSTMENT WITH MILLING

ALL DIMENSIONS ARE IN INCHES (MILLIMETERS) UNLESS OTHERWISE SHOWN

REVISIONS	
NAME	DATE
R. SHAH	10/25/94
R. SHAH	01/30/95
R. SHAH	03/10/95
A. ABBAS	03/21/97
R. WIEDEMAN	05/14/04
R. BORO	01/01/07

ILLINOIS DEPARTMENT OF TRANSPORTATION
**DETAILS FOR
FRAMES AND LIDS ADJUSTMENT
WITH MILLING**

SCALE: VERT. NONE
HORIZ.

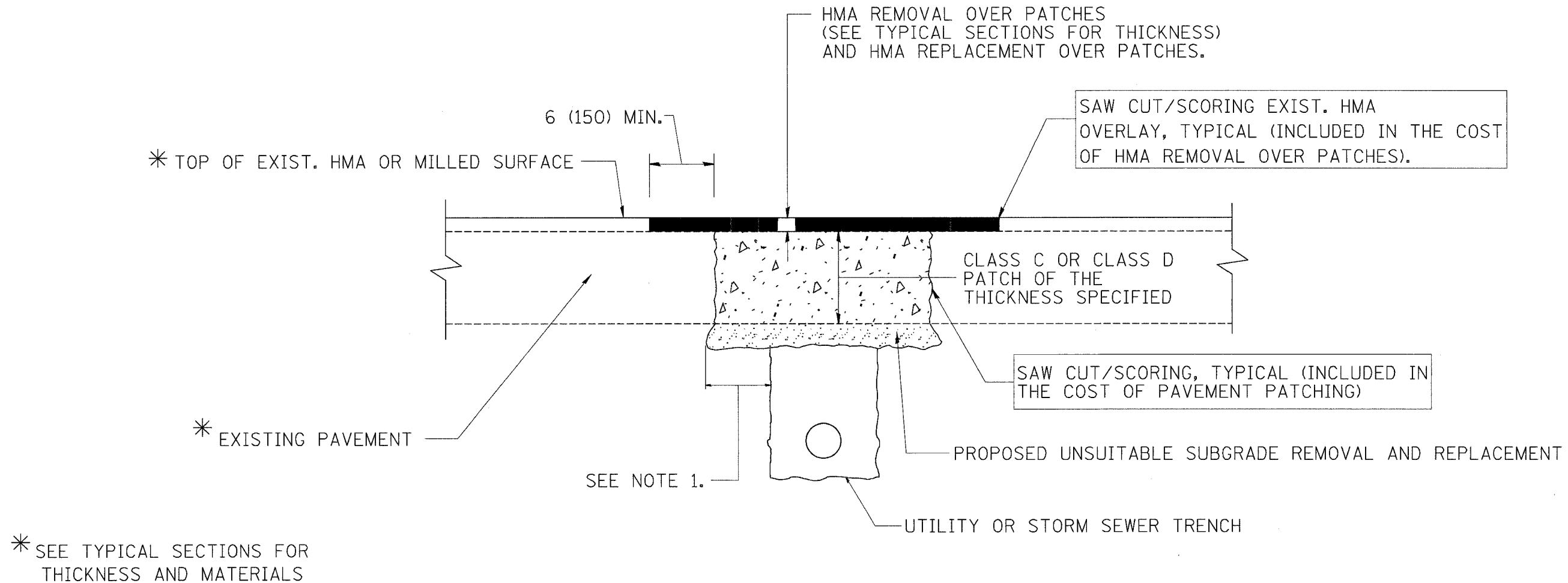
DRAWN BY

CHECKED BY

BD600-03 (BD-8)

F.A. RTE.	SECTION	COUNTY	TOTAL SHEETS	SHEET NO.
353	*	HILL	17	11
STA.		TO STA.		
FED. ROAD DIST. NO. 1 ILLINOIS FED. AID PROJECT				

* (12 & 13) RS-12



NOTES:

1. THE WIDTH OF THE FULL DEPTH PATCH OVER A TRENCH SHALL BE 12 (300) WIDER ON EACH SIDE OF THE TRENCH.
2. FOR METHOD OF MEASUREMENT AND BASIS OF PAYMENT, SEE RECURRING SPECIAL PROVISION "PATCHING WITH HOT-MIX ASPHALT OVERLAY REMOVAL".

SEQUENCE OF CONSTRUCTION

1. REMOVE THE EXISTING HMA MATERIAL OVER THE AREA TO BE PATCHED.
2. REMOVE AND REPLACE FULL DEPTH PATCHES
3. REPLACE HMA MATERIAL OVER THE AREA TO BE PATCHED.

ALL DIMENSIONS ARE IN INCHES (MILLIMETERS) UNLESS OTHERWISE SHOWN.

REVISIONS	
NAME	DATE
R. SHAH	10/25/94
R. SHAH	01/14/95
R. SHAH	03/23/95
R. SHAH	04/24/95
A. HOUSEH	03/15/96
A. ABBAS	03/21/97
A. ABBAS	01/20/98
ART ABBAS	04/27/98
R. BORO	01/01/07

ILLINOIS DEPARTMENT OF TRANSPORTATION

PAVEMENT PATCHING FOR HMA SURFACED PAVEMENT

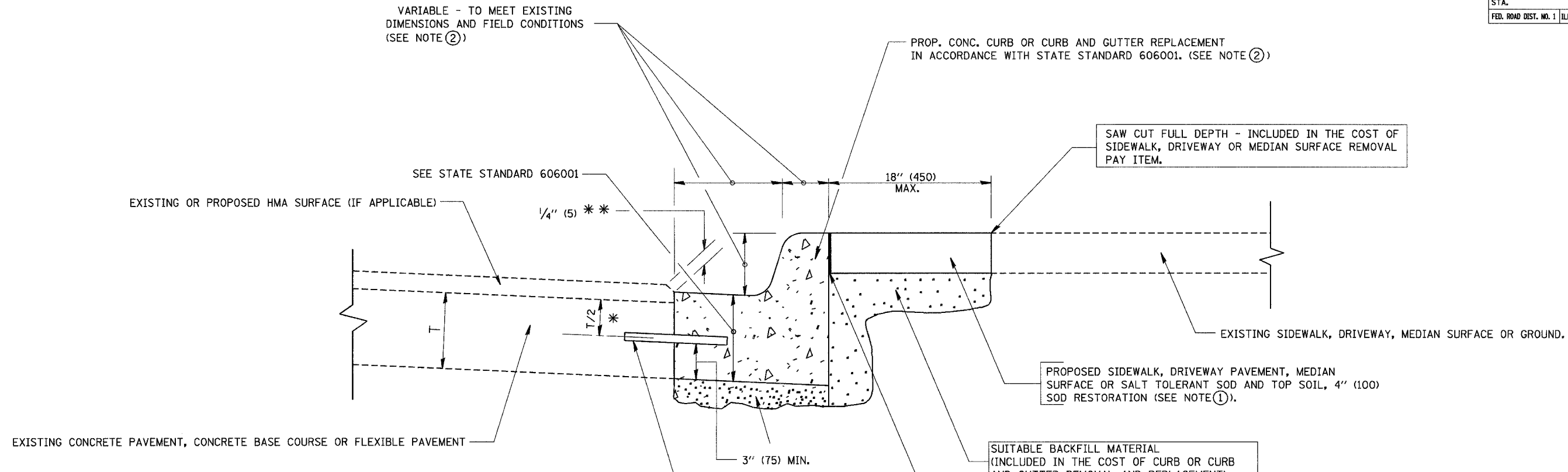
SCALE: VERT. NONE
HORIZ.

DRAWN BY

CHECKED BY

BD400-04 (BD-22)

F.A.P. RTE.	SECTION	COUNTY	TOTAL SHEETS	SHEET NO.
353	(12 & 13) B-12	WILL	17	11A
STA.		TO STA.		
FED. ROAD DIST. NO. 1		ILLINOIS FED. AID PROJECT		



- * 3" (75) MINIMUM FROM TOP AND BOTTOM OF THE CONCRETE PAVEMENT OR BASE COURSE.
- ** IF THE FINAL SURFACE OF THE PAVEMENT IS CONCRETE, THE GUTTER IS TO BE FLUSH WITH THE PAVEMENT.

- NOTE: ① SIDEWALK, DRIVEWAY PAVEMENT OR MEDIAN SURFACE SHALL BE SIMILAR TO THE MATERIAL BEING REMOVED AND WILL BE PAID FOR SEPARATELY.
- SALT TOLERANT SOD AND TOP SOIL, 4" (100) RESTORATION WILL NOT BE PAID FOR SEPARATELY, BUT SHALL BE INCLUDED IN THE COST OF CURB OR CURB AND GUTTER REMOVAL AND REPLACEMENT.
- ② CURB OR CURB AND GUTTER REPLACEMENT SHALL MATCH THE SHAPE OF THE EXISTING CURB OR CURB AND GUTTER UNLESS OTHERWISE SPECIFIED.
 - ③ FOR CURB OR CURB AND GUTTER REMOVAL AND REPLACEMENT ADJACENT TO FLEXIBLE PAVEMENT DELETE EPOXY COATED TIE BARS.
 - ④ LONGITUDINAL BARS, IF ENCOUNTERED IN THE EXISTING CURB OR CURB AND GUTTER, ARE NOT TO BE REPLACED. CUTTING AND REMOVING LONGITUDINAL BARS SHALL BE INCLUDED IN THE COST OF CURB OR CURB AND GUTTER REMOVAL AND REPLACEMENT.
 - ⑤ THE COST OF HMA SURFACE REMOVAL IN THE EXISTING GUTTER FLAG SHALL BE INCLUDED IN THE COST OF THE CURB AND GUTTER REMOVAL AND REPLACEMENT.
 - ⑥ THE REMOVAL AND REPLACEMENT OF THE EXISTING CURB OR CURB AND GUTTER SHALL BE DONE IN ACCORDANCE WITH THE APPLICABLE PORTIONS OF SECTION 440 AND 606 OF THE STANDARD SPECIFICATIONS.
 - ⑦ THE LOCATIONS OF REMOVAL AND REPLACEMENT OF EXISTING CURB OR CURB AND GUTTER SHALL BE DETERMINED BY THE RESIDENT ENGINEER AT THE TIME OF CONSTRUCTION.

BASIS OF PAYMENT:
 THIS WORK WILL BE PAID FOR AT THE CONTRACT UNIT PRICE PER FOOT (METER) FOR "CURB REMOVAL AND REPLACEMENT" OR "COMBINATION CONCRETE CURB AND GUTTER REMOVAL AND REPLACEMENT".

ALL DIMENSIONS ARE IN INCHES (MILLIMETERS) UNLESS OTHERWISE SHOWN.

CURB OR CURB AND GUTTER REMOVAL AND REPLACEMENT

REVISIONS	
NAME	DATE
A. HOUSEH	03/11/94
R. SHAH	02/24/95
R. SHAH	03/02/95
R. SHAH	08/19/96
R. SHAH	09/12/96
R. SHAH	09/19/96
R. SHAH	10/03/96
A. ABBAS	03/21/97
M. GOMEZ	01/22/01
R. BORO	01/01/07

ILLINOIS DEPARTMENT OF TRANSPORTATION

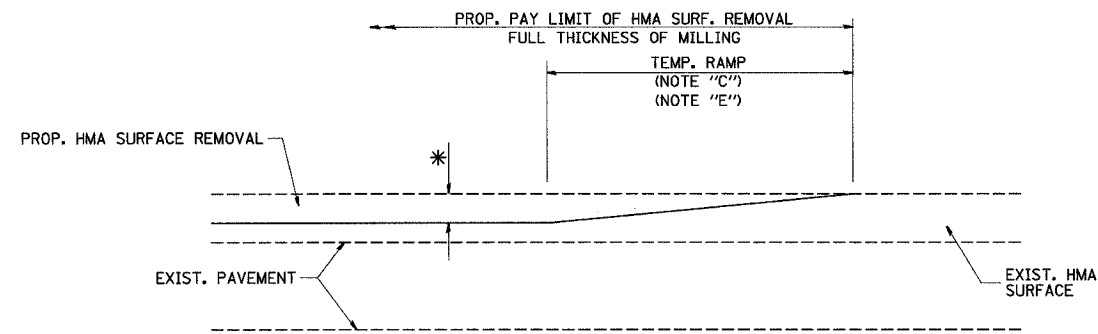
CURB OR CURB AND GUTTER REMOVAL AND REPLACEMENT

SCALE: VERT. NONE
 HORIZ. NONE

DRAWN BY
 CHECKED BY
 BD600-06 (BD-24)

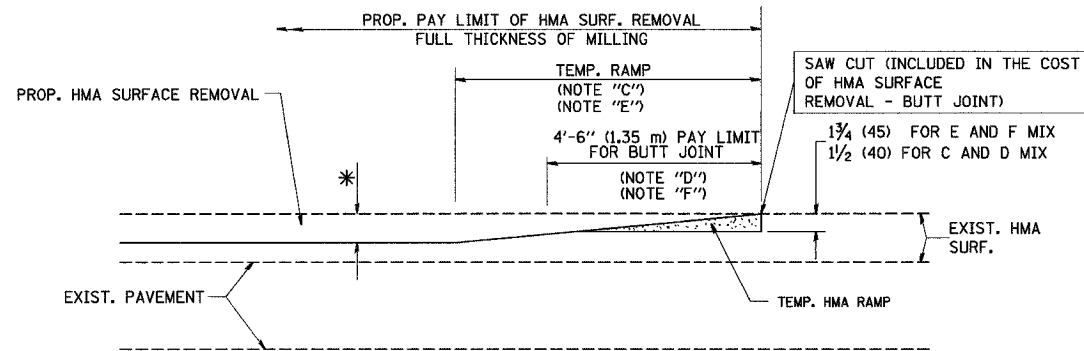
PLOT DATE = 3/5/2007
 FILE NAME = K:\Users\luc24\p\dgn
 USER NAME = luc24

F.A.P. RTE.	SECTION	COUNTY	TOTAL SHEETS	SHEET NO.
353	*	WILL	17	12
STA.		TO STA.		
FED. ROAD DIST. NO. 1		ILLINOIS	FED. AID PROJECT	
* (12 & 13) R5-12				



MILLED TEMPORARY RAMP
(FOR BUTT JOINT AND HMA TAPER SEE DETAIL BELOW)

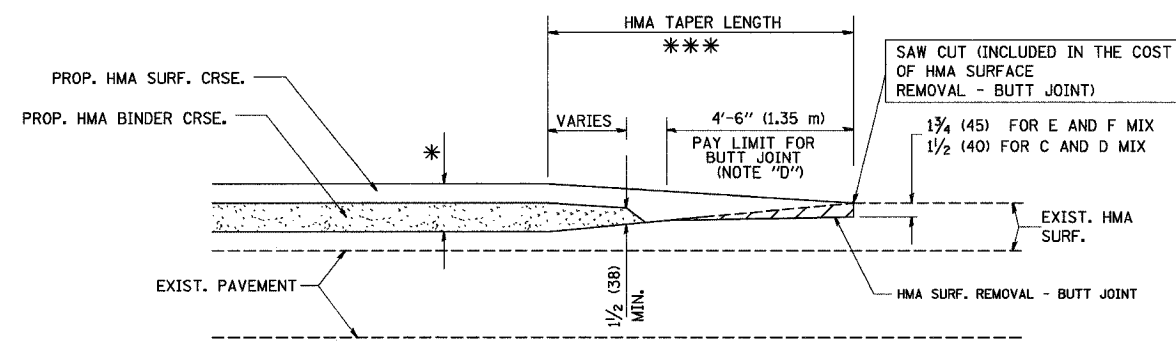
OPTION 1



HMA CONSTRUCTED TEMPORARY RAMP
(FOR BUTT JOINT AND HMA TAPER SEE DETAIL BELOW)

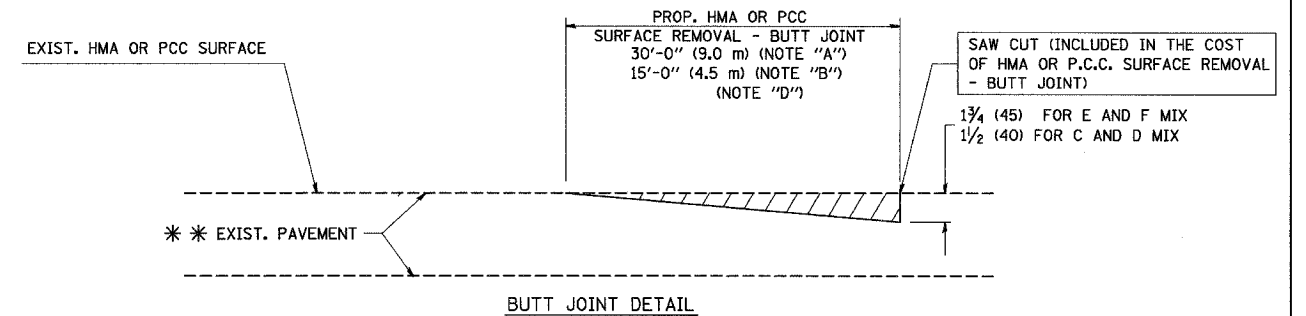
OPTION 2

TYPICAL TEMPORARY RAMP

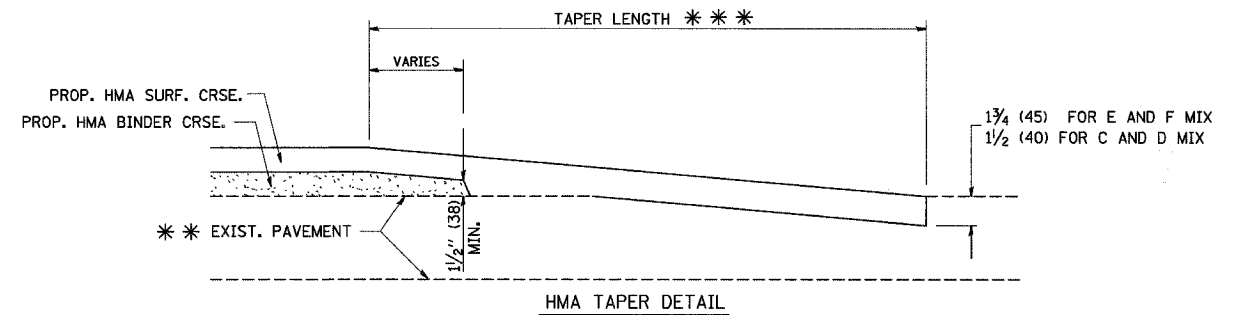


BUTT JOINT AND
HMA TAPER

**TYPICAL BUTT JOINT AND HMA TAPER
FOR MILLING AND RESURFACING**



BUTT JOINT DETAIL



HMA TAPER DETAIL

**TYPICAL BUTT JOINT AND HMA TAPER
FOR RESURFACING ONLY**

*** PC CONCRETE, HMA OR HMA RESURFACED PAVEMENT.

NOTES

- A: MAINLINE ROADWAYS AND MAJOR SIDE ROADS.
 - B: MINOR SIDE ROADS.
 - C: THE TEMP. RAMP SHALL BE CONSTRUCTED IMMEDIATELY UPON REMOVAL OF THE EXISTING HMA SURFACE.
 - D: THE BUTT JOINT SHALL BE CONSTRUCTED IMMEDIATELY PRIOR TO PLACING THE PROPOSED HMA COURSES.
 - E: TAPER THE TEMP. RAMP AT A RATE OF 3'-0" (900 mm) PER 1 INCH (25 mm) OF MILLING THICKNESS.
 - F: INSTALLATION AND REMOVAL OF THE 4'-6" (1.35 m) TEMP. RAMP IS INCLUDED IN COST OF HMA SURFACE REMOVAL - BUTT JOINT
 - G: SEE ARTICLE 406.08 AND 406.14 OF THE STANDARD SPECIFICATIONS FOR "HMA AND/OR PCC SURFACE REMOVAL, BUTT JOINT".
- * SEE TYPICAL SECTIONS FOR MILLING THICKNESS.
- *** 20'-0" (6.1 m) PER 1 (25) RESURFACING (NOTE "A")
10'-0" (3.0 m) PER 1 (25) RESURFACING (NOTE "B")

ALL DIMENSIONS ARE IN INCHES (MILLIMETERS) UNLESS OTHERWISE SHOWN.

BASIS OF PAYMENT:

THE BUTT JOINT WILL BE PAID FOR AT THE CONTRACT UNIT PRICE PER SQUARE YARD (SQUARE METER) FOR "HOT-MIX ASPHALT SURFACE REMOVAL - BUTT JOINT" OR FOR "PORTLAND CEMENT CONCRETE SURFACE REMOVAL - BUTT JOINT".

REVISIONS	
NAME	DATE
M. DE YONG	6-13-90
M. DE YONG	7-3-90
M. DE YONG	3-27-92
R. SHAH	09/09/94
R. SHAH	10/25/94
A. ABBAS	03/21/97
M. GOMEZ	04/06/01
R. BORO	01/01/07

ILLINOIS DEPARTMENT OF TRANSPORTATION

**BUTT JOINT AND
HMA TAPER
DETAILS**

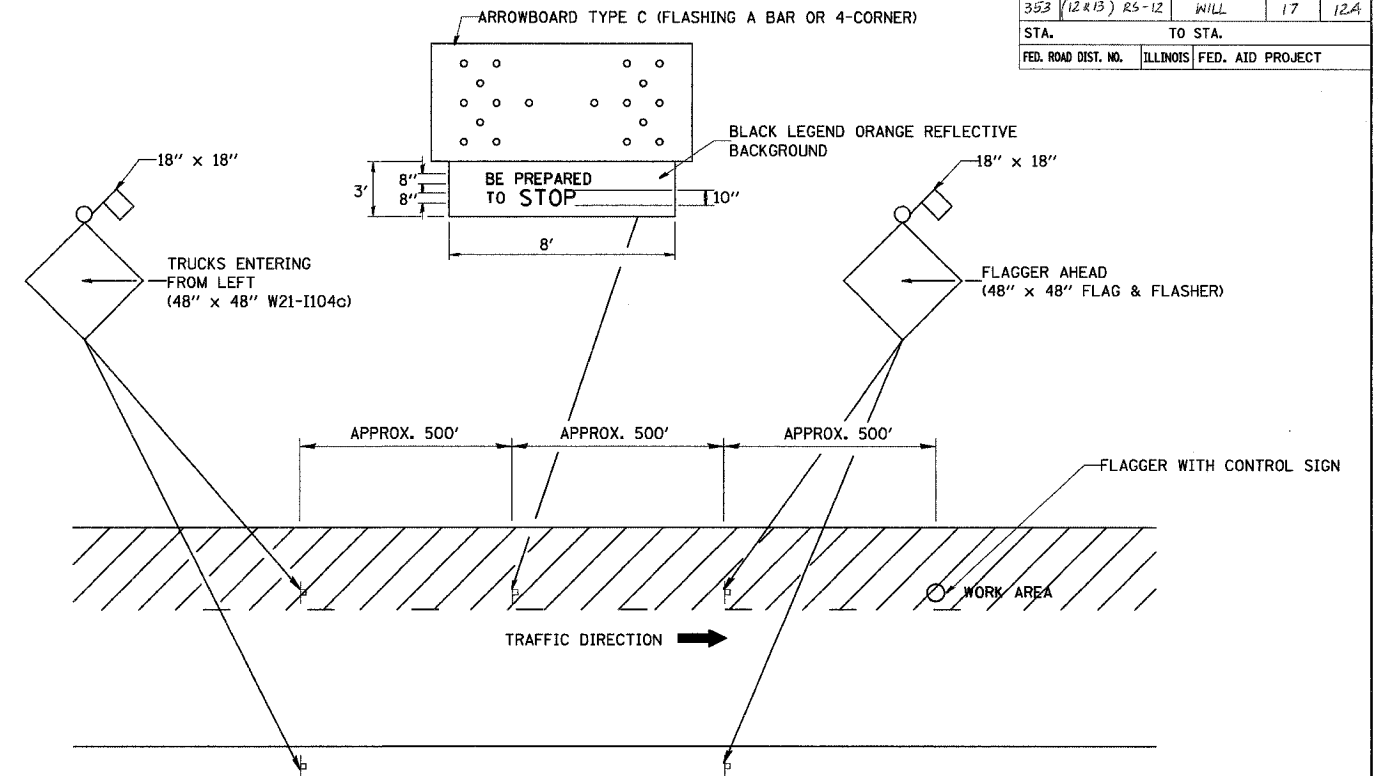
SCALE: VERT. NONE
HORIZ.

DRAWN BY

CHECKED BY

BD400-05 (VI-BD32)

F.A.P. RTE.	SECTION	COUNTY	TOTAL SHEETS	SHEET NO.
353	(12R13) 25-12	WILL	17	12A
STA.		TO STA.		
FED. ROAD DIST. NO.	ILLINOIS	FED. AID PROJECT		



METHOD OF FLAGGING

NOTES:

1. SIGNS SHALL BE MOUNTED AT A MINIMUM CLEARANCE HEIGHT OF 5 FEET
2. ALL SIGNS SHALL BE REMOVED WHEN THE FLAGGING OPERATION CEASES.
3. THIS CASE ALSO APPLIES WHEN THE WORK ZONE IS ON THE RIGHT. UNDER THESE CONDITIONS "TRUCKS ENTERING FROM RIGHT" SIGNS SHALL BE SUBSTITUTED FOR "TRUCKS ENTERING FROM LEFT" SIGNS. ALSO THE ARROWBOARD AND "BE PREPARED TO STOP" SIGNS SHALL BE RELOCATED TO THE RIGHT SIDE OF THE ROAD.
4. WORK ZONE ACCESS POINTS SHOULD BE A MINIMUM OF ONE HALF MILE APART. MEDIAN WORK ZONE ACCESS POINTS SHOULD NOT BE LOCATED OPPOSITE OF EACH OTHER.
5. NIGHTTIME FLAGGING OPERATIONS: THE FLAG STATION SHALL BE LIGHTED WITH ADDITIONAL LIGHTS OTHER THAN STREET LIGHTS. THE FLAGGER CONTROL SIGN AND THE FLAGGER'S VEST SHALL BE REFLECTORIZED. IN ADDITION, THE FLAGGER SHALL HAVE A FLASHLIGHT OR LIGHTED WAND.

REVISIONS	
NAME	DATE
RAY RITCHIE	5/10/00

ILLINOIS DEPARTMENT OF TRANSPORTATION

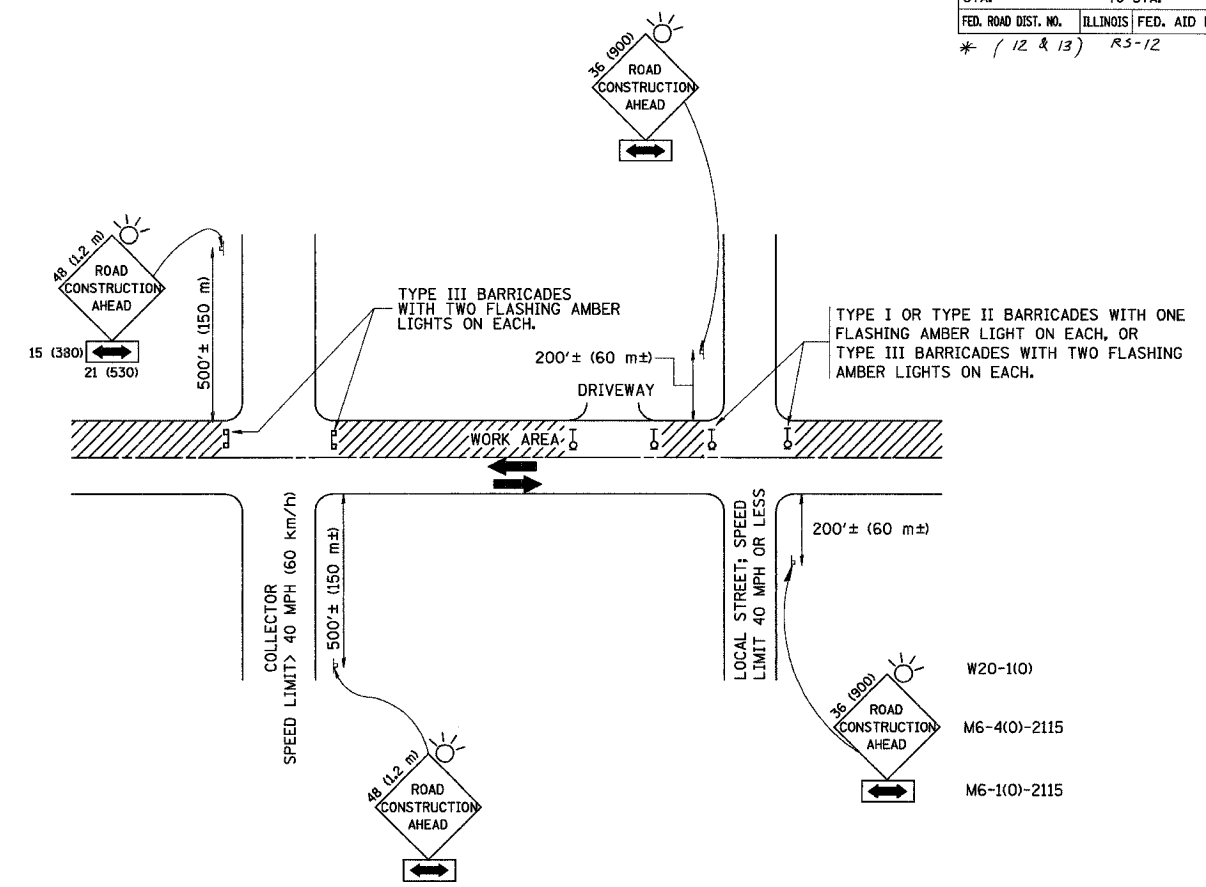
METHOD OF FLAGGING

SCALE: NOT TO SCALE

DRAWN BY C.A.D.
CHECKED BY
BM-14

PLOT DATE = 3/6/2007
PLOT SCALE = 1/8" = 1'-0"
USER NAME = bauer-d

F.A.P. RTE.	SECTION	COUNTY	TOTAL SHEETS	SHEET NO.
353	*	WILL	17	13
STA.		TO STA.		
FED. ROAD DIST. NO.		ILLINOIS FED. AID PROJECT		
* (12 & 13)		R5-12		



TRAFFIC CONTROL AND PROTECTION FOR SIDE ROADS, INTERSECTIONS, AND DRIVEWAYS

NOTES:

- A. FOR NO LANE RESTRICTION ON THE SIDE ROAD OR DRIVEWAYS
- SIDE ROAD WITH A SPEED LIMIT OF 40 MPH (60 km/h) OR LESS AS SHOWN ON THE DRAWING AND AS DIRECTED BY THE ENGINEER:
 - a) ONE ROAD CONSTRUCTION AHEAD SIGN 36 x 36 (900x900) WITH A FLASHER AND FLAG MOUNTED ON IT APPROXIMATELY 200' (60 m) IN ADVANCE OF THE MAIN ROUTE.
 - b) THE CLOSED PORTION OF THE MAIN ROUTE SHALL BE PROTECTED BY BLOCKING WITH TYPE I, TYPE II OR TYPE III BARRICADES, 1/3 OF THE CROSS SECTION OF THE CLOSED PORTION.
 - SIDE ROAD WITH A SPEED LIMIT GREATER THAN 40 MPH (60 km/h) AS SHOWN ON THE DRAWING AND AS DIRECTED BY THE ENGINEER:
 - a) ONE ROAD CONSTRUCTION AHEAD SIGN 48 x 48 (1.2 m x 1.2 m) WITH A FLASHER MOUNTED ON IT APPROXIMATELY 500' (150 m) IN ADVANCE OF THE MAIN ROUTE.
 - b) THE CLOSED PORTION OF THE MAIN ROUTE SHALL BE PROTECTED BY BLOCKING WITH TYPE III BARRICADES, 1/2 OF THE CROSS SECTION OF THE CLOSED PORTION.
 - WHEN THE SIDE ROAD LIES BETWEEN THE BEGINNING OF THE MAINLINE SIGNING AND THE WORK ZONE, A SINGLE HEADED ARROW (M6-1) SHALL BE USED IN LIEU OF THE DOUBLE HEADED ARROW (M6-4).
- B. FOR A LANE CLOSURE ON A SIDE ROAD OR DRIVEWAY:
- USE APPLICABLE PORTIONS OF THE TYPICAL APPLICATION OF TRAFFIC CONTROL DEVICES (STD. 701501, STD. 701606 OR THE APPROPRIATE STANDARD). THE SPACING OF SIGNS AND BARRICADES SHALL BE ADJUSTED FOR FIELD CONDITIONS AS DIRECTED BY THE ENGINEER. THE DIRECTIONAL ARROW SHALL BE COVERED OR REMOVED WHEN NO LONGER CONSISTENT WITH THE SIDE ROAD LANE CLOSURE.
- C. ADVANCE WARNING SIGNS ARE TO BE OMITTED ON DRIVEWAY UNLESS OTHERWISE NOTED.
- D. THE TRAFFIC CONTROL AND PROTECTION FOR SIDE ROADS, INTERSECTIONS, AND DRIVEWAYS SHALL BE INCIDENTAL TO THE COST OF SPECIFIED TRAFFIC CONTROL STANDARDS OR ITEMS.

All dimensions are in millimeters (inches) unless otherwise shown.

REVISIONS	
NAME	DATE
LHA	6/89
T. RAMMACHER	09/08/94
J. OBERLE	10/18/95
A. HOUSEH	03/06/96
A. HOUSEH	10/15/96
T. RAMMACHER	01/06/00

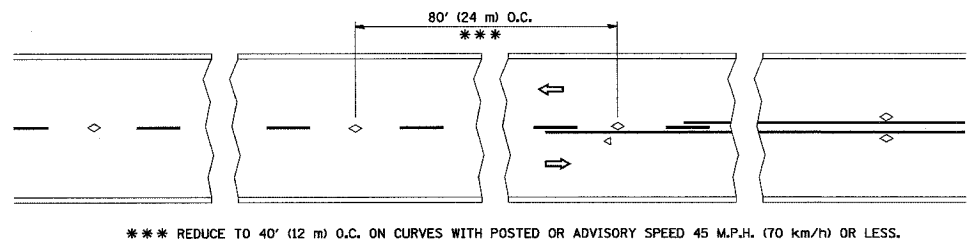
ILLINOIS DEPARTMENT OF TRANSPORTATION
 TRAFFIC CONTROL AND PROTECTION
 FOR
 SIDE ROADS, INTERSECTIONS, AND
 DRIVEWAYS

SCALE: NONE

DRAWN BY
 CHECKED BY
 TC-10

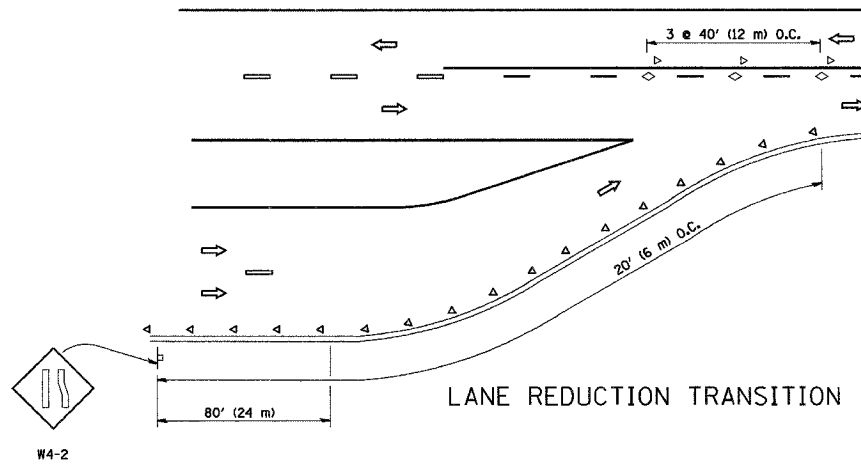
PLOT DATE = 3/6/2007
 FILE NAME = M:\vstas\va08.dgn
 PLOT SCALE = 80.000 / IN.
 USER NAME = bhamard

F.A.P. RTE.	SECTION	COUNTY	TOTAL SHEETS	SHEET NO.
353	*		17	14
STA.		TO STA.		
FED. ROAD DIST. NO.		ILLINOIS FED. AID PROJECT		
* (12 & 13) RS-12				

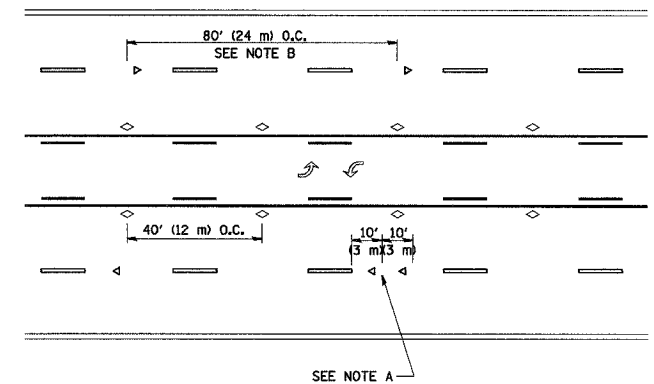


TWO-LANE/TWO-WAY

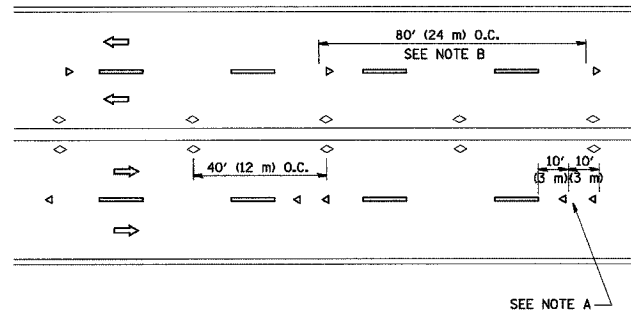
*** REDUCE TO 40' (12 m) O.C. ON CURVES WITH POSTED OR ADVISORY SPEED 45 M.P.H. (70 km/h) OR LESS.



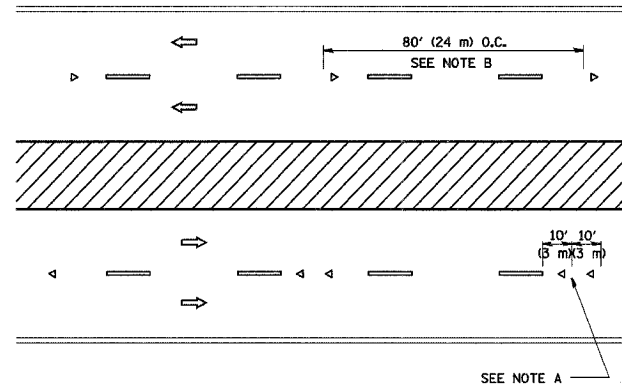
LANE REDUCTION TRANSITION



TWO-WAY LEFT TURN



MULTI-LANE/UNDIVIDED



MULTI-LANE/DIVIDED

GENERAL NOTES

1. MARKERS USED WITH DASHED LINES SHALL BE CENTERED IN THE GAP BETWEEN SEGMENTS.
2. MARKERS USED ADJACENT TO SOLID LINES SHALL BE OFFSET 2 TO 3 (50 TO 75) TOWARD TRAFFIC AS SHOWN.
3. MARKERS THROUGH TANGENTS LESS THAN 500' (150 m) IN LENGTH BETWEEN CURVES SHALL BE INSTALLED AT THE LESSER OF THE TWO CURVE SPACINGS.

SYMBOLS

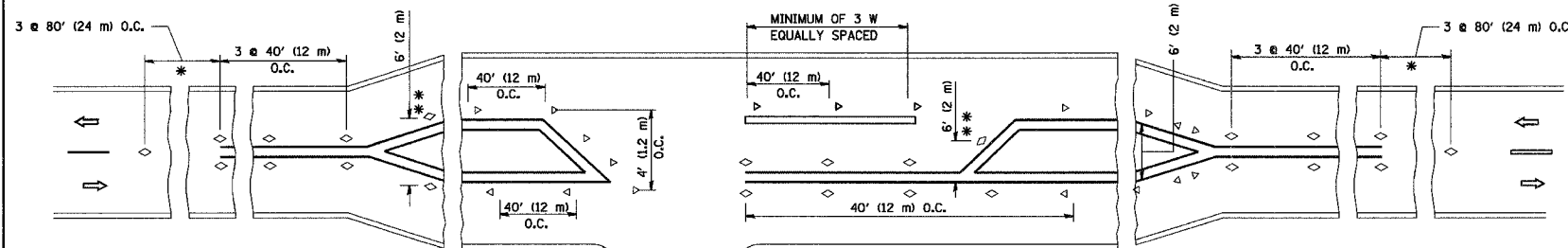
- YELLOW STRIPE
- WHITE STRIPE
- ◁ ONE-WAY AMBER MARKER
- ◁ ONE-WAY CRYSTAL MARKER (W/O)
- ◇ TWO-WAY AMBER MARKER

LANE MARKER NOTES

- A. USE DOUBLE LANE LINE MARKERS SPACED AS SHOWN.
- B. REDUCE TO 40' (12 m) O.C. ON CURVES WHERE ADVISORY SPEEDS ARE 10 M.P.H. (20 km/h) LOWER THAN POSTED SPEEDS.

DESIGN NOTES

1. DOUBLE LANE LINE MARKERS SHALL BE USED UNLESS SPECIFIED OTHERWISE.
2. EXCEPT AS SHOWN ON THE LANE REDUCTION TRANSITION AND FREEWAY EXIT RAMP DETAIL, MARKERS ARE NOT TO BE SPECIFIED ON RIGHT EDGE LINES.
3. THE EXACT MARKER LIMITS, SPACING, AND COLOR SHOULD BE INCLUDED IN THE PLANS.
4. MARKERS SHOULD NOT BE USED ALONGSIDE CURBS EXCEPT FOR EXTREMELY SHORT SECTIONS OF CURBS WHERE NOT MORE THAN TWO MARKERS WOULD BE INVOLVED.



LEFT TURN

* SEE TWO-LANE/TWO-WAY WHERE MARKERS CONTINUE
 ** WHERE THE MEDIAN WIDTH IS 6' (2 m) OR LESS USE TWO-WAY MARKERS.

All dimensions are in inches (millimeters) unless otherwise shown.

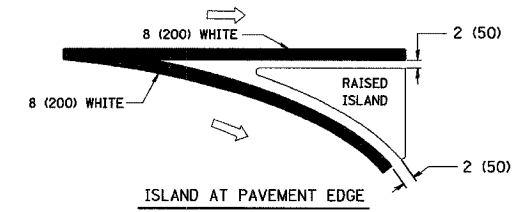
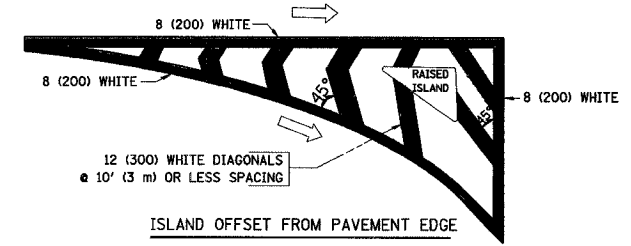
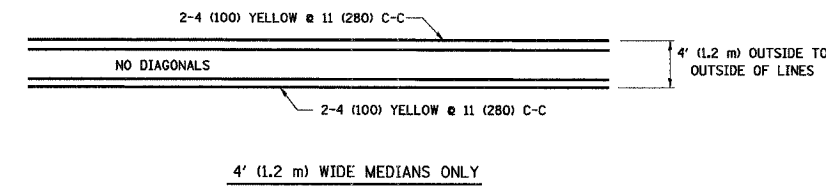
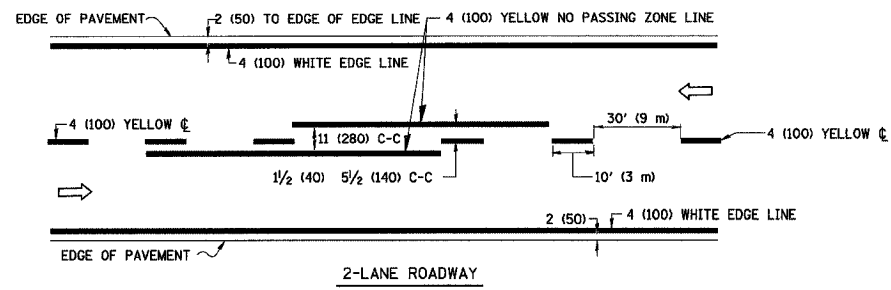
REVISIONS	
NAME	DATE
T. RAMMACHER	09-19-94
T. RAMMACHER	03-12-99
T. RAMMACHER	01-06-00

ILLINOIS DEPARTMENT OF TRANSPORTATION
 TYPICAL APPLICATIONS
 RAISED REFLECTIVE PAVEMENT
 MARKERS (SNOW-PLOW RESISTANT)

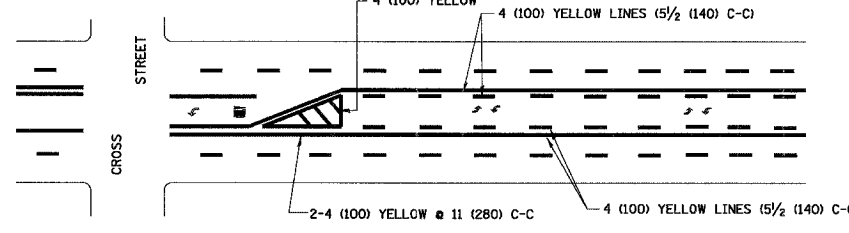
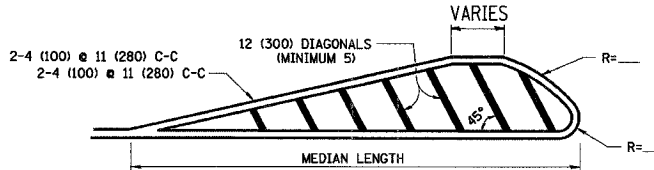
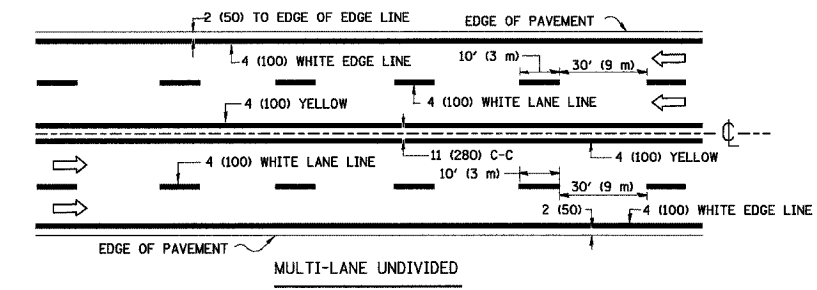
SCALE: NONE

DRAWN BY CADD
 CHECKED BY

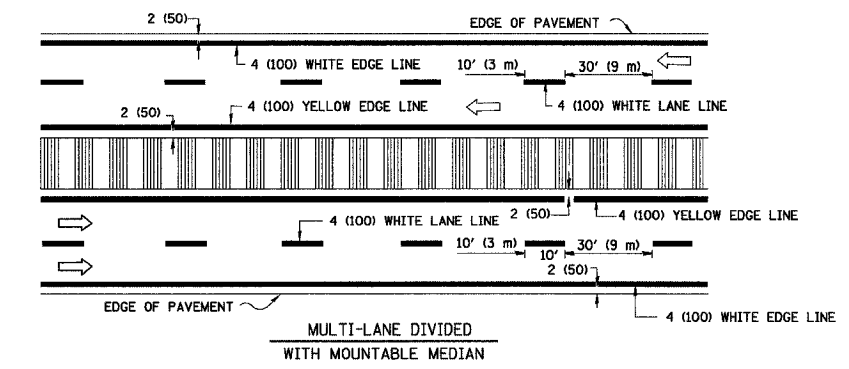
F.A.P. RTE. NO.	SECTION	COUNTY	TOTAL SHEETS	SHEET NO.
353	*	WILL	17	15
STA. TO STA.		FED. ROAD DIST. NO. ILLINOIS FED. AID PROJECT		
* (12 & 13) R.S. 12				



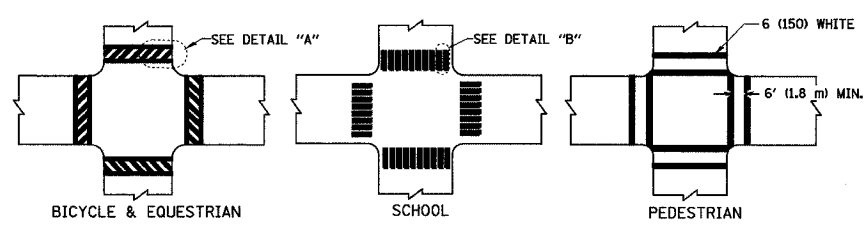
TYPICAL ISLAND MARKING



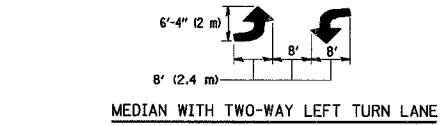
TYPICAL PAINTED MEDIAN MARKING



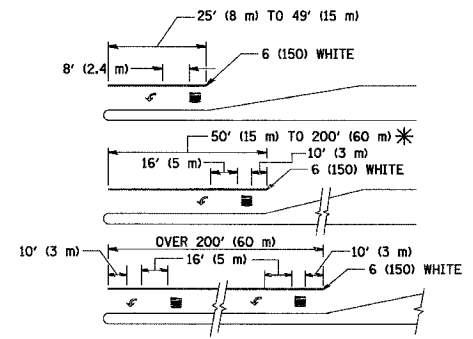
TYPICAL LANE AND EDGE LINE MARKING



TYPICAL CROSSWALK MARKING



TYPICAL LEFT (OR RIGHT) TURN LANE



TYPICAL TURN LANE MARKING

TYPE OF MARKING	WIDTH OF LINE	PATTERN	COLOR	SPACING / REMARKS
CENTERLINE ON 2 LANE PAVEMENT	4 (100)	SKIP-DASH	YELLOW	10' (3 m) LINE WITH 30' (9 m) SPACE
CENTERLINE ON MULTI-LANE UNDIVIDED PAVEMENT	2 @ 4 (100)	SOLID	YELLOW	11 (280) C-C
NO PASSING ZONE LINES: FOR ONE DIRECTION FOR BOTH DIRECTIONS	4 (100) 2 @ 4 (100)	SOLID SOLID	YELLOW YELLOW	5/2 (140) C-C FROM SKIP-DASH CENTERLINE 11 (280) C-C OMIT SKIP-DASH CENTERLINE BETWEEN
LANE LINES	4 (100) 5 (125) ON FREEWAYS	SKIP-DASH SKIP-DASH	WHITE WHITE	10' (3 m) LINE WITH 30' (9 m) SPACE
DOTTED LINES (EXTENSIONS OF CENTER, LANE OR TURN LANE MARKINGS)	SAME AS LINE BEING EXTENDED	SKIP-DASH	SAME AS LINE BEING EXTENDED	2' (600) LINE WITH 6' (1.8 m) SPACE
EDGE LINES	4 (100)	SOLID	YELLOW-LEFT WHITE-RIGHT	OUTLINE MOUNTABLE MEDIANS IN YELLOW; EDGE LINES ARE NOT USED NEXT TO BARRIER CURB
TURN LANE MARKINGS	6 (150) LINE; FULL SIZE LETTERS & SYMBOLS (8' (2.4m))	SOLID	WHITE	SEE TYPICAL TURN LANE MARKING DETAIL
TWO WAY LEFT TURN MARKING	2 @ 4 (100) EACH DIRECTION 8' (2.4m) LEFT ARROW	SKIP-DASH AND SOLID IN PAIRS	YELLOW WHITE	10' (3 m) LINE WITH 30' (9 m) SPACE FOR SKIP-DASH; 5/2 (140) C-C BETWEEN SOLID LINE AND SKIP-DASH LINE SEE TYPICAL TWO-WAY LEFT TURN MARKING DETAIL
CROSSWALK LINES (PEDESTRIAN) A. DIAGONALS (BIKE & EQUESTRIAN) B. LONGITUDINAL BARS (SCHOOL)	2 @ 6 (150) 12 (300) @ 45° 12 (300) @ 90°	SOLID SOLID SOLID	WHITE WHITE WHITE	NOT LESS THAN 6' (1.8 m) APART 2' (600) APART SEE TYPICAL CROSSWALK MARKING DETAILS.
STOP LINES	24 (600)	SOLID	WHITE	PLACE 4' (1.2 m) IN ADVANCE OF AND PARALLEL TO CROSSWALK, IF PRESENT. OTHERWISE, PLACE AT DESIRED STOPPING POINT, PARALLEL TO CROSSROAD CENTERLINE, WHERE POSSIBLE
PAINTED MEDIANS	2 @ 4 (100) WITH 12 (300) DIAGONALS @ 45° NO DIAGONALS USED FOR 4' (1.2 m) WIDE MEDIANS	SOLID	YELLOW; TWO WAY TRAFFIC WHITE; ONE WAY TRAFFIC	11 (280) C-C FOR THE DOUBLE LINE SEE TYPICAL PAINTED MEDIAN MARKING.
GORE MARKING AND CHANNELIZING LINES	8 (200) WITH 12 (300) DIAGONALS @ 45°	SOLID	WHITE	DIAGONALS: 15' (4.5 m) C-C (LESS THAN 30MPH (50 km/h)) 20' (6 m) C-C 30MPH (50 km/h) TO 45MPH (70 km/h) 30' (9 m) C-C (OVER 45MPH (70 km/h))
RAILROAD CROSSING	24 (600) TRANSVERSE LINES; "RR" IS 6' (1.8 m) LETTERS; 16 (400) LINE FOR "X"	SOLID	WHITE	SEE STATE STANDARD 780001 AREA OF: "R"=3.6 SQ. FT. (0.33 m ²) EACH "X"=54.0 SQ. FT. (5.0 m ²)
SHOULDER DIAGONALS	12 (300) @ 45°	SOLID	WHITE - RIGHT YELLOW - LEFT	50' (15 m) C-C (LESS THAN 30MPH (50 km/h)) 75' (25 m) C-C (30 MPH (50 km/h) TO 45MPH (70 km/h)) 150' (45 m) C-C (OVER 45MPH (70 km/h))

FOR FURTHER DETAILS ON PAVEMENT MARKING REFER TO STANDARD SPECIFICATIONS FOR ROAD AND BRIDGE CONSTRUCTION AND STATE STANDARD 780001.

All dimensions are in inches (millimeters) unless otherwise shown.

REVISIONS	
NAME	DATE
EVERS	03-19-90
T. RAMMACHER	10-27-94
ALEX HOUSEH	10-09-96
ALEX HOUSEH	10-17-96
T. RAMMACHER	01-06-00

ILLINOIS DEPARTMENT OF TRANSPORTATION

DISTRICT ONE

TYPICAL PAVEMENT MARKINGS

SCALE: NONE

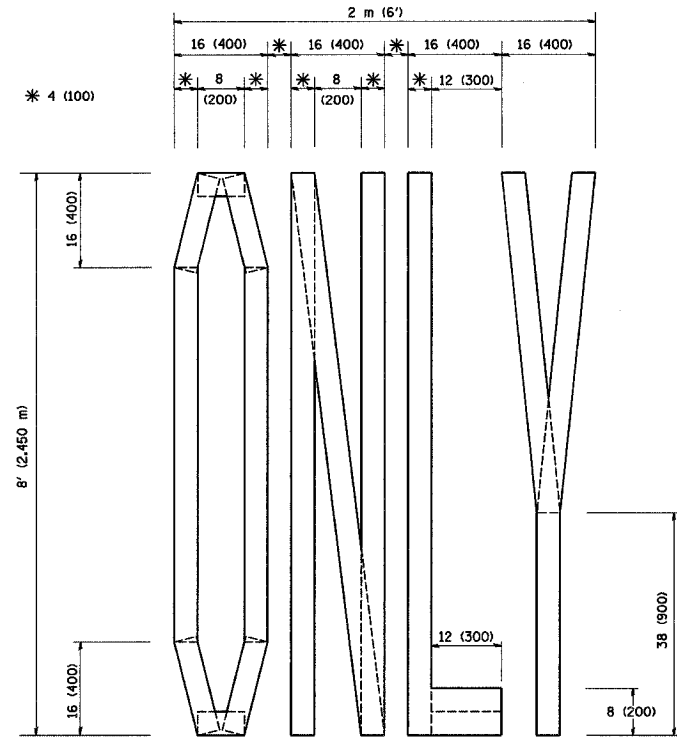
DRAWN BY CADD

CHECKED BY

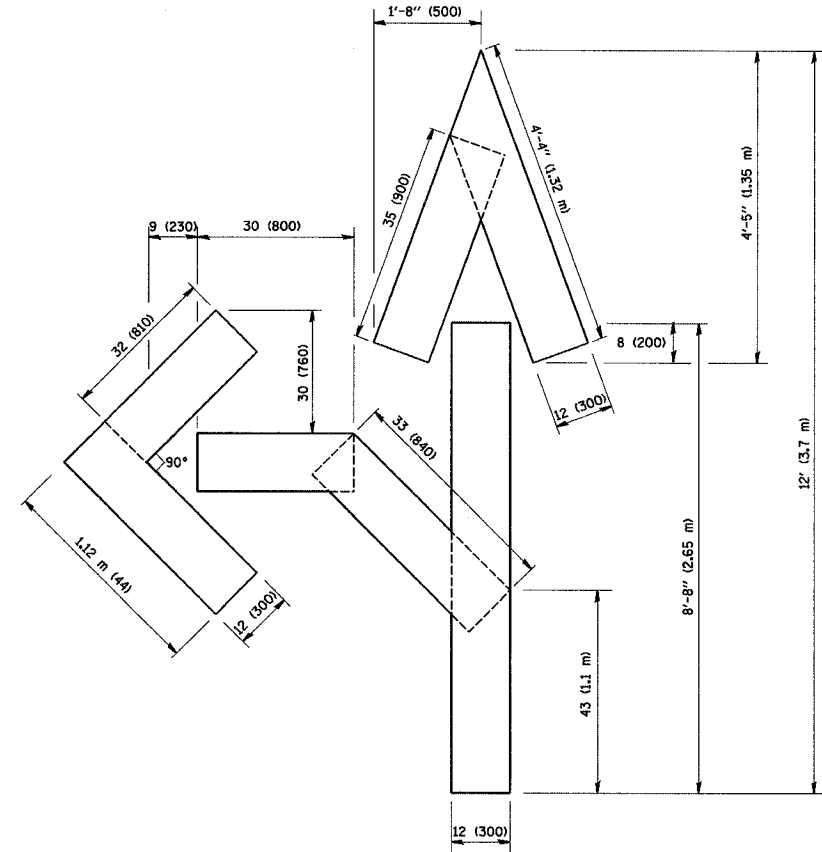
TC-13

PLOT DATE = 3/6/2007
FILE NAME = K:\Users\va0333\dgn
SCALE = 1/8" = 1' IN.
USER NAME = bsharad

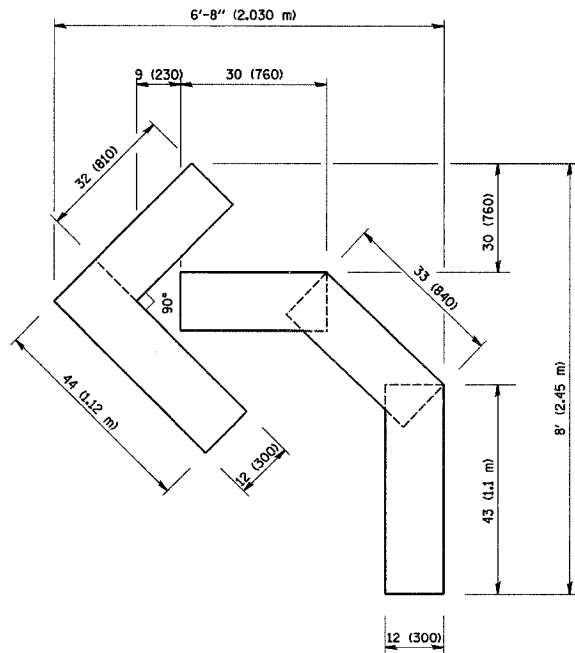
F.A.P. RTE.	SECTION	COUNTY	TOTAL SHEETS	SHEET NO.
353	*	WILL	17	16
STA.		TO STA.		
FED. ROAD DIST. NO.		ILLINOIS FED. AID PROJECT		
* (12 & 13) R5-12				



QUANTITY
 4 (100) LINE = 64.1 ft. (19.7 m)
 21.1 sq. ft. (1.97 sq. m)



QUANTITY
 4 (100) LINE = 82.5 ft. (25.3 m)
 27.5 sq. ft. (2.53 sq. m)



QUANTITY
 4 (100) LINE = 45.5 ft. (13.9 m)
 15.2 sq. ft. (1.39 sq. m)

All dimensions are in inches (millimeters) unless otherwise shown.

REVISIONS	
NAME	DATE
T. RAMMACHER	09/18/94
J. OBERLE	06/01/96
T. RAMMACHER	06/05/96
T. RAMMACHER	11/04/97
T. RAMMACHER	03/02/98
E. GOMEZ	08/28/00

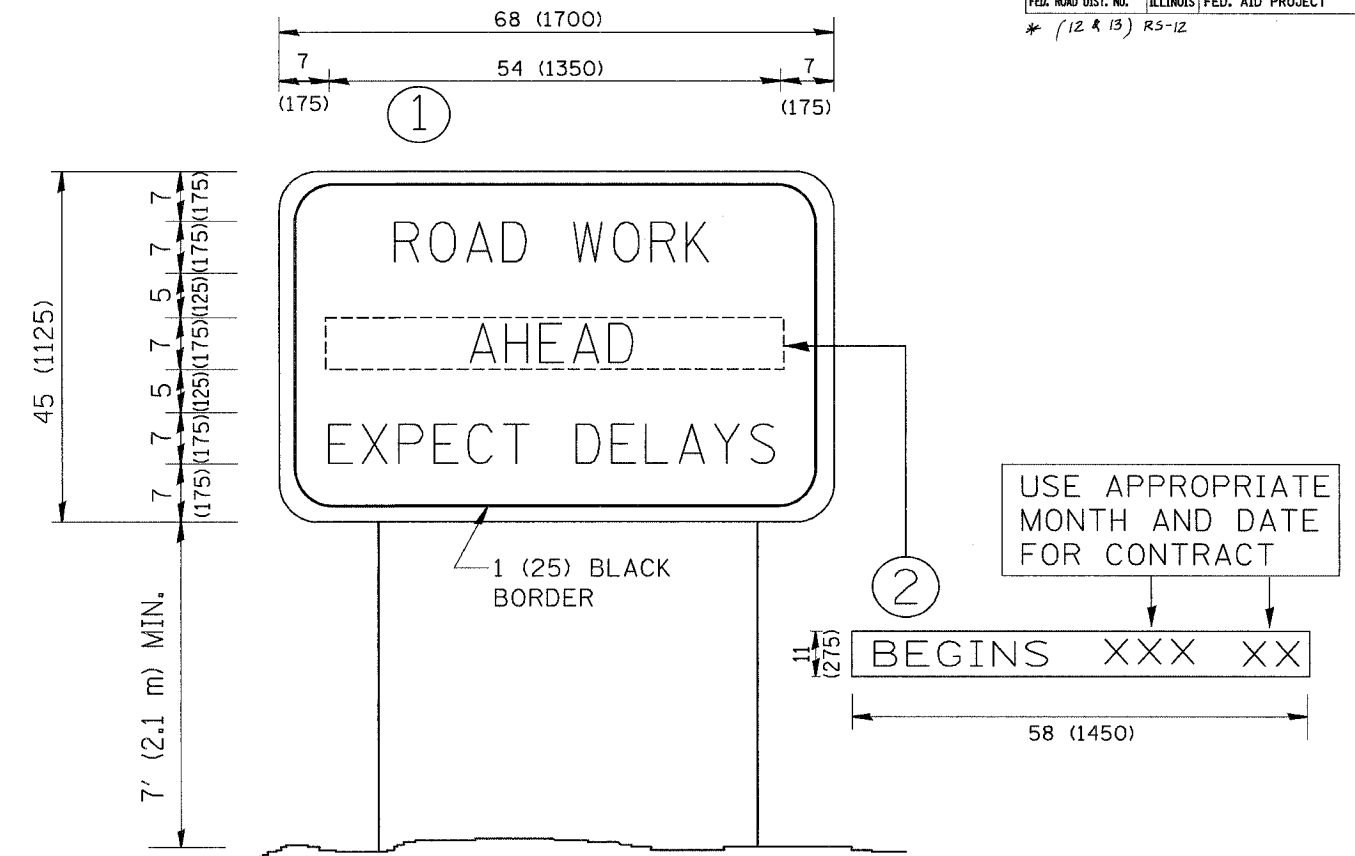
ILLINOIS DEPARTMENT OF TRANSPORTATION

PAVEMENT MARKING
 LETTERS AND SYMBOLS
 FOR TRAFFIC STAGING

SCALE: NONE
 DRAWN BY CADD
 CHECKED BY

PLOT DATE = 3/7/2007
 PLOT SCALE = 84.0000 / IN
 USER NAME = bmaur-dl

CONTRACT NO.				
F.A.P. RTE.	SECTION	COUNTY	TOTAL SHEETS	SHEET NO.
353	*	WILL	17	17
STA.		TO STA.		
FED. ROAD DIST. NO.	ILLINOIS	FED. AID PROJECT		
* (12 & 13) R5-12				



NOTES:

1. USE BLACK LETTERING ON ORANGE BACKGROUND.
2. ERECT SIGNS IN ADVANCE OF THE LOCATION FOR THE "ROAD CONSTRUCTION AHEAD" SIGN AT LOCATIONS AS DIRECTED BY THE ENGINEER.
3. ERECT SIGN ① WITH INSTALLED PANEL ② ONE WEEK PRIOR TO THE START OF CONSTRUCTION.
4. REMOVE PANEL ② SOON AFTER THE START OF CONSTRUCTION.
5. SEE SPECIAL PROVISION FOR "TEMPORARY INFORMATION SIGNING" FOR ADDITIONAL INFORMATION.
6. ONE SIGN ASSEMBLY EQUALS 25.70 SQ. FT. (2.3 SQ. M.)
7. SHALL BE PAID FOR AS TEMPORARY INFORMATION SIGNING.

ALL DIMENSIONS ARE IN INCHES (MILLIMETERS) UNLESS OTHERWISE SHOWN.

REVISIONS	
NAME	DATE
R. MIRS	9-15-97
R. MIRS	12-11-97
T. RAMMACHER	2-2-99
C. JUCIUS	1-31-07

ILLINOIS DEPARTMENT OF TRANSPORTATION
**ARTERIAL ROAD
INFORMATION SIGN**

SCALE: NONE

DRAWN BY DESIGN
CHECKED BY

TC22

PLOT DATE = 3/6/2007
FILE NAME = K:\dms\vd\2022.dgn
USER NAME = bsbarr / JN
USER NAME = bsbarr