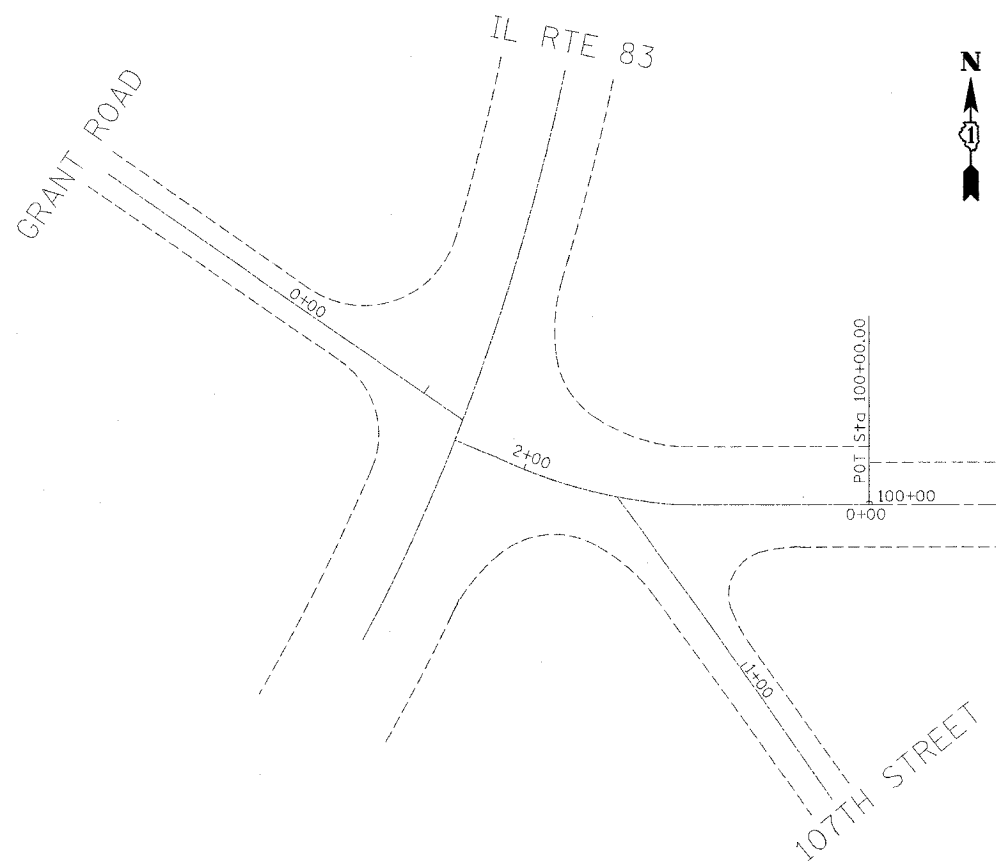


F.A.U. RTE.	SECTION	COUNTY	TOTAL SHEETS	SHEET NO.
3565	(B&U-1) RS-6	COOK	27	7
STA.		TO STA.		
FED. ROAD DIST. NO.		ILLINOIS FED. AID PROJECT		



IL 171

IMPROVEMENT BEGINS STATION 109+12

MATCHLINE STA. 109+61

IL 171

MATCHLINE STA. 109+61

MATCHLINE STA. 124+74

THERMOPLASTIC PAVEMENT MARKING  
4" DOUBLE YELLOW LINE (TYP.)

THERMOPLASTIC PAVEMENT MARKING  
4" SOLID YELLOW NO PASSING ZONE LINE (TYP.)

3' AGGREGATE SHOULDER  
PROP. AGGREGATE WEDGE SHOULDER,  
TYPE B (TYP.)

THERMOPLASTIC PAVEMENT MARKING  
4" YELLOW SKIP DASH  
10' DASH, 30' SPACE (TYP.)

THERMOPLASTIC PAVEMENT MARKING  
4" WHITE LANE LINE  
10' DASH, 30' SPACE (TYP.)

THERMOPLASTIC PAVEMENT MARKING  
4" YELLOW LANE LINE  
10' DASH, 30' SPACE (TYP.)

PROPOSED HOT MIX ASPHALT SURFACE REMOVAL, 2 1/4 "  
PROPOSED HOT MIX ASPHALT SURFACE COURSE,  
MIX "D", N70, 1 1/2 "  
PROPOSED POLY. LEVELING BINDER (MACHINE  
METHOD), IL, -4.75, N50, 3/4 "

THERMOPLASTIC PAVEMENT MARKING  
4" WHITE EDGE LINES (TYP.)

NOTES:  
LIMIT OF RESURFACING ON SIDE-STREETS THROUGH OUT THE IMPROVEMENT SHALL BE TO THE RADIUS OF RETURN OR AS DIRECTED BY THE ENGINEER  
  
ALL FINAL PAVEMENT MARKINGS SHALL BE THERMOPLASTIC (OF THE EXTRUDED TYPE) AND SHOULD BE PLACED IN ACCORDANCE WITH "DISTRICT ONE TYPICAL PAVEMENT MARKINGS" DETAIL, (TC-13).  
  
ALL RAISED REFLECTIVE PAVEMENT MARKINGS SHALL BE PLACED IN ACCORDANCE WITH THE DISTRICT ONE "TYPICAL APPLICATIONS RAISED REFLECTIVE PAVEMENT MARKER DETAIL." (TC-11).

REVISIONS	
NAME	DATE

ILLINOIS DEPARTMENT OF TRANSPORTATION  
  
ILLINOIS ROUTE 171  
IL 83 TO WILLOW SPRINGS ROAD  
  
ROADWAY AND PAVEMENT MARKING PLANS  
  
SCALE: VERT. \_\_\_\_\_  
HORIZ. \_\_\_\_\_  
DATE \_\_\_\_\_  
  
DRAWN BY \_\_\_\_\_  
CHECKED BY \_\_\_\_\_