

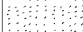

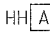


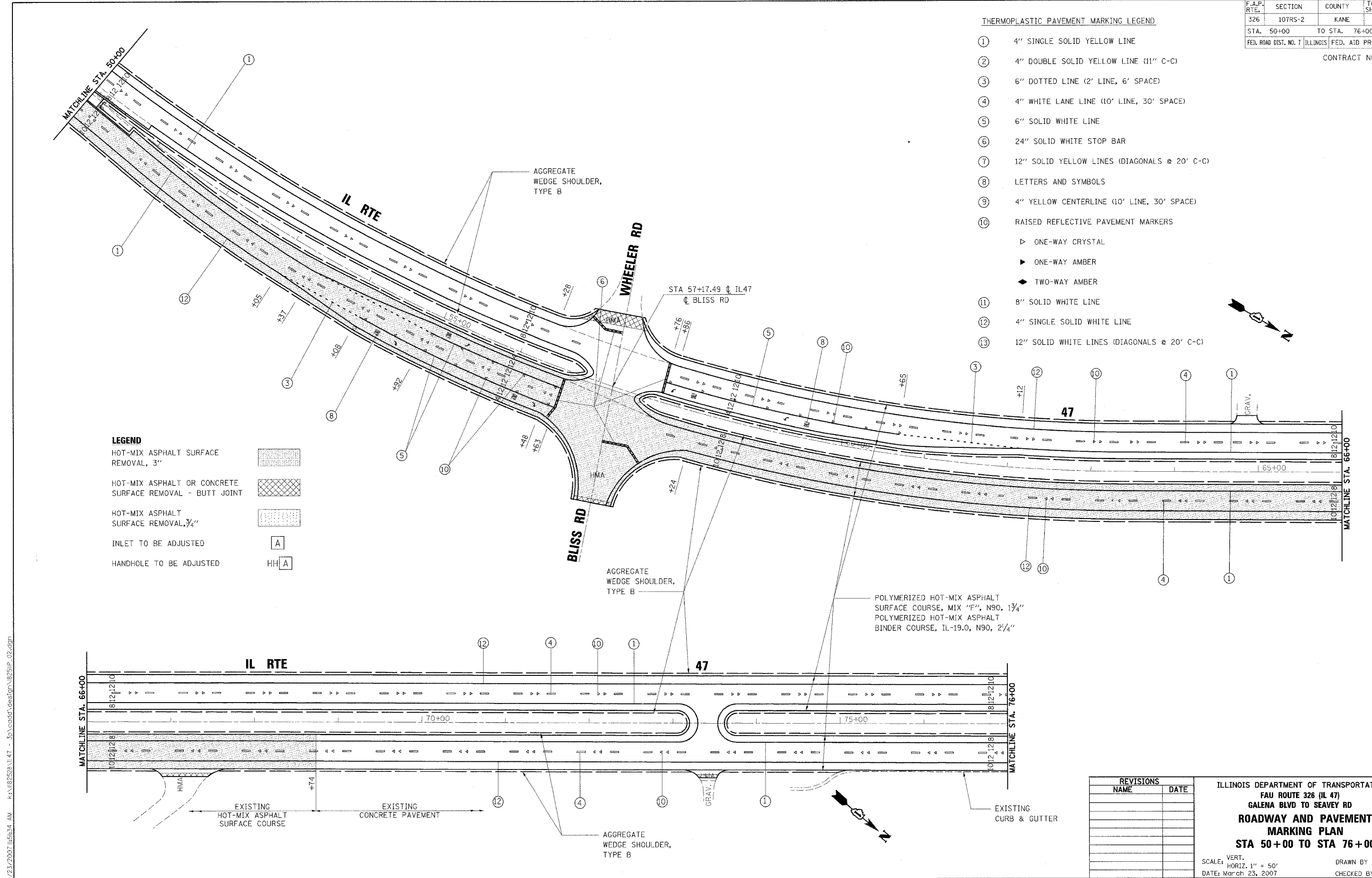
F.A.P. RTE.	SECTION	COUNTY	TOTAL SHEETS	SHEET NO.
326	107RS-2	KANE	31	10
STA. 50+00		TO STA. 76+00		
FED. ROAD DIST. NO. 7 ILLINOIS FED. AID PROJECT				

CONTRACT NO.: 62751

**THERMOPLASTIC PAVEMENT MARKING LEGEND**

- ① 4" SINGLE SOLID YELLOW LINE
- ② 4" DOUBLE SOLID YELLOW LINE (11" C-C)
- ③ 6" DOTTED LINE (2' LINE, 6' SPACE)
- ④ 4" WHITE LANE LINE (10' LINE, 30' SPACE)
- ⑤ 6" SOLID WHITE LINE
- ⑥ 24" SOLID WHITE STOP BAR
- ⑦ 12" SOLID YELLOW LINES (DIAGONALS @ 20' C-C)
- ⑧ LETTERS AND SYMBOLS
- ⑨ 4" YELLOW CENTERLINE (10' LINE, 30' SPACE)
- ⑩ RAISED REFLECTIVE PAVEMENT MARKERS
  - ▷ ONE-WAY CRYSTAL
  - ▶ ONE-WAY AMBER
  - ◀ TWO-WAY AMBER
- ⑪ 8" SOLID WHITE LINE
- ⑫ 4" SINGLE SOLID WHITE LINE
- ⑬ 12" SOLID WHITE LINES (DIAGONALS @ 20' C-C)

- LEGEND**
- HOT-MIX ASPHALT SURFACE REMOVAL, 3" 
  - HOT-MIX ASPHALT OR CONCRETE SURFACE REMOVAL - BUTT JOINT 
  - HOT-MIX ASPHALT SURFACE REMOVAL, 3/4" 
  - INLET TO BE ADJUSTED 
  - HANDHOLE TO BE ADJUSTED 



REVISIONS	
NAME	DATE

ILLINOIS DEPARTMENT OF TRANSPORTATION  
 FAU ROUTE 326 (IL 47)  
 GALENA BLVD TO SEAVEY RD  
**ROADWAY AND PAVEMENT MARKING PLAN**  
**STA 50+00 TO STA 76+00**

SCALE: VERT. 1" = 5'  
 HORIZ. 1" = 50'  
 DATE: March 23, 2007

DRAWN BY NEC  
 CHECKED BY SPF

3/23/2007 11:51:34 AM k:\1182528\IL47 - 3d\cadd\des\ipm\B25IP\_02.dgn