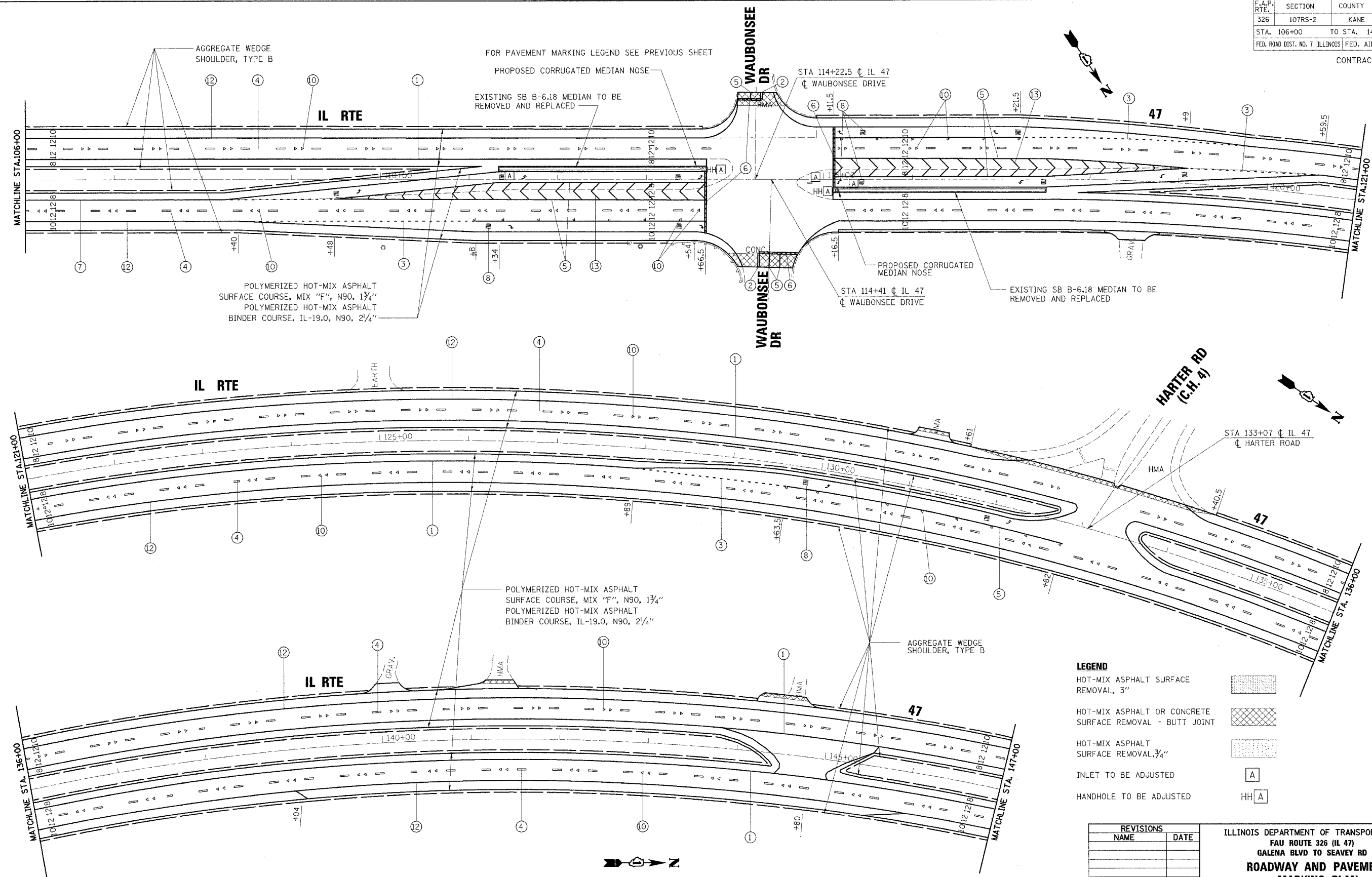


F.A.P. RTE.	SECTION	COUNTY	TOTAL SHEETS	SHEET NO.
326	107RS-2	KANE	31	12
STA. 106+00		TO STA. 147+00		
FED. ROAD DIST. NO. 7		ILLINOIS FED. AID PROJECT		

CONTRACT NO.: 62751



POLYMERIZED HOT-MIX ASPHALT SURFACE COURSE, MIX "F", N90, 1 3/4"
 POLYMERIZED HOT-MIX ASPHALT BINDER COURSE, IL-19.0, N90, 2 1/4"

FOR PAVEMENT MARKING LEGEND SEE PREVIOUS SHEET
 PROPOSED CORRUGATED MEDIAN NOSE

EXISTING SB B-6.18 MEDIAN TO BE REMOVED AND REPLACED

PROPOSED CORRUGATED MEDIAN NOSE

STA 114+41 C IL 47
 C WAUBONSEE DRIVE

EXISTING SB B-6.18 MEDIAN TO BE REMOVED AND REPLACED

IL RTE

IL RTE

POLYMERIZED HOT-MIX ASPHALT SURFACE COURSE, MIX "F", N90, 1 3/4"
 POLYMERIZED HOT-MIX ASPHALT BINDER COURSE, IL-19.0, N90, 2 1/4"

AGGREGATE WEDGE SHOULDER, TYPE B

HARTEK RD
 (C.H. 4)

STA 133+07 C IL 47
 C HARTEK ROAD

LEGEND

- HOT-MIX ASPHALT SURFACE REMOVAL, 3"
- HOT-MIX ASPHALT OR CONCRETE SURFACE REMOVAL - BUTT JOINT
- HOT-MIX ASPHALT SURFACE REMOVAL, 1/4"
- INLET TO BE ADJUSTED
- HANDHOLE TO BE ADJUSTED

REVISIONS	
NAME	DATE

ILLINOIS DEPARTMENT OF TRANSPORTATION
 FAU ROUTE 326 (IL 47)
 GALENA BLVD TO SEAVER RD
ROADWAY AND PAVEMENT MARKING PLAN
 STA 106+00 TO STA 147+00

SCALE: VERT. 1" = 50'
 HORIZ. 1" = 50'
 DATE: March 23, 2007
 DRAWN BY NEC
 CHECKED BY SPF

3/23/2007 10:52:05 AM k:\1182528\1147 - 3p\cadd\cadd\ipm\1182528\1147.dgn