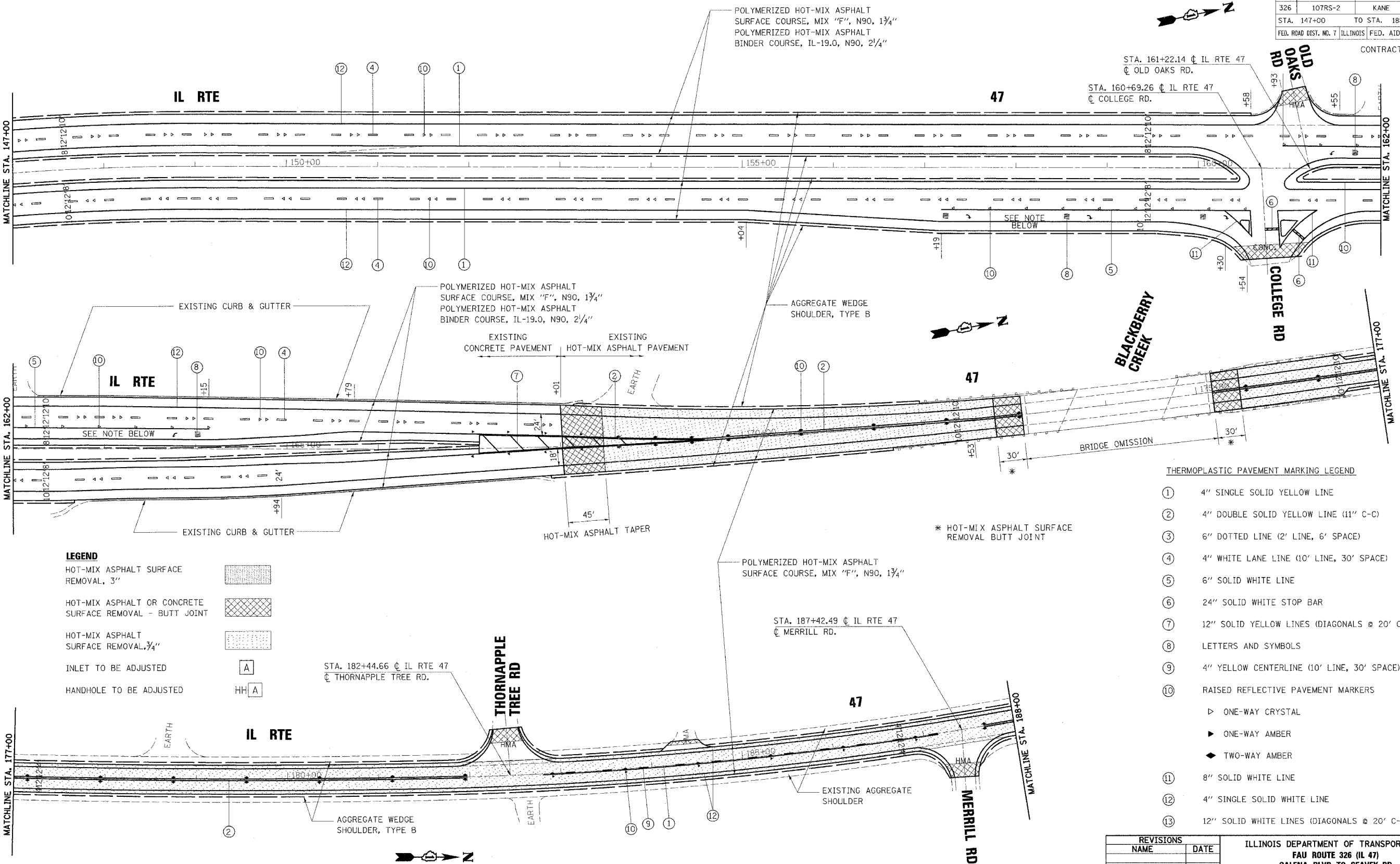


F.A.P. RTE.	SECTION	COUNTY	TOTAL SHEETS	SHEET NO.
326	107RS-2	KANE	31	13
STA. 147+00 TO STA. 188+00				
FED. ROAD DIST. NO. 7		ILLINOIS	FED. AID PROJECT	

CONTRACT NO.: 62751



LEGEND

- HOT-MIX ASPHALT SURFACE REMOVAL, 3"
- HOT-MIX ASPHALT OR CONCRETE SURFACE REMOVAL - BUTT JOINT
- HOT-MIX ASPHALT SURFACE REMOVAL, 3/4"
- INLET TO BE ADJUSTED
- HANDHOLE TO BE ADJUSTED

THERMOPLASTIC PAVEMENT MARKING LEGEND

- ① 4" SINGLE SOLID YELLOW LINE
- ② 4" DOUBLE SOLID YELLOW LINE (11" C-C)
- ③ 6" DOTTED LINE (2' LINE, 6' SPACE)
- ④ 4" WHITE LANE LINE (10' LINE, 30' SPACE)
- ⑤ 6" SOLID WHITE LINE
- ⑥ 24" SOLID WHITE STOP BAR
- ⑦ 12" SOLID YELLOW LINES (DIAGONALS @ 20' C-C)
- ⑧ LETTERS AND SYMBOLS
- ⑨ 4" YELLOW CENTERLINE (10' LINE, 30' SPACE)
- ⑩ RAISED REFLECTIVE PAVEMENT MARKERS
 - ▷ ONE-WAY CRYSTAL
 - ▶ ONE-WAY AMBER
 - ◆ TWO-WAY AMBER
- ⑪ 8" SOLID WHITE LINE
- ⑫ 4" SINGLE SOLID WHITE LINE
- ⑬ 12" SOLID WHITE LINES (DIAGONALS @ 20' C-C)

REVISIONS	
NAME	DATE

ILLINOIS DEPARTMENT OF TRANSPORTATION
 FAU ROUTE 326 (IL 47)
 GALENA BLVD TO SEAVEY RD
ROADWAY AND PAVEMENT MARKING PLAN
STA 147+00 TO STA 188+00

SCALE: VERT. 1" = 50'
 DATE: March 23, 2007
 DRAWN BY NEC
 CHECKED BY SPF