

F.A.P. RTE.	SECTION	COUNTY	TOTAL SHEETS	SHEET NO.
326	107RS-2	KANE	31	14
STA. 188+00		TO STA. 229+00		
FED. ROAD DIST. NO. 7 ILLINOIS FED. AID PROJECT				

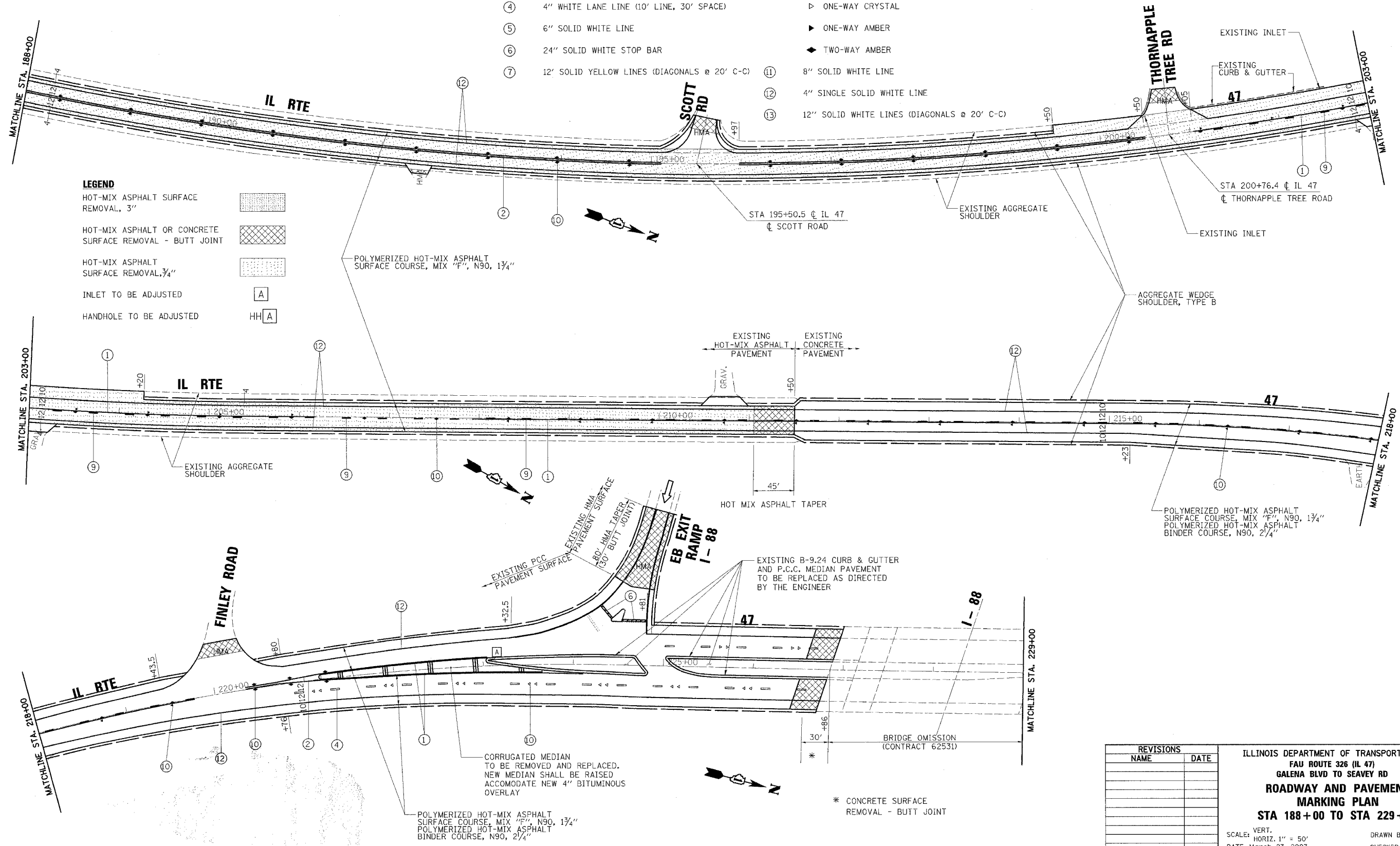
CONTRACT NO.: 62751

TERMOPLASTIC PAVEMENT MARKING LEGEND

- |  |   |
|--|---|
| ① 4" SINGLE SOLID YELLOW LINE                  | ⑧ LETTERS AND SYMBOLS                         |
| ② 4" DOUBLE SOLID YELLOW LINE (11" C-C)        | ⑨ 4" YELLOW CENTERLINE (10' LINE, 30' SPACE)  |
| ③ 6" DOTTED LINE (2' LINE, 6' SPACE)           | ⑩ RAISED REFLECTIVE PAVEMENT MARKERS          |
| ④ 4" WHITE LANE LINE (10' LINE, 30' SPACE)     | ▷ ONE-WAY CRYSTAL                             |
| ⑤ 6" SOLID WHITE LINE                          | ▶ ONE-WAY AMBER                               |
| ⑥ 24" SOLID WHITE STOP BAR                     | ◆ TWO-WAY AMBER                               |
| ⑦ 12' SOLID YELLOW LINES (DIAGONALS @ 20' C-C) | ⑪ 8" SOLID WHITE LINE                         |
|  | ⑫ 4" SINGLE SOLID WHITE LINE                  |
|  | ⑬ 12" SOLID WHITE LINES (DIAGONALS @ 20' C-C) |

LEGEND

- HOT-MIX ASPHALT SURFACE REMOVAL, 3"
- HOT-MIX ASPHALT OR CONCRETE SURFACE REMOVAL - BUTT JOINT
- HOT-MIX ASPHALT SURFACE REMOVAL, 3/4"
- INLET TO BE ADJUSTED
- HANDHOLE TO BE ADJUSTED



REVISIONS	
NAME	DATE

ILLINOIS DEPARTMENT OF TRANSPORTATION  
 FAU ROUTE 326 (IL 47)  
 GALENA BLVD TO SEAVEY RD  
**ROADWAY AND PAVEMENT MARKING PLAN**  
**STA 188+00 TO STA 229+00**

SCALE: VERT. 1" = 50'  
 HORIZ. 1" = 50'  
 DATE: March 23, 2007

DRAWN BY NEC  
 CHECKED BY SPF

3/23/2007 11:52:13 AM K:\1182528\1147 - 3p\cadd\desig\1182528\1147.dgn