

F.A.I. R.T.E.	SECTION	COUNTY	TOTAL SHEETS	SHEET NO.
55	99 (1&2) WRS	WILL	334	1
			+11	
			345	

STATE OF ILLINOIS
DEPARTMENT OF TRANSPORTATION
DIVISION OF HIGHWAYS

**PROPOSED
HIGHWAY PLANS**

F.A.I. ROUTE 55 (INTERSTATE 55)
WIDENING AND RESURFACING
FROM F.A.I. ROUTE 80 TO BLACK ROAD

SECTION: 99 (1&2) WRS
~~PROJECT NO.: IM-055-6(228)250~~

WILL COUNTY
C-91-093-05



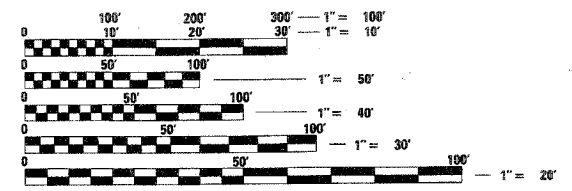
FOR INDEX OF SHEETS, SEE SHEET NO. 2

TRAFFIC DATA

ADT (2030):
US 6 to I-80 = 64,000
I-80 to IL 59 = 83,000
IL 59 to U.S. 52 = 56,000
U.S. 52 to U.S. 30 = 60,000
POSTED SPEED : 65 mph

MICROFILMED _____
REEL NUMBER _____
AWARDED _____
RESIDENT ENGINEER _____
AS BUILT CHANGES WERE MADE
ON THE FOLLOWING SHEETS _____

DISTRICT 1 - DESIGN /CONSULTANT SERVICES
PROJECT MANAGER: RAJENDRA SHAH 847-705-4555



FULL SIZE PLANS HAVE BEEN PREPARED USING STANDARD ENGINEERING SCALES. REDUCED SIZED PLANS WILL NOT CONFORM TO STANDARD SCALES. IN MAKING MEASUREMENTS ON REDUCED PLANS, THE ABOVE SCALES MAY BE USED.

J.U.L.I.E.
JOINT UTILITY LOCATION INFORMATION FOR EXCAVATION
1-800-892-0123

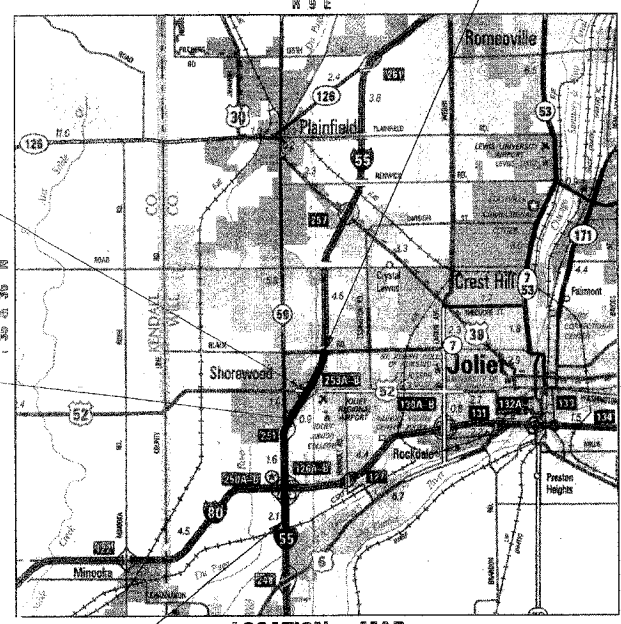
CONTRACT NO. 62895

S.N. 099-0139
US ROUTE 52 OVER I-55
PIER CRASHWALL MODIFICATION

S.N. 099-4842
IL-55 OVER I-55
PIER CRASHWALL MODIFICATION

I-55
STA 107+28.31 (NORTHBOUND)
STA 106+03.53 (SOUTHBOUND)
PROJECT BEGINS

I-55
STA 402+65.07
PROJECT ENDS



I-55 GROSS LENGTH OF PROJECT = 21,661.44 feet (6.103 miles)
I-55 NET LENGTH OF PROJECT = 21,661.44 feet (6.103 miles)



DOUGLAS D. HANSEN, P.E.
IL. REG. NO. 062-045293
EXPIRES: 11/30/2007
DATE: 2/8/2007

TENG
TENG & ASSOCIATES, INC.
ENGINEERS/ARCHITECTS/PLANNERS
205 N. MICHIGAN AVE. CHICAGO, IL 60601

STATE OF ILLINOIS
DEPARTMENT OF TRANSPORTATION
DIVISION OF HIGHWAYS
SUBMITTED February 14, 2007
Diane O'Keefe
DEPUTY DIRECTOR OF HIGHWAYS, REGION ENGINEER
May 11, 2007
Eric E. Harbo
INTER-ENGINEER OF DESIGN AND ENVIRONMENT
May 11, 2007
Milton R. See, P.E.
DIRECTOR OF HIGHWAYS, CHIEF ENGINEER

PRINTED BY THE AUTHORITY
OF THE STATE OF ILLINOIS

F.A.I. RTE.	SECTION	COUNTY	TOTAL SHEETS	SHEET NO.
55	99 (1&2) WRS	WILL	334	3
STA.		TO STA.		
FED. ROAD DIST. NO.		ILLINOIS	FED. AID PROJECT	

GENERAL NOTES

- BEFORE STARTING ANY EXCAVATION, THE CONTRACTOR SHALL CALL "JULIE" AT 800-892-0123 FOR FIELD LOCATIONS OF BURIED ELECTRIC, TELEPHONE AND GAS FACILITIES. (48 HOURS NOTIFICATION REQUIRED).
- THE CONTRACTOR SHALL COORDINATE CONSTRUCTION ACTIVITIES WITH AFFECTED UTILITY COMPANIES AND MUNICIPALITIES.
- THE CONTRACTOR WILL NOT BE ALLOWED TO SET UP A YARD OR FIELD OFFICE ON STATE PROPERTY WITHOUT WRITTEN PERMISSION FROM THE DEPARTMENT.
- BARRICADES: THE CONTRACTOR SHALL PROVIDE AND INSTALL TWO (2) WEIGHTED SAND BAGS ON EACH TYPE I OR TYPE II BARRICADE USED - ONE (1) WEIGHTED SAND BAG ACROSS EACH BOTTOM RAIL.
- WHEN ARTIFICIAL LIGHTING IS USED IN NIGHT OPERATIONS THE CONTRACTOR SHALL EXERCISE THE UTMOST PRECAUTIONS IN PREVENTING ADVERSE VISIBILITY TO THE MOTORING PUBLIC AND ADJOINING COMMERCIAL AND RESIDENTIAL AREAS.
- BARRIER WALL MARKERS, TYPE C SHALL BE INSTALLED ON MEDIAN CONCRETE BARRIER WALL AND PARAPETS AT A HEIGHT OF 28 INCHES FROM THE TOP OF SHOULDER TO THE BOTTOM OF THE REFLECTOR AND SPACED AT 50 FEET CENTER-TO-CENTER ON CURVES AND 100 FEET CENTER-TO-CENTER ON TANGENTS OR AS DIRECTED BY THE TRAFFIC OPERATIONS FIELD ENGINEER. THE BARRIER WALL MARKERS SHALL BE INSTALLED DURING STAGE I, PRIOR TO OPENING THE WIDENED PAVEMENT TO TRAFFIC.
- CONTRACTS 60B85, 60B86, 62895, 60B46, 62896 AND 60B47 ARE EXPECTED TO RUN SIMULTANEOUSLY. TRAFFIC CONTROL AND OTHER CONSTRUCTION OPERATIONS BETWEEN THESE SIX CONTRACTS SHALL BE COORDINATED THROUGHOUT THE DURATION OF THE PROJECT IN ORDER TO PROVIDE A SAFE AND EFFICIENT WORK ENVIRONMENT. THIS WORK SHALL BE INCLUDED IN THE COST FOR "TRAFFIC CONTROL AND PROTECTION (EXPRESSWAYS)".
- A PAINT STRIPE SHALL BE APPLIED TO THE FACE OF BARRIER WALL ADJACENT TO ALL DRAINAGE STRUCTURES. THE STRIPE SHALL BE 4" WIDE BY 12 INCHES LONG AND EXTEND VERTICALLY AT 90 DEGREES FROM THE TOP EDGE OF THE BARRIER. THE PAINT WILL BE SPECIFIED AS ORANGE PAINT. THE COST OF THE STRIPE IS TO BE INCLUDED IN THE COST OF THE CONCRETE BARRIER OF TYPE AND SIZE SPECIFIED.
- THE LIMIT SHOWN ON THE PLANS BETWEEN THE PAY ITEMS "BITUMINOUS CONCRETE SHOULDER REMOVAL" IN THE MEDIAN AND "HOT-MIX ASPHALT SURFACE REMOVAL 3-1/2" " ON THE MAINLINE PAVEMENT IS BASED ON THE THEORETICAL EDGE OF PAVEMENT LINE WHICH IS LOCATED AT 20' FROM THE I-55 CENTERLINE. THE EXISTING MAINLINE PAVEMENT IN BOTH THE NB AND SB DIRECTIONS CONSISTS OF A PCC BASE WITH A BITUMINOUS OVERLAY. THE CONTRACTOR SHALL REMOVE THE EXISTING BITUMINOUS SHOULDER TO THE EDGE OF THE EXISTING PCC BASE COURSE TO THE SATISFACTION OF THE ENGINEER. THE COST FOR THIS WORK INCLUDING ANY ADDITIONAL SET UPS SHALL BE INCLUDED IN THE CONTRACT UNIT PRICE FOR "BITUMINOUS CONCRETE SHOULDER REMOVAL". IN ADDITION, THE COST TO REPAIR ANY DAMAGE TO THE EXISTING MAINLINE PAVEMENT INCLUDING RAVELING OF THE EXISTING BITUMINOUS OVERLAY AS A RESULT OF THIS WORK SHALL BE INCLUDED IN THE CONTRACT UNIT PRICE FOR "BITUMINOUS CONCRETE SHOULDER REMOVAL".
- DURING THE 2007 CONSTRUCTION SEASON, THE CONTRACTOR SHALL REMOVE THE REFLECTIVE ELEMENT FROM ALL RAISED REFLECTIVE PAVEMENT MARKERS THAT CONFLICT WITH THE TEMPORARY TRAFFIC LANES AS DIRECTED BY THE ENGINEER. PRIOR TO TRANSFERRING TRAFFIC INTO THE TRAFFIC CONFIGURATION SHOWN FOR THE TYPICAL SECTION FOR WINTER SHUTDOWN AT THE END OF THE 2007 CONSTRUCTION SEASON, THE CONTRACTOR SHALL REPLACE THE REFLECTIVE ELEMENT WITH A NEW REFLECTIVE ELEMENT. DURING THE 2008 CONSTRUCTION SEASON IN AREAS BEYOND THE PAVEMENT MILLING AND RESURFACING LIMITS, THE CONTRACTOR SHALL REMOVE THE REFLECTIVE ELEMENT FROM ALL RAISED REFLECTIVE PAVEMENT MARKERS THAT CONFLICT WITH THE TEMPORARY TRAFFIC LANES AS DIRECTED BY THE ENGINEER. THE CONTRACTOR SHALL REPLACE THE REFLECTIVE ELEMENT WITH A NEW REFLECTIVE ELEMENT AT THE END OF THE PROJECT. THE COST OF REMOVAL AND REPLACEMENT OF THE REFLECTIVE ELEMENT SHALL BE INCLUDED IN THE CONTRACT UNIT PRICE FOR "REPLACEMENT REFLECTOR."
- THE VARIABLE WIDTH CONCRETE GUTTER ADJACENT TO THE DRAINAGE STRUCTURES SHALL NOT BE CONSTRUCTED UNTIL AFTER THE FRAME AND GRATE ARE ADJUSTED TO THE FINAL GRADE IN STAGE II. THE COST TO REMOVE THE H.M.A. SHOULDER PAVEMENT CONSTRUCTED DURING STAGE I IN THE AREA OF THIS VARIABLE WIDTH PORTION OF THE CONCRETE GUTTER AND THE COST OF THE ADDITIONAL WIDTH OF CONCRETE GUTTER GREATER THAN 10" AS SHOWN AT THE DRAINAGE STRUCTURES SHALL BE INCLUDED IN THE CONTRACT UNIT PRICE PER FOOT FOR CONCRETE GUTTER.
- ANY GUARDRAIL REMOVED AND DEEMED SALVAGEABLE BY THE RESIDENT ENGINEER SHALL BE DELIVERED BY THE CONTRACTOR TO THE NEAREST IDOT MAINTENANCE FACILITY. TEMPORARY STORAGE AND DELIVERY SHALL BE INCLUDED IN THE CONTRACT UNIT PRICE FOR "GUARDRAIL REMOVAL".
- BUTT JOINTS WILL BE INSTALLED AT THE END OF ALL RESURFACING (WHERE RESURFACING MEETS EXISTING PAVEMENT) IN ACCORDANCE WITH THE "BUTT JOINT AND BITUMINOUS TAPER DETAILS" SHEET INCLUDED IN THE PLANS, UNLESS OTHERWISE SPECIFIED.
- THE BITUMINOUS MATERIAL PRIME COAT QUANTITIES HAVE BEEN DETERMINED USING A RATE OF 0.10 GAL/SQ. YD.

GENERAL NOTES (CONT.)

- PRIOR TO STARTING MILLING AND RESURFACING OF THE OUTSIDE SHOULDER IN AREAS ADJACENT TO GUARDRAIL, THE CONTRACTOR SHALL DETERMINE IF THE RAIL ELEMENT OF THE GUARDRAIL WILL NEED TO BE REMOVED TO COMPLETE THIS WORK TO THE SATISFACTION OF THE ENGINEER. IF DEEMED NECESSARY, THE CONTRACTOR SHALL REMOVE THE RAIL ELEMENT OF THE RESPECTIVE GUARDRAIL SECTIONS AND RE-ERECT THE RAIL ELEMENT ON THE SAME DAY IT WAS REMOVED. THE COST FOR THIS WORK WILL BE INCLUDED IN THE CONTRACT UNIT PRICE FOR "HOT-MIX ASPHALT SURFACE REMOVAL (VARIABLE DEPTH)." ANY GUARDRAIL FEATURES DAMAGED DURING CONSTRUCTION SHALL BE REPAIRED OR REPLACED AT THE CONTRACTOR'S EXPENSE.
- PAVEMENT PATCHING QUANTITIES HAVE BEEN INCLUDED IN THE CONTRACT TO ACCOMMODATE THE IMPROVEMENT OF PAVEMENT WHICH SHOWS SIGNS OF FAILURE OR EXCESSIVE CRACKING. THE ENGINEER WILL DETERMINE THE AREAS TO BE PATCHED IN ACCORDANCE WITH THE DISTRICT ONE DETAIL BD-22 FOR "PAVEMENT PATCHING FOR BITUMINOUS SURFACED PAVEMENT." QUANTITIES FOR "HOT-MIX ASPHALT REMOVAL OVER PATCHES" AND "HOT-MIX ASPHALT REPLACEMENT OVER PATCHES" ARE BASED ON THIS WORK BEING DONE AFTER THE MILLING OF THE MAINLINE PAVEMENT HAS BEEN COMPLETED. IF THE CONTRACTOR ELECTS TO PATCH THE PAVEMENT PRIOR TO COMPLETING THE MILLING OF THE MAINLINE PAVEMENT, THE ADDITIONAL DEPTH OF "HOT-MIX ASPHALT REMOVAL OVER PATCHES" AND THE ADDITIONAL TONNAGE REQUIRED FOR "HOT-MIX ASPHALT REPLACEMENT OVER PATCHES" WILL NOT BE MEASURED FOR PAYMENT.
- IF THE OUTSIDE THROUGH LANE NEXT TO EXISTING EXIT/ENTRANCE RAMP IS MILLED, THE CONTRACTOR SHALL NOT LEAVE A GRADE DIFFERENTIAL BETWEEN MILLED LANES AND EXISTING RAMP SURFACE GREATER THAN 1" FOR SPEEDS > 45 MPH AND 1-1/2" FOR SPEEDS 45 MPH OR LESS. A 12" WIDE TEMPORARY RAMP SHALL BE CONSTRUCTED IMMEDIATELY UPON REMOVAL OF THE EXISTING BITUMINOUS SURFACE AS DIRECTED BY THE ENGINEER. THE LENGTH OF THE TEMPORARY RAMP WILL BE MEASURED AND THE AREA CALCULATED BY MULTIPLYING THE LENGTH BY ONE FOOT. THIS WORK SHALL BE PAID FOR AT THE CONTRACT UNIT PRICE PER SQ YD FOR "HOT-MIX ASPHALT SURFACE REMOVAL - BUTT JOINT."
- BASED ON RESULTS OF 98 PAVEMENT CORES TAKEN DURING 2005, THE AVERAGE THICKNESS OF BITUMINOUS OVERLAY IS APPROXIMATELY 7 INCHES IN BOTH DESIGN SECTIONS. FORTY NINE (49) CORES WERE TAKEN IN EACH DIRECTION OF TRAVEL STARTING AT THE I-80 INTERCHANGE TO THE WEBER ROAD INTERCHANGE. THE THICKNESS OF OVERLAY RANGES FROM 3-1/4" TO 13-1/2".
- THE CONTRACTOR SHALL INSTALL NEW DELINEATOR POSTS AND REFLECTORS AT THE LOCATIONS SHOWN IN THE PLANS FOR "DELINEATORS" AND AS SPECIFIED BY THE ENGINEER. THE CONTRACTOR SHALL REMOVE AND DISPOSE OF THE EXISTING DELINEATOR POSTS AND REFLECTORS IN ACCORDANCE WITH THE APPLICABLE PORTIONS OF ARTICLE 202.03 OF THE STANDARD SPECIFICATIONS. THE COST FOR REMOVAL AND DISPOSAL OF THE EXISTING DELINEATOR POSTS AND REFLECTORS WILL NOT BE PAID FOR SEPARATELY BUT SHALL BE INCLUDED IN THE CONTRACT UNIT PRICE FOR "DELINEATORS."
- POROUS GRANULAR EMBANKMENT, SUBGRADE (PGES) HAS BEEN PROVIDED FOR USE AT THE LOCATIONS INDICATED FOR SOILS THAT TEND TO BE UNSUITABLE OR UNSTABLE. THE ACTUAL NEED FOR THE REMOVAL AND REPLACEMENT WITH PGES WILL BE DETERMINED IN THE FIELD AT THE TIME OF CONSTRUCTION BY THE GEOTECHNICAL ENGINEER. ALL POTENTIALLY UNSTABLE SOILS SHOULD BE TESTED WITH A STATIC CONE PENETROMETER AND TREATED IN ACCORDANCE WITH ARTICLE 301.04 AND THE IDOT SUBGRADE STABILITY MANUAL. IF UNSTABLE AND/OR UNSUITABLE MATERIAL IS NOT ENCOUNTERED, THEN THE QUANTITY SHALL BE DEDUCTED AND NO ADDITIONAL COMPENSATION WILL BE DUE TO THE CONTRACTOR.
- TWO WEEKS PRIOR TO PLACING PERMANENT PAVEMENT MARKINGS, CONTACT MS. CORA MATHIS, AREA FIELD ENGINEER, AT (847) 485-6475.
- THE PROPOSED BRIDGE PIER FOR THE FUTURE ILLINOIS ROUTE 59 EXIT RAMP BRIDGE OVER I-55 (S.N. 099-4642) SHALL BE CONSTRUCTED USING THE HORIZONTAL AND VERTICAL CONTROL INFORMATION SHOWN ON SHEET 258.

DRAINAGE NOTES

- THE STATION AND OFFSET OF THE DRAINAGE STRUCTURES ADJACENT TO CONCRETE BARRIER ARE TO THE EDGE OF THE FRAME ADJACENT TO THE CONCRETE BARRIER. THE STATION AND OFFSET OF ALL OTHER DRAINAGE STRUCTURES ARE TO THE CENTER OF THE FRAME.
- STATION OFFSETS AND RIM/GRATE ELEVATIONS FOR DRAINAGE STRUCTURES ADJACENT TO THE BARRIER BASE ARE BASED ON A 3 FOOT WIDE BARRIER BASE THAT IS CONSTRUCTED SYMMETRICAL ABOUT THE CENTERLINE. THE CONTRACTOR SHALL ADJUST THE ELEVATIONS AND OFFSET LOCATIONS SHOWN ON THE PLANS FOR ALL DRAINAGE STRUCTURES INSTALLED ALONG THE CONCRETE BARRIER AS NECESSARY TO ACCOMMODATE THE VARIABLE BARRIER BASE WIDTHS THAT ARE NEEDED TO ACCOMMODATE NORTHBOUND AND SOUTHBOUND ELEVATION DIFFERENTIALS. THIS COST OF THIS WORK SHALL BE INCLUDED IN THE COST FOR THE APPLICABLE DRAINAGE STRUCTURES. FOR ADDITIONAL BARRIER BASE INFORMATION, SEE TYPICAL SECTIONS AND STANDARDS.
- INVERT ELEVATIONS FOR EXISTING PIPES HAVE BEEN SHOWN ON THE PLANS WHEN SURVEY INFORMATION WAS AVAILABLE. THE CONTRACTOR SHALL VERIFY THE INVERT ELEVATIONS FOR EXISTING PIPES IN THE FIELD AT THE TIME OF CONSTRUCTION AND SHALL NOTIFY THE ENGINEER OF ANY DISCREPANCIES.
- FOR INSTALLATION OF PROPOSED DRAINAGE STRUCTURES IN EXISTING SEWERS A PORTION OF THE EXISTING PIPE SHALL BE CUT AND REMOVED. THE PROPOSED STRUCTURE SHALL BE PROVIDED WITH ADEQUATELY SIZED OPENINGS SUCH THAT THE EXISTING PIPE MAY BE CONNECTED AT ITS EXISTING INVERT ELEVATION. THE COST OF THIS WORK WILL NOT BE PAID FOR SEPARATELY, BUT SHALL BE INCLUDED IN THE CONTRACT UNIT PRICE EACH FOR THE TYPE AND KIND OF DRAINAGE STRUCTURE TO BE INSTALLED.
- FOR PROPOSED STORM SEWER OR PIPE CULVERT CONNECTIONS TO EXISTING PIPES, BOX CULVERTS, OR STRUCTURES, THE CONNECTION AND REMOVAL OF CONCRETE TO MAKE NECESSARY HOLES IN THE EXISTING PIPES, EXISTING BOX CULVERTS, OR EXISTING STRUCTURES WILL NOT BE PAID FOR SEPARATELY, BUT SHALL BE INCLUDED IN THE CONTRACT UNIT PRICE PER FOOT FOR STORM SEWERS OR PIPE CULVERTS OF THE DIAMETER, TYPE, AND CLASS SPECIFIED, AND OF THE PARTICULAR KIND OF MATERIAL WHEN SPECIFIED.
- REMOVAL OF MANHOLES, CATCH BASINS AND ANY OTHER EXISTING DRAINAGE STRUCTURES IN THE EXISTING MEDIAN DITCH OF I-55 OR ELSEWHERE ON THE I-55 EXPRESSWAY, SHALL BE PAID FOR AT THE CONTRACT UNIT PRICE EACH FOR "REMOVING MANHOLES", REGARDLESS OF SHAPE, DEPTH OR SIZE OF THE STRUCTURE, EXCEPT FOR MEDIAN INLET BOXES WHICH SHALL BE PAID SEPARATELY AS "MEDIAN INLET BOX REMOVAL."
- TOP OF GRATE ELEVATIONS FOR EXISTING STRUCTURES SHOWN ON THE PLANS WERE DETERMINED BY COMPUTER TERRAIN MODELING. THE RESIDENT ENGINEER MAY REVISE THE TOP OF GRATE ELEVATIONS AT THE TIME OF CONSTRUCTION BASED ON FIELD CONDITIONS.
- REMOVAL OF EXISTING UNDERDRAINS AND HEADWALLS FOR UNDERDRAINS WILL NOT BE PAID FOR SEPARATELY, BUT SHALL BE INCLUDED IN THE CONTRACT UNIT PRICE PER CU. YD. FOR EARTH EXCAVATION.
- DURING STAGE I, THE FRAMES AND GRATES CONSTRUCTED ADJACENT TO THE CONCRETE BARRIER SHALL BE SET FLUSH WITH THE LEVEL OF THE BINDER COURSE AND THE GRATES SHALL BE BOLTED DOWN. IMMEDIATELY PRIOR TO PLACING THE SURFACE COURSE DURING STAGE III OR AS DIRECTED BY THE ENGINEER, THE BOLTS AND ASSOCIATED HARDWARE SHALL BE REMOVED AND THE FRAMES AND GRATES SHALL BE ADJUSTED TO THE FINAL SURFACE ELEVATION IN ACCORDANCE WITH SECTION 603 "ADJUSTING FRAMES AND GRATES OF DRAINAGE AND UTILITY STRUCTURES." THE BOLTS AND ASSOCIATED HARDWARE SHALL BE DELIVERED TO THE I-55 BOLINGBROOK MAINTENANCE YARD AT 151 EAST SOUTH FRONTAGE ROAD, BOLINGBROOK, IL 60440 (PHONE #630.739.5641). THE COST OF BOLTING THE GRATES DURING STAGE I AND THEN REMOVING THE BOLTS AND ASSOCIATED HARDWARE AND DELIVERING THEM TO THE IDOT MAINTENANCE FACILITY SHALL BE INCLUDED IN THE CONTRACT UNIT PRICE FOR FRAMES AND GRATES OF THE TYPE SPECIFIED.

PLOT DATE = 02/22/07
 FILE NAME = I:\62895\62895.DWG
 USER NAME = BUSEN
 2-22-2007 11:25:58
 C:\DOCUMENTS\62895\62895.DWG

REVISIONS	
NAME	DATE

ILLINOIS DEPARTMENT OF TRANSPORTATION
 FAI ROUTE 55 (I-80 TO BLACK ROAD)
 WIDENING AND RESURFACING

GENERAL NOTES AND DRAINAGE NOTES

SCALE: N.T.S. DRAWN BY AG
 DATE 02/23/07 CHECKED BY DDH

TENG
 TENG & ASSOCIATES, INC.
 ENGINEERS/ARCHITECTS/PLANNERS
 CHICAGO, ILLINOIS

Rev. 5-31-07

F.A.I. RTE.	SECTION	COUNTY	TOTAL SHEETS	SHEET NO.
55	99 (I&2) WRS	WILL	334	4
STA.		TO STA.		
FED. ROAD DIST. NO.	ILLINOIS	FED. AID PROJECT		

100% STATE URBAN

CODE NO.	ITEM	UNIT	TOTAL QUANTITY	ROADWAY		PROP	EXIST	US 52	SIGNING	LIGHTING
				1000-2A	X271-2A	IL 59	IL 59	SFTY-2A		
20100110	TREE REMOVAL (6 TO 15 UNITS DIAMETER)	UNIT	97							
20100210	TREE REMOVAL (OVER 15 UNITS DIAMETER)	UNIT	170	170						
20101000	TEMPORARY FENCE	FOOT	1312	1312						
20200100	EARTH EXCAVATION	CU YD	29571	29571						
20201200	REMOVAL AND DISPOSAL OF UNSUITABLE MATERIAL	CU YD	22614	22614						
20700420	POROUS GRANULAR EMBANKMENT, SUBGRADE	CU YD	5851	5851						
20800150	TRENCH BACKFILL	CU YD	3694	3694						
21001000	GEOTECHNICAL FABRIC FOR GROUND STABILIZATION	SQ YD	21618	21618						
21101625	TOPSOIL FURNISH AND PLACE, 6"	SQ YD	7924	7924						
21101815	COMPOST FURNISH AND PLACE, 4"	SQ YD	24941	24941						
25000210	SEEDING, CLASS 2A	ACRE	1.67	1.67						
25000310	SEEDING, CLASS 4	ACRE	4.51	4.51						
25000400	NITROGEN FERTILIZER NUTRIENT	POUND	150	150						
25000500	PHOSPHORUS FERTILIZER NUTRIENT	POUND	150	150						
25000600	POTASSIUM FERTILIZER NUTRIENT	POUND	150	150						
25002024	SEEDING, CLASS 4B (MODIFIED)	ACRE	0.64	0.64						
25100115	MULCH, METHOD 2	ACRE	7.57	7.57						
25100630	EROSION CONTROL BLANKET	SQ YD	29927	29927						
28000250	TEMPORARY EROSION CONTROL SEEDING	POUND	693	693						
28000300	TEMPORARY DITCH CHECKS	EACH	31	31						
28000500	INLET AND PIPE PROTECTION	EACH	4	4						
28000510	INLET FILTERS	EACH	272	272						
28100105	STONE RIPRAP, CLASS A3	SQ YD	156	156						
28100107	STONE RIPRAP, CLASS A4	SQ YD	132	132						
28200200	FILTER FABRIC	SQ YD	132	132						
31101400	SUB-BASE GRANULAR MATERIAL, TYPE B 6"	SQ YD	3522	3522						
35501316	HOT-MIX ASPHALT BASE COURSE, 8"	SQ YD	89656	89656						
35501330	HOT-MIX ASPHALT BASE COURSE, 11 1/2"	SQ YD	3262	3262						
40600200	BITUMINOUS MATERIALS (PRIME COAT)	TON	196	196						
40600300	AGGREGATE (PRIME COAT)	TON	144	144						
40600400	MIXTURE FOR CRACKS, JOINTS, AND FLANGEWAYS	TON	49.8	49.8						
40600895	CONSTRUCTING TEST STRIP	EACH	6	6						
40600982	HOT-MIX ASPHALT SURFACE REMOVAL - BUTT JOINT	SQ YD	1893	1893						
40601005	HOT-MIX ASPHALT REPLACEMENT OVER PATCHES	TON	741	741						
40603340	HOT-MIX ASPHALT SURFACE COURSE, MIX "D", N70	TON	4079	4079						
42001300	PROTECTIVE COAT	SQ YD	2657	2657						
44000100	PAVEMENT REMOVAL	SQ YD	389	389						
44000163	HOT-MIX ASPHALT SURFACE REMOVAL, 3 1/2"	SQ YD	126313	126313						
44000198	HOT-MIX ASPHALT SURFACE REMOVAL, VARIABLE DEPTH	SQ YD	38472	38472						
44000920	BITUMINOUS CONCRETE SHOULDER REMOVAL	SQ YD	30472	30472						
44002214	HOT-MIX ASPHALT REMOVAL OVER PATCHES, 3 1/2"	SQ YD	3779	3779						
44004510	PORTLAND CEMENT CONCRETE SHOULDER REMOVAL	SQ YD	644	644						
44201761	CLASS D PATCHES, TYPE I, 10 INCH	SQ YD	687	687						
44201765	CLASS D PATCHES, TYPE II, 10 INCH	SQ YD	2171	2171						
44201769	CLASS D PATCHES, TYPE III, 10 INCH	SQ YD	325	325						
44201771	CLASS D PATCHES, TYPE IV, 10 INCH	SQ YD	44	44						

* SPECIALTY ITEMS
 URBAN, 90% FEDERAL, 10% STATE

REVISIONS	
NAME	DATE

ILLINOIS DEPARTMENT OF TRANSPORTATION
 FAI ROUTE 55 (I-80 TO BLACK ROAD)
 WIDENING AND RESURFACING

SUMMARY OF QUANTITIES
 I

SCALE: N.T.S. DRAWN BY AG
 DATE 03/22/07 CHECKED BY DDH

TENG
 TENG & ASSOCIATES, INC.
 ENGINEERS/ARCHITECTS/PLANNERS
 CHICAGO, ILLINOIS

PLT DATE = #DATE#
 FILE NAME = #FILE#
 USER NAME = #USER#
 1:00914001.DWG, 1:00914001.DWG
 3:22:2007, 13:06:27
 S:\DOCUMENT\422361801\CIVIL\DWG\500614001.DWG

F.A.I. RTE.	SECTION	COUNTY	TOTAL SHEETS	SHEET NO.
55	99 (I&2) WRS	WILL	334	5
STA.		TO STA.		
FED. ROAD DIST. NO.		ILLINOIS FED. AID PROJECT		

100% STATE URBAN

CODE NO.	ITEM	UNIT	TOTAL QUANTITY	ROADWAY I000-2A	PROP IL 59 X271-2A	EXIST IL 59 SFTY-2A	US 52 SFTY-2A	SIGNING Y002-1C	LIGHTING Y030-1E
44300200	STRIP REFLECTIVE CRACK CONTROL TREATMENT	FOOT	126935	126935					
48101600	AGGREGATE SHOULDERS, TYPE B 8"	SQ YD	1662	1662					
50105220	PIPE CULVERT REMOVAL	FOOT	576	576					
50200100	STRUCTURE EXCAVATION	CU YD	103	41	58		4		
50300225	CONCRETE STRUCTURES	CU YD	91.7	5.5	60.2	4.6	21.4		
50800105	REINFORCEMENT BARS	POUND	10460	3190	7110			160	
50800205	REINFORCEMENT BARS, EPOXY COATED	POUND	21930		18720	440	2770		
51500100	NAME PLATES	EACH	1		1				
51602000	PERMANENT CASING	FOOT	63	63					
* 51603000	DRILLED SHAFT IN SOIL	CU YD	38.8	11.5	27.3				
* 51604000	DRILLED SHAFT IN ROCK	CU YD	3.0		3.0				
54213657	PRECAST REINFORCED CONCRETE FLARED END SECTIONS 12"	EACH	4	4					
54213663	PRECAST REINFORCED CONCRETE FLARED END SECTIONS 18"	EACH	5	5					
54213669	PRECAST REINFORCED CONCRETE FLARED END SECTIONS 24"	EACH	7	7					
54213681	PRECAST REINFORCED CONCRETE FLARED END SECTIONS 36"	EACH	2	2					
54214509	PRECAST REINFORCED CONCRETE FLARED END SECTIONS, EQUIVALENT ROUND-SIZE 24"	EACH	4	4					
54215979	REINFORCED CONCRETE PIPE ELBOW 24"	EACH	18	18					
54247130	GRATING FOR CONCRETE FLARED END SECTION 24"	EACH	3	3					
54247170	GRATING FOR CONCRETE FLARED END SECTION 36"	EACH	1	1					
54248130	GRATING FOR CONCRETE FLARED END SECTION EQUIVALENT ROUND-SIZE 24"	EACH	3	3					
55019600	STORM SEWERS, TYPE 1, REINFORCED CONCRETE CULVERT, STORM DRAIN, AND SEWER PIPE, CLASS IV 15"	FOOT	486	486					
55019700	STORM SEWERS, TYPE 1, REINFORCED CONCRETE CULVERT, STORM DRAIN, AND SEWER PIPE, CLASS IV 18"	FOOT	135	135					
55020500	STORM SEWERS, TYPE 1, REINFORCED CONCRETE CULVERT, STORM DRAIN, AND SEWER PIPE, CLASS II 48"	FOOT	9	9					
55021600	STORM SEWERS, TYPE 2, REINFORCED CONCRETE CULVERT, STORM DRAIN, AND SEWER PIPE, CLASS III 12"	FOOT	2027	2027					
55021700	STORM SEWERS, TYPE 2, REINFORCED CONCRETE CULVERT, STORM DRAIN, AND SEWER PIPE, CLASS III 15"	FOOT	4936	4936					
55021800	STORM SEWERS, TYPE 2, REINFORCED CONCRETE CULVERT, STORM DRAIN, AND SEWER PIPE, CLASS III 18"	FOOT	5073	5073					
55021900	STORM SEWERS, TYPE 2, REINFORCED CONCRETE CULVERT, STORM DRAIN, AND SEWER PIPE, CLASS III 21"	FOOT	856	856					
55022000	STORM SEWERS, TYPE 2, REINFORCED CONCRETE CULVERT, STORM DRAIN, AND SEWER PIPE, CLASS III 24"	FOOT	2360	2360					
55022100	STORM SEWERS, TYPE 2, REINFORCED CONCRETE CULVERT, STORM DRAIN, AND SEWER PIPE, CLASS III 27"	FOOT	148	148					
55022200	STORM SEWERS, TYPE 2, REINFORCED CONCRETE CULVERT, STORM DRAIN, AND SEWER PIPE, CLASS III 30"	FOOT	81	81					
55022400	STORM SEWERS, TYPE 2, REINFORCED CONCRETE CULVERT, STORM DRAIN, AND SEWER PIPE, CLASS III 36"	FOOT	299	299					
55034200	STORM SEWERS, TYPE 1, REINFORCED CONCRETE ELLIPTICAL PIPE, SPAN 23, RISE 14	FOOT	164	164					
55034300	STORM SEWERS, TYPE 1, REINFORCED CONCRETE ELLIPTICAL PIPE, SPAN 30, RISE 19	FOOT	245	245					
55035400	STORM SEWERS, TYPE 2, REINFORCED CONCRETE ELLIPTICAL PIPE, SPAN 30, RISE 19	FOOT	2219	2219					
55035600	STORM SEWERS, TYPE 2, REINFORCED CONCRETE ELLIPTICAL PIPE, SPAN 38, RISE 24	FOOT	805	805					
55039700	STORM SEWERS TO BE CLEANED	FOOT	2031	2031					
55100500	STORM SEWER REMOVAL 12"	FOOT	16	16					
55100700	STORM SEWER REMOVAL 15"	FOOT	29	29					
55100900	STORM SEWER REMOVAL 18"	FOOT	392	392					
55101200	STORM SEWER REMOVAL 24"	FOOT	249	249					
552A0900	STORM SEWERS JACKED IN PLACE, CLASS A 24"	FOOT	73	73					
58600100	SAND BACKFILL	CU YD	105	105					
58700300	CONCRETE SEALER	SQ FT	2354		1028	183	1143		
60100600	CONCRETE HEADWALL FOR PIPE DRAINS	EACH	1	1					
60107700	PIPE UNDERDRAINS 6"	FOOT	30991	30991					
60108200	PIPE UNDERDRAINS 6" (SPECIAL)	FOOT	423	423					

A

PLOT DATE = 03/22/07
 PLOT SCALE = 1"=100'
 USER NAME = MUSER8

S:\PROJECTS\2006\ARL100N\ARL100N\SUB\ARL100N\CIVIL\DOCS\62895\ARL100N.SHT
 GARCIAZ 5/11/06

100% STATE
 SPECIAL ITEMS
 URBAN: 90% FEDERAL, 10% STATE

REVISIONS	
NAME	DATE

ILLINOIS DEPARTMENT OF TRANSPORTATION
 FAI ROUTE 55 (I-80 TO BLACK ROAD)
 WIDENING AND RESURFACING

SUMMARY OF QUANTITIES
 II

SCALE: N.T.S. DRAWN BY AG
 DATE 03/22/07 CHECKED BY DDH

TENG
 TENG & ASSOCIATES, INC.
 ENGINEERS/ARCHITECTS/PLANNERS
 CHICAGO, ILLINOIS

Rev. 5-31-07

F.A.I. RTE.	SECTION	COUNTY	TOTAL SHEETS	SHEET NO.
55	99 (I&2) WRS	WILL	334	6
STA.		TO STA.		
FED. ROAD DIST. NO.		ILLINOIS FED. AID PROJECT		

CODE NO.	ITEM	UNIT	TOTAL QUANTITY	ROADWAY 1000-2A	PROP	EXIST	US 52	SIGNING	LIGHTING
					IL 59	IL 59			
60200905	CATCH BASINS, TYPE A, 4'-DIAMETER, TYPE 9 FRAME AND GRATE	EACH	4	4					
60201310	CATCH BASINS, TYPE A, 4'-DIAMETER, TYPE 20 FRAME AND GRATE	EACH	196	196					
60201320	CATCH BASINS, TYPE A, 4'-DIAMETER, TYPE 21 FRAME AND GRATE	EACH	12	12					
60205010	CATCH BASINS, TYPE A, 5'-DIAMETER, TYPE 20 FRAME AND GRATE	EACH	41	41					
60205020	CATCH BASINS, TYPE A, 5'-DIAMETER, TYPE 21 FRAME AND GRATE	EACH	11	11					
60219000	MANHOLES, TYPE A, 4'-DIAMETER, TYPE 8 GRATE	EACH	1	1					
60221100	MANHOLES, TYPE A, 5'-DIAMETER, TYPE 1 FRAME, CLOSED LID	EACH	2	2					
60221700	MANHOLES, TYPE A, 5'-DIAMETER, TYPE 8 GRATE	EACH	1	1					
60224035	MANHOLES, TYPE A, 6'-DIAMETER, TYPE 20 FRAME AND GRATE	EACH	3	3					
60300105	FRAMES AND GRATES TO BE ADJUSTED	EACH	270	270					
60500040	REMOVING MANHOLES	EACH	23	23					
60600605	CONCRETE CURB, TYPE B	FOOT	120	120					
60602200	CONCRETE GUTTER	FOOT	28196	28196					
60618320	CONCRETE MEDIAN SURFACE, 6 INCH	SQ FT	687	687					
60621600	CONCRETE MEDIAN, TYPE SM	SQ FT	761	761					
63000000	STEEL PLATE BEAM GUARD RAIL, TYPE A	FOOT	1050	1050					
63100085	TRAFFIC BARRIER TERMINAL, TYPE 6	EACH	3	3					
63100167	TRAFFIC BARRIER TERMINAL TYPE 1, SPECIAL (TANGENT)	EACH	5	5					
63200310	GUARDRAIL REMOVAL	FOOT	15503	15503					
63301210	REMOVE AND RE-ERECT STEEL PLATE BEAM GUARD RAIL, TYPE A	FOOT	125	125					
63500105	DELINEATORS	EACH	130	130					
63700805	CONCRETE BARRIER TRANSITION	FOOT	1558	1558					
63700900	CONCRETE BARRIER BASE	FOOT	21336	21336					
64200105	SHOULDER RUMBLE STRIP	FOOT	75472	75472					
67100100	MOBILIZATION	L SUM	1	1					
70106800	CHANGEABLE MESSAGE SIGN	CAL MO	54	54					
70300520	PAVEMENT MARKING TAPE, TYPE III 4"	FOOT	237148	237148					
70300530	PAVEMENT MARKING TAPE, TYPE III 5"	FOOT	29036	29036					
70300550	PAVEMENT MARKING TAPE, TYPE III 8"	FOOT	36160	36160					
70300560	PAVEMENT MARKING TAPE, TYPE III 12"	FOOT	2357	2357					
70301000	WORK ZONE PAVEMENT MARKING REMOVAL	SQ FT	84411	84411					
70400100	TEMPORARY CONCRETE BARRIER	FOOT	43852	43852					
72000100	SIGN PANEL - TYPE 1	SQ FT	17					17	
72000200	SIGN PANEL - TYPE 2	SQ FT	383					383	
72000300	SIGN PANEL - TYPE 3 (SEE NOTE)	SQ FT	2503					2503	
72400100	REMOVE SIGN PANEL ASSEMBLY - TYPE A	EACH	9					9	
72400200	REMOVE SIGN PANEL ASSEMBLY - TYPE B	EACH	33					33	
72400330	REMOVE SIGN PANEL - TYPE 3	SQ FT	2018					2018	
72400600	RELOCATE SIGN PANEL ASSEMBLY - TYPE B	EACH	1					1	
72600100	MILE POST MARKER ASSEMBLY	EACH	5					5	
72700100	STRUCTURAL STEEL SIGN SUPPORT - BREAKAWAY	POUND	257					257	
73000100	WOOD SIGN SUPPORT	FOOT	786					786	
73400100	CONCRETE FOUNDATIONS	CU YD	1.4					1.4	
73700100	REMOVE GROUND-MOUNTED SIGN SUPPORT	EACH	2					2	
73700200	REMOVE CONCRETE FOUNDATION - GROUND MOUNT	EACH	2					2	
78000200	THERMOPLASTIC PAVEMENT MARKING - LINE 4"	FOOT	77,547	77,547					

100% STATE URBAN

NOTE:
TYPE 3 SIGN PANELS WHICH REQUIRE TYPE ZZ SHEETING WILL BE 100% PAID FOR BY STATE FUNDS. THE REST WILL BE PAID FOR BY 90% FEDERAL FUNDS AND 10% STATE FUNDS. A QUANTITY OF 1091 SQ FT OF ITEM NO. 72000300, SIGN PANEL - TYPE 3 REQUIRES TYPE ZZ RETROREFLECTIVE SHEETING.

* SPECIALTY ITEMS
URBAN, 90% FEDERAL, 10% STATE (SEE NOTE)

REVISIONS	
NAME	DATE

ILLINOIS DEPARTMENT OF TRANSPORTATION
FAI ROUTE 55 (I-80 TO BLACK ROAD)
WIDENING AND RESURFACING

SUMMARY OF QUANTITIES III

SCALE: N.T.S. DRAWN BY AG
DATE 03/22/07 CHECKED BY DDH

TENG
TENGS & ASSOCIATES, INC.
ENGINEERS/ARCHITECTS/PLANNERS
CHICAGO, ILLINOIS

Rev. 5-31-07

PLOT DATE: 03/22/07
FILE NAME: S:\06014001.DWG
USER: MUSERN
3-21-2007 10:18:05
S:\DOCUMENT\02381501\CIVIL\DWG\50621A003.DWG

F.A.I. RTE.	SECTION	COUNTY	TOTAL SHEETS	SHEET NO.
55	99 (1&2) WRS	WILL	334	7
STA.		TO STA.		
FED. ROAD DIST. NO.		ILLINOIS	FED. AID PROJECT	

100% STATE URBAN

CODE NO.	ITEM	UNIT	TOTAL QUANTITY	ROADWAY	PROP IL 59	EXIST IL 59	US 52	SIGNING	LIGHTING
78000500	THERMOPLASTIC PAVEMENT MARKING - LINE 8"	FOOT	22325	1000-2A	099-4642	099-0030	099-0139	Y002-1C	Y030-1E
78000600	THERMOPLASTIC PAVEMENT MARKING - LINE 12"	FOOT	4246	22325	X271-2A	SFTY-2A	SFTY-2A		
78003110	PREFORMED PLASTIC PAVEMENT MARKING, TYPE B - LINE 4"	FOOT	467	467					
78003120	PREFORMED PLASTIC PAVEMENT MARKING, TYPE B - LINE 5"	FOOT	22081	22081					
78005110	EPOXY PAVEMENT MARKING - LINE 4"	FOOT	53266	53266					
78005120	EPOXY PAVEMENT MARKING - LINE 5"	FOOT	34599	34599					
78005140	EPOXY PAVEMENT MARKING - LINE 8"	FOOT	2502	2502					
78005150	EPOXY PAVEMENT MARKING - LINE 12"	FOOT	3135	3135					
78008210	POLYUREA PAVEMENT MARKING TYPE I - LINE 4"	FOOT	14955	14955					
78008220	POLYUREA PAVEMENT MARKING TYPE I - LINE 5"	FOOT	2488	2488					
78100100	RAISED REFLECTIVE PAVEMENT MARKER	EACH	2567	2567					
78100300	REPLACEMENT REFLECTOR	EACH	2474	2474					
78200100	MONODIRECTIONAL PRISMATIC BARRIER REFLECTOR	EACH	8639	8639					
78200410	GUARDRAIL MARKERS, TYPE A	EACH	22	22					
78200530	BARRIER WALL MARKERS, TYPE C	EACH	526	526					
78201000	TERMINAL MARKER - DIRECT APPLIED	EACH	4	4					
78300100	PAVEMENT MARKING REMOVAL	SQ FT	31262	31262					
78300200	RAISED REFLECTIVE PAVEMENT MARKER REMOVAL	EACH	1081	1081					
81900200	TRENCH AND BACKFILL FOR ELECTRICAL WORK	FOOT	1635						1635
82102400	LUMINAIRE, SODIUM VAPOR, HORIZONTAL MOUNT, 400 WATT	EACH	1						1
83050810	LIGHT POLE, ALUMINUM, 47.5 FT. M.H., 15 FT. MAST ARM	EACH	1						1
83600200	LIGHT POLE FOUNDATION, 24" DIAMETER	FOOT	66.5						66.5
83800505	BREAKAWAY DEVICE, COUPLING, WITH ALUMINUM SKIRT	EACH	4						4
84200800	POLE FOUNDATION, REMOVED	EACH	6						6
84400105	RELOCATE EXISTING LIGHTING UNIT	EACH	6						6
X0322256	TEMPORARY INFORMATION SIGNING	SQ FT	1126	1126					
X0322323	WEED CONTROL, TEASEL	GALLON	2.5	2.5					
X0322729	MATERIAL TRANSFER DEVICE	TON	47610	47610					
X0322936	REMOVE EXISTING FLARED END SECTION	EACH	20	20					
X0323426	SEDIMENT CONTROL, DRAINAGE STRUCTURE INLET FILTER CLEANING	EACH	272	272					
X0323574	MAINTENANCE OF LIGHTING SYSTEM	CAL MO	15	15					
X0323879	SERVICE PATROL	CAL DA	330	330					
X0323973	SEDIMENT CONTROL, SILT FENCE	FOOT	2268	2268					
X0323974	SEDIMENT CONTROL, SILT FENCE MAINTENANCE	FOOT	1973	1973					
X0323988	TEMPORARY SOIL RETENTION SYSTEM	SQ FT	382	382					
X0324045	SEDIMENT CONTROL, STABILIZED CONSTRUCTION ENTRANCE REMOVAL	EACH	8	8					
X0324685	TEST STRIP (STONE MATRIX ASPHALT)	EACH	2	2					
X0324774	SEDIMENT CONTROL, STABILIZED CONSTRUCTION ENTRANCE	SQ YD	1864	1864					
X0324775	SEDIMENT CONTROL, STABILIZED CONSTRUCTION ENTRANCE MAINTENANCE	SQ YD	1864	1864					
X0484300	MEDIAN INLET BOX REMOVAL	EACH	8	8					
X4066580	POLYMERIZED HOT-MIX ASPHALT SURFACE COURSE, STONE MATRIX ASPHALT, N80	TON	25991	25991					
X4066685	POLYMERIZED HOT-MIX ASPHALT BINDER COURSE, STONE MATRIX ASPHALT, N80	TON	21619	21619					
X6370920	CONCRETE BARRIER, SINGLE FACE, 42 INCH HEIGHT	FOOT	519	519					
X6370940	CONCRETE BARRIER, DOUBLE FACE, 42 INCH HEIGHT	FOOT	19259	19259					
X7011015	TRAFFIC CONTROL AND PROTECTION (EXPRESSWAYS)	L SUM	1	1					
X7013820	TRAFFIC CONTROL SURVEILLANCE, EXPRESSWAYS	CAL DA	330	330					

PLOT DATE = #DATE#
 FILE NAME = #FILES#
 PLOT SCALE = #SCALE#
 USER NAME = #USER#
 S:\DOCUMENT\02361621\CIVIL\CON\SD261621\004.dwg
 3-21-2007 15:15:16

* SPECIALTY ITEMS
 URBAN, 90% FEDERAL, 10% STATE

REVISIONS	
NAME	DATE

ILLINOIS DEPARTMENT OF TRANSPORTATION
 FAI ROUTE 55 (I-80 TO BLACK ROAD)
 WIDENING AND RESURFACING

SUMMARY OF QUANTITIES
 IV

SCALE: N.T.S. DRAWN BY AG
 DATE 03/22/07 CHECKED BY DDH

TENG TENG & ASSOCIATES, INC.
 ENGINEERS/ARCHITECTS/PLANNERS
 CHICAGO, ILLINOIS

Rev. 5-31-07

F.A.I. RTE.	SECTION	COUNTY	TOTAL SHEETS	SHEET NO.
55	99 (I&I) WRS	WILL	334	8
STA.		TO STA.		
FED. ROAD DIST. NO.	ILLINOIS	FED. AID PROJECT		

CODE NO.	ITEM	UNIT	TOTAL QUANTITY		PROP IL 59	EXIST IL 59	US 52	SIGNING	LIGHTING
			I000-2A	X271-2A					
XX002870	AGGREGATE SHOULDERS, TYPE B (SPECIAL)	SQ YD	11102	11102					
XX003988	TEMPORARY CONCRETE BARRIER REMOVAL	FOOT	268	268					
XX005472	DRAINAGE STRUCTURE SPECIAL	EACH	4	4					
Z0001050	AGGREGATE SUBGRADE 12"	SQ YD	99436	99436					
Z0013798	CONSTRUCTION LAYOUT	L SUM	1	1					
Z0018500	DRAINAGE STRUCTURES TO BE CLEANED	EACH	5	5					
Z0030150	IMPACT ATTENUATORS (NON-REDIRECTIVE), TEST LEVEL 3	EACH	1	1					
Z0030260	IMPACT ATTENUATORS, TEMPORARY (FULLY REDIRECTIVE, NARROW), TEST LEVEL 3	EACH	9	9					
Z0030330	IMPACT ATTENUATORS, RELOCATE (FULLY REDIRECTIVE), TEST LEVEL 3	EACH	6	6					
Z0056220	SAND MODULE IMPACT ATTENUATOR TO BE REMOVED	EACH	4	4					
Z0068400	STEEL CASINGS 42"	FOOT	40	40					
Z0076600	TRAINEES	HOUR	4000	4000					
35501288	HOT-MIX ASPHALT BASE COURSE, 2 1/2"	SQ YD	89656	89656					
X0325733	TEMPORARY ASPHALT WEDGE	SQ YD	2147	2147					
X0325741	REINFORCED CONCRETE PIPE ELBOW, SPAN 30 RISE 19	EACH	4	4					
X006937	GROUND ROD, 5/8" DIA. X 10 FT.	EACH	7					7	
X0325740	UNIT DUCT, 600V, 3-1/C NO. 2, 1/C NO. 4 GROUND, (EPR-TYPE RHW), 1 1/2" DIA. POLYETHYLENE	FOOT	1635					1635	
X4421000	PARTIAL DEPTH PATCHING	TON	109	109					
X4422025	PARTIAL DEPTH REMOVAL 2"	SQ YD	970	970					

100% STATE URBAN

▲

▲

① Y080
SPECIALTY ITEMS
URBAN, 90% FEDERAL, 10% STATE

PLOT DATE = 04/15/07
 PLOT SCALE = AS SHOWN
 USER NAME = RUSERS
 \S:\BIDDING\2006\62895\DRAWING\62895-08.DWG
 5/21/2007 15:18:22
 GARCIAZ

REVISIONS	
NAME	DATE

ILLINOIS DEPARTMENT OF TRANSPORTATION
 FAI ROUTE 55 (I-80 TO BLACK ROAD)
 WIDENING AND RESURFACING

SUMMARY OF QUANTITIES
 V

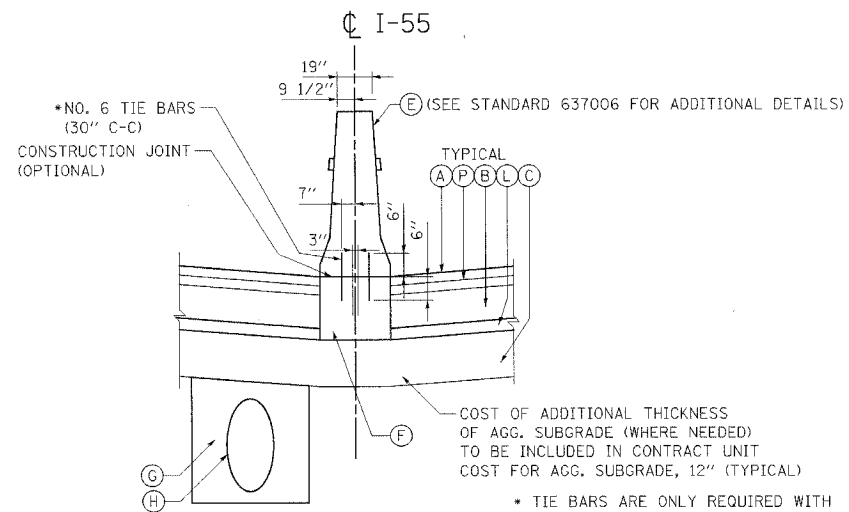
SCALE: N.T.S. DRAWN BY AG
 DATE 03/22/07 CHECKED BY DDH

TENG
 TENG & ASSOCIATES, INC.
 ENGINEERS/ARCHITECTS/PLANNERS
 CHICAGO, ILLINOIS

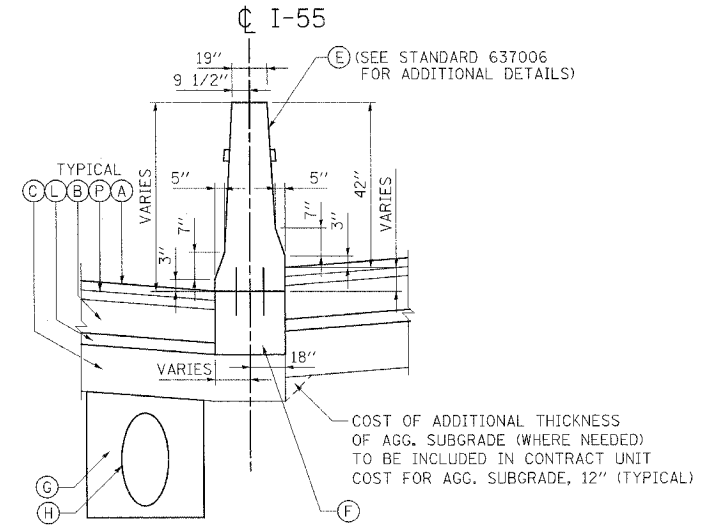
Rev. 5-31-07

Rev.

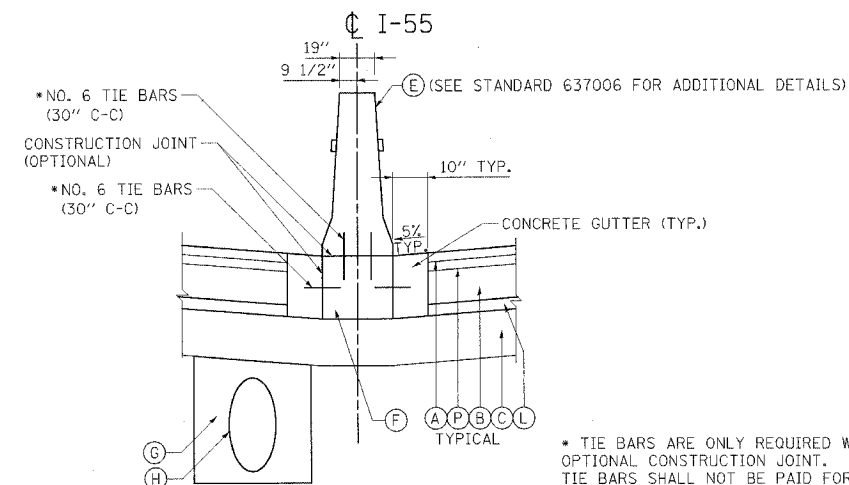
F.A.I. RTE.	SECTION	COUNTY	TOTAL SHEETS	SHEET NO.
55	99 (1&2) WRS	WILL	334	15
STA.	TO STA.			
FED. ROAD DIST. NO.	ILLINOIS	FED. AID PROJECT		



MEDIAN DETAIL A
TYPICAL CONCRETE BARRIER AND BASE



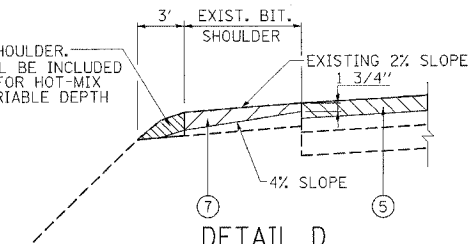
MEDIAN DETAIL C
VARIABLE HEIGHT



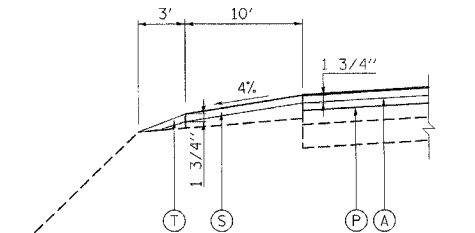
MEDIAN DETAIL B
MEDIAN BARRIER W/ CONCRETE GUTTER

STA. 213+81.02 TO STA. 216+31.60 (SOUTHBOUND)
 STA. 216+37.60 TO STA. 249+74.00 (MAINLINE SB & NB)
 STA. 272+50.00 TO STA. 305+15.00 (MAINLINE SB & NB)
 STA. 330+25.00 TO STA. 402+65.07 (MAINLINE SB & NB)

REMOVE EXISTING AGGREGATE SHOULDER. THE COST FOR THIS WORK SHALL BE INCLUDED IN THE CONTRACT UNIT PRICE FOR HOT-MIX ASPHALT SURFACE REMOVAL, VARIABLE DEPTH

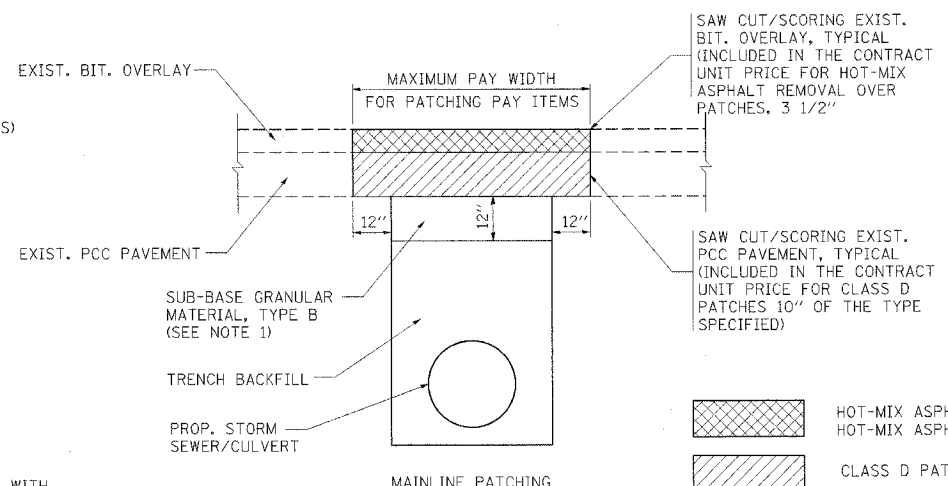


DETAIL D



DETAIL E

SAW CUT/SCORING EXIST. BIT. SHOULDER, TYPICAL (INCLUDED IN THE CONTRACT UNIT PRICE FOR CLASS D PATCHES 10" OF THE TYPE SPECIFIED)



PAVEMENT PATCHING FOR STORM SEWER LATERAL OUTLETS

NOTES:

1. SUB-BASE GRANULAR MATERIAL, TYPE B SHALL BE CONSTRUCTED IN ACCORDANCE WITH ARTICLES 311.02, 311.03, AND 311.05 OF THE STANDARD SPECIFICATIONS. THIS WORK WILL BE MEASURED AND PAID FOR AS TRENCH BACKFILL IN ACCORDANCE WITH ARTICLES 208.03 AND 208.04 OF THE STANDARD SPECIFICATIONS.

EXISTING LEGEND

- 1 P.C.C. PAVEMENT, 10"
- 2 BITUMINOUS RESURFACING 7"
- 3 BITUMINOUS SHOULDER 10"
- 4 AGGREGATE SHOULDER
- 5 HOT-MIX ASPHALT SURFACE REMOVAL, 3 1/2"
- 6 NOT USED
- 7 HOT-MIX ASPHALT SURFACE REMOVAL, VARIABLE DEPTH
- 8 POLYMERIZED BITUMINOUS CONCRETE SURFACE COURSE, SUPERPAVE, IL-19, N90 2"
- 9 BITUMINOUS CONCRETE BINDER COURSE, SUPERPAVE, IL-19, N90, 15"
- 10 BITUMINOUS SHOULDERS, SUPERPAVE, 17"
- 11 STABILIZED SUB-BASE 4"
- 12 PIPE UNDERDRAINS 6"
- 13 AGGREGATE SUBGRADE 12"
- 14 NOT USED
- 15 BITUMINOUS SHOULDER
- 16 SPBGR (SEE PLANS FOR LOCATIONS)

PROPOSED LEGEND

- A POLYMERIZED HOT-MIX ASPHALT SURFACE COURSE, STONE MATRIX ASPHALT, N80; 1 3/4"
- B HOT-MIX ASPHALT BASE COURSE, 8"
- C AGGREGATE SUBGRADE, 12"
- D EMBANKMENT
- E CONCRETE BARRIER, DOUBLE FACE, 42" HEIGHT
- F BARRIER BASE
- G TRENCH BACKFILL
- H STORM SEWER
- I STRIP REFLECTIVE CRACK CONTROL TREATMENT
- J TOPSOIL FURNISH AND PLACE, 6"

APPLICATION (SEE TYP. SECTIONS)	MIXTURE TYPE	AC TYPE	AIR VOIDS
I-55 MAINLINE, EXIST. LANES & INSIDE SHOULDER	POLYMERIZED HOT-MIX ASPHALT SURFACE COURSE, STONE MATRIX ASPHALT	SBS/SBR PG 76-28/22	4% @ N80
I-55 MAINLINE, EXIST. LANES & INSIDE SHOULDER	POLYMERIZED HOT-MIX ASPHALT BINDER COURSE, STONE MATRIX ASPHALT	SBS/SBR PG 76-28/22	4% @ N80
I-55 MAINLINE, NEW INSIDE LANES & SHOULDER	HOT-MIX ASPHALT BASE COURSE (HMA BINDER IL-19.0, MIN. LIFT 2 1/4"); 8"	PG 64-22	4% @ N90
I-55 MAINLINE, NEW INSIDE LANES & SHOULDER (BOTTOM LIFT)	HOT-MIX ASPHALT BASE COURSE (HMA BINDER IL-19.0); 2 1/2"	PG 58-22	4% @ N50
I-55 MAINLINE, EXIST. LANES & FRONTAGE ROADS OVER SEWER LATERALS	CLASS D PATCHES 10" (HMA BINDER IL-25)	PG 64-22	4% @ N105
I-55 MAINLINE, EXIST. LANES	HOT-MIX ASPHALT REPLACEMENT OVER PATCHES (HMA BINDER IL-25)	PG 64-22	4% @ N105
I-55 MAINLINE, EXIST. OUTSIDE SHLD; A.I.S.; TEMPORARY ASPHALT WEDGE;	HOT-MIX ASPHALT SURFACE COURSE, MIX "D", N 70 (IL 9.5 mm)	PG 64-22	4% @ N70
ACCIDENT INVESTIGATION SITES (A.I.S.)	HOT-MIX ASPHALT BASE COURSE (HMA BINDER IL-19); 11 1/2"	PG 64-22 *	4% @ N70

NOTES:

- 1) THE UNIT WEIGHT USED TO CALCULATE THE PLAN QUANTITY FOR STONE MATRIX ASPHALT SURFACE COURSE IS 135 LBS/SQ YD/INCH THICKNESS.
- 2) THE UNIT WEIGHT USED TO CALCULATE ALL HOT-MIX ASPHALT SURFACE MIXTURE QUANTITIES IS 112 LBS/SQ YD/INCH THICKNESS.
- * 3) WHEN RAP EXCEEDS 20%, THE NEW ASPHALT BINDER IN THE MIX SHALL BE PG 58-22.

REVISIONS	
NAME	DATE
DDH	5/15/07

ILLINOIS DEPARTMENT OF TRANSPORTATION
 I-80 TO BLACK ROAD
 WIDENING AND RESURFACING

**TYPICAL SECTIONS
 DETAILS AND BITUMINOUS
 MIXTURE REQUIREMENTS**

SCALE: N.T.S. DRAWN BY JFS
 DATE 05/15/07 CHECKED BY DDH

TENG
 TENG & ASSOCIATES, INC.
 ENGINEERS/ARCHITECTS/PLANNERS
 CHICAGO, ILLINOIS

PLOT DATE = 5/15/07
 PLOT SCALE = 1/8" = 1'-0"
 USER NAME = JFS
 5:\DOCUMENTS\PROJECTS\62895\62895R15.DWG
 5:\DOCUMENTS\PROJECTS\62895\62895R15.DWG

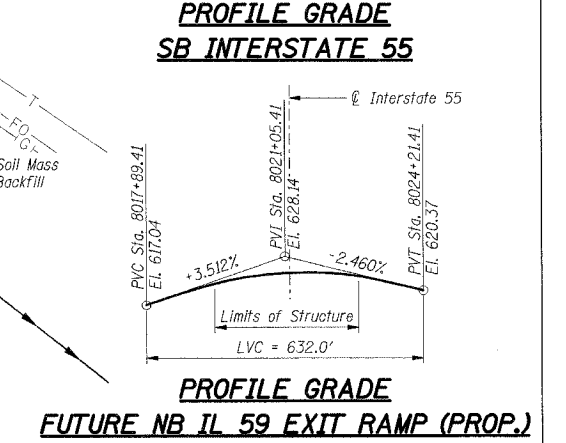
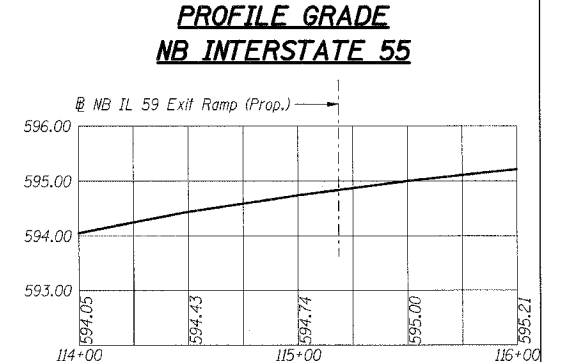
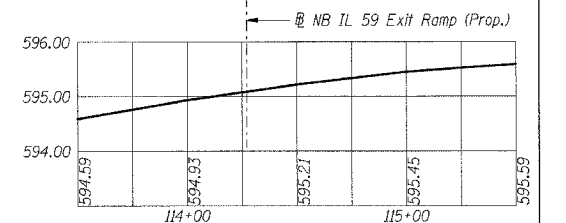
F.A.I. RTE.	SECTION	COUNTY	TOTAL SHEETS	SHEET NO.
55	99 (I&2) WRS	WILL	334	257
STA.	TO STA.			
FED. ROAD DIST. NO.	ILLINOIS	FED. AID PROJECT		

DESIGN SPECIFICATIONS:
1996 AASHTO Standard Specifications for Highway Bridges
1997 thru 2002 Interim Specifications.

DESIGN LOADING:
Roadway Live Load: HS 20-44
Future Wearing Surface = 50 psi

DESIGN STRESSES:
Concrete, f'c = 3,500 psi
Reinforcement, fy = 60,000 psi
Structural Steel, fy = 50,000 psi (M 270 Grade 50)

SEISMIC DATA:
Seismic Performance Category (SPC) = A
Bedrock Acceleration Coefficient (A) = 0.04g
Site Coefficient (S) = 1.0



BENCHMARK:
TBM#1 Top of a large nail set in the east face of power pole on west side of West Frontage Rd. near Interstate 55 Sta. 115+00. El. 595.91 (NGVD 29 Vertical Datum)

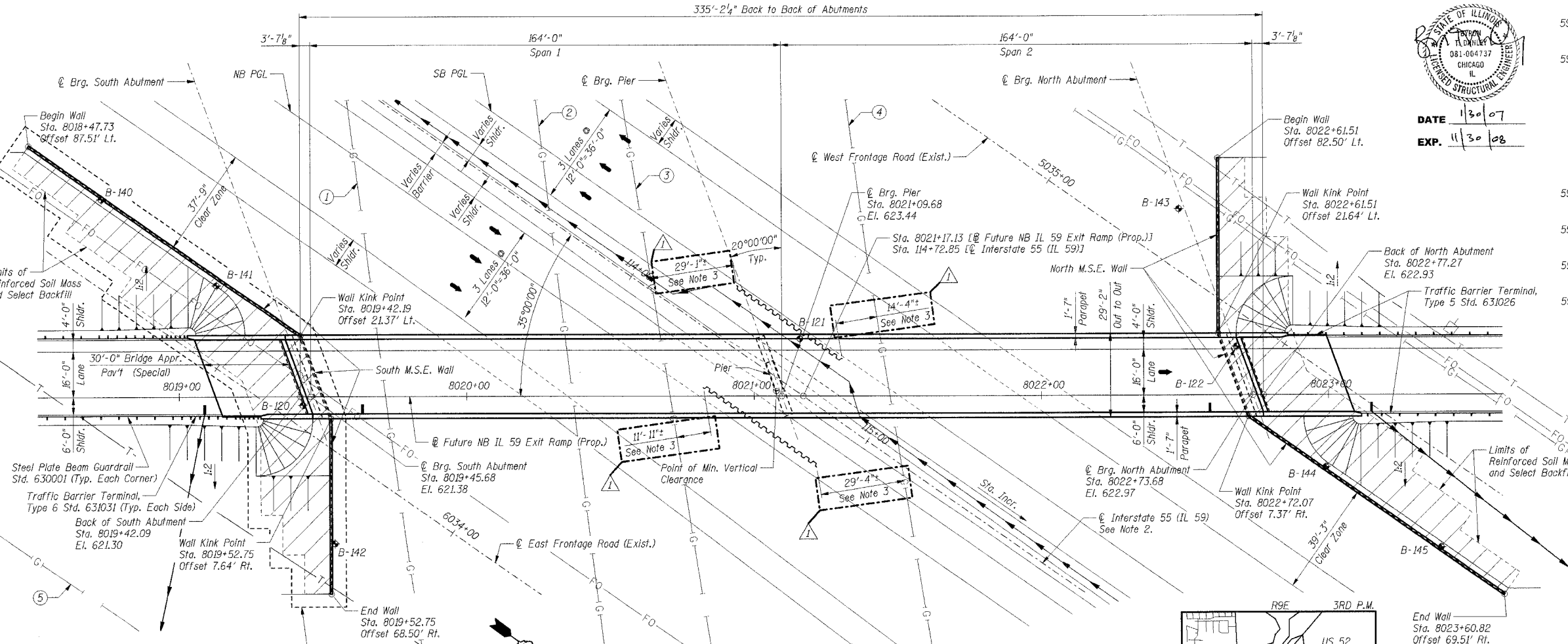
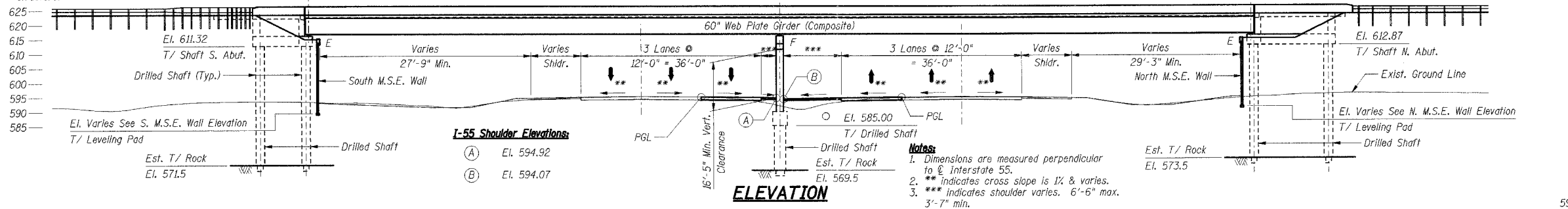
SALVAGE:
None.

STAGING:
Traffic will be maintained on existing NB IL 59 Exit Ramp Bridge (S.N. 099-0030).

EXISTING STRUCTURE:
S.N. 099-0030 Four span, 269'-8" back to back of abutments, continuous steel multi-beam bridge on multi-column concrete piers and open abutments. 26' between barriers. Existing structure is approximately 2500' north of proposed structure.

ELEVATIONS SHOWN ON SHEETS 257 THRU 262 ARE BASED ON NGVD 29 VERTICAL DATUM, WHILE ALL OTHER CONTRACT 62895 ELEVATIONS ARE BASED ON NAVD 88 VERTICAL DATUM. ELEVATIONS SHOWN ON SHEETS 257 THRU 262 MUST BE CONVERTED TO NAVD 88 VERTICAL DATUM BY SUBTRACTING 0.31 FEET FROM ELEVATIONS DENOTED.

FOR EXAMPLE:
ON SHT. 257 [E BRG. PIER, STA. 8021+09.68, EL. 623.44 (NGVD 29)]
CONVERT: EL. 623.44 (NGVD 29)
- 0.31
EL. 623.13 (NAVD 88)
USE EL. 623.13



KINDER MORGAN GAS PIPELINES
(See Note 3)

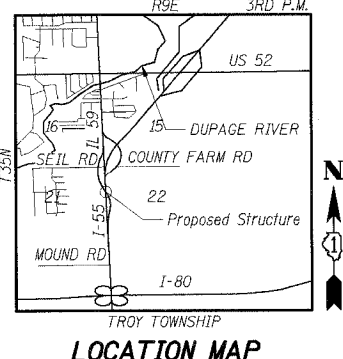
ID	DESIGNATION	DIAMETER
①	GC #1	30"
②	AM #4	36" w/ 42" casing under roadway
③	AM #2	24"
④	GC #3	36"
⑤	GC #2	36"

Notes:

- Center pier shall be constructed under this contract. Abutments, superstructure, approach embankments, bridge approach pavements and guardrails will be constructed by others under a separate future contract.
- Center pier shall be constructed based on alignment defined as @ Future NB IL 59 Exit Ramp (Prop.). For alignment sketch and control points, see Sht. 2 of 6.
- Kinder Morgan gas pipeline locations indicated are based on SUE investigation of underground utilities data shown on Sheet 203.

LEGEND

- B-0 Soil Boring Location
- T- Telephone Line
- G- Gas Line
- FO- Fiber Optic Line
- E- Electrical Pole
- S- Storm Sewer
- I- Drainage Scupper or Inlet
- R- Temporary Soil Retention System



STATE OF ILLINOIS
Professional Engineer
No. 081-004737
CHICAGO, ILL.
DATE 11/30/07
EXP. 11/30/08

SHT. 1 OF 6

REVISIONS	NAME	DATE
1	MDB	05/22/07

ILLINOIS DEPARTMENT OF TRANSPORTATION
FAI ROUTE 55 (I-80 TO BLACK ROAD)
WIDENING AND RESURFACING
IL ROUTE 59 OVER I-55, S.N. 099-4642
STA. 8021+17.13, SECTION 26HB-1BR & 114R-1
WILL COUNTY

GENERAL PLAN & ELEVATION

SCALE: DATE 05/15/07 DRAWN BY TMH CHECKED BY MJK

TENG
TENGG & ASSOCIATES, INC.
ENGINEERS/ARCHITECTS/PLANNERS
CHICAGO, ILLINOIS

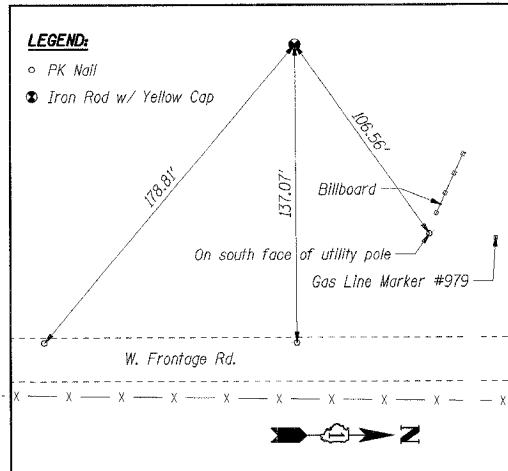
F.A.I. RTE.	SECTION	COUNTY	TOTAL SHEETS	SHEET NO.
55	99 (I&2) WRS	WILL	334	258
STA. TO STA.				
FED. ROAD DIST. NO.			ILLINOIS FED. AID PROJECT	

GENERAL NOTES

1. Reinforcement Bars shall conform to the requirements of ASTM A 706 Gr 60 (IL Modified). See Special Provisions.
2. Reinforcement bars designated (E) shall be epoxy coated.
3. Bearing seat surfaces shall be constructed or adjusted to the designated elevations within a tolerance of 1/8 inch. Adjustment shall be made by grinding the surface.
4. Concrete Sealer shall be applied to the designated areas of the pier.

INDEX OF SHEETS

- 1 GENERAL PLAN AND ELEVATION
- 2 GENERAL NOTES, INDEX OF SHEETS; AND TOTAL BILL OF MATERIAL
- 3 SUBSTRUCTURE LAYOUT; DRILLED SHAFT DETAILS AND SCHEDULE
- 4 PIER
- 5 SOIL BORING LOGS 1
- 6 SOIL BORING LOGS 2



BILL OF MATERIAL - S.N. 099-4642

Item	Unit	Sub	Super	Total
Structure Excavation	Cu Yd	58	-	58
Concrete Structures	Cu Yd	60.2	-	60.2
Reinforcement Bars	Lbs	7,110	-	7,110
Reinforcement Bars, Epoxy Coated	Lbs	18,720	-	18,720
Temporary Soil Retention System	Sq Ft	382	-	382
Name Plates	Each	1	-	1
Drilled Shaft in Soil	Cu Yd	27.3	-	27.3
Drilled Shaft in Rock	Cu Yd	3.0	-	3.0
Concrete Sealer	Sq Ft	1,028	-	1,028

ALIGNMENT CONTROL POINT - STA. 8025+45.64

At Sta. 274+12.62, 245.34' Lt. [I-55]

Future NB IL 59 Exit Ramp (Prop.) Alignment Control Points

(See Note 2)

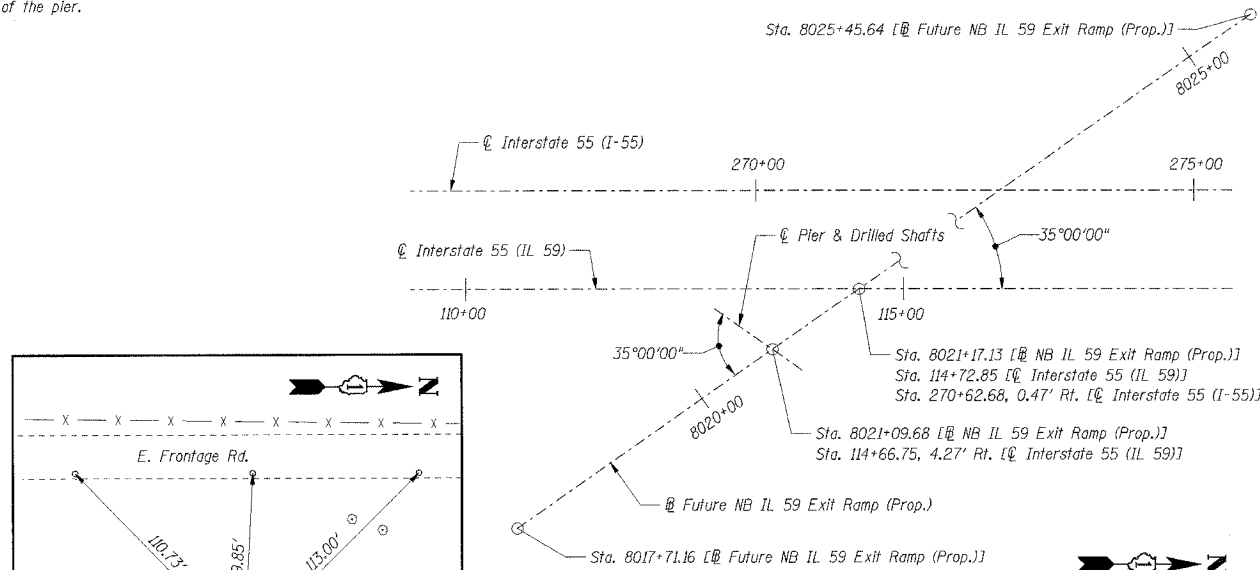
Alignment	Station	Offset	Northing	Easting
Future NB IL 59 Exit Ramp (Prop.)	8017+71.16	0.00	1761260.12	1021501.93
Future NB IL 59 Exit Ramp (Prop.)	8025+45.64	0.00	1761880.44	1021038.37

Notes:

1. Interstate 55 Stations shown on Sheets 257 thru 262 are based on the alignment defined on this sheet and denoted as I-55, while all other Contract 62895 Interstate 55 stations are based on the alignment defined on sheets 34 thru 42 and denoted as I-55 (I-55) on this sheet.
2. Northings and Eastings indicated are based on the horizontal control system for this contract (Contract 62895).

ELEVATIONS SHOWN ON SHEETS 257 THRU 262 ARE BASED ON NGVD 29 VERTICAL DATUM, WHILE ALL OTHER CONTRACT 62895 ELEVATIONS ARE BASED ON NAVD 88 VERTICAL DATUM. ELEVATIONS SHOWN ON SHEETS 257 THRU 262 MUST BE CONVERTED TO NAVD 88 VERTICAL DATUM BY SUBTRACTING 0.31 FEET FROM ELEVATIONS DENOTED.

FOR EXAMPLE:
 ON SHT. 257 [I-55] BRG. PIER, STA. 8021+09.68, EL. 623.44 (NGVD 29)
 CONVERT: EL. 623.44 (NGVD 29)
 - 0.31
 EL. 623.13 (NAVD 88)
 USE EL. 623.13

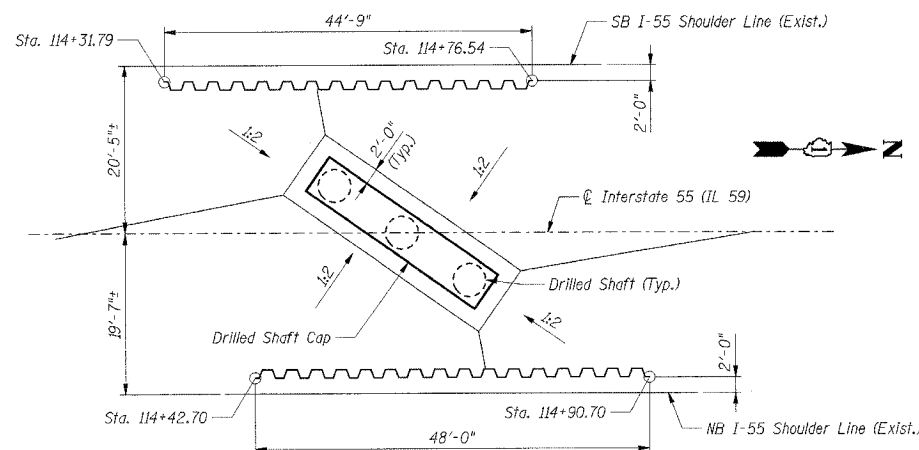


I-55 (IL 59) ALIGNMENT SKETCH

(NOT TO SCALE)

ALIGNMENT CONTROL POINT - STA. 8017+71.16

At Sta. 267+79.31, 198.89' Rt. [I-55]

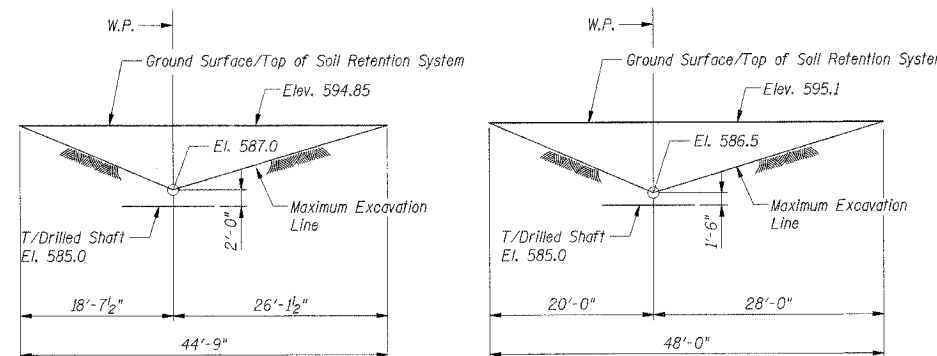


TEMPORARY SOIL RETENTION SYSTEM PLAN

See Sht. 1 of 6 for location of Kinder Morgan Gas Pipelines relative to Temporary Soil Retention System.

LEGEND:

Temporary Soil Retention System



AT SB I-55 (Looking West)

AT NB I-55 (Looking East)

TEMPORARY SOIL RETENTION SYSTEM ELEVATIONS

A cantilevered sheet piling design does not appear feasible and additional members or other retention systems may be necessary. The Contractor shall submit a temporary soil retention system design including plan details and calculations for review and acceptance by the Engineer.

STATION 114+72.85
 BUILT 20__ BY
 STATE OF ILLINOIS
 F.A.I. RT. 55 SEC. 26HB-1BR & 114R-1
 LOADING HS20
 STR. NO. 099-4642

NAME PLATE

See Std. 515001

See Sht. 4 of 6 for location.

SHT. 2 OF 6

REVISIONS	
NAME	DATE
MDB	05/22/07

ILLINOIS DEPARTMENT OF TRANSPORTATION
 FAI ROUTE 55 (I-80 TO BLACK ROAD)
 WIDENING AND RESURFACING
 IL ROUTE 59 OVER I-55, S.N. 099-4642
 STA. 8021+17.13, SECTION 26HB-1BR & 114R-1
 WILL COUNTY

GENERAL NOTES, INDEX OF SHEETS & TOTAL BILL OF MATERIAL

SCALE: DRAWN BY TMH
 DATE 05/15/07 CHECKED BY MJK

TENG

TENG & ASSOCIATES, INC.
 ENGINEERS/ARCHITECTS/PLANNERS
 CHICAGO, ILLINOIS

Revised 05/22/07, MDB

PLOT DATE = 05/15/07
 FILE NAME = 051507.DWG
 PLOT SCALE = 1/8"=1'-0"
 USER NAME = MJK