

F.A.U. RTE.	SECTION	COUNTY	TOTAL SHEETS	SHEET NO.
160B	3368 A-N	COOK	74	38
STA.	TO STA.			
FED. ROAD DIST. NO.	ILLINOIS FED. AID PROJECT			

THE FOLLOWING EXISTING TRAFFIC SIGNAL EQUIPMENT SHALL BE REMOVED BY THE CONTRACTOR, SHALL REMAIN THE PROPERTY OF THE STATE AND SHALL BE DELIVERED BY THE CONTRACTOR TO THE STATE'S TRAFFIC SIGNAL MAINTENANCE CONTRACTOR'S MAIN FACILITY AS PER THE TRAFFIC SIGNAL SPECIFICATIONS.

1 EACH CONTROLLER AND CABINET (COMPLETE)

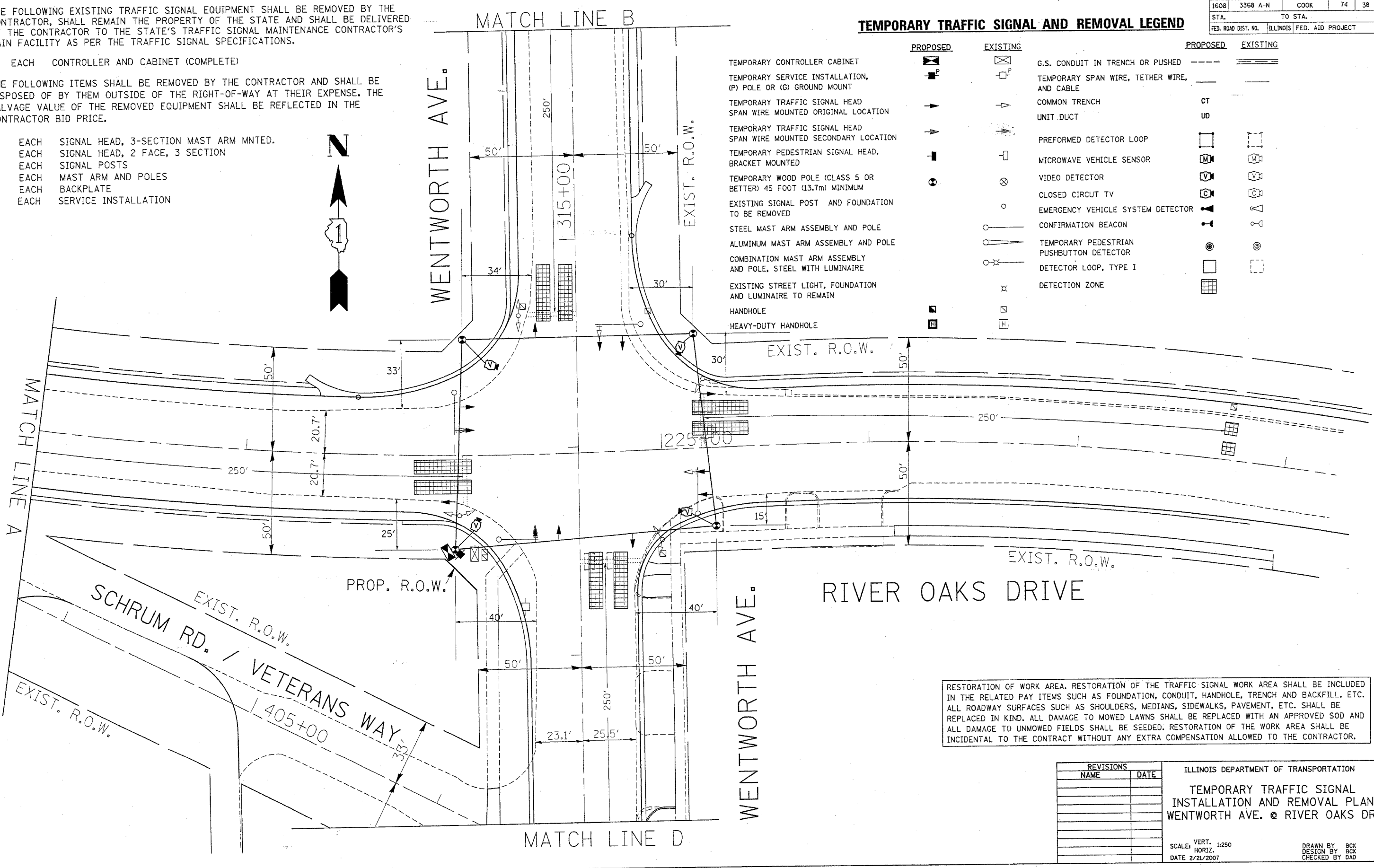
THE FOLLOWING ITEMS SHALL BE REMOVED BY THE CONTRACTOR AND SHALL BE DISPOSED OF BY THEM OUTSIDE OF THE RIGHT-OF-WAY AT THEIR EXPENSE. THE SALVAGE VALUE OF THE REMOVED EQUIPMENT SHALL BE REFLECTED IN THE CONTRACTOR BID PRICE.

- 4 EACH SIGNAL HEAD, 3-SECTION MAST ARM MNTD.
- 4 EACH SIGNAL HEAD, 2 FACE, 3 SECTION
- 4 EACH SIGNAL POSTS
- 4 EACH MAST ARM AND POLES
- 4 EACH BACKPLATE
- 1 EACH SERVICE INSTALLATION



### TEMPORARY TRAFFIC SIGNAL AND REMOVAL LEGEND

	PROPOSED	EXISTING		PROPOSED	EXISTING
TEMPORARY CONTROLLER CABINET			G.S. CONDUIT IN TRENCH OR PUSHED		
TEMPORARY SERVICE INSTALLATION, (P) POLE OR (G) GROUND MOUNT			TEMPORARY SPAN WIRE, TETHER WIRE, AND CABLE		
TEMPORARY TRAFFIC SIGNAL HEAD SPAN WIRE MOUNTED ORIGINAL LOCATION			COMMON TRENCH	CT	
TEMPORARY TRAFFIC SIGNAL HEAD SPAN WIRE MOUNTED SECONDARY LOCATION			UNIT DUCT	UD	
TEMPORARY PEDESTRIAN SIGNAL HEAD, BRACKET MOUNTED			PERFORMED DETECTOR LOOP		
TEMPORARY WOOD POLE (CLASS 5 OR BETTER) 45 FOOT (13.7m) MINIMUM			MICROWAVE VEHICLE SENSOR		
EXISTING SIGNAL POST AND FOUNDATION TO BE REMOVED			VIDEO DETECTOR		
STEEL MAST ARM ASSEMBLY AND POLE			CLOSED CIRCUIT TV		
ALUMINUM MAST ARM ASSEMBLY AND POLE			EMERGENCY VEHICLE SYSTEM DETECTOR		
COMBINATION MAST ARM ASSEMBLY AND POLE, STEEL WITH LUMINAIRE			CONFIRMATION BEACON		
EXISTING STREET LIGHT, FOUNDATION AND LUMINAIRE TO REMAIN			TEMPORARY PEDESTRIAN PUSHBUTTON DETECTOR		
HANDHOLE			DETECTOR LOOP, TYPE I		
HEAVY-DUTY HANDHOLE			DETECTION ZONE		



RESTORATION OF WORK AREA. RESTORATION OF THE TRAFFIC SIGNAL WORK AREA SHALL BE INCLUDED IN THE RELATED PAY ITEMS SUCH AS FOUNDATION, CONDUIT, HANDHOLE, TRENCH AND BACKFILL, ETC. ALL ROADWAY SURFACES SUCH AS SHOULDERS, MEDIANS, SIDEWALKS, PAVEMENT, ETC. SHALL BE REPLACED IN KIND. ALL DAMAGE TO MOWED LAWNS SHALL BE REPLACED WITH AN APPROVED SOD AND ALL DAMAGE TO UNMOWED FIELDS SHALL BE SEEDED. RESTORATION OF THE WORK AREA SHALL BE INCIDENTAL TO THE CONTRACT WITHOUT ANY EXTRA COMPENSATION ALLOWED TO THE CONTRACTOR.

REVISIONS	
NAME	DATE

ILLINOIS DEPARTMENT OF TRANSPORTATION  
**TEMPORARY TRAFFIC SIGNAL  
 INSTALLATION AND REMOVAL PLAN  
 WENTWORTH AVE. @ RIVER OAKS DR.**  
 SCALE: VERT. 1:250  
 HORIZ. DATE 2/21/2007  
 DRAWN BY BCK  
 DESIGN BY BCK  
 CHECKED BY DAD