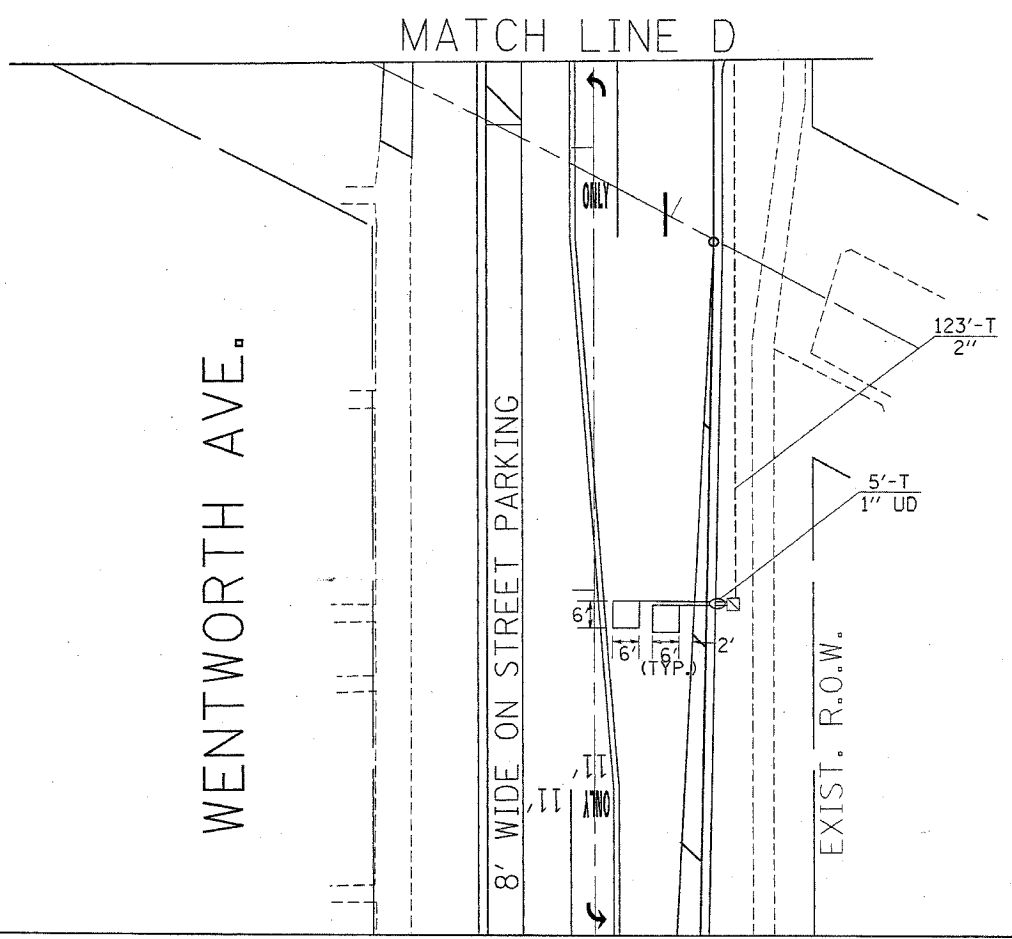
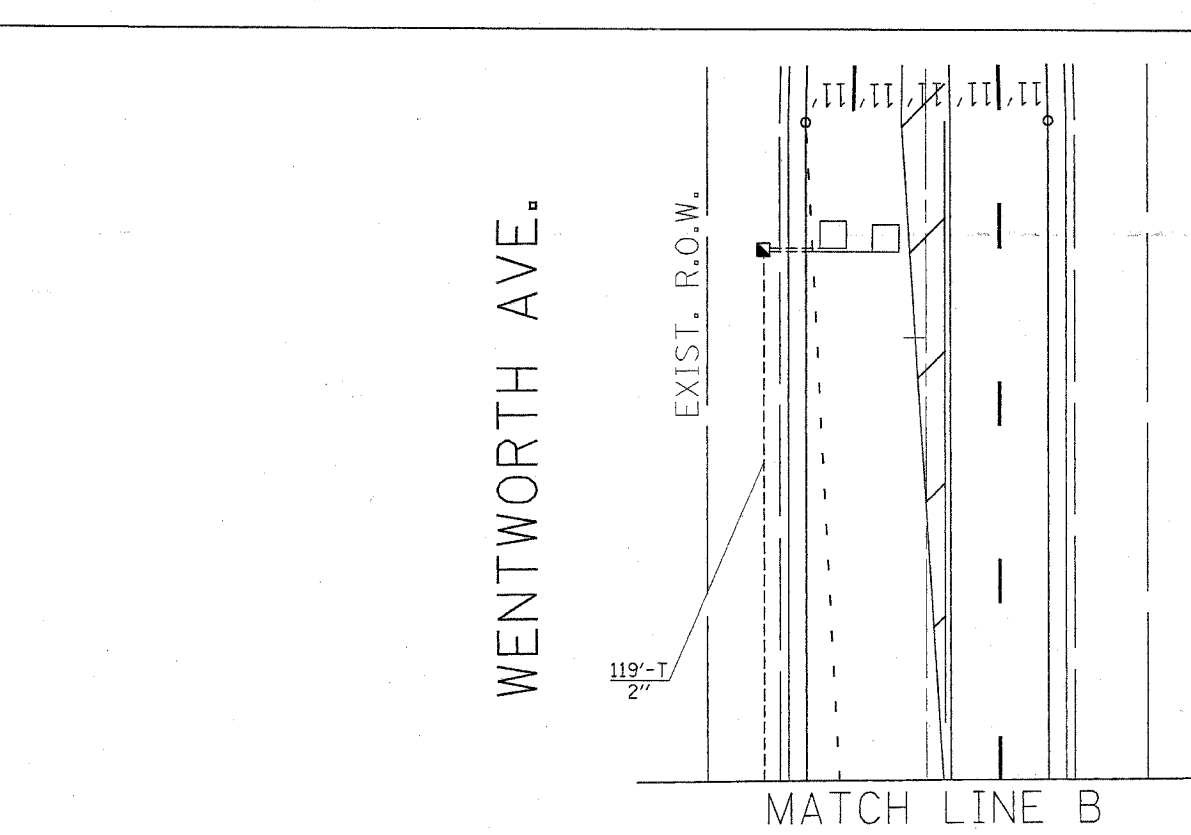
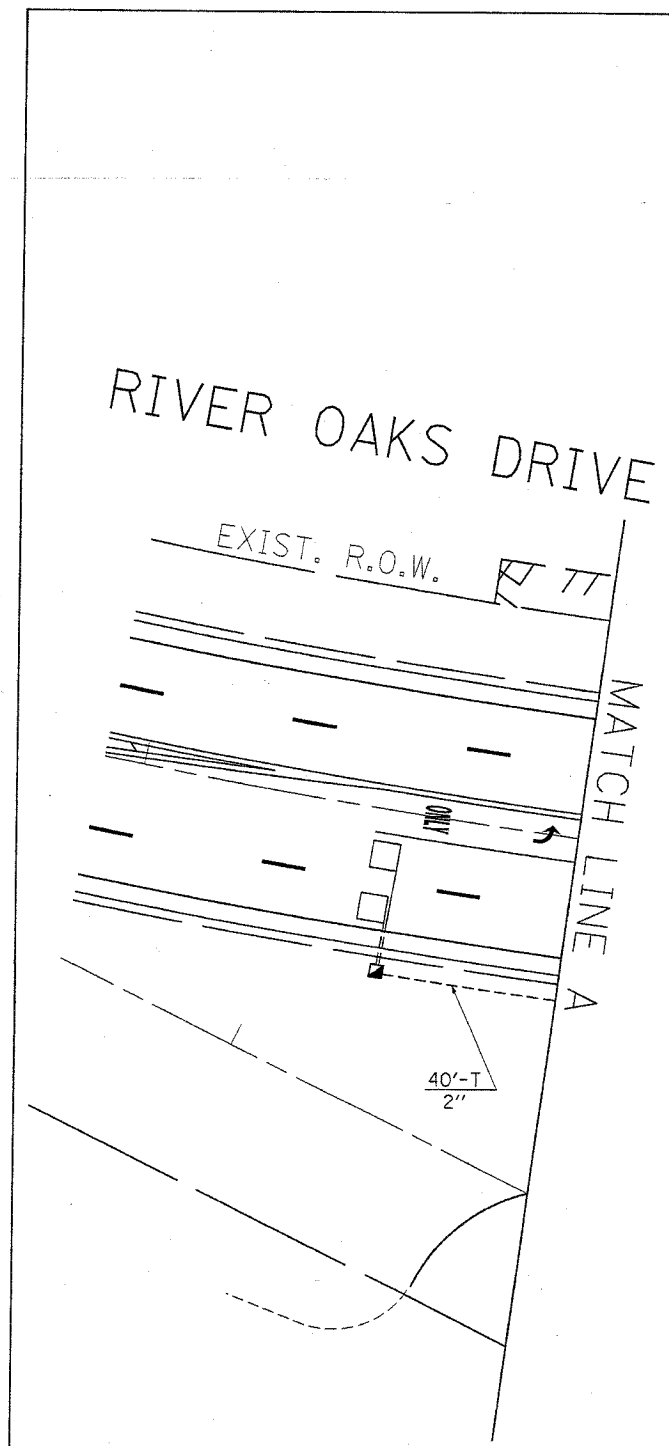


|                     |          |                  |              |           |
|---------------------|----------|------------------|--------------|-----------|
| F.A.U. RTE.         | SECTION  | COUNTY           | TOTAL SHEETS | SHEET NO. |
| 1608                | 3368 A-N | COOK             | 74           | 40        |
| STA. 1608           |          | TO STA. 1610     |              |           |
| FED. ROAD DIST. NO. | ILLINOIS | FED. AID PROJECT |              |           |



**TRAFFIC SIGNAL LEGEND**

|   | PROPOSED | EXISTING |
|---|----------|----------|
| CONTROLLER CABINET  |          |          |
| RAILROAD CONTROL CABINET                                    |          |          |
| SERVICE INSTALLATION, (P) POLE OR (G) GROUND MOUNT          |          |          |
| TELEPHONE CONNECTION  |          |          |
| SIGNAL HEAD   |          |          |
| SIGNAL HEAD WITH BACKPLATE                                  |          |          |
| SIGNAL HEAD OPTICALLY PROGRAMMED                            |          |          |
| SIGNAL HEAD PEDESTRIAN                                      |          |          |
| ILLUMINATED SIGN "NO LEFT TURN"                             |          |          |
| ILLUMINATED SIGN "NO RIGHT TURN"                            |          |          |
| SIGNAL POST   |          |          |
| WOOD POLE   |          |          |
| STEEL MAST ARM ASSEMBLY AND POLE                            |          |          |
| ALUMINUM MAST ARM ASSEMBLY AND POLE                         |          |          |
| STEEL COMBINATION MAST ARM ASSEMBLY AND POLE WITH LUMINAIRE |          |          |
| JUNCTION BOX  |          |          |
| HANDHOLE  |          |          |
| HEAVY DUTY HANDHOLE   |          |          |
| DOUBLE HANDHOLE   |          |          |
| G.S. CONDUIT IN TRENCH OR PUSHED                            |          |          |
| COMMON TRENCH   |          |          |
| UNIT DUCT   |          |          |
| PEDESTRIAN PUSHBUTTON DETECTOR                              |          |          |
| DETECTOR LOOP, TYPE I                                       |          |          |
| PERFORMED DETECTOR LOOP                                     |          |          |
| MICROWAVE VEHICLE SENSOR                                    |          |          |
| VIDEO DETECTOR  |          |          |
| CLOSED CIRCUIT TV   |          |          |
| EMERGENCY VEHICLE SYSTEM DETECTOR                           |          |          |
| CONFIRMATION BEACON   |          |          |

| REVISIONS |      |
|-----------|------|
| NAME      | DATE |
|           |      |
|           |      |
|           |      |
|           |      |
|           |      |
|           |      |
|           |      |
|           |      |
|           |      |
|           |      |

ILLINOIS DEPARTMENT OF TRANSPORTATION  
**TRAFFIC SIGNAL  
 INSTALLATION PLAN  
 WENTWORTH AVE. AND  
 RIVER OAKS DR.**  
 SCALE: VERT. 1/250  
 HORIZ. 1/250  
 DATE 2/21/2007  
 DRAWN BY BCK  
 DESIGN BY BCK  
 CHECKED BY DAD