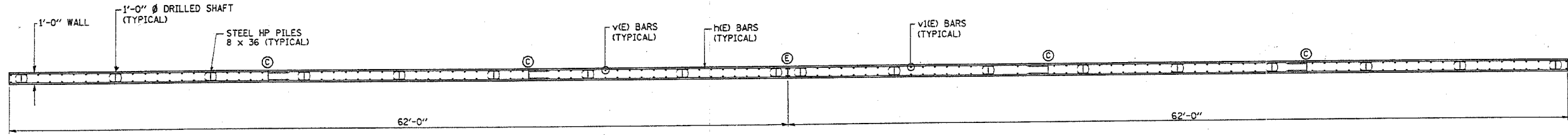
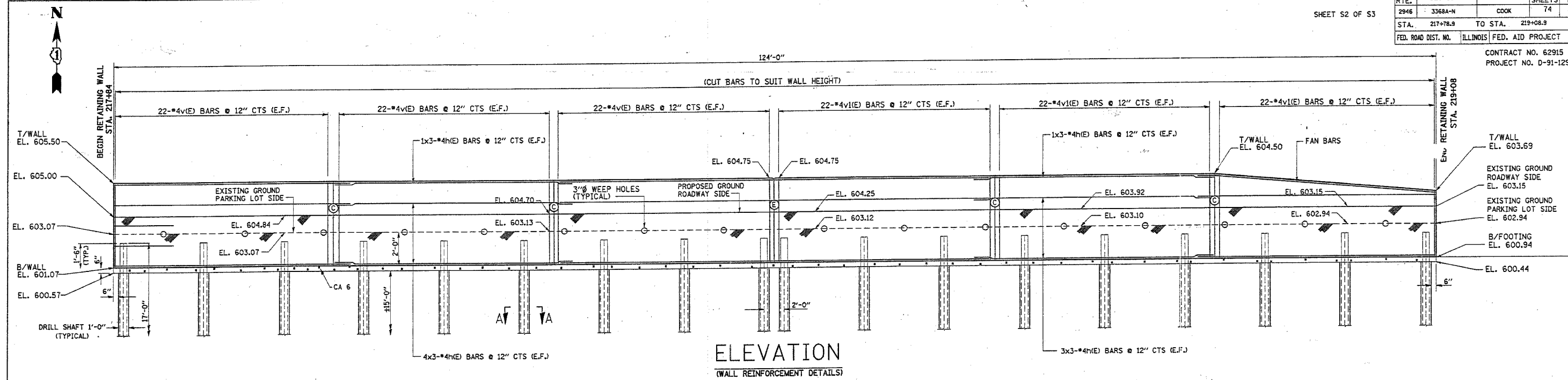


F.A.I. RTE.	SECTION	COUNTY	TOTAL SHEETS	SHEET NO.
2946	3368A-N	COOK	74	44
STA. 217+78.9	TO STA. 219+08.9			
FED. ROAD DIST. NO.	ILLINOIS	FED. AID PROJECT		

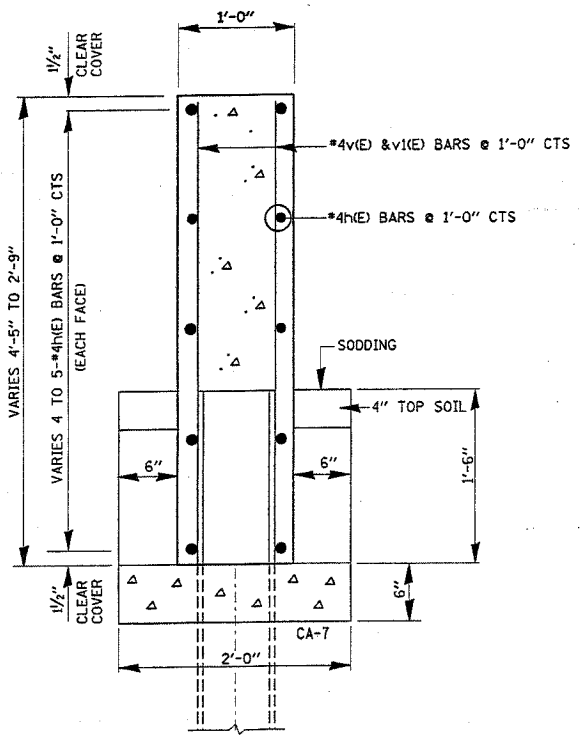
SHEET S2 OF S3

CONTRACT NO. 62915
PROJECT NO. D-91-129-05

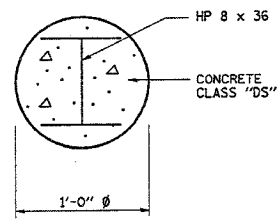


ELEVATION
(WALL REINFORCEMENT DETAILS)

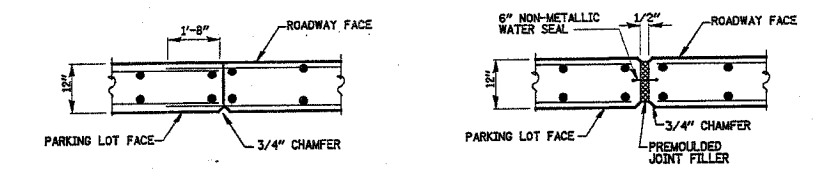
PLAN
(WALL REINFORCEMENT DETAILS)



TYPICAL DETAIL



SECTION A-A



RETAINING WALL JOINT DETAILS

LEGEND:
 (E) = EXPANSION JOINT
 (C) = CONSTRUCTION JOINT
 E.F. = EACH FACE
 EL. = ELEVATION

SIZE	LENGTH
#4	1'-8"

BAR	NO.	SIZE	LENGTH	SHAPE
h(E)	54	#4	21'-9"	—
v(E)	132	#4	4'-2"	—
v(E)	132	#4	3'-7"	—

NOTE:
 COST OF WEEP HOLES INCLUDED IN CONCRETE STRUCTURES
 BARS INDICATED 4x3 #4h @ 12" CTS INDICATED 4 LINES OF BARS WITH 3 LENGTHS PER LINE OF h BARS AT 12" O/C

NAME	DATE

ILLINOIS DEPARTMENT OF TRANSPORTATION
 WENTWORTH AVENUE
 AT RIVER OAK DRIVE
 RETAINING WALL
 REINFORCEMENT DETAILS
 S.N. 016-W982
 SCALE: VERT. DATE: JANUARY, 2007
 DRAWN BY: MVT
 CHECKED BY: RSS

1/24/2007
 c:\projects\struct\river_oak.drn dgm
 DISTRICT ONE - DESIGN
 PLAN PREPARATION ENGINEER JOSE A. DOMINGUEZ / RUSS SINHA (847) 705-4209 / ATTENTION MARK V. TINIAKOS (847) 705-4266