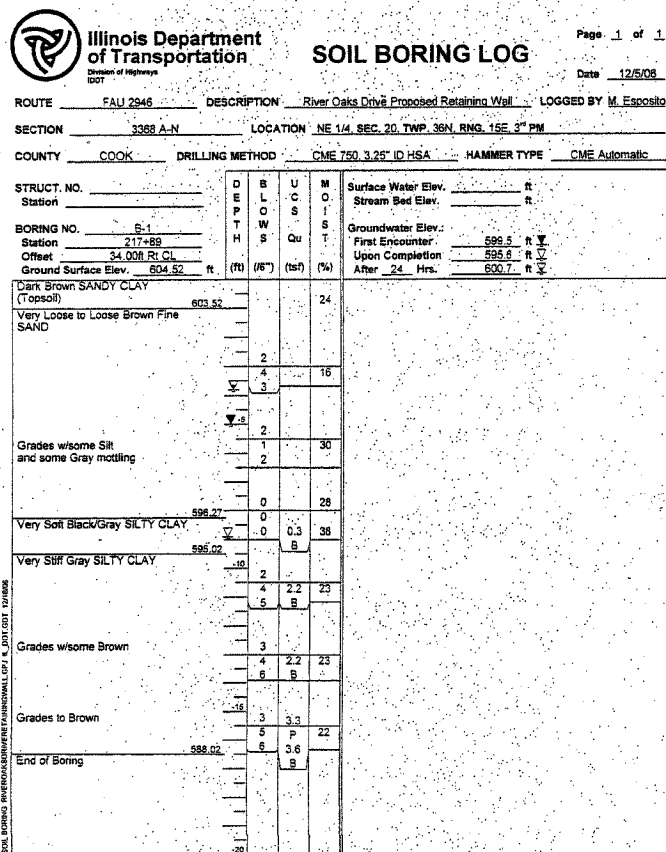


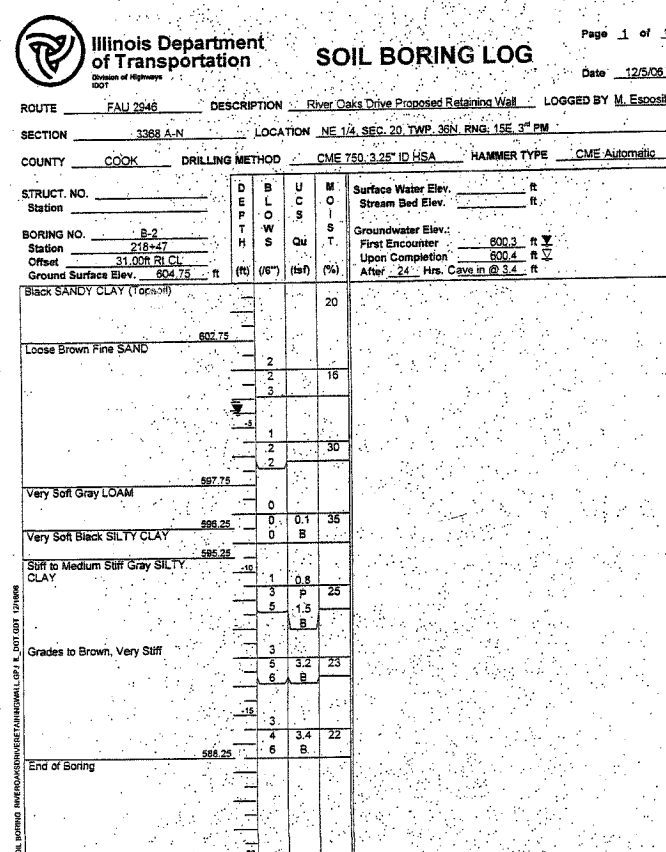
F.A.U. RTE.	SECTION	COUNTY	TOTAL SHEETS	SHEET NO.
2946	3368 A-N	COOK	74	45
STA. 217+78.9		TO STA. 219+08.7		
FED. ROAD DIST. NO.		ILLINOIS FED. AID PROJECT		

SHEET S3 OF S3

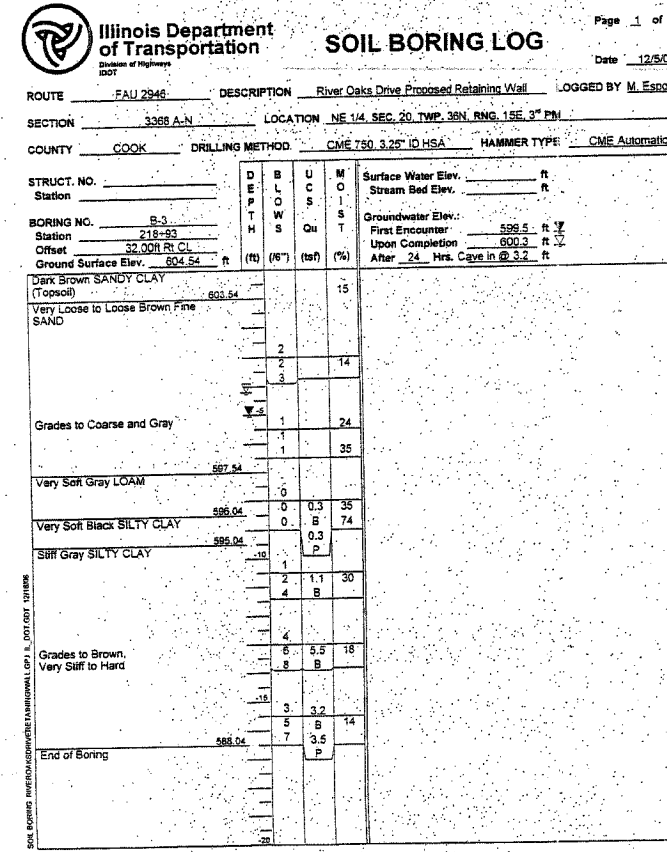
CONTRACT NO. 62915
PROJECT NO. D-91-129-05



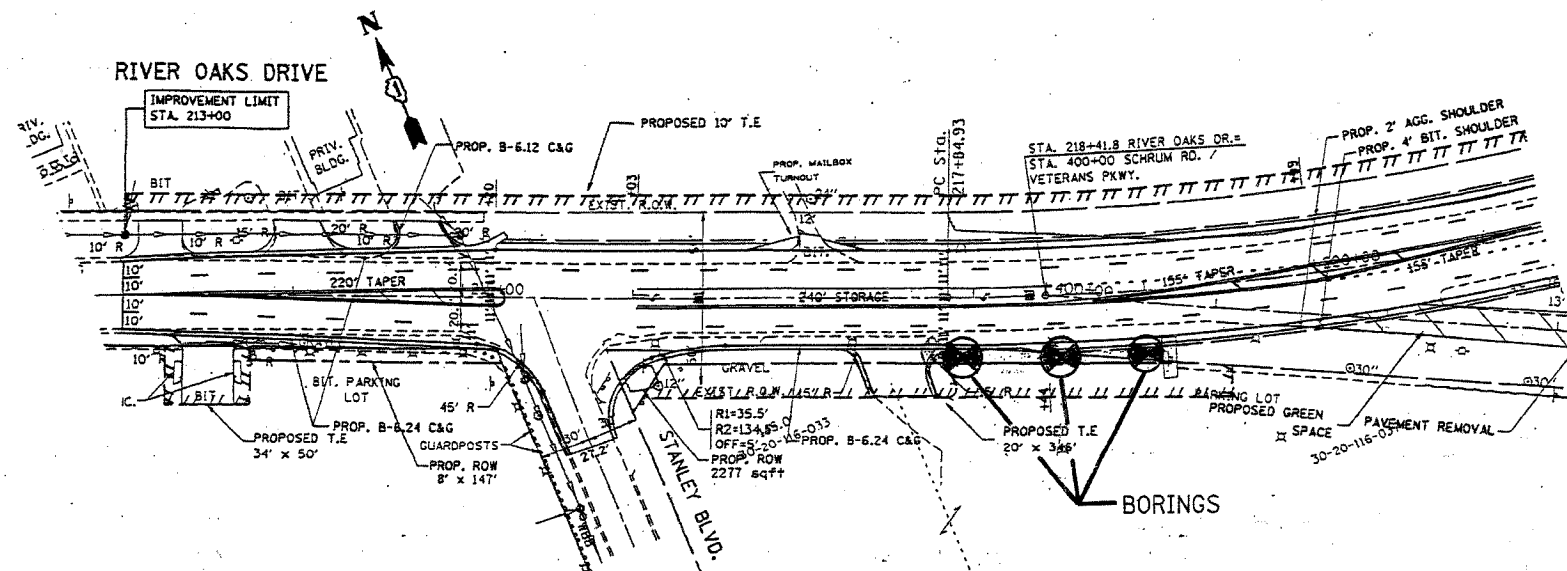
The Unconfined Compressive Strength (UCS) Failure Mode is indicated by (B-Bulge, S-Shear, P-Penetrometer)
The SPT (N value) is the sum of the last two blow values in each sampling zone (AASHTO T206) BBS, from 137 (Rev. 8-99)



The Unconfined Compressive Strength (UCS) Failure Mode is indicated by (B-Bulge, S-Shear, P-Penetrometer)
The SPT (N value) is the sum of the last two blow values in each sampling zone (AASHTO T206) BBS, from 137 (Rev. 8-99)



The Unconfined Compressive Strength (UCS) Failure Mode is indicated by (B-Bulge, S-Shear, P-Penetrometer)
The SPT (N value) is the sum of the last two blow values in each sampling zone (AASHTO T206) BBS, from 137 (Rev. 8-99)



REVISIONS	
NAME	DATE

ILLINOIS DEPARTMENT OF TRANSPORTATION
WENTWORTH AVENUE
AT RIVER OAK DRIVE
SOIL BORING
S.N. 016-W982
SCALE: VERT. HORIZ. DATE: JANUARY, 2007 DRAWN BY: MVT CHECKED BY: RSS

1/19/2007 c:\projects\struct\river_oadk_drive.dgn DISTRICT ONE - DESIGN PLAN PREPARATION ENGINEER JOSE A. DOMINGUEZ / RUSS SINHA (847) 705-4209 / ATTENTION MARK V. TINAKOS (847) 705-4266