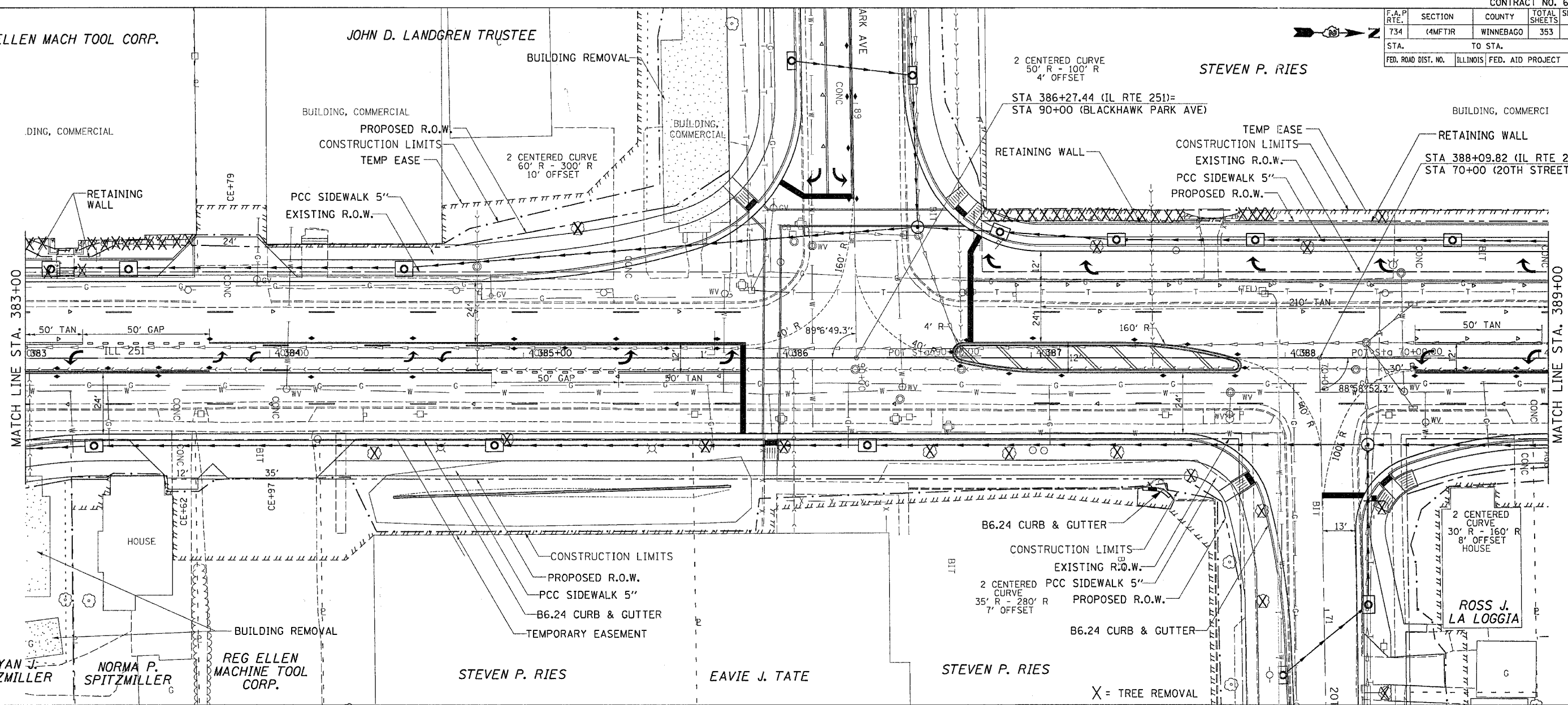


F.A.P. RTE. 734	SECTION (4MFT)R	COUNTY WINNEBAGO	TOTAL SHEETS 353	SHEET NO. 61
STA.	TO STA.		FED. ROAD DIST. NO.	
ILLINOIS		FED. AID PROJECT		

REG ELLEN MACH TOOL CORP.

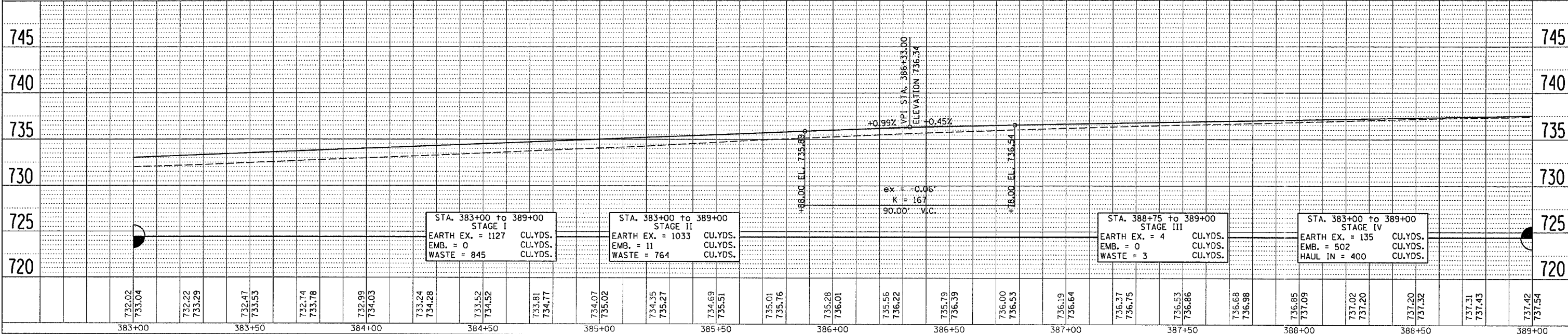
JOHN D. LANDGREN TRUSTEE

STEVEN P. RIES



PLAN	DATE
SURVEYED	
ALIGNED	
CHECKED	
BY	
NO.	

PROFILE	DATE
SURVEYED	
GRADES	
NOTED	
BY	
NO.	



PLT DATE = Fri Apr 27 10:44:06 2007  
FILE NAME = c:\p\proj\64450\218181\10668991.mxd  
PLT SCALE = 20.0000 / 1" = 100'  
USER NAME = ggran