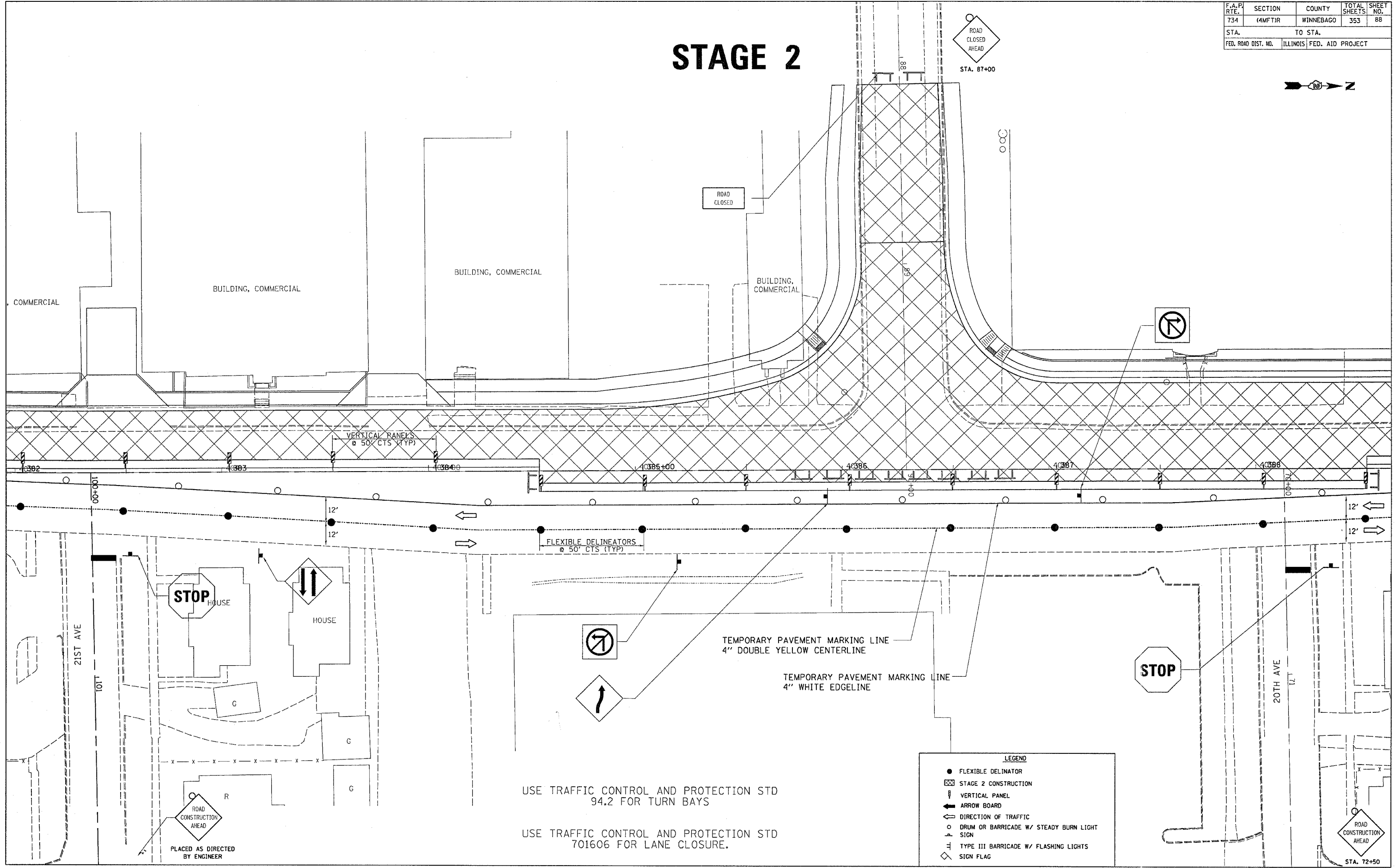
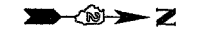


F.A.P. RTE.	SECTION	COUNTY	TOTAL SHEETS	SHEET NO.
734	(4MFT)R	WINNEBAGO	353	88
STA.		TO STA.		
FED. ROAD DIST. NO.		ILLINOIS FED. AID PROJECT		

# STAGE 2

ROAD CLOSED AHEAD  
STA. 87+00



USE TRAFFIC CONTROL AND PROTECTION STD 94.2 FOR TURN BAYS  
USE TRAFFIC CONTROL AND PROTECTION STD 701606 FOR LANE CLOSURE.

**LEGEND**

- FLEXIBLE DELINEATOR
- ▨ STAGE 2 CONSTRUCTION
- ▭ VERTICAL PANEL
- ← ARROW BOARD
- ⇄ DIRECTION OF TRAFFIC
- DRUM OR BARRICADE W/ STEADY BURN LIGHT
- ⊥ SIGN
- ⊥ TYPE III BARRICADE W/ FLASHING LIGHTS
- ◇ SIGN FLAG

PLOT DATE: Fri Apr 27 10:36:38 2007  
FILE NAME: c:\p\proj\102168\102168.dgn  
SCALE: 1/8" = 1'-0"  
USER: NAME: graham