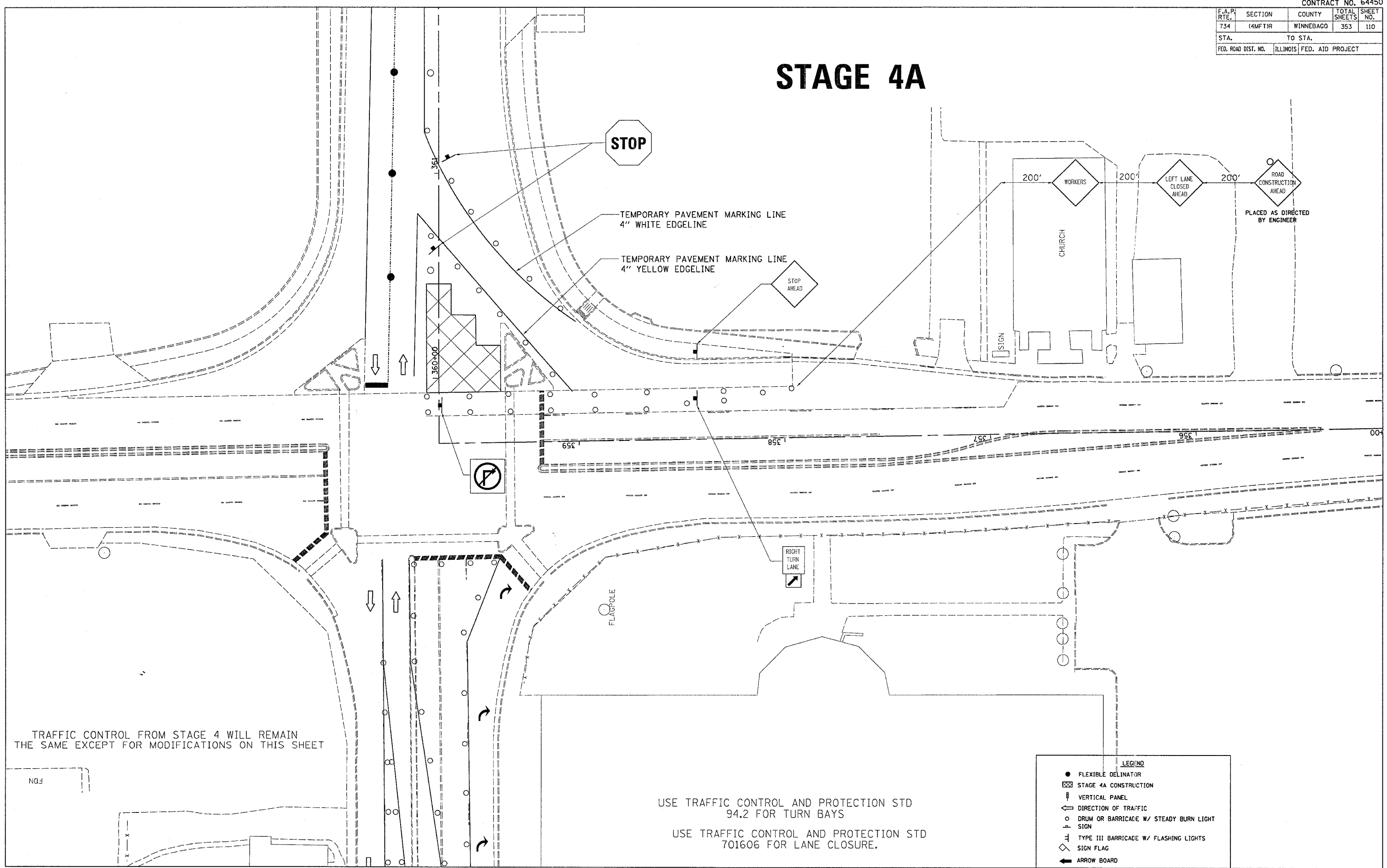


F.A.P. RTE.	SECTION	COUNTY	TOTAL SHEETS	SHEET NO.
734	(4MFT)R	WINNEBAGO	353	110
STA.		TO STA.		
FED. ROAD DIST. NO.		ILLINOIS	FED. AID PROJECT	

STAGE 4A



STOP

TEMPORARY PAVEMENT MARKING LINE
4" WHITE EDGELINE

TEMPORARY PAVEMENT MARKING LINE
4" YELLOW EDGELINE

STOP AHEAD

200'

CHURCH

200'

LEFT LANE CLOSED AHEAD

200'

ROAD CONSTRUCTION AHEAD

PLACED AS DIRECTED BY ENGINEER

RIGHT TURN LANE

FLAGPOLE

TRAFFIC CONTROL FROM STAGE 4 WILL REMAIN THE SAME EXCEPT FOR MODIFICATIONS ON THIS SHEET

USE TRAFFIC CONTROL AND PROTECTION STD 94.2 FOR TURN BAYS
USE TRAFFIC CONTROL AND PROTECTION STD 701606 FOR LANE CLOSURE.

LEGEND

- FLEXIBLE DELINATOR
- ▨ STAGE 4A CONSTRUCTION
- ▮ VERTICAL PANEL
- ↔ DIRECTION OF TRAFFIC
- DRUM OR BARRICADE W/ STEADY BURN LIGHT SIGN
- ⊥ TYPE III BARRICADE W/ FLASHING LIGHTS
- ◇ SIGN FLAG
- ➔ ARROW BOARD

PLOT DATE = Fri Apr 27 10:38:47 2007
 FILE NAME = c:\projects\216598\vd16598a1.dgn
 USER NAME = gromp