

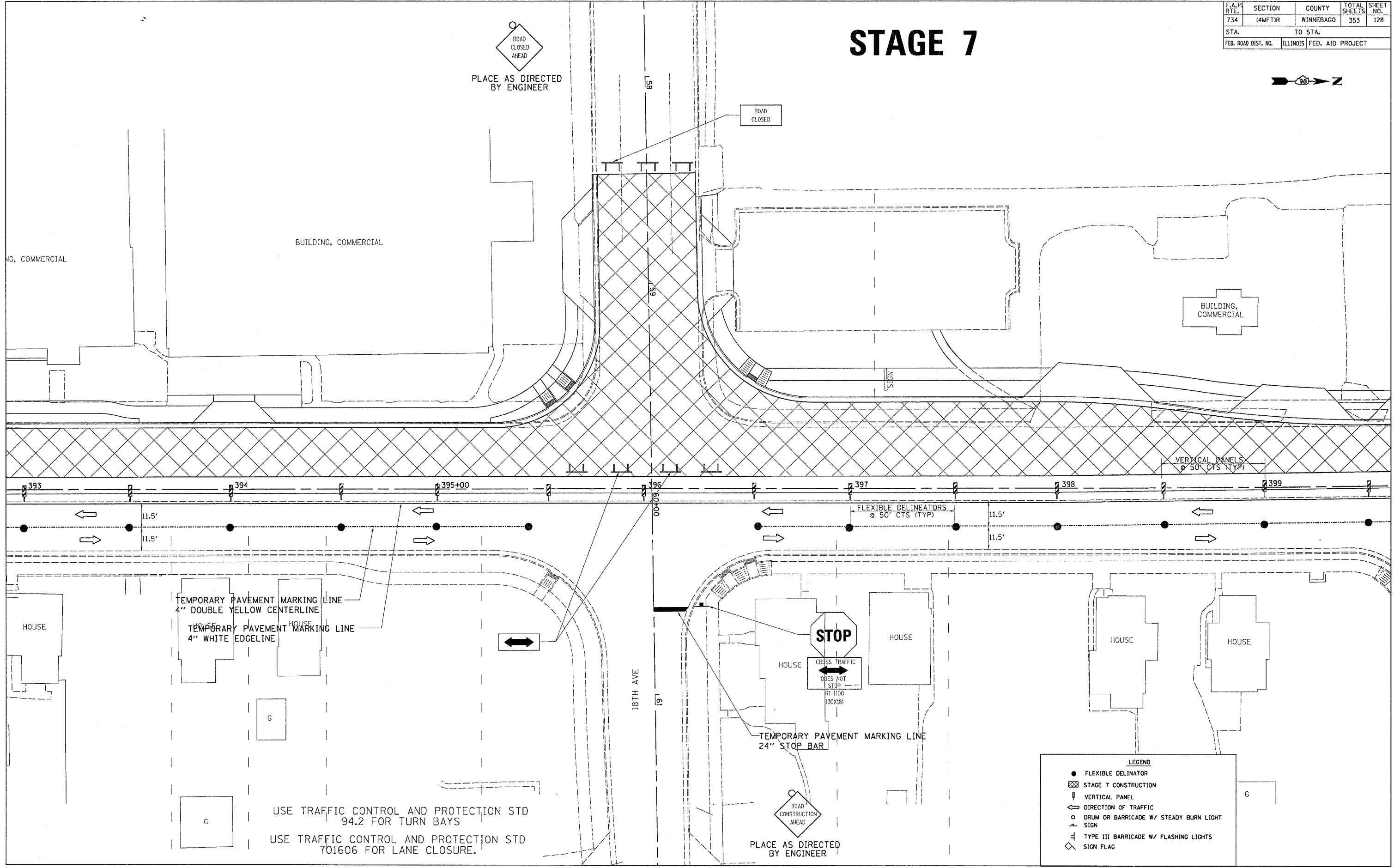
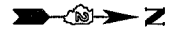
F.A.P. RTE.	SECTION	COUNTY	TOTAL SHEETS	SHEET NO.
734	4MFTJR	WINNEBAGO	353	128
STA.		TO STA.		
FED. ROAD DIST. NO.		ILLINOIS	FED. AID PROJECT	

# STAGE 7



PLACE AS DIRECTED BY ENGINEER

ROAD CLOSED



PLOT DATE = Fri Apr 27 10:38:58 2007  
 FILE NAME = c:\p\proj\216598\of189461.dgn  
 USER = jgreen  
 USER NAME = jgreen

USE TRAFFIC CONTROL AND PROTECTION STD 94.2 FOR TURN BAYS  
 USE TRAFFIC CONTROL AND PROTECTION STD 701606 FOR LANE CLOSURE.

**LEGEND**

- FLEXIBLE DELINEATOR
- ▨ STAGE 7 CONSTRUCTION
- ⊥ VERTICAL PANEL
- ← DIRECTION OF TRAFFIC
- DRUM OR BARRICADE W/ STEADY BURN LIGHT SIGN
- ⊥ TYPE III BARRICADE W/ FLASHING LIGHTS
- ◇ SIGN FLAG