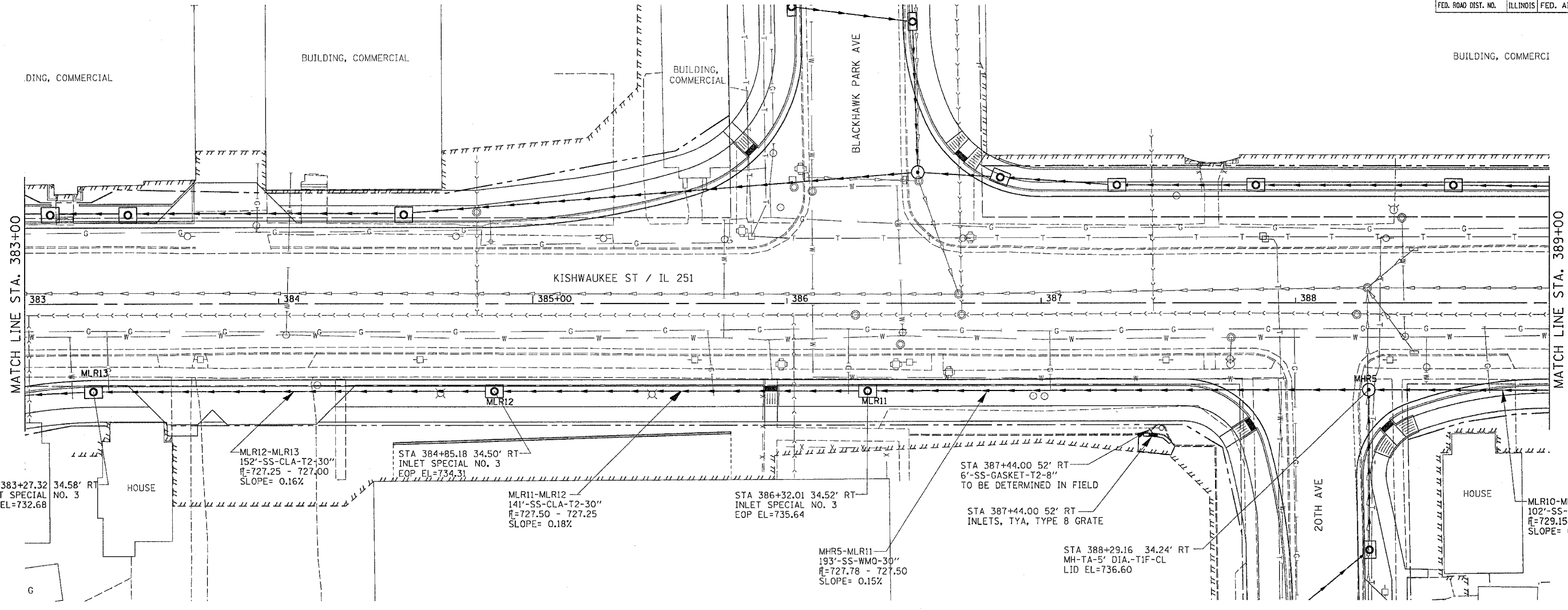
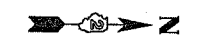
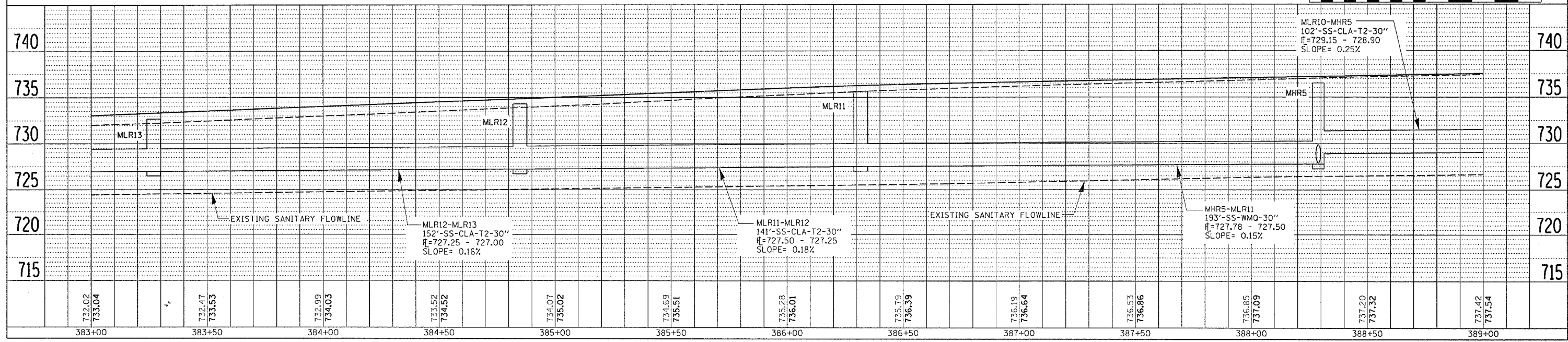
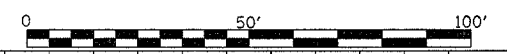


F.A.P. RTE.	SECTION	COUNTY	TOTAL SHEETS	SHEET NO.
734	4MFT/R	WINNEBAGO	353	143
STA. 383+00		TO STA. 389+00		
FED. ROAD DIST. NO.	ILLINOIS	FED. AID PROJECT		



STA 383+27.32 34.58' RT INLET SPECIAL NO. 3 EOP EL=732.68
 MLR12-MLR13 152'-SS-CLA-T2-30" R=727.25 - 727.00 SLOPE= 0.16%
 STA 384+85.18 34.50' RT INLET SPECIAL NO. 3 EOP EL=734.31
 MLR11-MLR12 141'-SS-CLA-T2-30" R=727.50 - 727.25 SLOPE= 0.18%
 STA 386+32.01 34.52' RT INLET SPECIAL NO. 3 EOP EL=735.64
 MHR5-MLR11 193'-SS-WM0-30" R=727.78 - 727.50 SLOPE= 0.15%
 STA 387+44.00 52' RT 6'-SS-GASKET-T2-8" TO BE DETERMINED IN FIELD
 STA 387+44.00 52' RT INLETS, TYA, TYPE 8 GRATE
 STA 388+29.16 34.24' RT MH-TA-5' DIA.-TIF-CL LID EL=736.60
 MLR10-MHR5 102'-SS-CLA-T2-30" R=729.15 - 728.90 SLOPE= 0.25%



PLAN	DATE
BY	
REVISIONS	
NO.	DATE
1	

PROFILE	DATE
BY	
REVISIONS	
NO.	DATE
1	

DATE TIME
 * * * * *
 * * * * *
 * * * * *
 * * * * *
 * * * * *

IL 251 DRAINAGE DETAILS RIGHT