

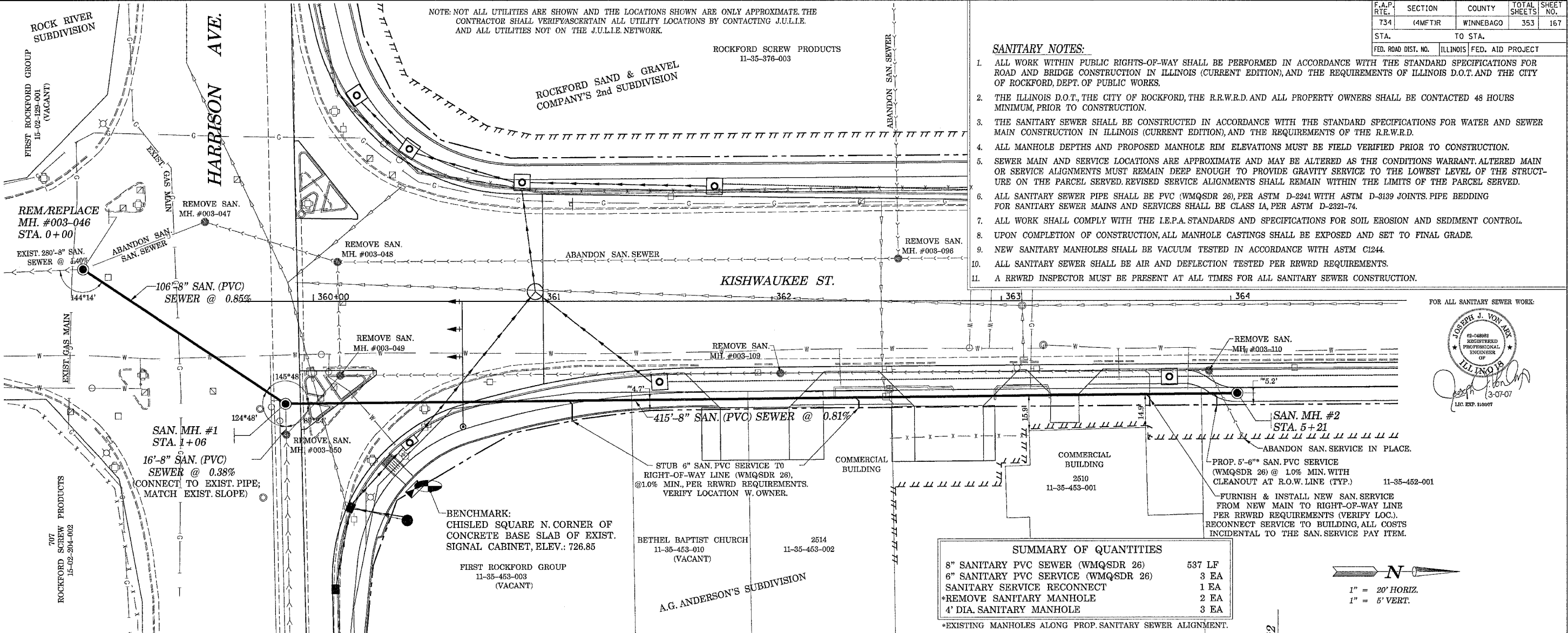
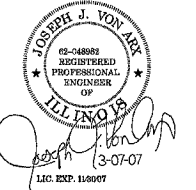
F.A.P. RTE.	SECTION	COUNTY	TOTAL SHEETS	SHEET NO.
734	(4MFT)R	WINNEBAGO	353	167
STA.	TO STA.			
FED. ROAD DIST. NO.	ILLINOIS	FED. AID PROJECT		

NOTE: NOT ALL UTILITIES ARE SHOWN AND THE LOCATIONS SHOWN ARE ONLY APPROXIMATE. THE CONTRACTOR SHALL VERIFY/ASCERTAIN ALL UTILITY LOCATIONS BY CONTACTING J.U.L.I.E. AND ALL UTILITIES NOT ON THE J.U.L.I.E. NETWORK.

**SANITARY NOTES:**

1. ALL WORK WITHIN PUBLIC RIGHTS-OF-WAY SHALL BE PERFORMED IN ACCORDANCE WITH THE STANDARD SPECIFICATIONS FOR ROAD AND BRIDGE CONSTRUCTION IN ILLINOIS (CURRENT EDITION), AND THE REQUIREMENTS OF ILLINOIS D.O.T. AND THE CITY OF ROCKFORD, DEPT. OF PUBLIC WORKS.
2. THE ILLINOIS D.O.T., THE CITY OF ROCKFORD, THE R.R.W.R.D. AND ALL PROPERTY OWNERS SHALL BE CONTACTED 48 HOURS MINIMUM, PRIOR TO CONSTRUCTION.
3. THE SANITARY SEWER SHALL BE CONSTRUCTED IN ACCORDANCE WITH THE STANDARD SPECIFICATIONS FOR WATER AND SEWER MAIN CONSTRUCTION IN ILLINOIS (CURRENT EDITION), AND THE REQUIREMENTS OF THE R.R.W.R.D.
4. ALL MANHOLE DEPTHS AND PROPOSED MANHOLE RIM ELEVATIONS MUST BE FIELD VERIFIED PRIOR TO CONSTRUCTION.
5. SEWER MAIN AND SERVICE LOCATIONS ARE APPROXIMATE AND MAY BE ALTERED AS THE CONDITIONS WARRANT. ALTERED MAIN OR SERVICE ALIGNMENTS MUST REMAIN DEEP ENOUGH TO PROVIDE GRAVITY SERVICE TO THE LOWEST LEVEL OF THE STRUCTURE ON THE PARCEL SERVED. REVISED SERVICE ALIGNMENTS SHALL REMAIN WITHIN THE LIMITS OF THE PARCEL SERVED.
6. ALL SANITARY SEWER PIPE SHALL BE PVC (WMQSDR 26), PER ASTM D-2241 WITH ASTM D-3139 JOINTS. PIPE BEDDING FOR SANITARY SEWER MAINS AND SERVICES SHALL BE CLASS 1A, PER ASTM D-2321-74.
7. ALL WORK SHALL COMPLY WITH THE L.E.P.A. STANDARDS AND SPECIFICATIONS FOR SOIL EROSION AND SEDIMENT CONTROL.
8. UPON COMPLETION OF CONSTRUCTION, ALL MANHOLE CASTINGS SHALL BE EXPOSED AND SET TO FINAL GRADE.
9. NEW SANITARY MANHOLES SHALL BE VACUUM TESTED IN ACCORDANCE WITH ASTM C1244.
10. ALL SANITARY SEWER SHALL BE AIR AND DEFLECTION TESTED PER RRWRD REQUIREMENTS.
11. A RRWRD INSPECTOR MUST BE PRESENT AT ALL TIMES FOR ALL SANITARY SEWER CONSTRUCTION.

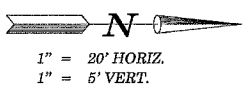
FOR ALL SANITARY SEWER WORK:



**SUMMARY OF QUANTITIES**

8" SANITARY PVC SEWER (WMQSDR 26)	537 LF
6" SANITARY PVC SERVICE (WMQSDR 26)	3 EA
SANITARY SERVICE RECONNECT	1 EA
*REMOVE SANITARY MANHOLE	2 EA
4' DIA. SANITARY MANHOLE	3 EA

\*EXISTING MANHOLES ALONG PROP. SANITARY SEWER ALIGNMENT.



735	REM/REPLACE MH. #003-046 (4' DIA.)	EXIST. 233.2'-8" SAN. SEWER @ 0.38%	NOTE: ALL SANITARY SEWER MAINS AND SERVICES SHALL BE WMQSDR 26 PVC PIPE. NOTE: ALL FITTINGS, ADAPTORS, GASKETS AND MISC. PIPE NEEDED TO CONNECT TO EXISTING SANITARY SEWER PIPES SHALL BE INCIDENTAL TO THE SEWER INSTALLATION. CONNECTIONS SHALL BE MADE TO STRUCTURALLY SOUND PIPE.	735
730			APPROX. SURF. ALONG PROP. SANITARY SEWER ALIGNMENT	730
725				725
720				720
715				715
710				710

NOTE: THE CONTRACTOR SHALL VERIFY ALL RIM ELEVATIONS PRIOR TO ORDERING MANHOLES.

PLOT DATE = Fri, Apr 27 10:28:48 2007  
 FILE NAME = c:\pvc\jms\216599.dwg  
 PLOT SCALE = 21.0000 / IN.  
 USER NAME = jgrant

**11-35-430 KISHWAUKEE ST DB-003 4237**