

Drainage Area EX = 4.5 Acres		Drainage Area PR = 4.5 Acres			
Existing Low Grade Elevation: 737.15 ft. @ 214+46		Proposed Low Grade Elevation: 737.34 ft. @ 214+46			
Flood Year	Frequency	Discharge EX cfs	Discharge PR cfs	Headwater Elev. (ft) Existing	Proposed
Ten-Year	10	9.0	9.0	734.14	734.37
Design	50	12.0	12.0	737.47	734.91
Base	100	14.0	14.0	734.7	735.32
EX Overtopping	>500				
PR Overtopping	>500				
Max Calc	500	20.0	20.0	735.59	736.89

BURDETTE DAUPHIN

US RTE 52  
 EXIST. CURVE 250  
 PI STA. = 225+45.82  
 $\Delta = 9^\circ 59' 34''$  (LT)  
 $D = 1^\circ 00' 08''$   
 $R = 5,717.59'$   
 $T = 499.86'$   
 $L = 997.18'$   
 $E = 21.81'$   
 $e = 2.3\%$   
 $T.R. = 39'$   
 $S.E. RUN = 60'$   
 P.C. STA. = 220+45.96  
 P.T. STA. = 230+43.14

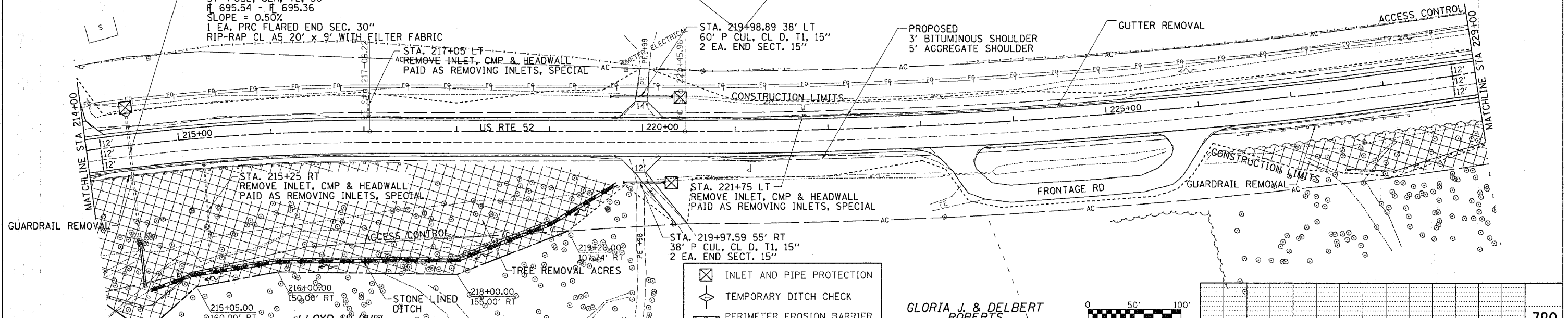
PROP. CURVE S250  
 PI STA. = 225+45.82  
 $\Delta = 9^\circ 59' 34''$  (LT)  
 $D = 1^\circ 00' 08''$   
 $R = 5,717.59'$   
 $T = 499.86'$   
 $L = 997.18'$   
 $E = 21.81'$   
 $e = 2.3\%$   
 $T.R. = 39'$   
 $S.E. RUN = 60'$   
 P.C. STA. = 220+45.96  
 P.T. STA. = 230+43.14

F.A.P. RTE.	SECTION	COUNTY	TOTAL SHEETS	SHEET NO.
*	**	CARROLL	548	92
STA.		TO STA.		
FED. ROAD DIST. NO.		ILLINOIS FED. AID PROJECT		
* ROUTE 17 (US 52 / IL 64)				
** (1,2)RS & (3-1)RS-1				

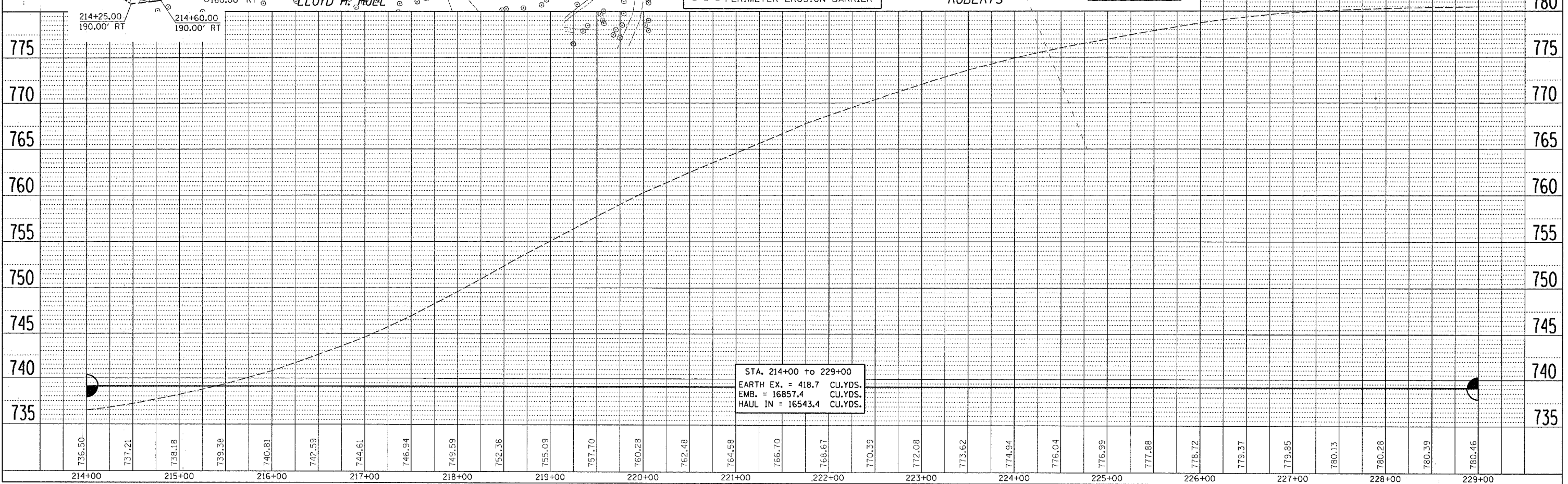
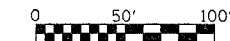
NOTES:

- CULVERT TO BE CLEANED OUT PRIOR TO CONSTRUCTING CULVERT LINER INSERTION.

JACK W. & JANET PASCHAL



GLORIA J. & DELBERT ROBERTS



STA. 214+00 to 229+00  
 EARTH EX. = 418.7 CU.YDS.  
 EMB. = 16857.4 CU.YDS.  
 HAUL IN = 16543.4 CU.YDS.

DATE	BY	REVISION

DATE	BY	REVISION

DATE-TIME  
 REF  
 REF  
 REF