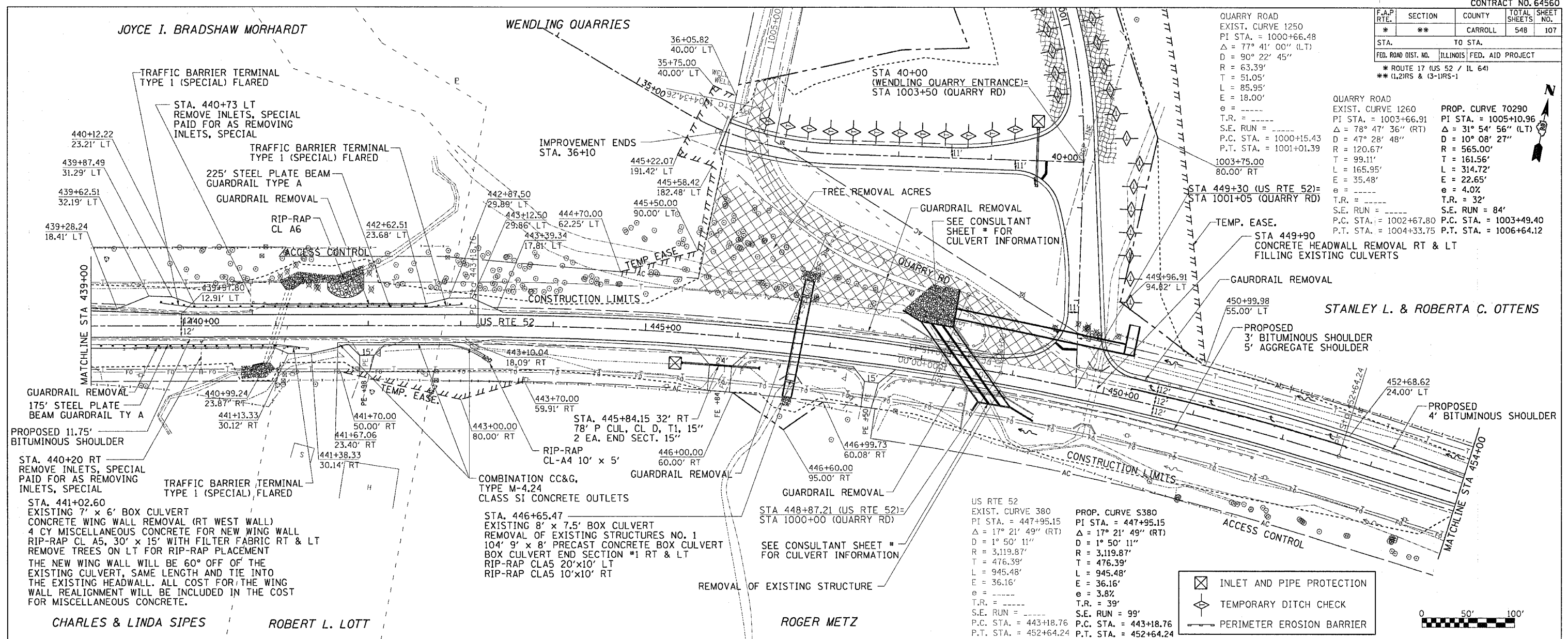


F.A.P. RTE.	SECTION	COUNTY	TOTAL SHEETS	SHEET NO.
*	**	CARROLL	548	107

FED. ROAD DIST. NO. ILLINOIS FED. AID PROJECT
 ** ROUTE 17 (US 52 / IL 64)
 ** (1,2)RS & (3-1)RS-1

JOYCE I. BRADSHAW MORHARDT

WENDLING QUARRIES



QUARRY ROAD
 EXIST. CURVE 1250
 PI STA. = 1000+66.48
 $\Delta = 77^\circ 41' 00''$ (LT)
 $D = 90^\circ 22' 45''$
 $R = 63.39'$
 $T = 51.05'$
 $L = 85.95'$
 $E = 18.00'$
 $e = \text{---}$
 $T.R. = \text{---}$
 S.E. RUN = ---
 P.C. STA. = 1000+15.43
 P.T. STA. = 1001+01.39

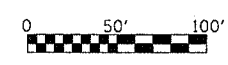
QUARRY ROAD
 EXIST. CURVE 1260
 PI STA. = 1003+66.91
 $\Delta = 78^\circ 47' 36''$ (RT)
 $D = 47^\circ 28' 48''$
 $R = 120.67'$
 $T = 99.11'$
 $L = 165.95'$
 $E = 35.48'$
 $e = \text{---}$
 $T.R. = \text{---}$
 S.E. RUN = ---
 P.C. STA. = 1002+67.80
 P.T. STA. = 1004+33.75

STANLEY L. & ROBERTA C. OTTENS

US RTE 52
 EXIST. CURVE 380
 PI STA. = 447+95.15
 $\Delta = 17^\circ 21' 49''$ (RT)
 $D = 1^\circ 50' 11''$
 $R = 3,119.87'$
 $T = 476.39'$
 $L = 945.48'$
 $E = 36.16'$
 $e = 3.8\%$
 $T.R. = 39'$
 S.E. RUN = ---
 P.C. STA. = 443+18.76
 P.T. STA. = 452+64.24

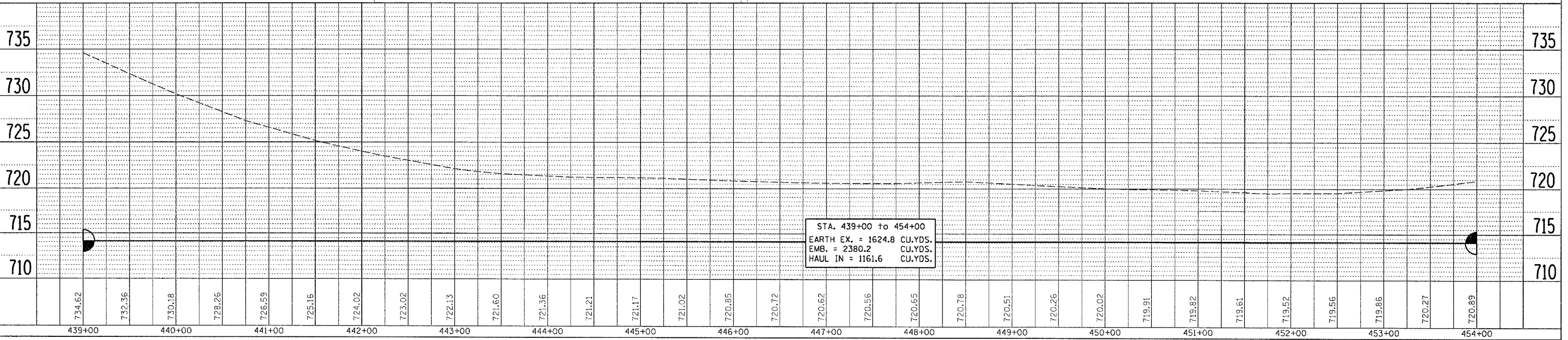
PROP. CURVE S380
 PI STA. = 447+95.15
 $\Delta = 17^\circ 21' 49''$ (RT)
 $D = 1^\circ 50' 11''$
 $R = 3,119.87'$
 $T = 476.39'$
 $L = 945.48'$
 $E = 36.16'$
 $e = 3.8\%$
 $T.R. = 39'$
 S.E. RUN = ---
 P.C. STA. = 443+18.76
 P.T. STA. = 452+64.24

- INLET AND PIPE PROTECTION
- TEMPORARY DITCH CHECK
- PERIMETER EROSION BARRIER



DATE	BY	REVISION

DATE	BY	REVISION



DATE-TIME
 CON-SPEC
 REF
 REF
 REF