

ALAN L. &
ARTHUR D. CROUSE

CONTRACT NO. 64560

F.A.P. RTE.	SECTION	COUNTY	TOTAL SHEETS	SHEET NO.
*	**	CARROLL	548	120

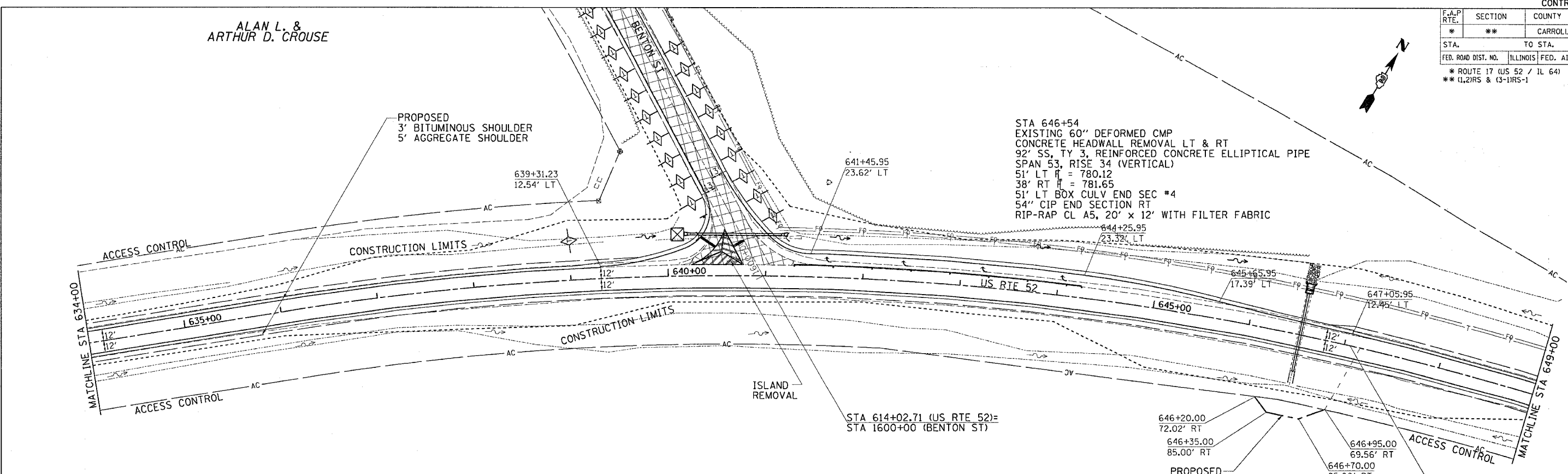
STA. TO STA.
FED. ROAD DIST. NO. ILLINOIS FED. AID PROJECT
* ROUTE 17 (US 52 / IL 64)
** (1,2)RS & (3-1)RS-1

DATE	BY	REVISION

PLAN
SURVEYED
NOTE BOOK
NO.

DATE	BY	REVISION

PROFILE
SURVEYED
NOTE BOOK
NO.



Drainage Area = 12.4 Acres Drainage Area PR = 12.4 Acres
Existing Low Grade Elevation: 793.38 ft. @ 646+52
Proposed Low Grade Elevation: 793.57 ft. @ 646+52

Flood Year	Discharge EX cfs	Discharge PR cfs	Headwater Elev. (ft) Existing	Headwater Elev. (ft) Proposed
Ten-Year	28.0	28.0	783.46	784.1
Design	39.0	39.0	783.67	785.31
Base	45.0	45.0	783.79	786.15
EX Overtopping	434			
PR Overtopping	>500			
Max Calc	500	62.0	784.15	789.15

NOTES:
1. CLEAN EXISTING CULVERT PRIOR TO INSTALLING RCEP PIPE.
2. GRADE AND SHAPE CHANNEL AS NECESSARY.

US RTE 52
EXIST. CURVE S1240
PI STA. = 646+71.65
 $\Delta = 40^\circ 37' 36''$ (RT)
D = 2° 00' 02"
R = 2,864.11'
T = 1,060.22'
L = 2,030.85'
E = 189.94'
e = ----
T.R. = ----
S.E. RUN = ----
P.C. STA. = 636+11.43
P.T. STA. = 656+42.28

PROP. CURVE S1240
PI STA. = 646+72.12
 $\Delta = 40^\circ 37' 36''$ (RT)
D = 2° 00' 02"
R = 2,864.11'
T = 1,060.22'
L = 2,030.85'
E = 189.94'
e = 3.9%
T.R. = 39'
S.E. RUN = 102'
P.C. STA. = 636+11.90
P.T. STA. = 656+42.75

