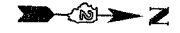


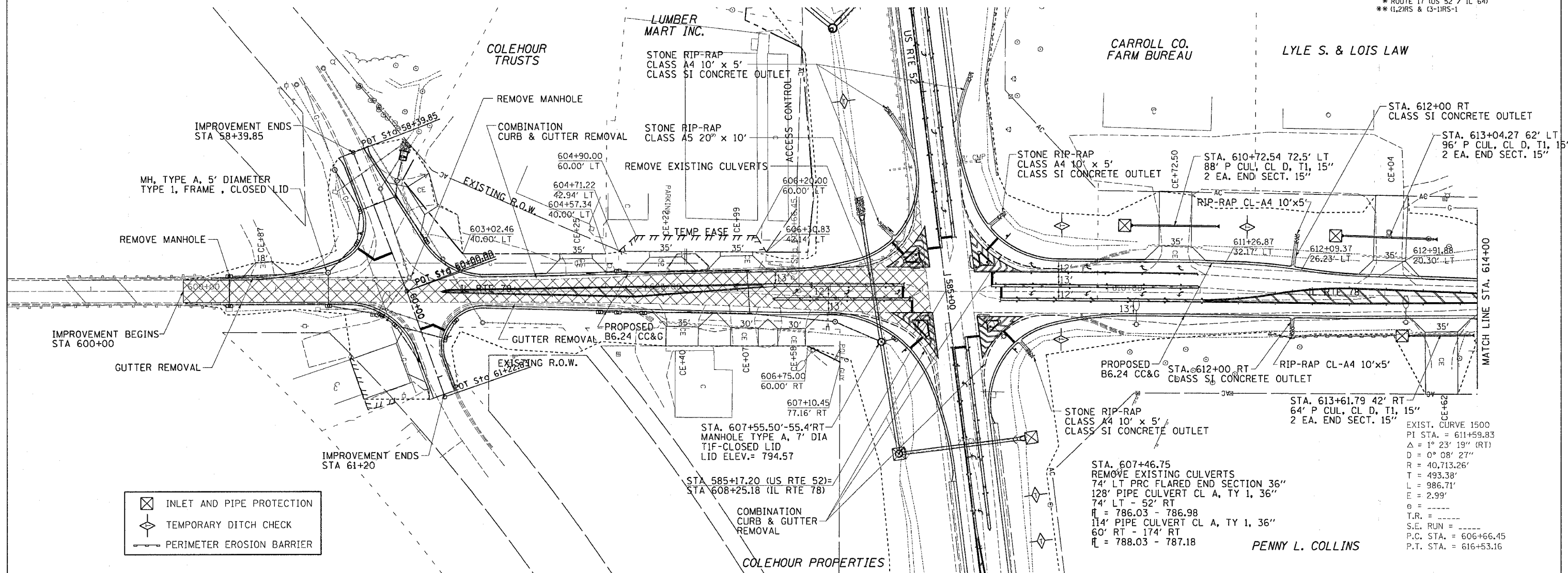
F.A.P. RTE.	SECTION	COUNTY	TOTAL SHEETS	SHEET NO.
*	**	CARROLL	548	130
STA.		TO STA.		
FED. ROAD DIST. NO.		ILLINOIS FED. AID PROJECT		
* ROUTE 17 (US 52 / IL 64)				
** (L2)RS & (3-1)RS-1				

IL RTE 78



PLAN	DATE	BY
REVISION		
NO.		

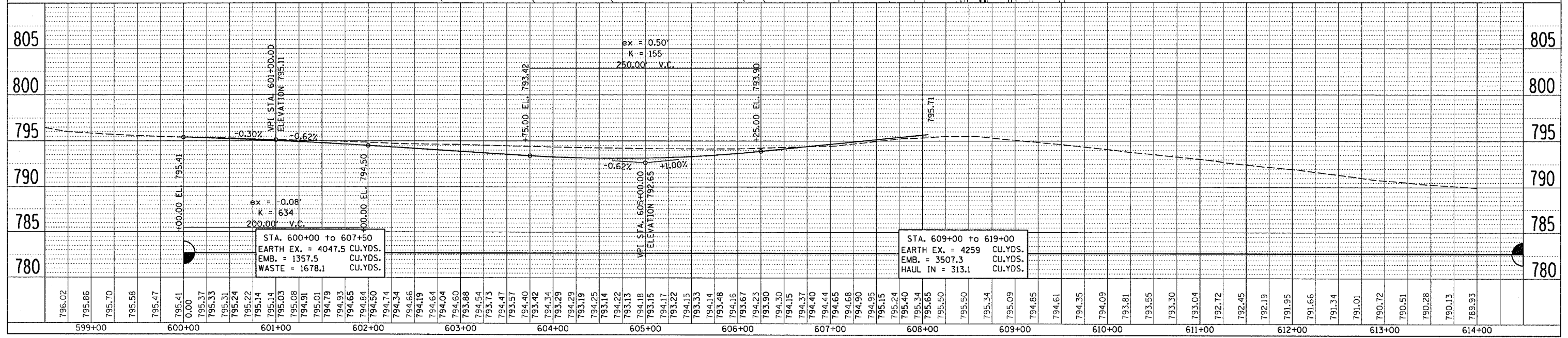
PROFILE	DATE	BY
REVISION		
NO.		



INLET AND PIPE PROTECTION
 TEMPORARY DITCH CHECK
 PERIMETER EROSION BARRIER

STA. 607+46.75
 REMOVE EXISTING CULVERTS
 74' LT PRC FLARED END SECTION 36"
 74' LT - 52' RT
 114' PIPE CULVERT CL A, TY 1, 36"
 60' RT - 174' RT
 E = 2.99'
 L = 986.71'
 T.R. = -----
 S.C. RUN = -----
 P.C. STA. = 606+66.45
 P.T. STA. = 616+53.16

EXIST. CURVE 1500
 PI STA. = 611+59.83
 $\Delta = 1^\circ 23' 19''$ (RT)
 $D = 0^\circ 08' 27''$
 $R = 40,713.26'$
 $T = 493.38'$
 $L = 986.71'$
 $E = 2.99'$
 $e = -----$
 T.R. = -----
 S.C. RUN = -----
 P.C. STA. = 606+66.45
 P.T. STA. = 616+53.16



DATE-TIME*
 DON-SPEC
 REF
 REF
 REF