

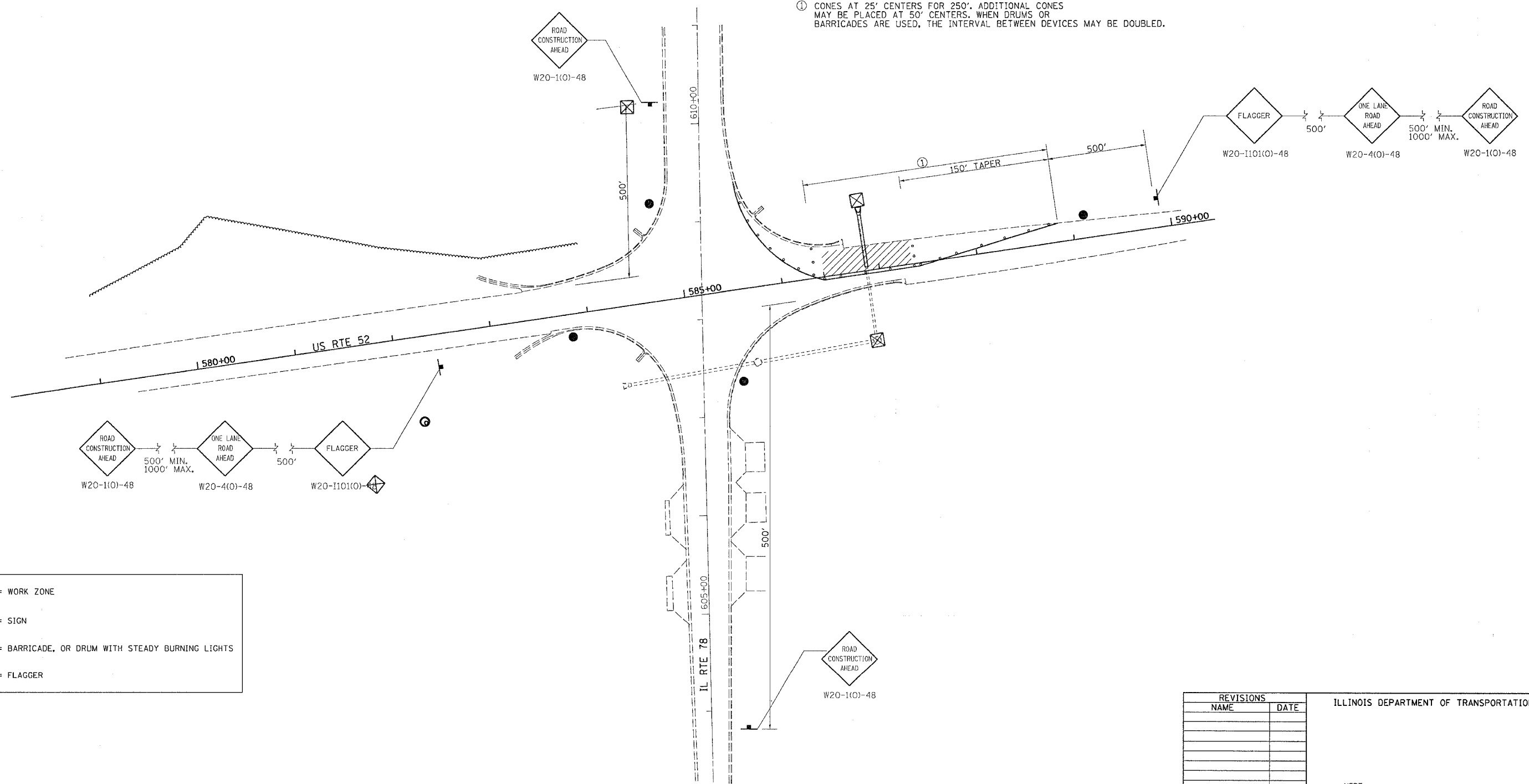
F.A.P. RTE.	SECTION	COUNTY	TOTAL SHEETS	SHEET NO.
22	**	CARROLL	548	170
STA.		TO STA.		
FED. ROAD DIST. NO.		ILLINOIS	FED. AID PROJECT	
* ROUTE 17 (US 52 / IL 64)				
** (1,2)RS & (3-1)RS-1				

STAGING 7

1. USE STANDARD 701201-04 TO REMOVE HALF OF CULVERT AT STA. 586+87.
2. REPLACE CULVERT TO 4' LEFT OF CENTERLINE AND PLACE PATCH.
3. STAGE 6 WILL BE DONE IN 1 DAY.
4. GO TO STAGE 7A.



① CONES AT 25' CENTERS FOR 250'. ADDITIONAL CONES MAY BE PLACED AT 50' CENTERS. WHEN DRUMS OR BARRICADES ARE USED, THE INTERVAL BETWEEN DEVICES MAY BE DOUBLED.



REVISIONS	
NAME	DATE

ILLINOIS DEPARTMENT OF TRANSPORTATION

SCALE: VERT. _____
 HORIZ. _____

DATE _____ DRAWN BY _____
 CHECKED BY _____

PLOT DATE = Fri Mar 23 09:04:18 2007
 FILE NAME = C:\p\proj\64560\207480\stg7\stg7.dgn
 PLOT SCALE = 50.00000 / IN.
 USER NAME = hansonk

STAGING DETAILS