

F.A.P. RTE.	SECTION	COUNTY	TOTAL SHEETS	SHEET NO.
17	**	CARROLL	548	171
STA.		TO STA.		

FED. ROAD DIST. NO. ILLINOIS FED. AID PROJECT

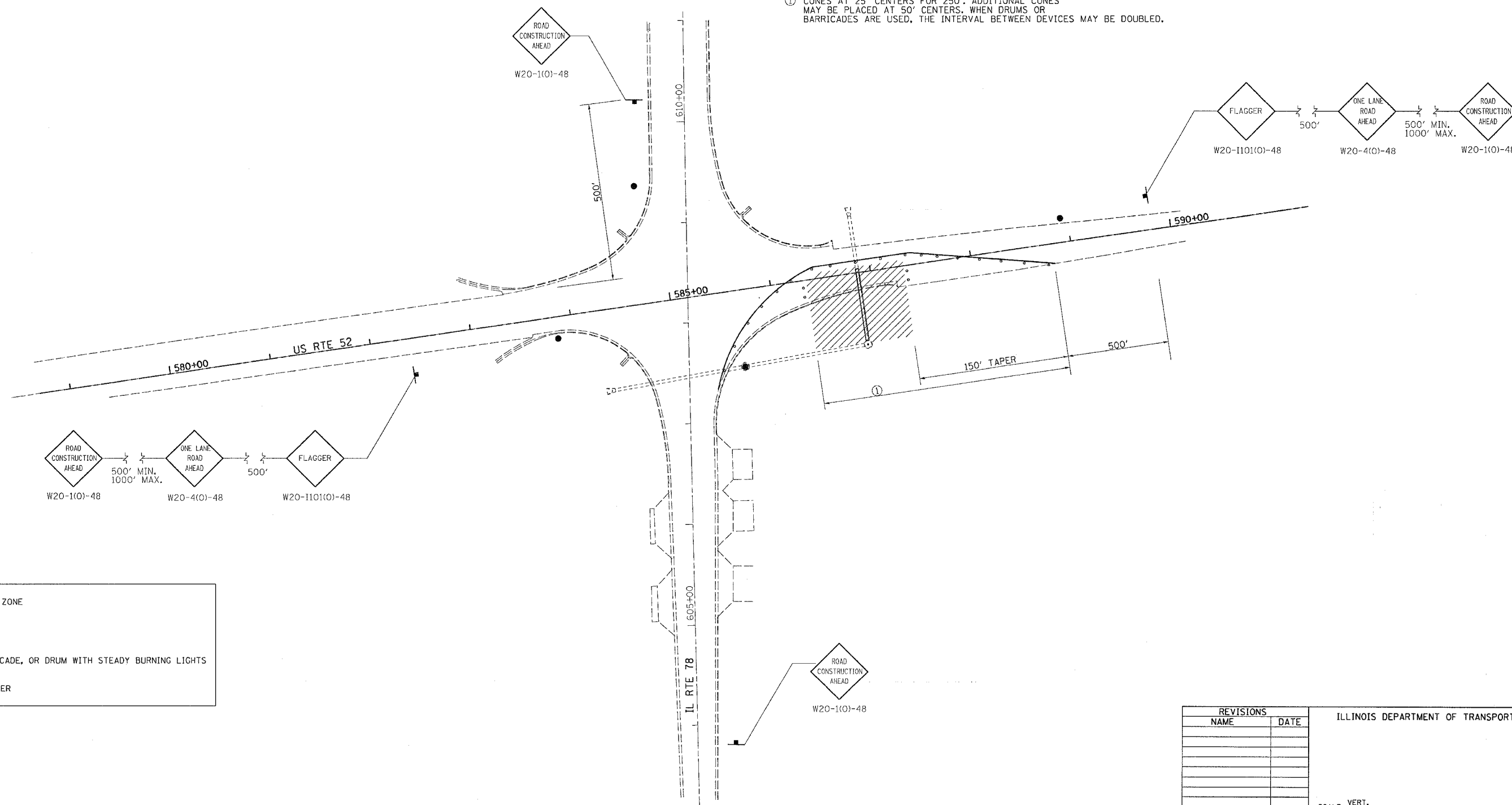
\* ROUTE 17 (US 52 / IL 64)  
 \*\* (1,2)RS & (3-1)RS-1

# STAGING 7A

1. USE STANDARD 701201-04 TO REMOVE HALF OF EXISTING CULVERT AT STA. 586+87.
2. REPLACE CULVERT FROM 4' LEFT OF CENTERLINE TO END.
3. PLACE PATCH.
4. PLACE END SECTION.
5. DUE SOME TEMPORARY GRADING FOR WATER TO FLOW.
6. PLACE TEMPORARY SEEDING.
7. GO TO STAGE 7B.



① CONES AT 25' CENTERS FOR 250'. ADDITIONAL CONES MAY BE PLACED AT 50' CENTERS. WHEN DRUMS OR BARRICADES ARE USED, THE INTERVAL BETWEEN DEVICES MAY BE DOUBLED.



	= WORK ZONE
	= SIGN
	= BARRICADE, OR DRUM WITH STEADY BURNING LIGHTS
	= FLAGGER

REVISIONS	
NAME	DATE

ILLINOIS DEPARTMENT OF TRANSPORTATION

SCALE: VERT. \_\_\_\_\_  
 HORIZ. \_\_\_\_\_

DATE \_\_\_\_\_

DRAWN BY \_\_\_\_\_  
 CHECKED BY \_\_\_\_\_

PLOT DATE = Fri, Mar 23 09:44:10 2007  
 FILE NAME = C:\pwork\64560\171\STG7A08.dgn  
 PLOT SCALE = 50.0000' / 1" /  
 USER NAME = hnsanche

## STAGING DETAILS