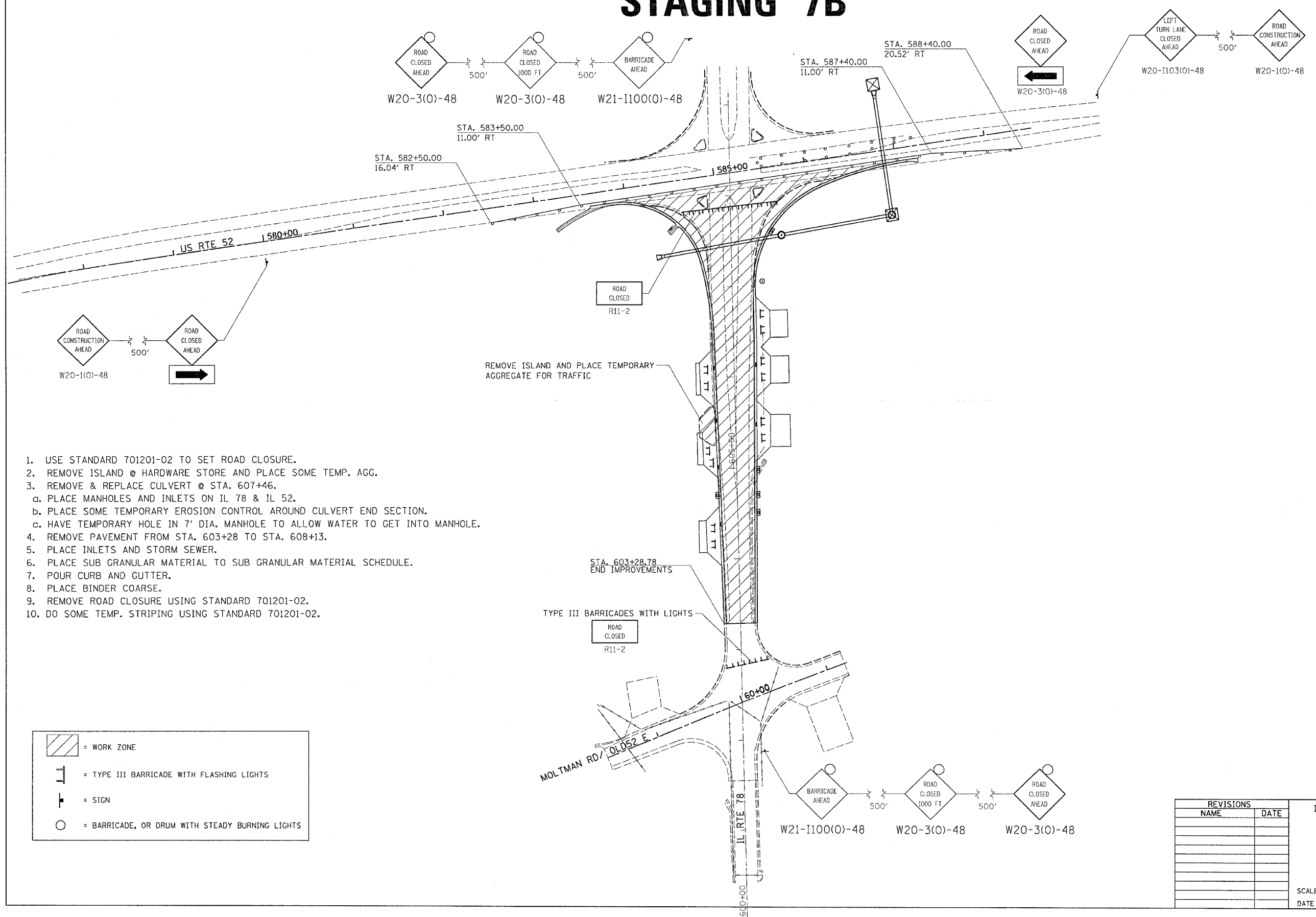


# STAGING 7B



1. USE STANDARD 701201-02 TO SET ROAD CLOSURE.
2. REMOVE ISLAND @ HARDWARE STORE AND PLACE SOME TEMP. AGG.
3. REMOVE & REPLACE CULVERT @ STA. 607+46.
  - a. PLACE MANHOLES AND INLETS ON IL 78 & IL 52.
  - b. PLACE SOME TEMPORARY EROSION CONTROL AROUND CULVERT END SECTION.
  - c. HAVE TEMPORARY HOLE IN 7' DIA. MANHOLE TO ALLOW WATER TO GET INTO MANHOLE.
4. REMOVE PAVEMENT FROM STA. 603+28 TO STA. 608+13.
5. PLACE INLETS AND STORM SEWER.
6. PLACE SUB GRANULAR MATERIAL TO SUB GRANULAR MATERIAL SCHEDULE.
7. POUR CURB AND GUTTER.
8. PLACE BINDER COARSE.
9. REMOVE ROAD CLOSURE USING STANDARD 701201-02.
10. DO SOME TEMP. STRIPING USING STANDARD 701201-02.

	= WORK ZONE
	= TYPE III BARRICADE WITH FLASHING LIGHTS
	= SIGN
	= BARRICADE, OR DRUM WITH STEADY BURNING LIGHTS

REVISIONS		ILLINOIS DEPARTMENT OF TRANSPORTATION
NAME	DATE	
		SCALE: VERT. HORIZ. DATE: DRAWN BY CHECKED BY

PLOT DATE = Fri Mar 23 09:04:11 2007  
 FILE NAME = C:\projects\2507406\d07408\stg7b.dgn  
 USER NAME = jhennings