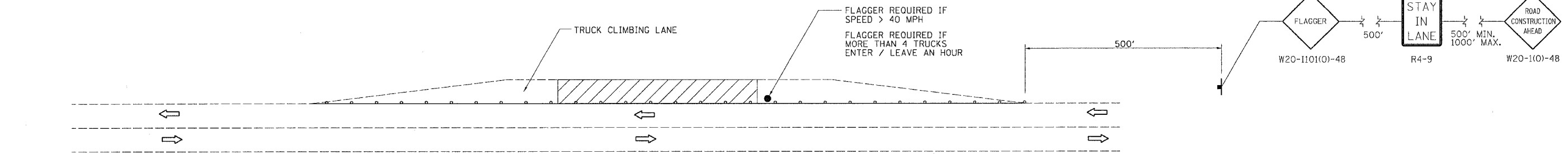


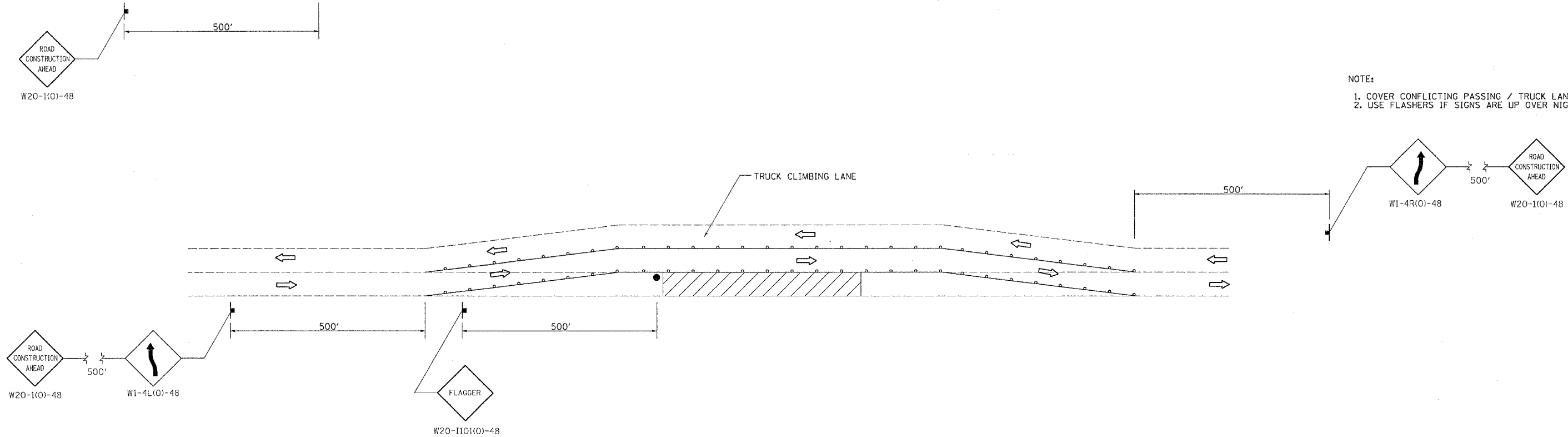
TRUCK CLIMBING LANES

F.A.P. RTE.	SECTION	COUNTY	TOTAL SHEETS	SHEET NO.
17	**	CARROLL	548	174
STA.		TO STA.		
FED. ROAD DIST. NO.		ILLINOIS	FED. AID PROJECT	
* ROUTE 17 (US 52 / IL 64)				
** (1,2)RS & (3-1)RS-1				

NOTE:
 1. COVER CONFLICTING PASSING / TRUCK LANE SIGNS
 2. USE FLASHERS IF SIGNS ARE UP OVER NIGHT



NOTE:
 1. COVER CONFLICTING PASSING / TRUCK LANE SIGNS
 2. USE FLASHERS IF SIGNS ARE UP OVER NIGHT



- = WORK ZONE
- = SIGN
- = BARRICADE, OR DRUM WITH STEADY BURNING LIGHTS
- = FLAGGER

REVISIONS		ILLINOIS DEPARTMENT OF TRANSPORTATION
NAME	DATE	
		SCALE: VERT. HORIZ. DATE: DRAWN BY: CHECKED BY:

PLOT DATE = Fri Mar 23 08:04:12 2007
 PLOT SCALE = 50:0000
 USER NAME = harsenka