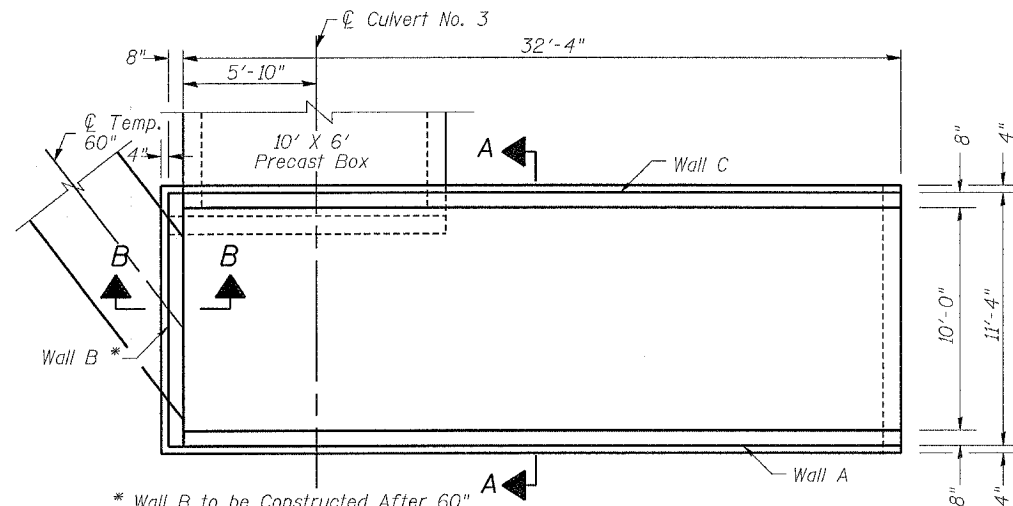
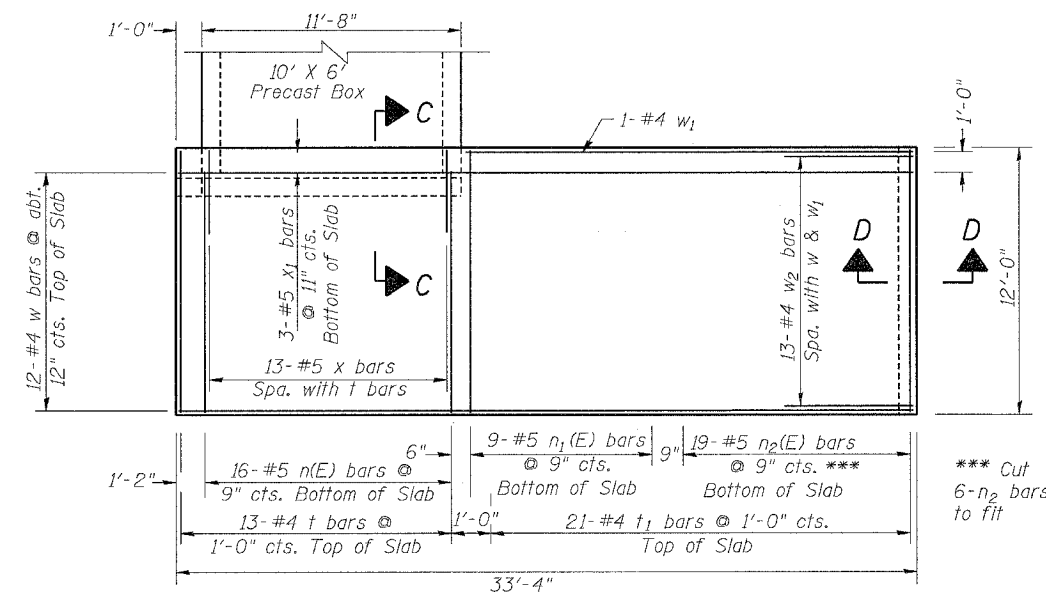


F.A.P. RTE.	SECTION	COUNTY	TOTAL SHEETS	SHEET NO.
**	**	CARROLL	548	182
STA.		TO STA.		
FED. ROAD DIST. NO.		ILLINOIS FED. AID PROJECT		
* ROUTE 17 (US 52 / IL 64)				
** (1,2)RS & (3,1)RS-1				



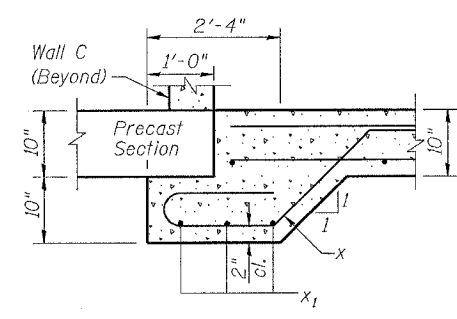
\* Wall B to be Constructed After 60" Temporary Pipe is Removed

**SPECIAL END SECTION NO. 1 - PLAN**

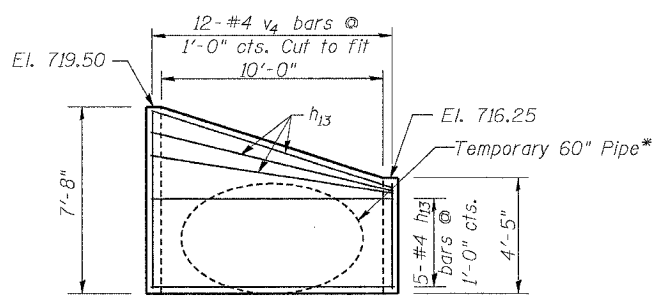


**BOTTOM SLAB**

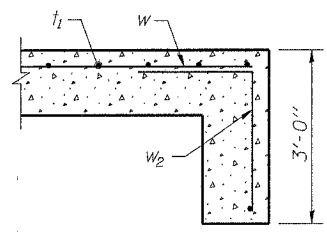
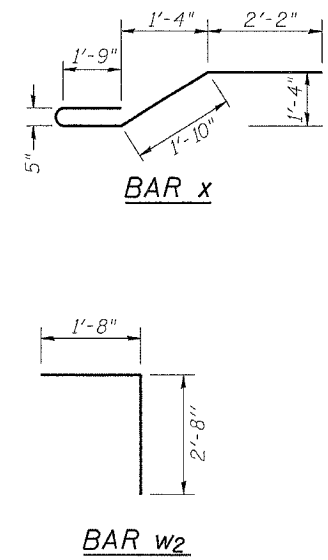
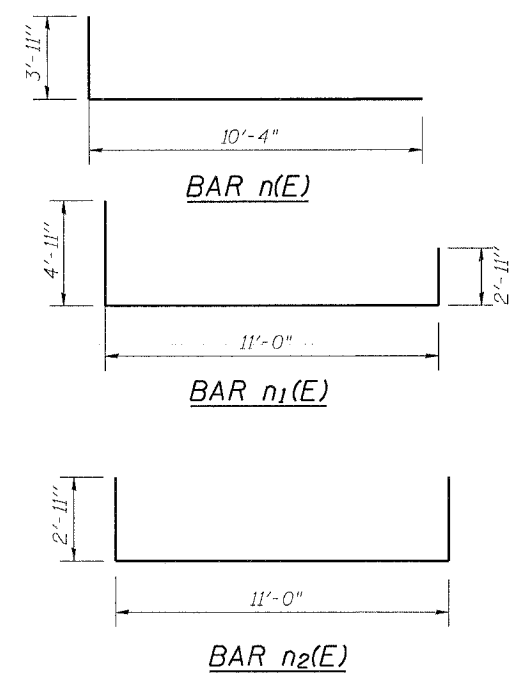
\*\*\* Cut 6-n2 bars to fit



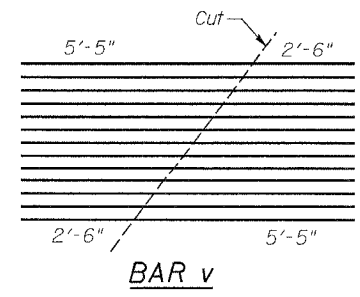
**SECTION C-C**



**WALL B\* (OUTSIDE FACE)**



**SECTION D-D**



**BAR v**

**NOTES**

- Reinforcement bars designated (E) shall be epoxy coated.
- All construction joints shall be bonded.
- Bars indicated thus 4 x 2 - #4 indicates 4 lines of bars with 2 lengths per line.
- For elevations of Wall A & C as well as sections A-A and B-B, see next sheet.

**BILL OF MATERIAL**

Bar	No.	Size	Length	Shape
h	8	#4	17'-6"	
h1	1	#4	14'-9"	
h2	1	#4	6'-9"	
h3	1	#4	4'-5"	
h4	1	#4	8'-4"	
h5	1	#4	14'-5"	
h6	8	#4	11'-0"	
h7	1	#4	10'-9"	
h8	1	#4	7'-8"	
h9	1	#4	4'-8"	
h10	1	#4	13'-9"	
h11	1	#4	12'-10"	
h12	1	#4	20'-11"	
h13	8	#4	11'-0"	
h14	1	#4	11'-5"	
n(E)	16	#5	14'-3"	
n1(E)	9	#5	18'-10"	
n2(E)	19	#5	16'-10"	
t	13	#4	10'-8"	
t1	21	#4	11'-8"	
v	13	#5	7'-11"	
v1	18	#5	5'-5"	
v2	5	#5	4'-4"	
v3	8	#5	3'-1"	
v4	12	#5	7'-4"	
w	12	#4	33'-0"	
w1	1	#4	20'-4"	
w2	13	#4	4'-4"	
x	13	#5	8'-2"	
x1	3	#5	12'-4"	
Concrete Box Culverts	Cu. Yd.		20.8	
Reinforcement Bars, Epoxy Coated	Pound		749	
Reinforcement Bars	Pound		1375	

**SPECIAL END SECTION NO. 1  
US RTE 52 / IL RTE 64  
F.A.P. RTE 17 SECTION (1,2)RS & (3-1)RS-1  
CARROLL COUNTY  
STA. 1001+58 (QUARRY RD.)**