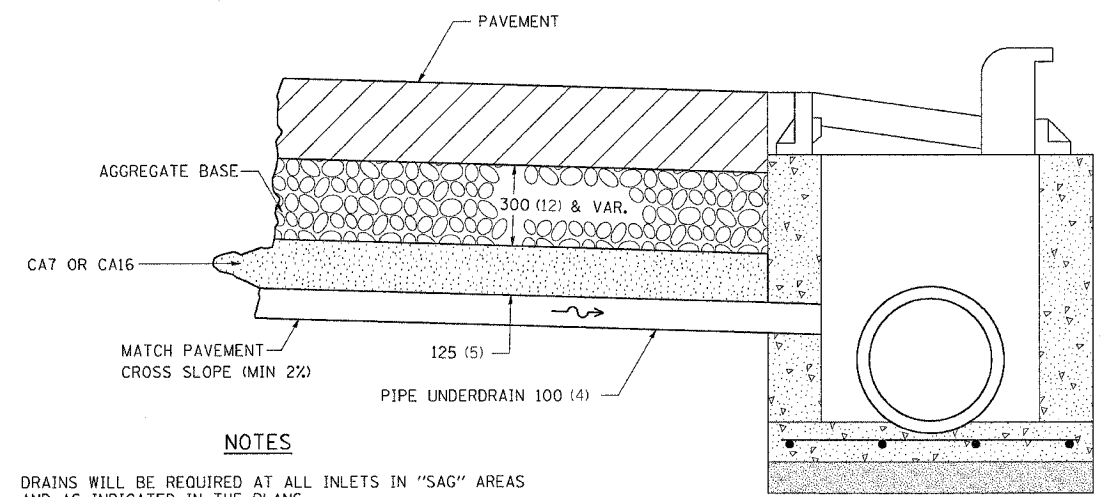


F.A.P. RTE.	SECTION	COUNTY	TOTAL SHEETS	SHEET NO.
*	**	CARROLL	548	231
STA.		TO STA.		
FED. ROAD DIST. NO.		ILLINOIS FED. AID PROJECT		
• ROUTE 17 (US 52 / IL 64) •• (1,2)RS & (3,1)RS-1				

# DRAIN FOR AGGREGATE BASES IN URBAN AREAS



### NOTES

DRAINS WILL BE REQUIRED AT ALL INLETS IN "SAG" AREAS AND AS INDICATED IN THE PLANS.

THIS WORK SHALL BE COMPLETED ACCORDING TO SECTION 601 OF THE STANDARD SPECIFICATIONS.

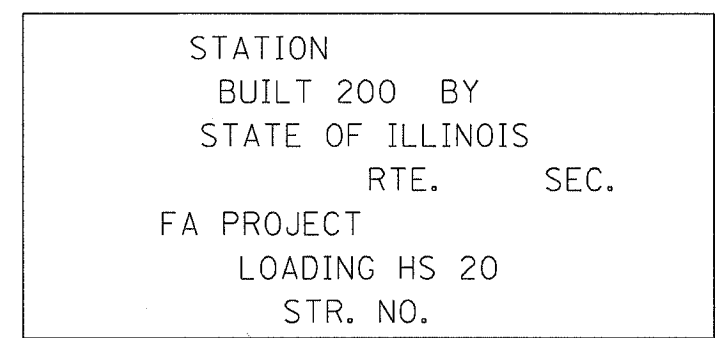
THIS WORK WILL BE PAID FOR AT THE CONTRACT UNIT PRICE PER METER (FOOT) FOR PIPE UNDERDRAINS OF THE DIAMETER SPECIFIED WHICH PRICE SHALL INCLUDE THE CAT OR CA16 AND THE CONNECTION TO THE INLET.

ALL DIMENSIONS ARE IN MILLIMETERS (INCHES) UNLESS OTHERWISE NOTED.

**DRAIN FOR AGGREGATE BASES IN URBAN AREAS 88.4**

REVISED 4-7-99

# LETTERING FOR NAME PLATE



ALL DIMENSIONS ARE IN MILLIMETERS (INCHES) UNLESS OTHERWISE NOTED.

**LETTERING FOR NAME PLATE 89.4**

REVISED 10-15-04

# TREE REPLACEMENT SCHEDULE

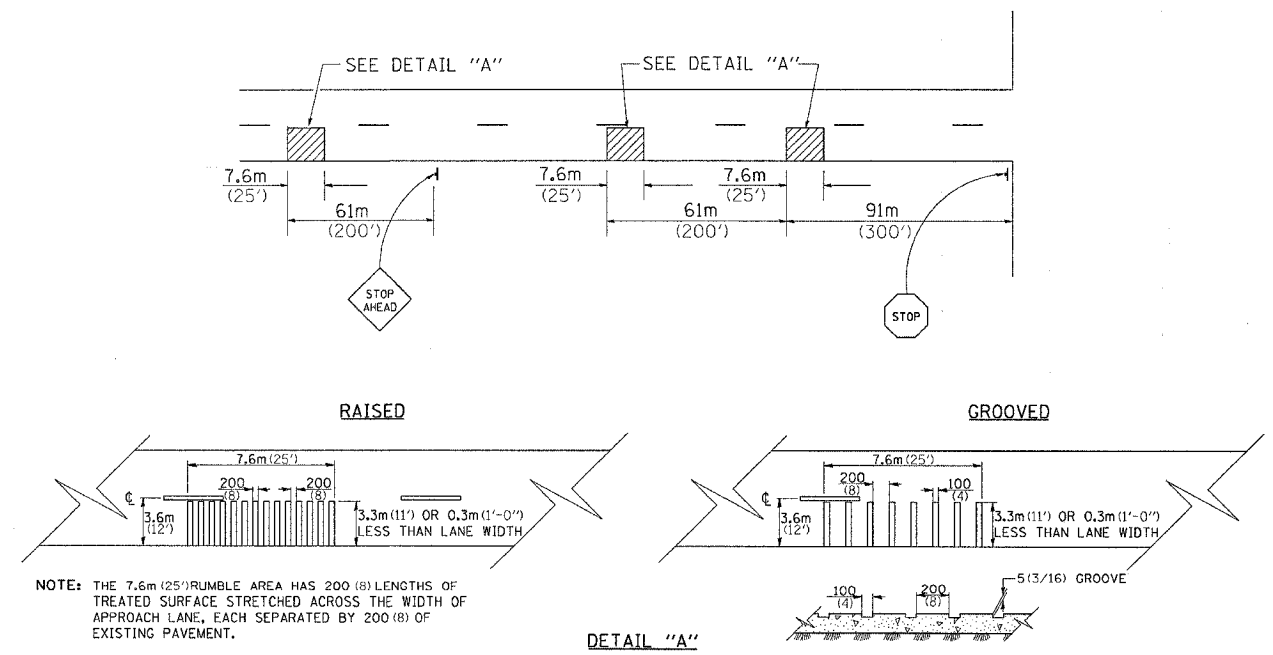
CODE NUMBER	SCIENTIFIC NAME	COMMON NAME	SIZE	UNIT	QUANTITY
A2001714	ACER SACCHARUM	SUGAR MAPLE	1-3/4" CALIPER, BALLED & BURLAPPED	EACH	40
A2002914	CELTIS OCCIDENTALIS	HACKBERRY	1-3/4" CALIPER, BALLED & BURLAPPED	EACH	40
A2006514	QUERCUS BICOLOR	SWAMP WHITE OAK	1-3/4" CALIPER, BALLED & BURLAPPED	EACH	40
A2006714	QUERCUS MACROCARPA	BUR OAK	1-3/4" CALIPER, BALLED & BURLAPPED	EACH	40
A2007114	QUERCUS RUBRA	RED OAK	1-3/4" CALIPER, BALLED & BURLAPPED	EACH	40
A2007814	TILIA AMERICANA	AMERICAN LINDEN/BASSWOOD	1-3/4" CALIPER, BALLED & BURLAPPED	EACH	40
B2000562	AMELANCHIER CANADENSIS	SHADBLOW SERVICEBERRY	4' HEIGHT, SHRUB FORM, BALLED & BURLAPPED	EACH	75
B2002614	MALUS ADAMS	ADAM'S CRABAPPLE	1-3/4" CALIPER, TREE FORM, BALLED & BURLAPPED	EACH	25
B2004814	MALUS SARGENTII	SARGENT CRABAPPLE	1-3/4" CALIPER, TREE FORM, BALLED & BURLAPPED	EACH	20
B2005214	MALUS SUTYZAM	SUGAR TYME CRABAPPLE	1-3/4" CALIPER, TREE FORM, BALLED & BURLAPPED	EACH	25
C2001536	CORNUS RACEMOSA	GREY DOGWOOD	3' HEIGHT, BALLED & BURLAPPED	EACH	55
C2012436	VIBURNUM LENTAGO	NANNYBERRY VIBURNUM	3' HEIGHT, BALLED & BURLAPPED	EACH	50
D2002972	PINUS STROBES	EASTERN WHITE PINE	6' HEIGHT, BALLED & BURLAPPED	EACH	100

ALL DIMENSIONS ARE IN MILLIMETERS (INCHES) UNLESS OTHERWISE NOTED.

**TREE REPLACEMENT SCHEDULE 90.4**

REVISED 8-10-05

# RUMBLE RESURFACING



DETAIL "A"

ALL DIMENSIONS ARE IN MILLIMETERS (INCHES) UNLESS OTHERWISE NOTED.

**RUMBLE RESURFACING 91.4**

REVISED 2-16-88

PLOT DATE: 11/15/05  
 FILE NAME: 11/15/05 11:45:12 2087.dgn  
 PLOT SCALE: 1/8" = 1'-0"  
 REFERENCE: