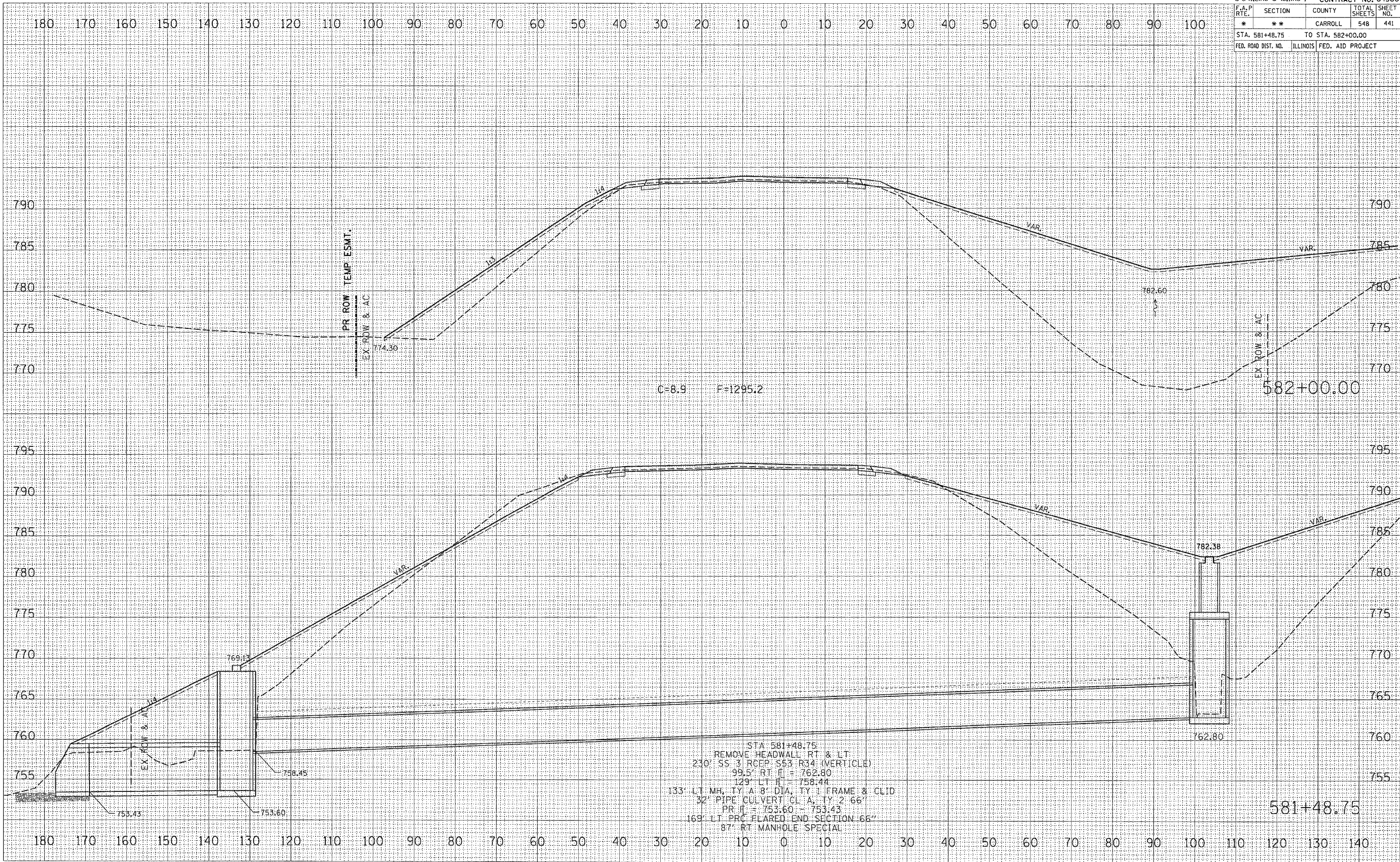


* ROUTE 17 (US 52 / IL 64)				
** (1,2)RS & (3,1)RS-1 CONTRACT NO. 64560				
F.A.P. RTE.	SECTION	COUNTY	TOTAL SHEETS	SHEET NO.
*	**	CARROLL	548	441
STA. 581+48.75		TO STA. 582+00.00		
FED. ROAD DIST. NO.		ILLINOIS FED. AID PROJECT		



C=8.9 F=1295.2

STA 581+48.75  
 REMOVE HEADWALL RT & LT  
 230' SS 3 RCEP S53 R34 (VERTICLE)  
 99.5' RT II = 762.80  
 129' LT II = 758.44  
 133' LT MH, TY A 8' DIA, TY I FRAME & CLID  
 32" PIPE CULVERT CL A, TY 2 66"  
 PR II = 753.60 - 753.43  
 169' LT PRC FLARED END SECTION 66"  
 87' RT MANHOLE SPECIAL

DATE	
BY	
NO.	
FINAL SURVEY	SURVEYED
NOTE BOOK	PLOTTED
REVISIONS	REPLATE
AREAS CHECKED	AREAS CHECKED

DATE	
BY	
NO.	
ORIGINAL SURVEY	SURVEYED
NOTE BOOK	PLOTTED
REVISIONS	REPLATE
AREAS CHECKED	AREAS CHECKED

PLOT DATE = Thu Mar 22 14:51:17 2007  
 PLOT SCALE = 1/4" = 100'  
 USER NAME = hnsa@ms