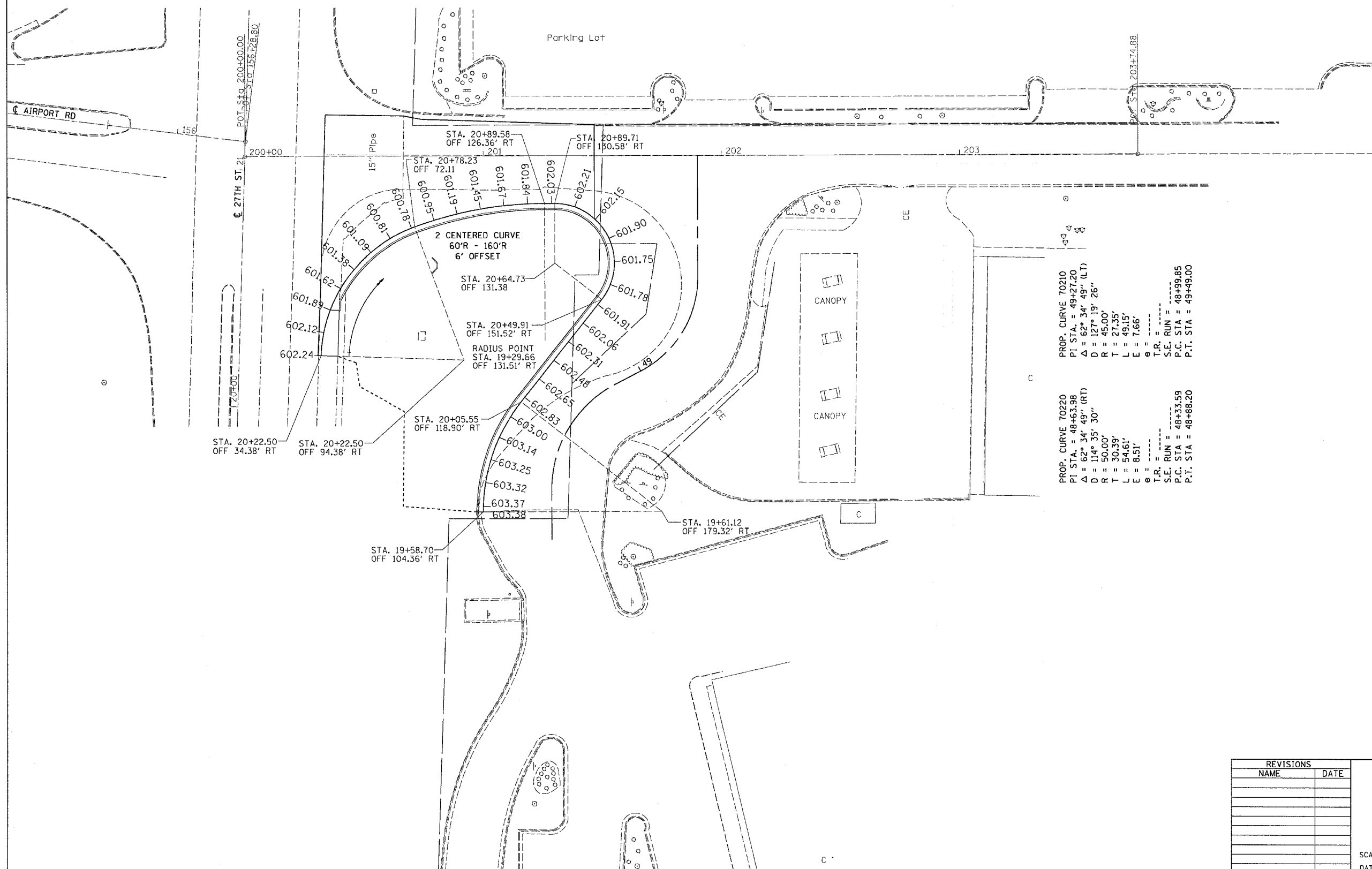


F.A.U. RTE.	SECTION	COUNTY	TOTAL SHEETS	SHEET NO.
5789	(33&40)-1-FR	ROCK ISLAND	30	16
STA.		TO STA.		
FED. ROAD DIST. NO.		ILLINOIS	FED. AID PROJECT	

ELEVATION DETAIL



PROP. CURVE 70210
 PI STA. = 49+27.20
 $\Delta = 62^\circ 34' 49''$ (LT)
 $D = 127^\circ 19' 26''$
 $R = 45.00'$
 $T = 27.35'$
 $L = 49.15'$
 $E = 7.66'$
 $\theta = \dots$
 $T.R. = \dots$
 $S.E. RUN = \dots$
 $P.C. STA = 48+99.85$
 $P.T. STA = 49+49.00$

PROP. CURVE 70220
 PI STA. = 48+63.98
 $\Delta = 62^\circ 34' 49''$ (RT)
 $D = 114^\circ 35' 30''$
 $R = 50.00'$
 $T = 30.39'$
 $L = 54.61'$
 $E = 8.51'$
 $\theta = \dots$
 $T.R. = \dots$
 $S.E. RUN = \dots$
 $P.C. STA = 48+33.59$
 $P.T. STA = 48+88.20$

PLOT DATE = Wed Mar 21 09:28:01 2007
 PLOT SCALE = 20.0000' / 1" IN.
 USER NAME = mag111

REVISIONS	
NAME	DATE

ILLINOIS DEPARTMENT OF TRANSPORTATION

SCALE: VERT. _____
 HORIZ. _____
 DATE _____

DRAWN BY _____
 CHECKED BY _____