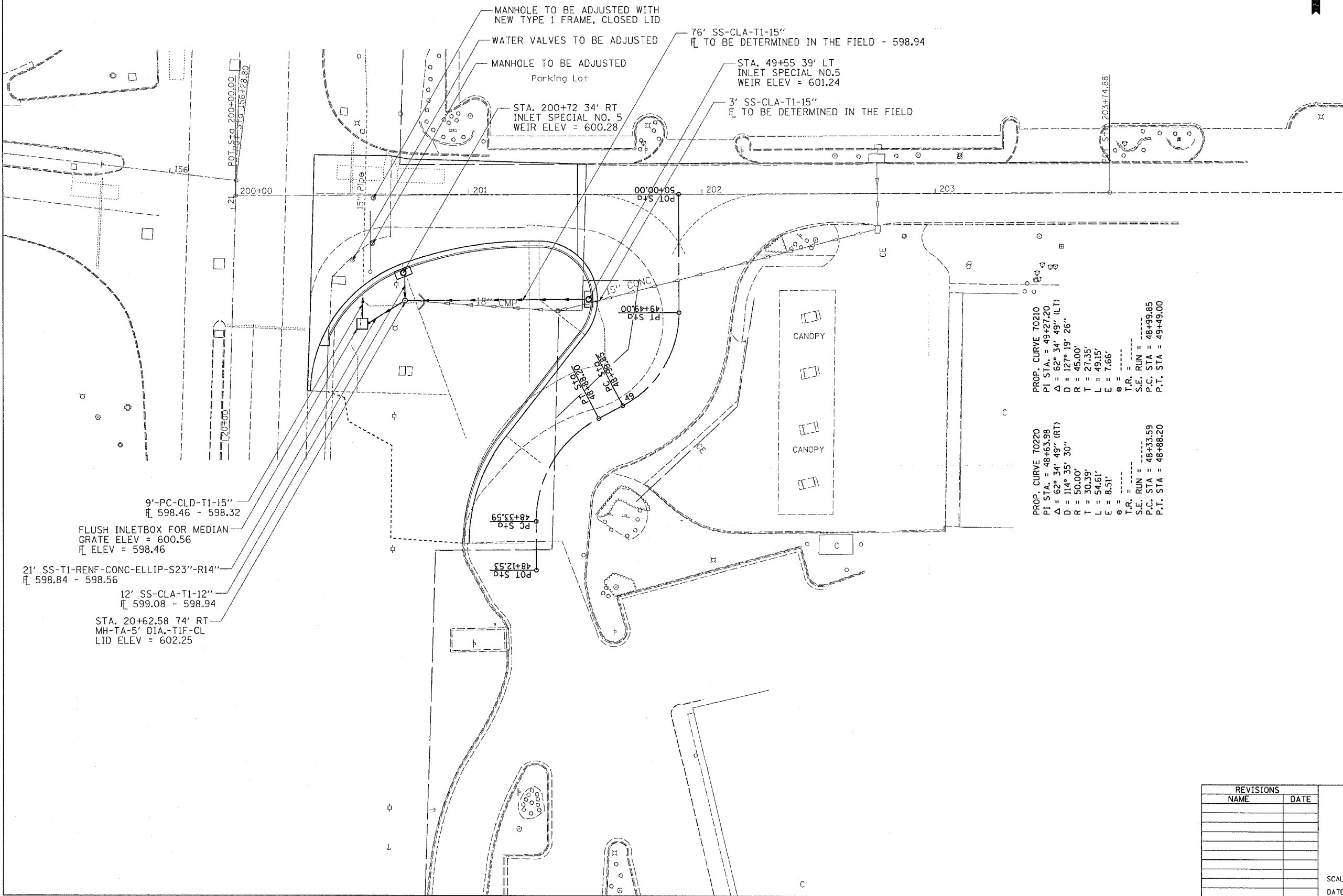


F.A.U. RTE.	SECTION	COUNTY	TOTAL SHEETS	SHEET NO.
5789	(33&40)-1-FR	ROCK ISLAND	30	17
STA.		TO STA.		
FED. ROAD DIST. NO.		ILLINOIS FED. AID PROJECT		

DRAINAGE DETAILS



PROP. CURVE 70210
 PI STA. = 49+27.20
 Δ = 62° 34' 49" (LT)
 D = 127° 19' 26"
 R = 45.00'
 T = 27.35'
 L = 49.15'
 E = 7.66'
 θ = -----
 T.R. = -----
 S.E. RUN = -----
 P.C. STA = 48+99.85
 P.T. STA = 49+49.00

PROP. CURVE 70220
 PI STA. = 48+63.98
 Δ = 62° 34' 49" (RT)
 D = 114° 35' 30"
 R = 50.00'
 T = 30.39'
 L = 54.61'
 E = 8.51'
 θ = -----
 T.R. = -----
 S.E. RUN = -----
 P.C. STA = 48+33.59
 P.T. STA = 48+88.20

9'-PC-CLD-T1-15"
 ELEV = 598.46 - 598.32
 FLUSH INLETBOX FOR MEDIAN
 GRATE ELEV = 600.56
 ELEV = 598.46
 21' SS-T1-RENF-CONC-ELLIP-S23'-R14"
 ELEV = 598.84 - 598.56
 12' SS-CLA-T1-12"
 ELEV = 599.08 - 598.94
 STA. 20+62.58 74' RT
 MH-TA-5' DIA.-TIF-CL
 LID ELEV = 602.25

PLOT DATE = Wed Mar 21 09:52:05 2007
 FILE NAME = I:\2006\305\305.dwg
 PLOT SCALE = 20.0000 / 1 IN.
 USER NAME = mgj111

REVISIONS	
NAME	DATE

ILLINOIS DEPARTMENT OF TRANSPORTATION

SCALE: VERT.
 HORIZ.
 DATE

DRAWN BY
 CHECKED BY