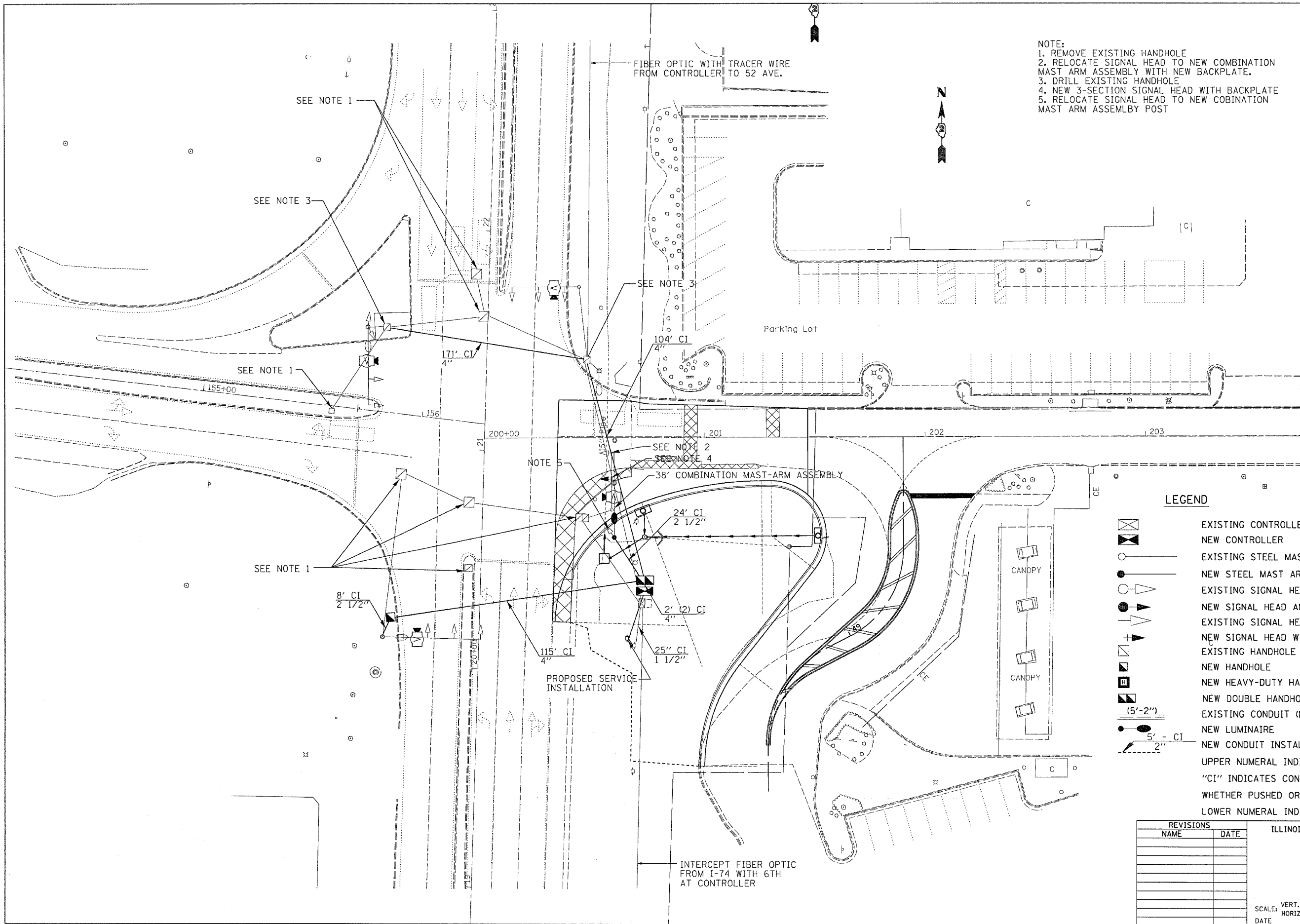


F.A.U. RTE.	SECTION	COUNTY	TOTAL SHEETS	SHEET NO.
5789	(33&40)-1-FR	ROCK ISLAND	30	20
STA.	TO STA.			
FED. ROAD DIST. NO.	ILLINOIS	FED. AID PROJECT		

- NOTE:
1. REMOVE EXISTING HANDHOLE
 2. RELOCATE SIGNAL HEAD TO NEW COMBINATION MAST ARM ASSEMBLY WITH NEW BACKPLATE.
 3. DRILL EXISTING HANDHOLE
 4. NEW 3-SECTION SIGNAL HEAD WITH BACKPLATE
 5. RELOCATE SIGNAL HEAD TO NEW COBINATION MAST ARM ASSEMBLY POST



LEGEND

- EXISTING CONTROLLER
- NEW CONTROLLER
- EXISTING STEEL MAST ARM ASSEMBLY AND POLE
- NEW STEEL MAST ARM ASSEMBLY AND POLE
- EXISTING SIGNAL HEAD AND POST
- NEW SIGNAL HEAD AND POST
- EXISTING SIGNAL HEAD
- NEW SIGNAL HEAD WITH BACKPLATE
- EXISTING HANDHOLE
- NEW HANDHOLE
- NEW HEAVY-DUTY HANDHOLE
- NEW DOUBLE HANDHOLE
- EXISTING CONDUIT (LENGTH AND SIZE)
- NEW LUMINAIRE
- NEW CONDUIT INSTALLED, NON-METALLIC
- UPPER NUMERAL INDICATES LENGTH
- "CI" INDICATES CONDUIT INSTALLED, NON-METALLIC
- WHETHER PUSHED OR TRENCHED
- LOWER NUMERAL INDICATES SIZE OF CONDUIT

REVISIONS	
NAME	DATE

ILLINOIS DEPARTMENT OF TRANSPORTATION

SCALE: VERT. / HORIZ. / DATE

DRAWN BY / CHECKED BY

PLOT DATE = Wed Mar 21 09:24:05 2007
 FILE NAME = s:\projects\33&40\330\330\330.dgn
 PLOT SCALE = 28.0000 / IN.
 USER NAME = meg111