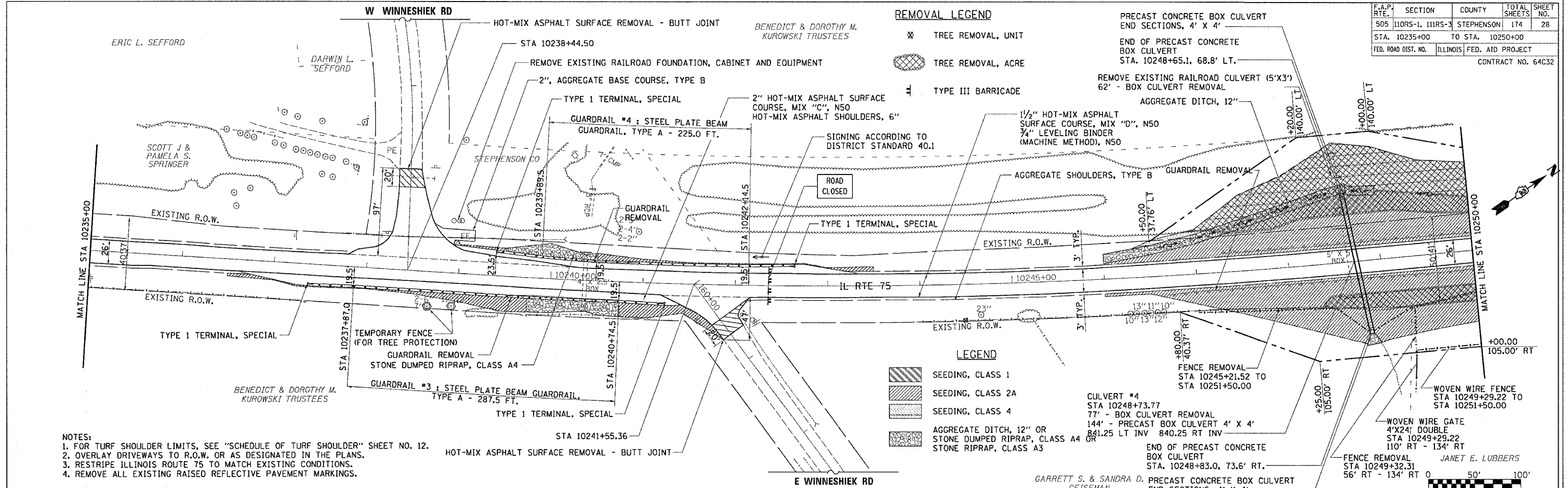


F.A.P. RTE.	SECTION	COUNTY	TOTAL SHEETS	SHEET NO.
505	110RS-1, 111RS-3	STEPHENSON	174	28
STA. 10235+00 TO STA. 10250+00				
FED. ROAD DIST. NO. ILLINOIS		FED. AID PROJECT		
CONTRACT NO. 64C32				

DESIGNED BY	DATE
PLANNED BY	
NOTED BY	
CHECKED BY	
DATE	

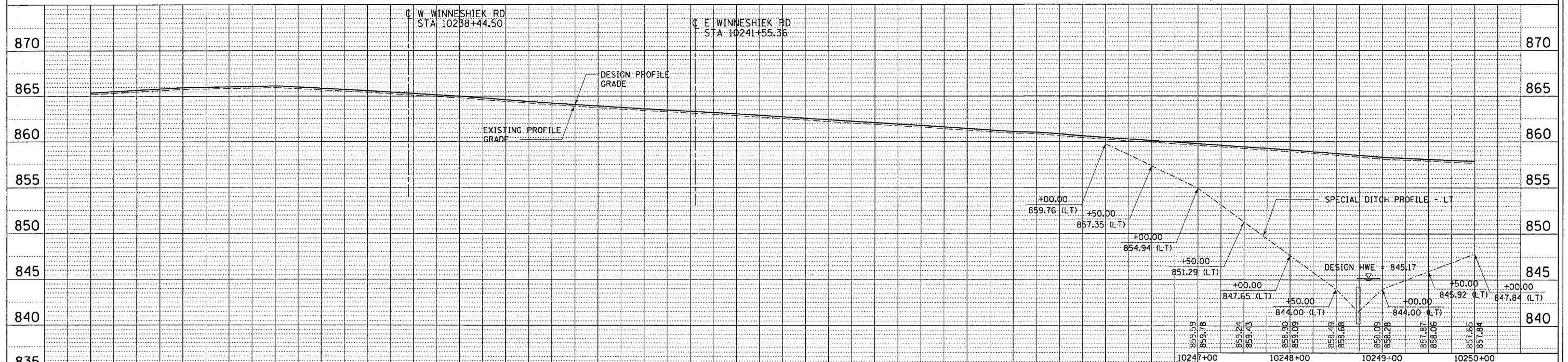
DESIGNED BY	DATE
PLANNED BY	
NOTED BY	
CHECKED BY	
DATE	



- NOTES:**
- FOR TURF SHOULDER LIMITS, SEE "SCHEDULE OF TURF SHOULDER" SHEET NO. 12.
 - OVERLAY DRIVEWAYS TO R.O.W. OR AS DESIGNATED IN THE PLANS.
 - RESTRIP ILLINOIS ROUTE 75 TO MATCH EXISTING CONDITIONS.
 - REMOVE ALL EXISTING RAISED REFLECTIVE PAVEMENT MARKINGS.

- REMOVAL LEGEND**
- ☒ TREE REMOVAL, UNIT
 - ☒ TREE REMOVAL, ACRE
 - ☒ TYPE III BARRICADE

- LEGEND**
- SEEDING, CLASS 1
 - SEEDING, CLASS 2A
 - SEEDING, CLASS 4
 - AGGREGATE DITCH, 12" OR STONE DUMPED RIPRAP, CLASS A4 OR STONE RIPRAP, CLASS A3



REVISIONS	
NAME	DATE

ILLINOIS DEPARTMENT OF TRANSPORTATION
 F.A.P. ROUTE 505 (IL 75)
ILLINOIS ROUTE 75
PLAN & PROFILE
STA 10235+00 TO 10250+00

SCALE: VERT. 1"=50'
 DATE: 12/20/06

DRAWN BY JMC
 CHECKED BY DWB

Tue Mar 28 10:28:41 2006 FILES