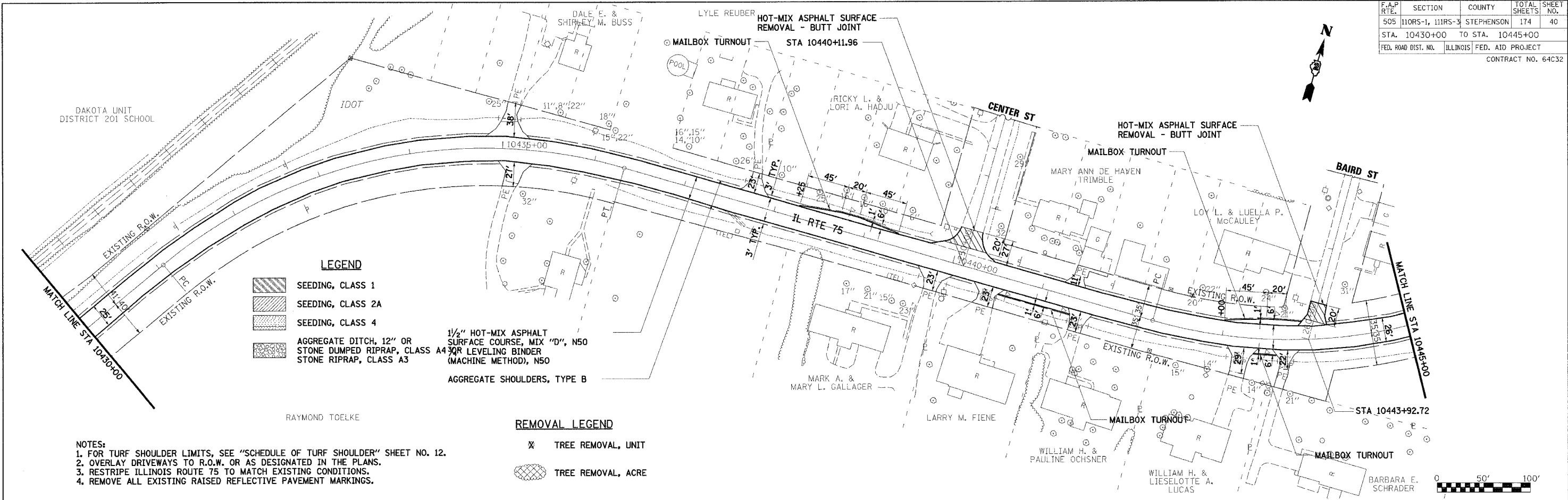


| | | | | |
|---|------------------|------------|--------------|-----------|
| F.A.P. RTE. | SECTION | COUNTY | TOTAL SHEETS | SHEET NO. |
| 505 | 110RS-1, 111RS-3 | STEPHENSON | 174 | 40 |
| STA. 10430+00 TO STA. 10445+00 | | | | |
| FED. ROAD DIST. NO. ILLINOIS FED. AID PROJECT | | | | |
| CONTRACT NO. 64C32 | | | | |



- LEGEND**
- SEEDING, CLASS 1
 - SEEDING, CLASS 2A
 - SEEDING, CLASS 4
 - AGGREGATE DITCH, 12" OR STONE DUMPED RIPRAP, CLASS A4 OR LEVELING BINDER (MACHINE METHOD), N50
 - STONE RIPRAP, CLASS A3
 - AGGREGATE SHOULDERS, TYPE B

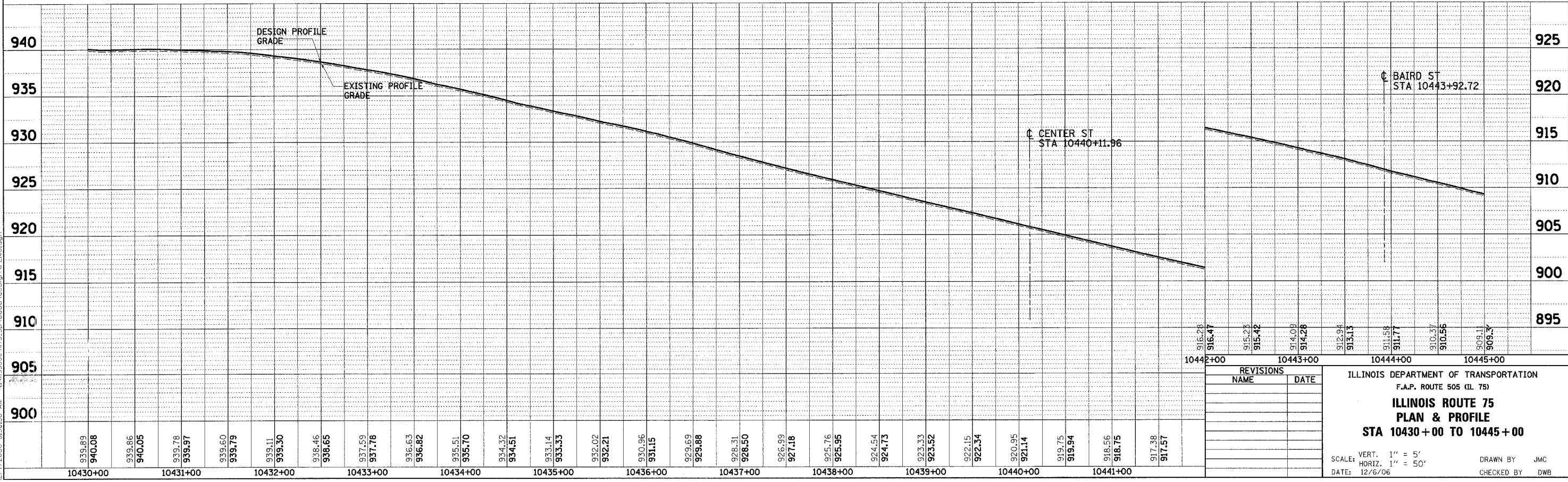
- REMOVAL LEGEND**
- TREE REMOVAL, UNIT
 - TREE REMOVAL, ACRE

NOTES:
 1. FOR TURF SHOULDER LIMITS, SEE "SCHEDULE OF TURF SHOULDER" SHEET NO. 12.
 2. OVERLAY DRIVEWAYS TO R.O.W. OR AS DESIGNATED IN THE PLANS.
 3. RESTRIPE ILLINOIS ROUTE 75 TO MATCH EXISTING CONDITIONS.
 4. REMOVE ALL EXISTING RAISED REFLECTIVE PAVEMENT MARKINGS.



| | | |
|-----------|---------|------|
| PLAN | REVISED | DATE |
| NOTE BOOK | BY | |
| NO. | | |

| | | |
|-----------|---------|------|
| PROFILE | REVISED | DATE |
| NOTE BOOK | BY | |
| NO. | | |



| REVISIONS | |
|-----------|------|
| NAME | DATE |
| | |
| | |
| | |
| | |
| | |

ILLINOIS DEPARTMENT OF TRANSPORTATION
 F.A.P. ROUTE 505 (IL 75)
ILLINOIS ROUTE 75
PLAN & PROFILE
STA 10430+00 TO 10445+00

SCALE: VERT. 1" = 5'
 HORIZ. 1" = 50'
 DATE: 12/6/06
 DRAWN BY: JMC
 CHECKED BY: DWB

I:\119500\1195\30\cadd\design\PLAN.dgn 2/7/2006 8:50:36 AM