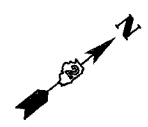
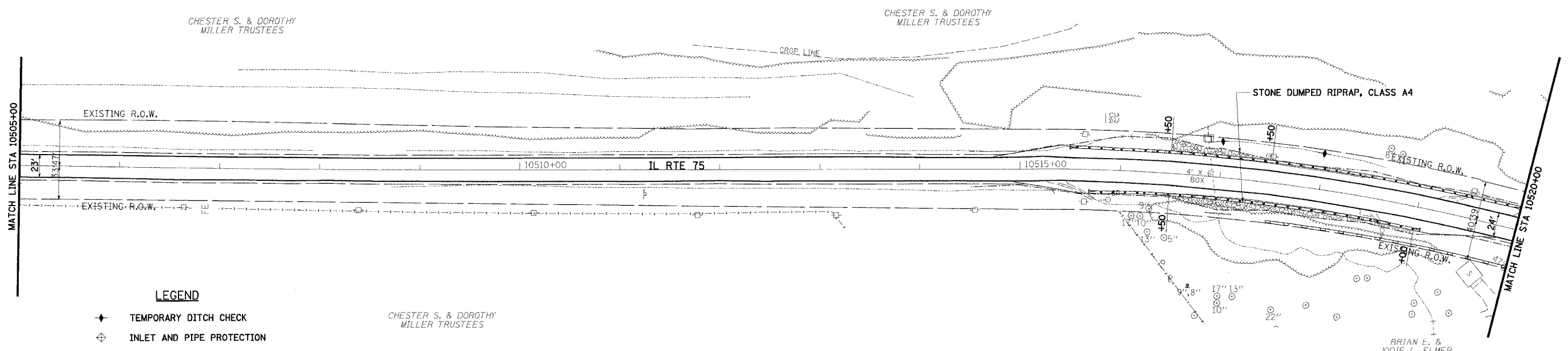
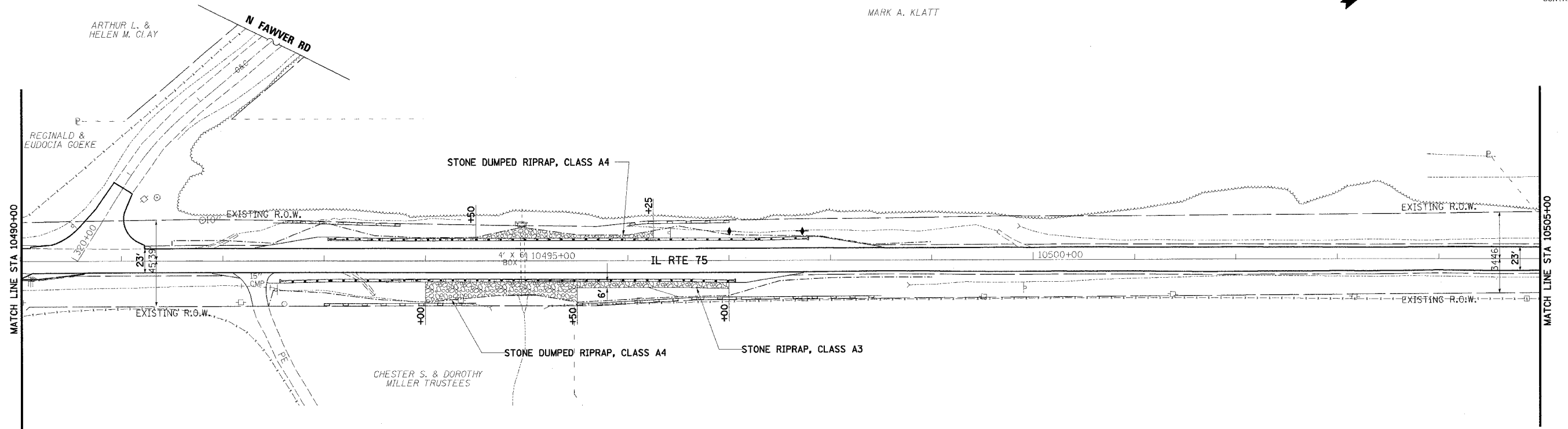


|                     |                  |                  |              |           |
|---------------------|------------------|------------------|--------------|-----------|
| F.A.P. RTE.         | SECTION          | COUNTY           | TOTAL SHEETS | SHEET NO. |
| 505                 | 110RS-1, 111RS-3 | STEPHENSON       | 174          | 70        |
| STA.                | 10490+00         | TO STA.          | 10520+00     |           |
| FED. ROAD DIST. NO. | ILLINOIS         | FED. AID PROJECT |              |           |
| CONTRACT NO. 64C32  |                  |                  |              |           |



MARK A. KLATT



- LEGEND**
- ◆ TEMPORARY DITCH CHECK
  - ⊕ INLET AND PIPE PROTECTION
  - PERIMETER EROSION BARRIER
  - ▨ AGGREGATE DITCH, 12" OR STONE DUMPED RIPRAP, CLASS A4 OR STONE RIPRAP, CLASS A3

| REVISIONS |      |
|-----------|------|
| NAME      | DATE |
|           |      |
|           |      |
|           |      |
|           |      |
|           |      |
|           |      |
|           |      |
|           |      |
|           |      |
|           |      |

ILLINOIS DEPARTMENT OF TRANSPORTATION  
 F.A.P. ROUTE 505 (IL 75)  
**ILLINOIS ROUTE 75**  
**EROSION CONTROL PLAN**  
**STA 10490+00 TO 10520+00**  
 SCALE: VERT. 1" = 50'  
 DATE: 12/6/06  
 DRAWN BY JMC  
 CHECKED BY DWB

12/7/2006 9:40:19 AM k:\1195800\1175\_3p\cadd\DESIGN\EROSION\_3P\_21.dgn