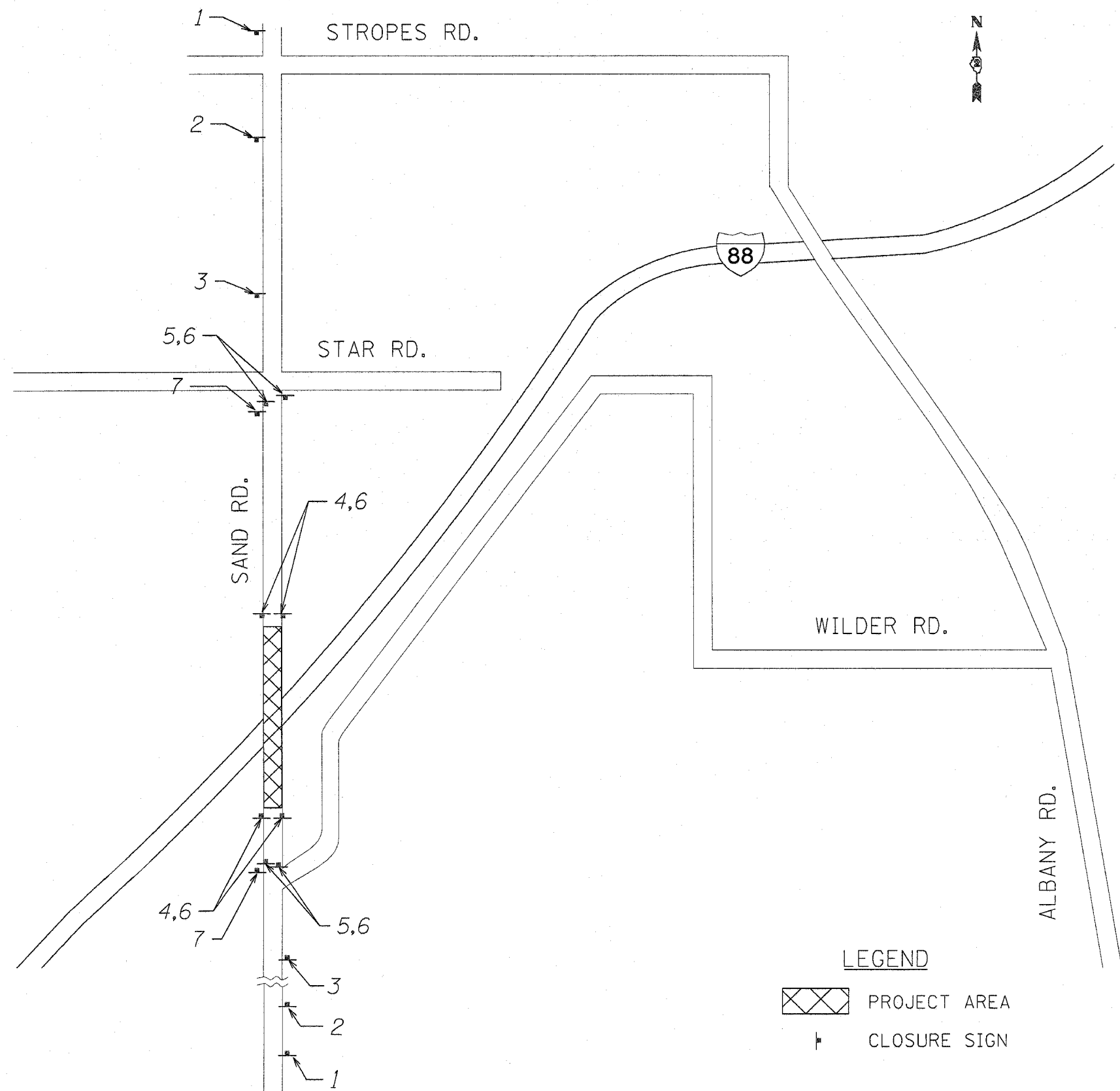


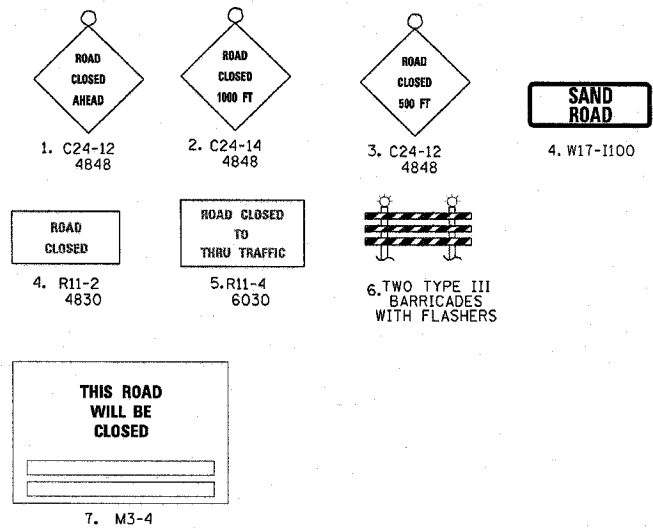
CONTRACT NO. 64D02

F.A.T. RTE.	SECTION	COUNTY	TOTAL SHEETS	SHEET NO.
88	(195-1HB-2)M	WHITESIDE	17	6
	STA. 44+17	TO STA. 55+10		
FED. AID PROJECT	ILLINOIS	FED. ROAD DIST. NO.		



**MAINTENANCE OF TRAFFIC**

1. THE DEPARTMENT SHALL BE NOTIFIED 72 HOURS PRIOR TO ROAD CLOSURE AND IMMEDIATELY AFTER THE ROAD HAS BEEN REOPENED.
2. WHITESIDE COUNTY SHALL BE NOTIFIED AT LEAST TWO WEEKS PRIOR TO CLOSING THE ROAD.
3. THE CONTRACTOR SHALL FURNISH, INSTALL, MAINTAIN AND REMOVE ALL TEMPORARY SIGN SUPPORTS. AFTER REMOVING THE SUPPORTS, THE CONTRACTOR SHALL FILL HOLES (IF ANY) AND RESTORE THE GROUND TO ITS ORIGINAL CONDITION AND ELEVATION. PLACING OF GRAVEL, SOD, OR SEED SHALL BE INCLUDED IN THE UNIT BID PRICE FOR "TRAFFIC CONTROL FOR ROAD CLOSURE".
4. ALL SIGNS, SUPPORTS AND POSITIONING SHALL BE IN ACCORDANCE WITH THE ILLINOIS MANUAL ON UNIFORM TRAFFIC CONTROL DEVICES, LATEST EDITION.
5. ALL WARNING SIGNS IN TEMPORARY TRAFFIC CONTROL ZONES SHALL HAVE A BLACK LEGEND ON AN ORANGE BACKGROUND, UNLESS OTHERWISE NOTED.
6. EACH TYPE III BARRICADE SHALL BE EQUIPPED WITH TWO FLASHING AMBER LIGHTS.
7. FOR STABILIZATION, ALL TYPE III BARRICADES SHALL HAVE A MINIMUM OF FOUR (4) SANDBAGS PER BARRICADE (ONE PER LEG).
8. THE CONTRACTOR SHALL ERECT SIGN NO. 7 AT LEAST 2 WEEKS IN ADVANCE OF THE CLOSURE.
9. ALL ENTRANCES ON THE CLOSED PORTION OF SAND ROAD SHALL BE OPEN FOR TRAFFIC DURING THE ENTIRE CONSTRUCTION PERIOD.
10. THE WORK SHALL BE PAID FOR AT THE LUMP SUM PRICE FOR "TRAFFIC CONTROL FOR ROAD CLOSURE"



**LEGEND**

-  PROJECT AREA
-  CLOSURE SIGN

REVISIONS	
NAME	DATE

ILLINOIS DEPARTMENT OF TRANSPORTATION  
 SAND ROAD (CH 21) BRIDGE OVER I-88  
 STRUCTURE NO: 098-0056  
 SECTION: (195-1HB-2)M  
 BRIDGE REHABILITATION  
 MOT PLAN  
 SCALE: NTS  
 DATE: 2/7/07  
 DRAWN BY: LT  
 CHECKED BY: PJ