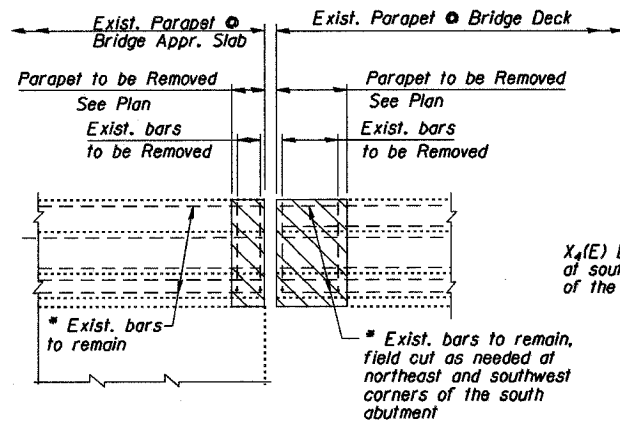
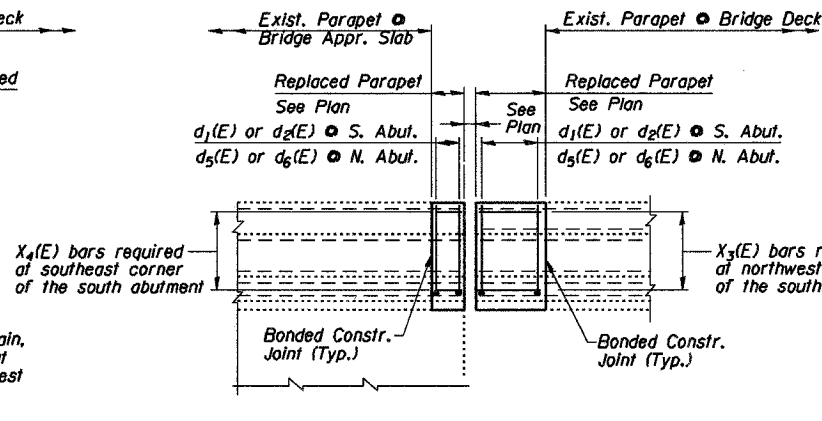


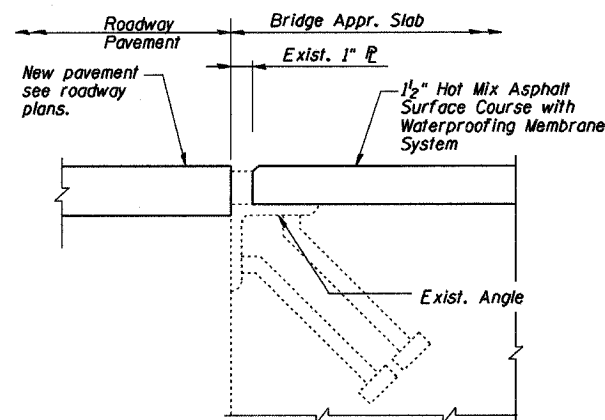
F.A.I. RTE.	SECTION	COUNTY	TOTAL SHEETS	SHEET NO.
88	(195-1HB-2)M	WHITESIDE	17	12
STA. 44+17 TO STA. 55+10				
FED. AID PROJECT ILLINOIS FED. ROAD DIST. NO.				



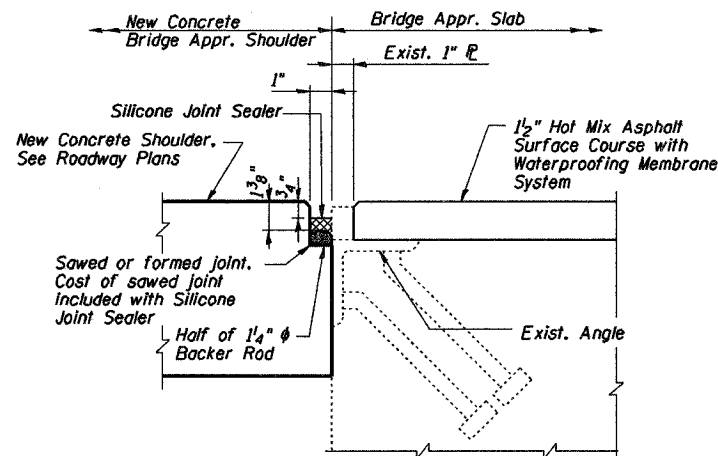
CONCRETE REMOVAL PARAPET ELEVATION



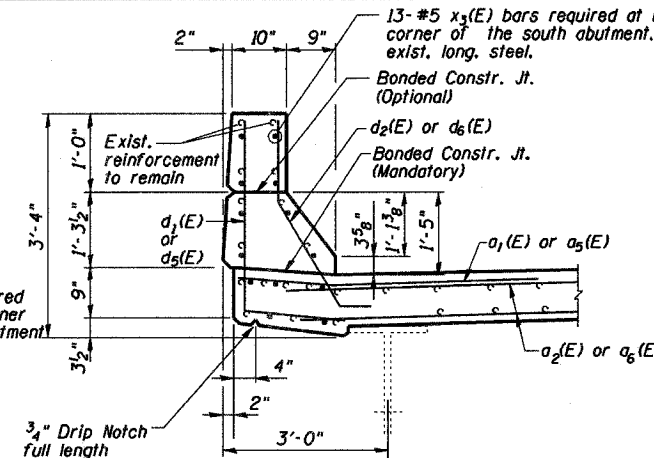
CONCRETE REPLACEMENT PARAPET ELEVATION



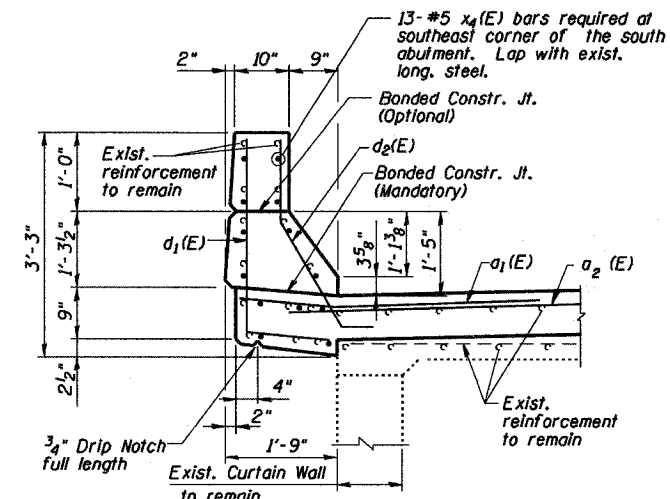
SECTION E-E



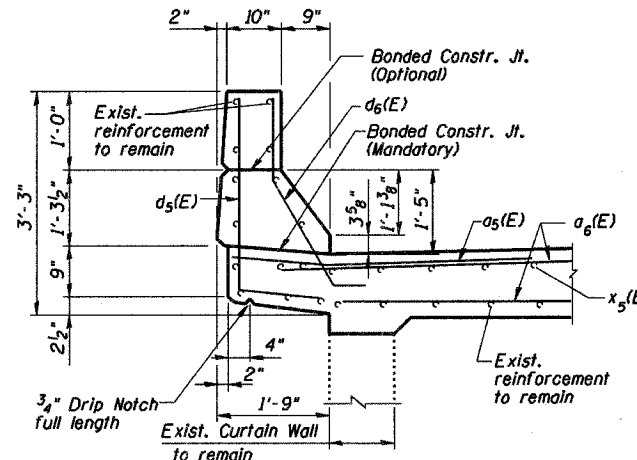
SECTION F-F



SECTION THRU BRIDGE DECK PARAPET



SECTION THRU APPROACH SLAB PARAPET S. ABUTMENT



SECTION THRU APPROACH SLAB PARAPET N. ABUTMENT

NOTES:

- \* Exist. reinforcement bars extending into the removal areas shall be cleaned, straightened and incorporated into the new construction. Any reinforcement bars that are damaged during concrete removal shall be replaced with approved bar splicer or anchorage system. Cost included with Concrete Removal or Deck Slab Repair (Full Depth, Type II).
- Cut exist. longitudinal reinforcement to clear drainage scupper.
- Hatched areas indicate concrete sections to be removed and replaced. Perimeters of concrete removal areas shall be saw cut 3/4" prior to the removal of concrete.

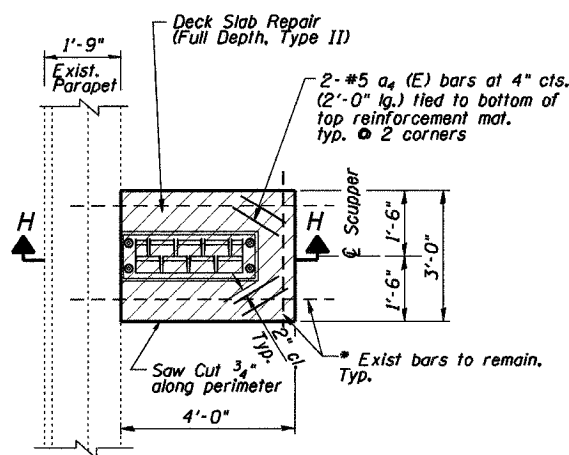
LEGEND

- Concrete Removal
- Deck Slab Repair (Full Depth, Type II)

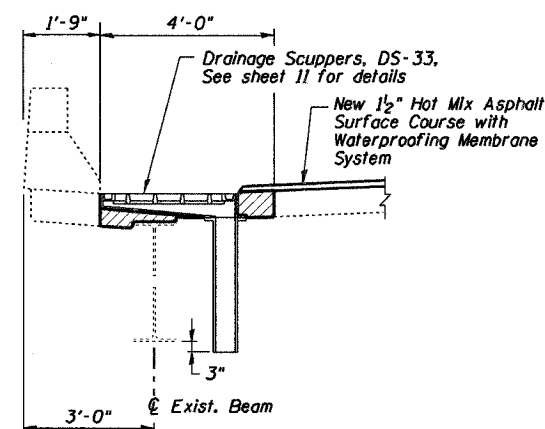
BILL OF MATERIAL

Bar	No.	Size	Length	Shape
a4(E)	16	#4	2'-0"	—
x3(E)	13	#5	2'-5"	—
x4(E)	13	#5	1'-9"	—
Reinforcement Bars Epoxy Coated		Pound		90
Deck Slab Repair (Full Depth, Type II)		Sq. Yd.		6

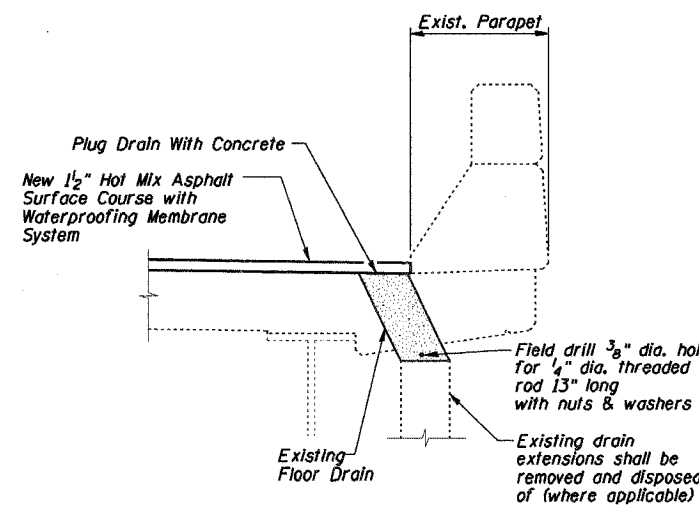
Reinforcement bars designated (E) shall be epoxy coated



NEW SCUPPER PLAN



SECTION H-H



DRAIN ELIMINATION DETAIL

REVISIONS	
NAME	DATE

ILLINOIS DEPARTMENT OF TRANSPORTATION  
CH21 (SAND ROAD) BRIDGE OVER I-88  
STRUCTURE NO: 098-0056  
SECTION: (195-1HB-2)M  
BRIDGE REHABILITATION

TYPICAL PARAPET & DECK SECTIONS & DETAILS

SCALE: NTS

DRAWN BY: M.M.

DATE 2-07-2007

CHECKED BY: K.G.W.