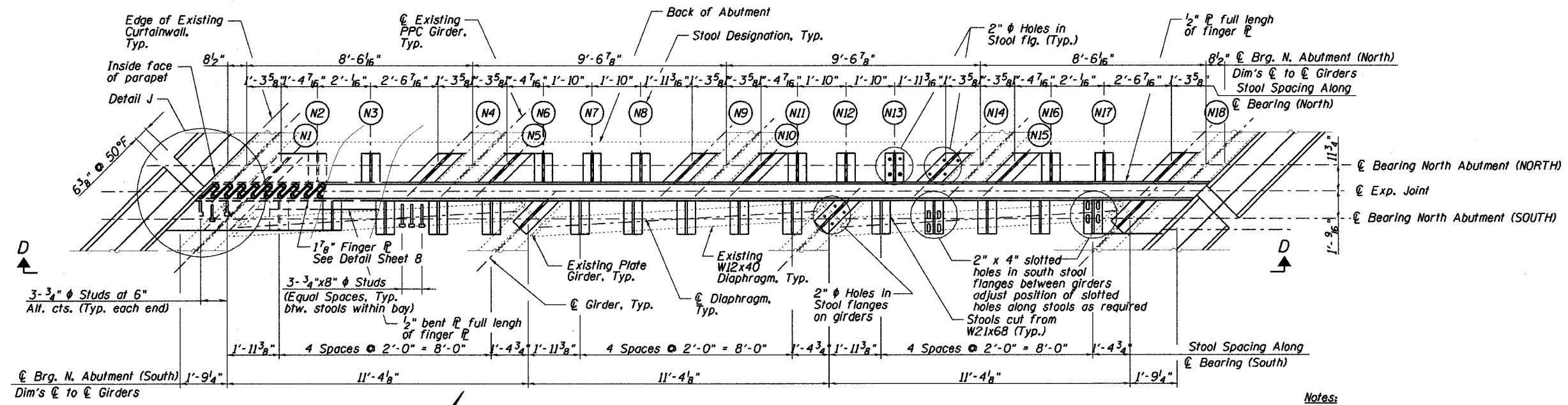


F.A.I. RTE.	SECTION	COUNTY	TOTAL SHEET NO.
88	(195-1HB-2)M	WHITESIDE	17
STA. 44+17 TO STA. 55+10			13
FED. AID PROJECT ILLINOIS FED. ROAD DIST. NO.			



PLAN OF FINGER PLATE JOINT NORTH ABUTMENT

Notes:
 Cost of removal and/or re-installation of all members necessary to complete the work as detailed on the plans and as specified in the Special Provisions shall be included in the cost of "Finger Plate Expansion Joint, 4"

Provide 1/4" normal shim plus one 1/8" and one 1/16" shim for height adjustment under the stools. Contractor shall field verify existing dimensions before ordering the finger plates. Tapered shims shall be added under the stools as required by the Engineer to make a smooth finger joint. Cost shall be included in the cost of "Finger Plate Expansion Joint 4".

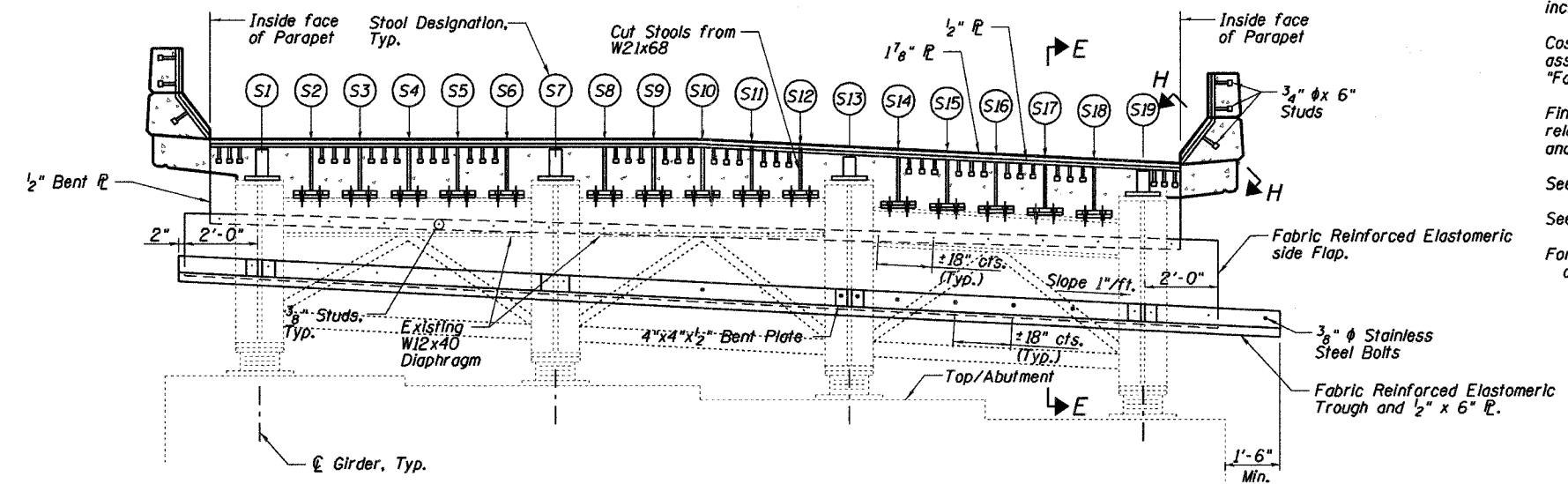
Cost for the fabric reinforced elastomeric trough and all associated hardware shall be included in the cost of "Fabric Reinforced Elastomeric Trough".

Finger Plate Expansion Joint shall be assembled in its final relative position with the ends in place for shop inspection and acceptance.

See sheet 8 for section E-E, and detail J

See sheet 9 for section H-H

For stool elevations and heights, see "Stool Variable Table" on sheet 8.



ELEVATION SECTION D-D
 (Looking North)
 South side of joint shown

BILL OF MATERIAL

Item	Unit	Total
Finger Plate Expansion Joint 4"	Foot	37.5
Fabric Reinforced Elastomeric Trough	Foot	40.0

REVISIONS	
NAME	DATE

ILLINOIS DEPARTMENT OF TRANSPORTATION
 CH21 (SAND ROAD) BRIDGE OVER I-88
 STRUCTURE NO: 098-0056
 SECTION: (195-1HB-2)M
 BRIDGE REHABILITATION
 JOINT PLAN AND ELEVATION
 SCALE: NTS
 DATE: 2-07-2007
 DRAWN BY: M.M.
 CHECKED BY: K.G.W.