

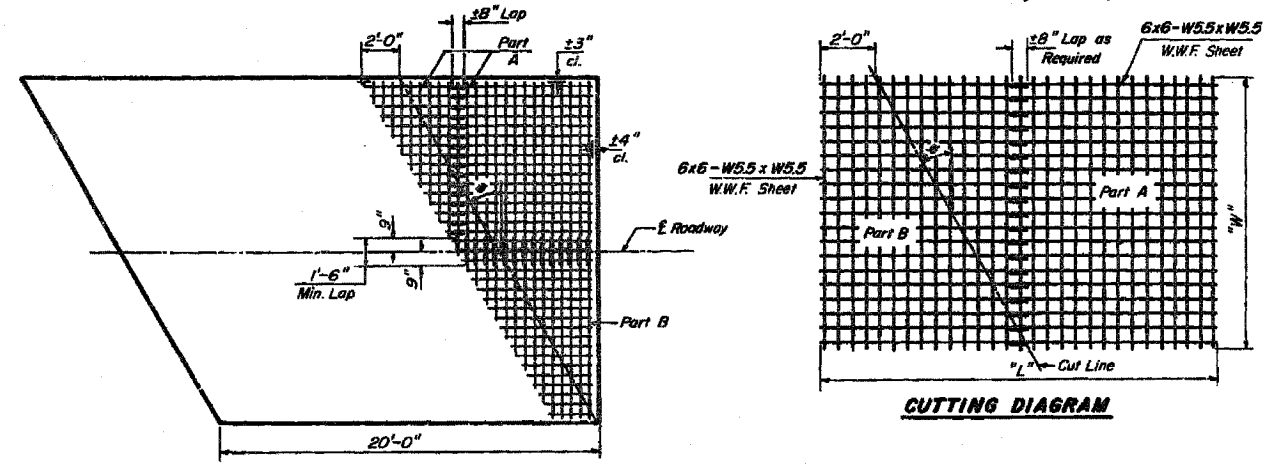
Note: The notation for the number of bars given as "4x2" indicates 4 lines of bars with 2 lengths per line. Min. bar lap = 1'-3"

Slew Angle Degrees	Bottom Reinforcement				Top Reinforcement				Reinforcement (Total Weight) (Pounds)	Slab Area (Sq.Yds.)	6x6-W5.5xW5.5 W.W.F.	
	Transverse #5	Longitudinal #7	Transverse #4	Longitudinal #4	Transverse #4	Longitudinal #4	Dimensions L(Ft.)xW(Ft.)	Area* (Sq.Yds.)				
18'-0" PAVEMENT												
0	20	17'-6"	6	17'-6"	6	17'-6"	2300	40.0				
5	20	17'-7"	6	17'-7"	6	17'-7"	2302	41.6				
10	20	17'-9"	6	17'-9"	6	17'-9"	2306	43.2	7'-0" x 9'-6"	7.4		
15	20	18'-1"	5	18'-1"	5	18'-1"	2303	44.8	8'-6" x 9'-6"	9.0		
20	19	18'-8"	5	18'-8"	5	18'-8"	2297	46.6	10'-6" x 9'-6"	11.1		
25	18	19'-4"	5	19'-4"	5	19'-4"	2292	48.4	12'-3" x 9'-6"	12.9		
30	18	20'-3"	5	20'-3"	5	20'-3"	2313	50.4	14'-3" x 9'-6"	15.0		
35	17	21'-4"	5	21'-4"	5	21'-4"	2315	52.6	16'-6" x 9'-6"	17.4		
40	16	22'-10"	4	22'-10"	4	22'-10"	2307	55.1	19'-0" x 9'-6"	20.1		
45	14	24'-9"	4	24'-9"	4	24'-9"	2293	58.0	21'-9" x 9'-6"	23.0		
50	13	27'-3"	4	27'-3"	4	27'-3"	2308	61.5	25'-6" x 9'-6"	26.9		
55	12x2	15'-9"	3x2	15'-9"	3x2	15'-9"	2322	65.7	29'-9" x 9'-6"	31.4		
60	10x2	18'-0"	3x2	18'-0"	3x2	18'-0"	2313	71.2	35'-3" x 9'-6"	37.2		
24'-0" PAVEMENT												
0	20	23'-6"	6	23'-6"	6	23'-6"	3019	53.3				
3	20	23'-7"	6	23'-7"	6	23'-7"	3021	56.1				
10	20	23'-10"	6	23'-10"	6	23'-10"	3028	58.9	8'-0" x 12'-6"	11.1		
15	20	24'-4"	5	24'-4"	5	24'-4"	3024	61.9	10'-3" x 12'-6"	14.2		
20	19	25'-0"	5	25'-0"	5	25'-0"	3014	64.9	12'-6" x 12'-6"	17.4		
25	18	25'-11"	5	25'-11"	5	25'-11"	3008	68.2	15'-0" x 12'-6"	20.8		
30	18	27'-2"	5	27'-2"	5	27'-2"	3036	71.8	17'-9" x 12'-6"	24.7		
35	17	28'-9"	5	28'-9"	5	28'-9"	3039	75.7	20'-9" x 12'-6"	28.8		
40	16x2	16'-0"	4x2	16'-0"	4x2	16'-0"	3055	80.2	24'-0" x 12'-6"	33.3		
45	14x2	17'-3"	4x2	17'-3"	4x2	17'-3"	3031	85.3	27'-6" x 12'-6"	38.2		
50	13x2	18'-10"	4x2	18'-10"	4x2	18'-10"	3046	91.4	32'-9" x 12'-6"	45.5		
55	12x2	21'-1"	3x2	21'-1"	3x2	21'-1"	3047	99.0	38'-9" x 12'-6"	53.1		
60	10x2	24'-0"	3x2	24'-0"	3x2	24'-0"	3032	108.7	45'-6" x 12'-6"	63.2		

*Area does not include 8" longitudinal laps.
W.W.F. = Welded Wire Fabric

Slew Angle Degrees	Bottom Reinforcement				Top Reinforcement				Reinforcement (Total Weight) (Pounds)	Slab Area (Sq.Yds.)	6x6-W5.5xW5.5 W.W.F.	
	Transverse #5	Longitudinal #7	Transverse #4	Longitudinal #4	Transverse #4	Longitudinal #4	Dimensions L(Ft.)xW(Ft.)	Area* (Sq.Yds.)				
26'-0" PAVEMENT												
0	20	25'-6"	6	25'-6"	6	25'-6"	3238	57.8				
5	20	25'-7"	6	25'-7"	6	25'-7"	3240	61.1				
10	20	25'-11"	6	25'-11"	6	25'-11"	3249	64.4	9'-6" x 13'-6"	12.8		
15	20	26'-5"	5	26'-5"	5	26'-5"	3243	67.8	11'-0" x 13'-6"	16.5		
20	19	27'-2"	5	27'-2"	5	27'-2"	3233	71.4	13'-6" x 13'-6"	20.3		
25	18	28'-2"	5	28'-2"	5	28'-2"	3227	75.3	16'-3" x 13'-6"	24.4		
30	18x2	15'-3"	5x2	15'-3"	5x2	15'-3"	3278	79.5	19'-0" x 13'-6"	28.5		
35	17x2	16'-1"	5x2	16'-1"	5x2	16'-1"	3282	84.1	22'-3" x 13'-6"	33.4		
40	16x2	17'-2"	4x2	17'-2"	4x2	17'-2"	3269	89.3	25'-9" x 13'-6"	38.6		
45	14x2	18'-6"	4x2	18'-6"	4x2	18'-6"	3243	95.3	30'-0" x 13'-6"	45.0		
50	13x2	20'-4"	4x2	20'-4"	4x2	20'-4"	3264	102.5	35'-0" x 13'-6"	52.5		
55	12x2	22'-9"	3x2	22'-9"	3x2	22'-9"	3265	111.4	41'-3" x 13'-6"	61.9		
60	10x2	26'-0"	3x2	26'-0"	3x2	26'-0"	3251	122.8	49'-0" x 13'-6"	73.5		
36'-0" PAVEMENT												
0	20x2	18'-3"	6x2	18'-3"	6x2	18'-3"	4471	80.0				
5	20x2	18'-4"	6x2	18'-4"	6x2	18'-4"	4475	86.3				
10	20x2	18'-6"	6x2	18'-6"	6x2	18'-6"	4483	92.7	10'-0" x 18'-6"	20.8		
15	20x2	18'-10"	5x2	18'-10"	5x2	18'-10"	4475	99.3	13'-6" x 18'-6"	27.7		
20	19x2	19'-5"	5x2	19'-5"	5x2	19'-5"	4462	106.2	17'-0" x 18'-6"	34.9		
25	18x2	20'-2"	5x2	20'-2"	5x2	20'-2"	4455	113.6	20'-6" x 18'-6"	42.1		
30	18x2	21'-0"	5x2	21'-0"	5x2	21'-0"	4492	121.6	24'-9" x 18'-6"	50.8		
35	17x2	22'-3"	5x2	22'-3"	5x2	22'-3"	4501	130.4	29'-0" x 18'-6"	59.6		
40	16x2	23'-9"	4x2	23'-9"	4x2	23'-9"	4483	140.4	33'-9" x 18'-6"	69.4		
45	14x2	25'-8"	4x2	25'-8"	4x2	25'-8"	4450	152.0	39'-6" x 18'-6"	81.2		
50	13x2	28'-2"	4x2	28'-2"	4x2	28'-2"	4477	165.8	46'-6" x 18'-6"	95.6		
55	12x3	21'-4"	3x3	21'-4"	3x3	21'-4"	4492	182.8	55'-0" x 18'-6"	113.0		
60	10x3	24'-4"	3x3	24'-4"	3x3	24'-4"	4471	204.7	65'-9" x 18'-6"	139.1		

*Area does not include 8" longitudinal laps.



PLACEMENT OF 6x6-W5.5xW5.5
W.W.F. only required on skews $\geq 10^\circ$

BRIDGE APPROACH PAVEMENT
Sheet 2 of 2
STANDARD 2392-2

H-S-31b

FOR INFORMATION ONLY

PLOT DATE = Wed Jan 31 11:43:56 2007
 FILE NAME = 0:\bnc\cadd\plans\various\counties\2388\pavement\stding.dgn
 PLOT SCALE = 25.000000 / 1 IN.
 USER NAME = tmcj

Illinois Department of Transportation
 APPROVED: [Signature] Mar. 10, 1986
 Engineer of Structures
 APPROVED: [Signature] Mar. 10, 1986
 Engineer of Design