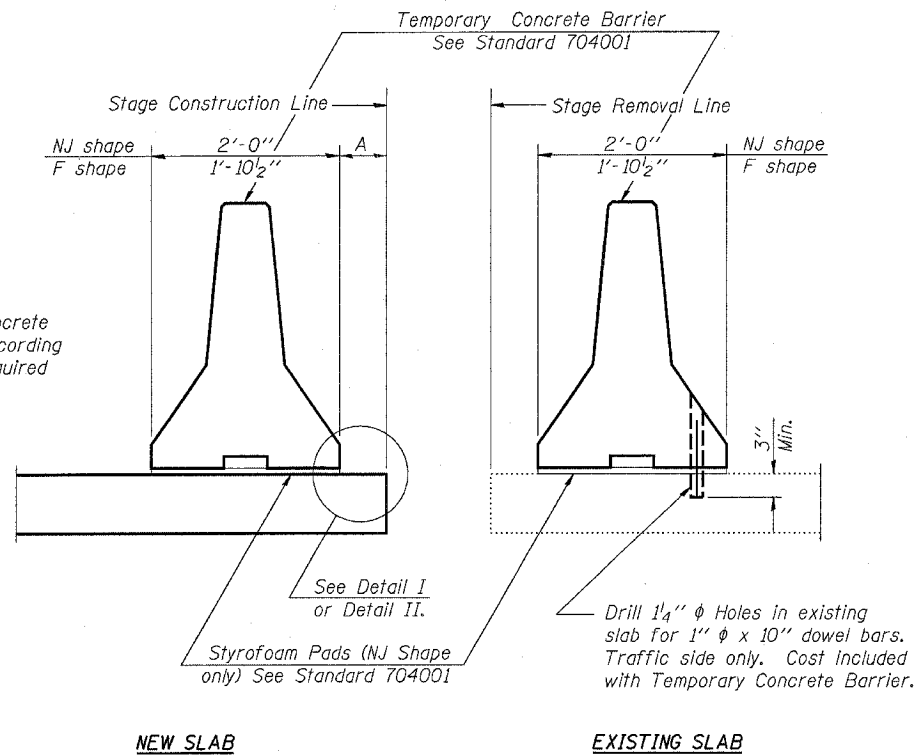


STATE OF ILLINOIS
DEPARTMENT OF TRANSPORTATION

ROUTE NO.	SECTION	COUNTY	SHEET	SHEET NO.
FAS 1279	1071	LaSALLE	43	23
FED. ROAD DIST. NO.	ILLINOIS	FED. AID PROJECT-		5 SHEETS

CTR# 66400

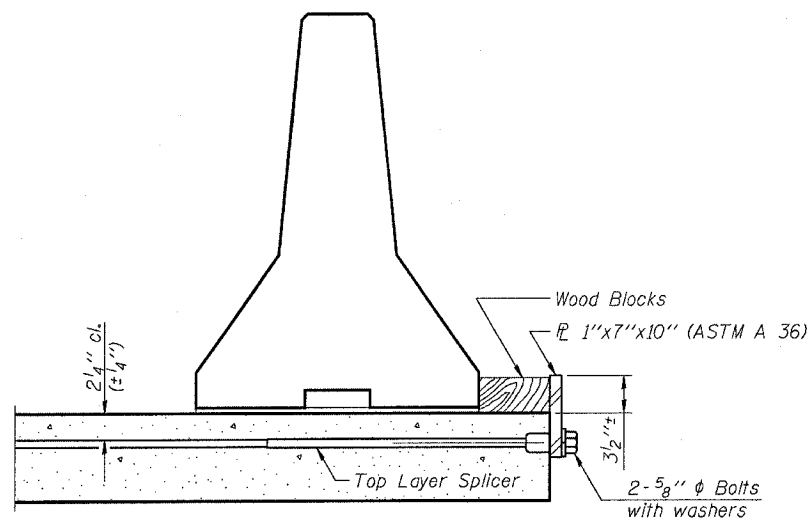
When "A" is 3'-6" or less, the temporary concrete barrier shall be anchored to the new slab according to Detail I or Detail II. No anchorage is required when "A" is greater than 3'-6".



SECTIONS THRU SLAB

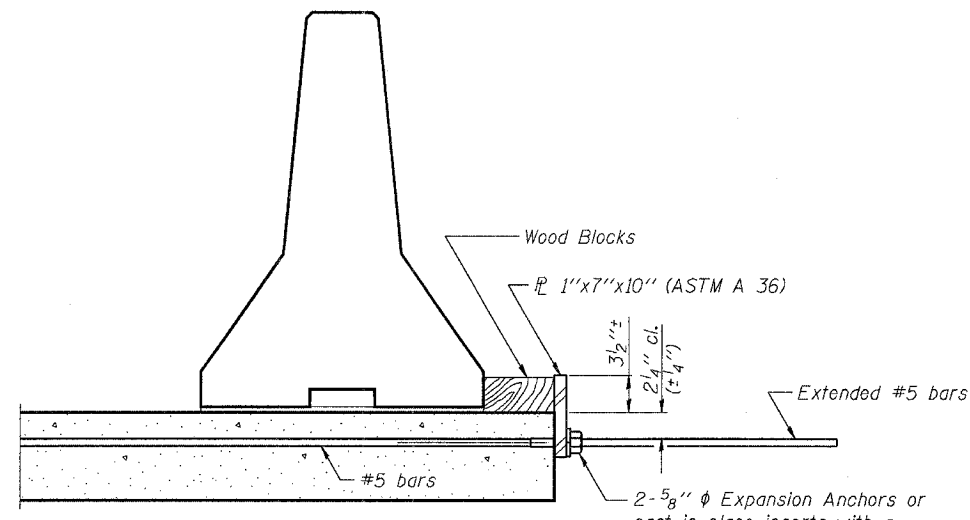
NOTES

- Detail I - With Bar Splicer or Couplers:
Connect one (1) 1"x7"x10" steel \bar{L} to the top layer of couplers with 2-5/8" ϕ bolts screwed to coupler at approximate \bar{C} of each barrier panel.
- Detail II - With Extended Reinforcement Bars:
Connect one (1) 1"x7"x10" steel \bar{L} to the concrete slab with 2-5/8" ϕ Expansion Anchors or cast in place inserts spaced between the top layer of reinforcement at approximate \bar{C} of each barrier panel.
- Cost of anchorage is included with Temporary Concrete Barrier.



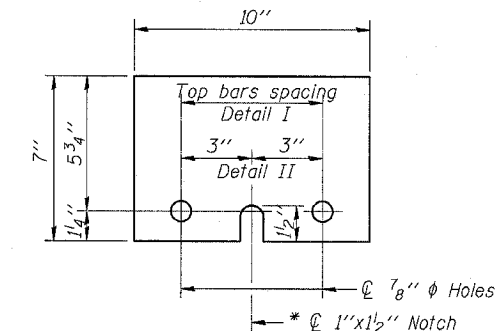
DETAIL I

The 1"x7"x10" Plate shall not be removed until Stage II Construction forms and reinforcement bars are in place.



DETAIL II

The 1"x7"x10" Plate shall not be removed until Stage II Construction forms and all reinforcement bars are in place and the concrete is ready to be placed.



\bar{L} 1"x7"x10"

* Required only with Detail II.

**TEMPORARY CONCRETE
BARRIER FOR STAGE
CONSTRUCTION
IL ROUTE 178 OVER
UNNAMED TRIBUTARY
FAS 1279 SECTION 1071
LaSALLE COUNTY
STATION 1032+49.18
STRUCTURE NO. 050-2041**

ESCA
CONSULTANTS, INC.

DESIGNED BY:	MTD	11/04
DRAWN BY:	RJT	11/04
CHECKED BY:	MTD	11/04
APPROVED BY:	RDP	05/06