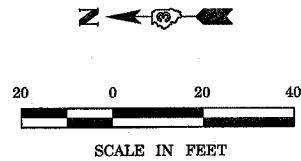


FAS RTE	SECTION	COUNTY	TOTAL SHEETS	SHEET NO.
1279	107I	LaSALLE	43	24
STA. 1116+40		TO STA. 1123+60		
FED. ROAD DIST. NO.	ILLINOIS	FED. AID PROJECT AID		



**SCHEDULE OF QUANTITIES**

TEMPORARY CONCRETE BARRIER	STATION TO	STATION	FEET
	1118+20	1121+80	360
			TOTAL 360

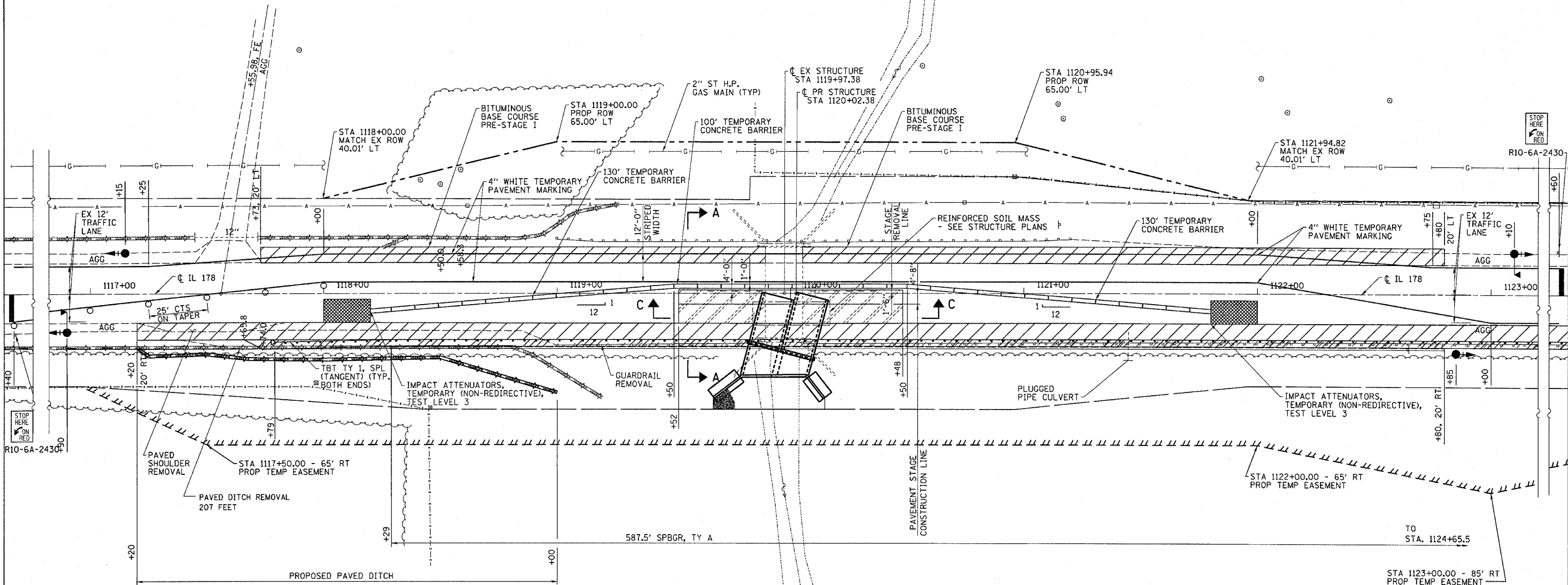
TEMPORARY BRIDGE TRAFFIC SIGNALS - 1 EACH

IMPACT ATTENUATORS, TEMPORARY (NON-REDIRECTIVE), TEST LEVEL 3 - 2 EACH

TRAFFIC CONTROL AND PROTECTION, STANDARD 701321 - 1 EACH

**GENERAL NOTES**

1. TRAFFIC CONTROL SHALL BE ERECTED AS SHOWN AND ACCORDING TO "TRAFFIC CONTROL AND PROTECTION, STANDARD 701321."
2. SEE SPECIAL PROVISIONS FOR ADDITIONAL TRAFFIC CONTROL REQUIREMENTS.
3. COORDINATE LOCATION OF SIGNALS WITH FINAL WORK AS DIRECTED BY THE ENGINEER.



**LEGEND**

- HOT-MIX ASPHALT BASE COURSE, 10"
- PAVEMENT REMOVAL
- HOT-MIX ASPHALT SHOULDERS, 6"
- DRUM WITH STEADY BURNING LIGHT AT 50' CTS UNLESS NOTED OTHERWISE
- TRAFFIC SIGNAL WITH BACKPLATE, SIGNAL DIRECTION INDICATED
- TC 26B MICROWAVE ON ARM

**ESCA**  
CONSULTANTS, INC.

DESIGNED BY:	MTD	01/06
DRAWN BY:	HAG	01/06
CHECKED BY:	MTD	05/06
APPROVED BY:	RDP	05/06

**STAGE I**  
**CONSTRUCTION**  
FAS 1279 (IL 178)  
SECTION 107I  
LaSALLE COUNTY  
STATION 1120+02.38