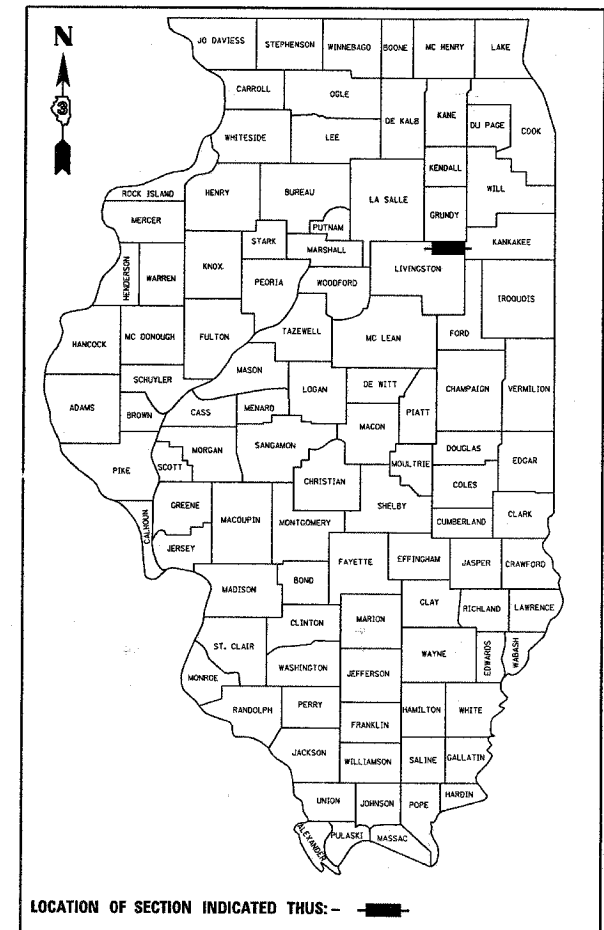


F.A.P. RTE.	SECTION	COUNTY	TOTAL SHEETS	SHEET NO.
41	(15)RS-3	LIVINGSTON	16	1

D-93-022-04



STATE OF ILLINOIS
DEPARTMENT OF TRANSPORTATION
DIVISION OF HIGHWAYS

**PROPOSED
HIGHWAY PLANS**

F.A.P. ROUTE 41 (IL 17)
SECTION (15)RS-3
PROJECT F-0041 (128)
LIVINGSTON COUNTY
C - 93 - 023 - 04

3P RESURFACING AND MILLING
ECL OF DWIGHT TO WEST OF REDDICK

INDEX OF SHEETS

- 1 COVER SHEET
- 2 GENERAL NOTES
- 3 - 4 SUMMARY OF QUANTITIES
- 5 TYPICAL SECTIONS
- 6 - 8 SCHEDULE OF QUANTITIES
- 9-11 SURVEY TIES
- 12 PROJECT LAYOUT
- 13 PAVEMENT MARKING DETAILS
- 14-16 MISCELLANEOUS DETAILS

HIGHWAY STANDARDS

- 001006 DECIMAL OF AN INCH AND OF A FOOT
- 280001-03 TEMPORARY EROSION CONTROL SYSTEMS
- 667101 PERMANENT SURVEY MARKERS
- 701006-02 OFF-ROAD OPERATIONS 2L, 2W, 4.5 m (15') TO 600 mm (24") FROM PAVEMENT EDGE
- 701011-01 OFF-ROAD MOVING OPERATIONS, 2-L, 2-W, DAY ONLY
- 701301-02 LANE CLOSURE, 2L, 2W, SHORT TIME OPERATIONS
- 701306-01 LANE CLOSURE, 2L, 2W; SLOW MOVING OPERATIONS DAY ONLY, FOR SPEEDS ≥ 45 MPH
- 701311-02 LANE CLOSURE, 2-L, 2-W, MOVING DAY ONLY OPERATIONS
- 702001-06 TRAFFIC CONTROL DEVICES
- 780001-01 TYPICAL PAVEMENT MARKINGS
- 781001-02 TYPICAL APPLICATIONS, RAISED REFLECTIVE PAVEMENT MARKERS

FULL SIZE PLANS HAVE BEEN PREPARED USING STANDARD ENGINEERING SCALES, REDUCED SIZED PLANS WILL NOT CONFORM TO STANDARD SCALES, IN MAKING MEASUREMENTS ON REDUCED PLANS, THE ABOVE SCALES MAY BE USED.

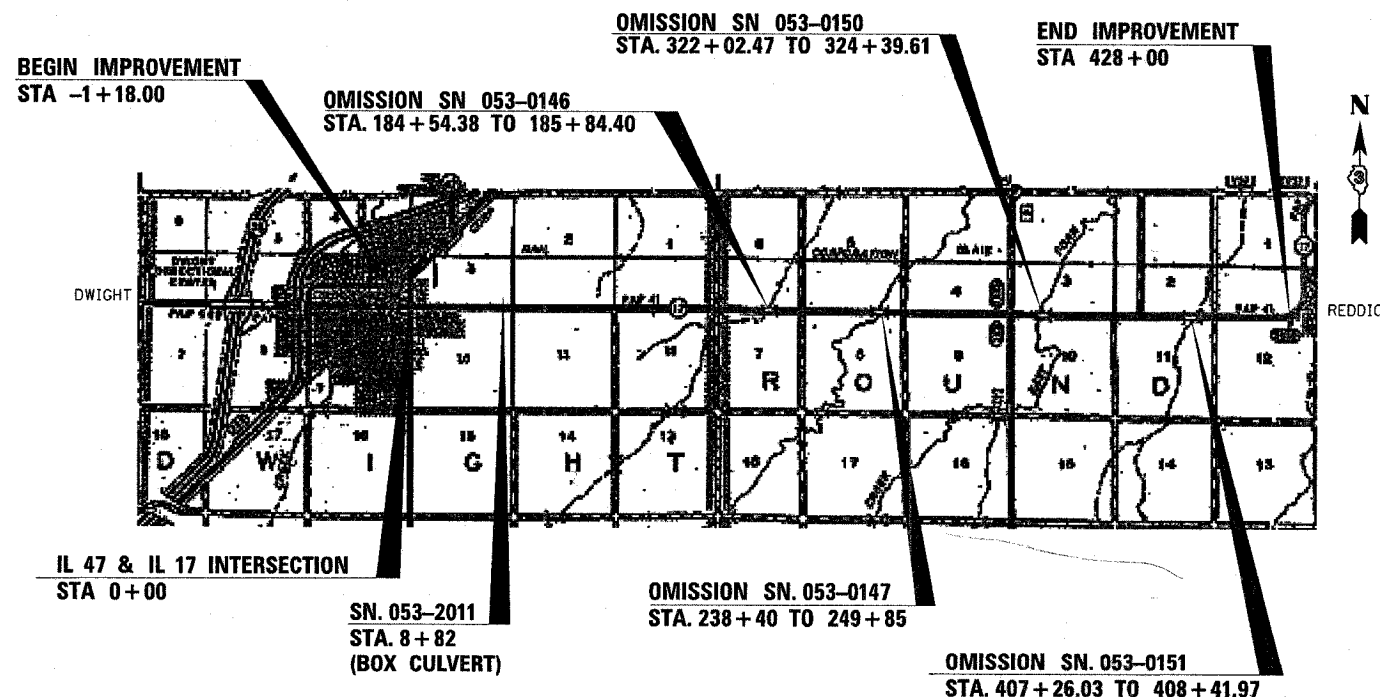
MICROFILMED _____
REEL NUMBER _____
AWARDED _____
RESIDENT ENGINEER _____
AS BUILT CHANGES WERE MADE ON THE FOLLOWING SHEETS _____

J.U.L.I.E.
JOINT UTILITY LOCATION INFORMATION FOR EXCAVATION
1-800-892-0123

DISTRICT 3 NO. (815) 434-6131

PROJECT ENGINEER: JOE KANNEL
UNIT CHIEF: MICHELE LINDEMANN
TOWNSHIP: DWIGHT & ROUND

CONTRACT NO. 66421



LOCATION MAP
NOT TO SCALE

GROSS LENGTH = 42,918.00 FT. = 8.128 MI.
NET LENGTH = 41,289.90 FT. = 7.820 MI.

RURAL MINOR
ARTERIAL

2005 ADT = 3000

P.V. = 75.0 % S.U. = 5.0 % M.U. = 20.0 %

STATE OF ILLINOIS
DEPARTMENT OF TRANSPORTATION
DIVISION OF HIGHWAYS

SUBMITTED 20 _____
George Rayson
DEPUTY DIRECTOR OF HIGHWAYS, REGION ENGINEER
May 11, 20 07
Eve E. Harshbarger
ENGINEER OF DESIGN AND ENVIRONMENT
May 11, 20 07
Milton R. See
DIRECTOR OF HIGHWAYS, CHIEF ENGINEER

PRINTED BY THE AUTHORITY
OF THE STATE OF ILLINOIS