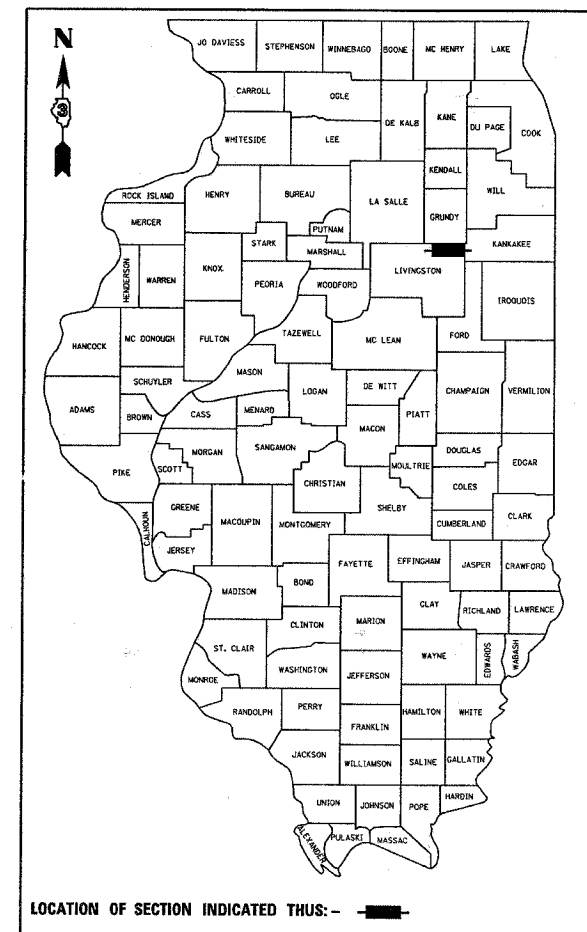


F.A.P. RTE.	SECTION	COUNTY	TOTAL SHEETS	SHEET NO.
41	(15)RS-3	LIVINGSTON	16	1

D-93-022-04



RURAL MINOR ARTERIAL

2005 ADT = 3000

P.V. = 75.0 % S.U. = 5.0 % M.U. = 20.0 %

STATE OF ILLINOIS
DEPARTMENT OF TRANSPORTATION
DIVISION OF HIGHWAYS

SUBMITTED 20

George Rayson
DEPUTY DIRECTOR OF HIGHWAYS, REGION ENGINEER

May 11, 20 07
Eve E. Harshbarger
ENGINEER OF DESIGN AND ENVIRONMENT

May 11, 20 07
Milton R. See
DIRECTOR OF HIGHWAYS, CHIEF ENGINEER

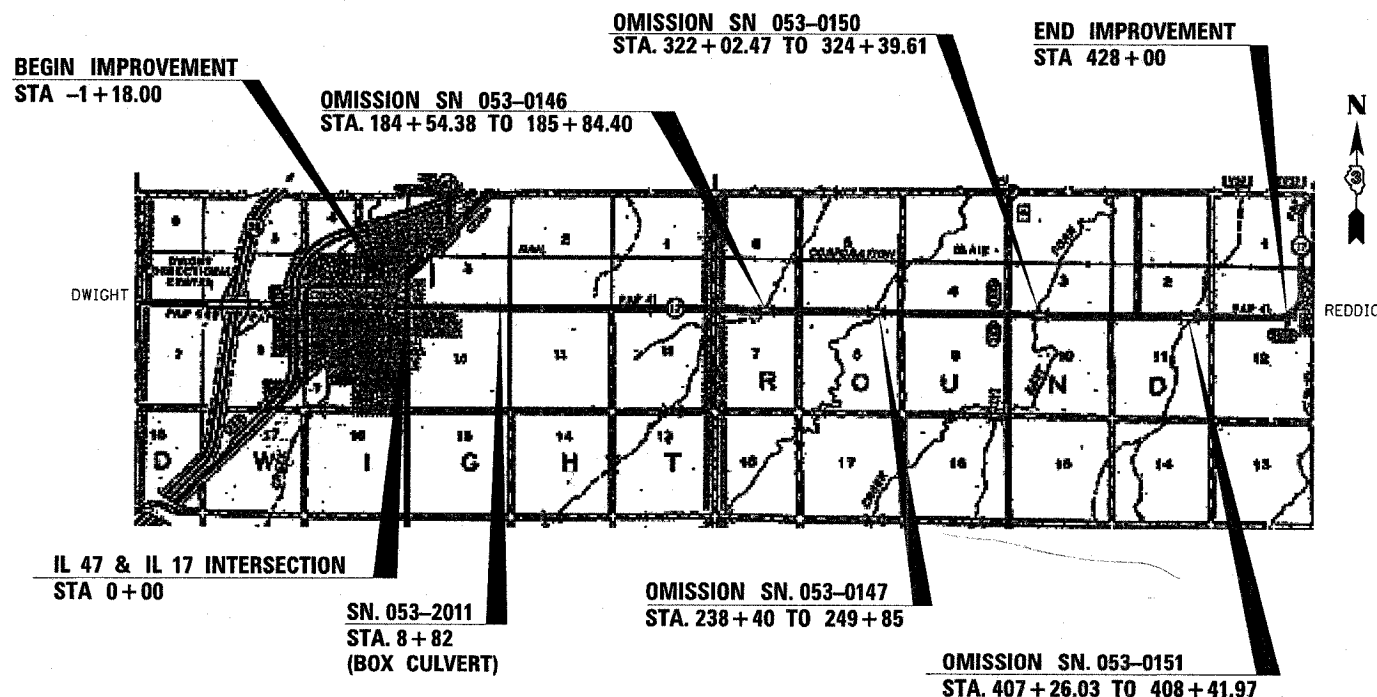
PRINTED BY THE AUTHORITY OF THE STATE OF ILLINOIS

STATE OF ILLINOIS
DEPARTMENT OF TRANSPORTATION
DIVISION OF HIGHWAYS

PROPOSED
HIGHWAY PLANS

F.A.P. ROUTE 41 (IL 17)
SECTION (15)RS-3
PROJECT F-0041 (128)
LIVINGSTON COUNTY
C - 93 - 023 - 04

3P RESURFACING AND MILLING
ECL OF DWIGHT TO WEST OF REDDICK



LOCATION MAP
NOT TO SCALE

GROSS LENGTH = 42,918.00 FT. = 8.128 MI.
NET LENGTH = 41,289.90 FT. = 7.820 MI.

INDEX OF SHEETS

- 1 COVER SHEET
- 2 GENERAL NOTES
- 3 - 4 SUMMARY OF QUANTITIES
- 5 TYPICAL SECTIONS
- 6 - 8 SCHEDULE OF QUANTITIES
- 9-11 SURVEY TIES
- 12 PROJECT LAYOUT
- 13 PAVEMENT MARKING DETAILS
- 14-16 MISCELLANEOUS DETAILS

HIGHWAY STANDARDS

- 001006 DECIMAL OF AN INCH AND OF A FOOT
- 280001-03 TEMPORARY EROSION CONTROL SYSTEMS
- 667101 PERMANENT SURVEY MARKERS
- 701006-02 OFF-ROAD OPERATIONS 2L, 2W, 4.5 m (15') TO 600 mm (24") FROM PAVEMENT EDGE
- 701011-01 OFF-ROAD MOVING OPERATIONS, 2-L, 2-W, DAY ONLY
- 701301-02 LANE CLOSURE, 2L, 2W, SHORT TIME OPERATIONS
- 701306-01 LANE CLOSURE, 2L, 2W; SLOW MOVING OPERATIONS DAY ONLY, FOR SPEEDS ≥ 45 MPH
- 701311-02 LANE CLOSURE, 2-L, 2-W, MOVING DAY ONLY OPERATIONS
- 702001-06 TRAFFIC CONTROL DEVICES
- 780001-01 TYPICAL PAVEMENT MARKINGS
- 781001-02 TYPICAL APPLICATIONS, RAISED REFLECTIVE PAVEMENT MARKERS

FULL SIZE PLANS HAVE BEEN PREPARED USING STANDARD ENGINEERING SCALES, REDUCED SIZED PLANS WILL NOT CONFORM TO STANDARD SCALES, IN MAKING MEASUREMENTS ON REDUCED PLANS, THE ABOVE SCALES MAY BE USED.

MICROFILMED _____
REEL NUMBER _____
AWARDED _____
RESIDENT ENGINEER _____
AS BUILT CHANGES WERE MADE ON THE FOLLOWING SHEETS _____

J.U.L.I.E.
JOINT UTILITY LOCATION INFORMATION FOR EXCAVATION
1-800-892-0123

DISTRICT 3 NO. (815) 434-6131

PROJECT ENGINEER: JOE KANNEL
UNIT CHIEF: MICHELE LINDEMANN
TOWNSHIP: DWIGHT & ROUND

CONTRACT NO. 66421

F.A.P. RTE.	SECTION	COUNTY	TOTAL SHEETS	SHEET NO.
41	(15)RS-3	LIVINGSTON	16	2
STA.		TO STA.		
FED. ROAD DIST. NO.		ILLINOIS	FED. AID PROJECT	

GENERAL NOTES

THE THICKNESS OF HMA SHOWN ON THE PLANS IS THE NOMINAL THICKNESS. DEVIATIONS FROM THE NOMINAL THICKNESS WILL BE PERMITTED WHEN SUCH DEVIATIONS OCCUR DUE TO IRREGULARITIES IN THE EXISTING SURFACE OR BASE ON WHICH THE HMA IS PLACED.

THE HMA SURFACE OF ALL MAILBOX TURNOUTS, PRIVATE ENTRANCES, COMMERCIAL ENTRANCES, AND SIDE ROADS SHALL BE MADE NEATLY, IN A WORKMANLIKE MANNER, AND SHALL ACCURATELY CONFORM TO THE SHAPES AND DIMENSIONS SHOWN ON THE PLAN DETAILS. IF REQUIRED BY THE ENGINEER, THE CONTRACTOR SHALL BE REQUIRED TO SAW CUT THE HMA SURFACE TO CONFORM TO THE SHAPES AND DIMENSIONS SHOWN ON THE PLAN DETAILS. THIS WORK SHALL BE INCLUDED IN THE COST OF THE HMA SURFACE

EXCEPT AS NOTED ON THE PLANS, PAVEMENT GRADES SHOWN ARE AT THE TOP OF PAVEMENT SURFACES.

THE ENGINEER WILL BE THE SOLE JUDGE CONCERNING CURING TIME FOR THE VARIOUS HMA LIFTS.

FOR STABILIZATION, ALL TYPE III BARRICADES SHALL REQUIRE A MINIMUM OF FOUR SAND BAGS PER BARRICADE.

WHERE SECTION OR SUBSECTION MONUMENTS ARE ENCOUNTERED, THE ENGINEER SHALL BE NOTIFIED BEFORE SUCH MONUMENTS ARE REMOVED. THE CONTRACTOR SHALL PROTECT AND CAREFULLY PRESERVE ALL MONUMENTS UNTIL AN AUTHORIZED SURVEYOR OR AGENT HAS WITNESSED OR OTHERWISE REFERENCED THEIR LOCATION. THE CONTRACTOR SHALL BE RESPONSIBLE FOR HAVING AN AUTHORIZED SURVEYOR REESTABLISH ANY SECTION OR SUBSECTION MONUMENTS DESTROYED BY HIS OPERATIONS.

SEEDING SHALL NOT BE PERMITTED AT ANY TIME WHEN THE GROUND IS FROZEN, WET, OR IN AN UNTILLABLE CONDITION. LOCATIONS TO BE SEEDED WILL BE DETERMINED BY THE ENGINEER.

THE FINISHED EARTHWORK SHALL HAVE A VEGETATION SUSTAINING SOIL COVERING THE TOP FOUR INCHES IN AREAS TO BE SEEDED OR SODDED. THE VEGETATION SUSTAINING SOIL REQUIRED WILL NOT BE PAID FOR SEPARATELY BUT SHALL BE INCLUDED IN THE COST OF FURNISHED EXCAVATION.

ON EXISTING PAVEMENT WHICH MAY BE SUPERELEVATED, THE NEW HMA PAVEMENT SHALL BE BUILT WITH THE SAME SUPERELEVATION UNLESS NEW SUPERELEVATION RATES ARE GIVEN ON THE PLANS.

ALL ELEVATIONS REFERRING TO U.S.G.S. MEAN SEA LEVEL DATUM.

ANY REFERENCE TO A STANDARD IN THESE PLANS SHALL BE INTERPRETED TO MEAN THE EDITION AS INDICATED BY THE SUBNUMBER SHOWN IN THE LIST OF STANDARDS OR THE COPY INCLUDED IN THESE PLANS.

THE FOLLOWING RATES OF APPLICATION HAVE BEEN USED IN CALCULATING PLAN QUANTITIES:

GRANULAR MATERIALS	2.05	TONS / CU YD
BITUMINOUS MAT PRIME COAT	0.08	GAL / SQ YD OR
	0.375	GAL / SQ YD
AGGREGATE PRIME COAT	0.002	TONS / SQ YD
HMA RESURFACING	112	LBS / SQ YD / IN
SHORT TERM PAVEMENT MARKING	10	FT / 100 FT OF APPLICATION
MIX FOR CRACKS, JTS & FLGWYS	0.0003	TONS / SQ YD
LEVEL BINDER (HAND METHOD)	0.0005	TONS / SQ YD

ALL DAMAGE TO DEPARTMENT OWNED UNDERGROUND FACILITIES, CAUSED BY THE CONTRACTOR SHALL BE REPAIRED TO THE SATISFACTION OF THE DEPARTMENT AT THE CONTRACTOR'S EXPENSE. THIS SHALL INCLUDE ALL TEMPORARY REPAIRS REQUIRED TO KEEP THE FACILITY OPERATIONAL WHILE MATERIAL IS BEING OBTAINED TO MAKE PERMANENT REPAIRS. SPlicing OF ELECTRIC CABLE SHALL NOT BE ALLOWED. ELECTRIC CABLE SHALL BE REPLACED FROM POLE TO POLE OR CONTROLLER.

THE CONTRACTOR SHALL CONTACT JULIE AT LEAST 48 HOURS PRIOR TO EXCAVATION TO DETERMINE WHICH UTILITIES ARE IN THE AREA.

STATE OF ILLINOIS
DEPARTMENT OF TRANSPORTATION
DISTRICT THREE

PREPARED BY: *Rich Powell*
DISTRICT STUDIES & PLANS ENGINEER

DATE: March 29, 2007

EXAMINED BY: *Herb Jones*
DISTRICT CONSTRUCTION ENGINEER

Maed
DISTRICT MATERIALS ENGINEER

James A. ...
DISTRICT OPERATIONS ENGINEER

FAP RTE	SECTION	COUNTY	TOTAL SHEETS	SHEET NO
41	15RS-3	LIVINGSTON	16	3
STA		TO STA		
FED ROAD DIST NO	ILLINOIS	FED AID PROJECT		
CONTRACT NO. 66421				

SUMMARY OF QUANTITIES					
CODE NO.	CONSTRUCTION CODE TYPE: ITEM	UNIT	80% FED / 20% STATE	I000	SFTY-2A
			TOTAL QUANTITY	ROADWAY QUANTITY	053-2011 BRIDGE QUANTITY
20400800	FURNISHED EXCAVATION	CU YD	88	88	
25000200	SEEDING, CLASS 2	ACRE	0.7	0.7	
25000400	NITROGEN FERTILIZER NUTRIENT	POUND	58	58	
25000500	PHOSPHORUS FERTILIZER NUTRIENT	POUND	58	58	
25000600	POTASSIUM FERTILIZER NUTRIENT	POUND	58	58	
25100630	EROSION CONTROL BLANKET	SQ YD	3066	3066	
40200800	AGGREGATE SURFACE COURSE, TYPE B	TON	43	43	
40600100	BITUMINOUS MATERIALS (PRIME COAT)	GALLON	11597	11597	
40600300	AGGREGATE (PRIME COAT)	TON	284	284	
40600400	MIXTURE FOR CRACKS, JOINTS, AND FLANGEWAYS	TON	41	41	
40600535	LEVELING BINDER (HAND METHOD), N70	TON	69	69	
40600635	LEVELING BINDER (MACHINE METHOD), N70	TON	5482	5480	2
40600895	CONSTRUCTING TEST STRIP	EACH	1	1	
40600982	HOT-MIX ASPHALT SURFACE REMOVAL - BUTT JOINT	SQ YD	909	909	
40600985	PORTLAND CEMENT CONCRETE SURFACE REMOVAL - BUTT JOINT	SQ YD	45	45	
40600990	TEMPORARY RAMP	SQ YD	375	375	
40603315	HOT-MIX ASPHALT SURFACE COURSE, MIX 'C', N70	TON	11271	11266	5
40800050	INCIDENTAL HOT-MIX ASPHALT SURFACING	TON	286	286	
44000152	HOT-MIX ASPHALT SURFACE REMOVAL, 3/4"	SQ YD	133711	133658	53
44000155	HOT-MIX ASPHALT SURFACE REMOVAL, 1 1/2"	SQ YD	3655	3655	
48101200	AGGREGATE SHOULDERS, TYPE B	TON	8461	8461	
48203100	HOT-MIX ASPHALT SHOULDERS	TON	507	507	

* SPECIALTY ITEMS

REVISIONS	
NAME	DATE

ILLINOIS DEPARTMENT OF TRANSPORTATION

SUMMARY OF QUANTITIES

SCALE: VERT.
HORIZ.
DATE

DRAWN BY
CHECKED BY

FAP RTE	SECTION	COUNTY	TOTAL SHEETS	SHEET NO
41	(15)RS-3	LIVINGSTON	16	4
STA		TO STA		
FED ROAD DIST NO	ILLINOIS	FED AID PROJECT		
CONTRACT NO. 66421				

SUMMARY OF QUANTITIES (CONTINUED)

CODE NO.	CONSTRUCTION CODE TYPE: ITEM	UNIT	80% FED / 20% STATE	I000	SFTY-2A
			TOTAL QUANTITY	ROADWAY QUANTITY	053-2011 BRIDGE QUANTITY
66700205	PERMANENT SURVEY MARKERS, TYPE I	EACH	11	11	
67000400	ENGINEER'S FIELD OFFICE, TYPE A	CAL MO	4	4	
67100100	MOBILIZATION	L SUM	1	1	
70100460	TRAFFIC CONTROL AND PROTECTION, STANDARD 701306	L SUM	1	1	
70300100	SHORT-TERM PAVEMENT MARKING	FOOT	12368	12368	
70300220	TEMPORARY PAVEMENT MARKING - LINE 4'	FOOT	81515	81515	
70300240	TEMPORARY PAVEMENT MARKING - LINE 6'	FOOT	10977	10977	
70300250	TEMPORARY PAVEMENT MARKING - LINE 8'	FOOT	180	180	
70300260	TEMPORARY PAVEMENT MARKING - LINE 12'	FOOT	60	60	
70300280	TEMPORARY PAVEMENT MARKING - LINE 24'	FOOT	196	196	
70301000	WORK ZONE PAVEMENT MARKING REMOVAL	SQ FT	2739	2739	
• 78000400	THERMOPLASTIC PAVEMENT MARKING - LINE 6'	FOOT	788	788	
• 78000500	THERMOPLASTIC PAVEMENT MARKING - LINE 8'	FOOT	180	180	
• 78000600	THERMOPLASTIC PAVEMENT MARKING - LINE 12'	FOOT	60	60	
• 78000650	THERMOPLASTIC PAVEMENT MARKING - LINE 24'	FOOT	196	196	
• 78001110	PAINT PAVEMENT MARKING - LINE 4'	FOOT	81515	81515	
• 78001130	PAINT PAVEMENT MARKING - LINE 6'	FOOT	10189	10189	
• 78100100	RAISED REFLECTIVE PAVEMENT MARKER	EACH	504	504	
• 78200300	PRISMATIC CURB REFLECTOR	EACH	48	48	
78300200	RAISED REFLECTIVE PAVEMENT MARKER REMOVAL	EACH	504	504	
Z0010700	COLD MILLING	SQ YD	44417	44417	

• SPECIALTY ITEMS

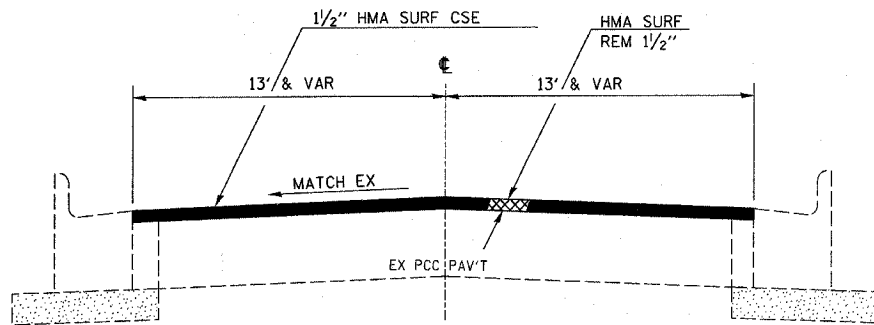
REVISIONS	
NAME	DATE

ILLINOIS DEPARTMENT OF TRANSPORTATION

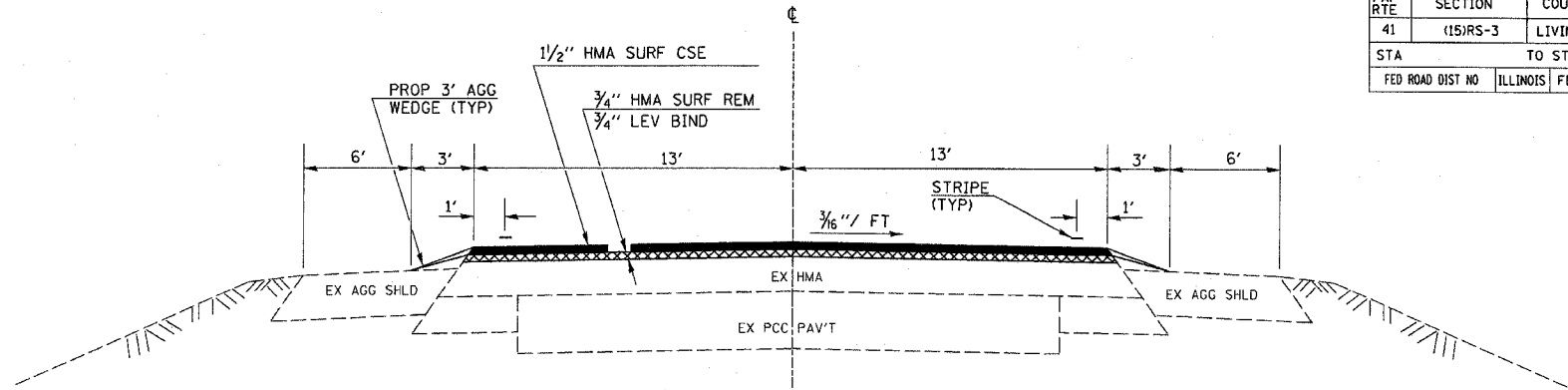
SUMMARY OF QUANTITIES

SCALE: VERT.
HORIZ.
DATE

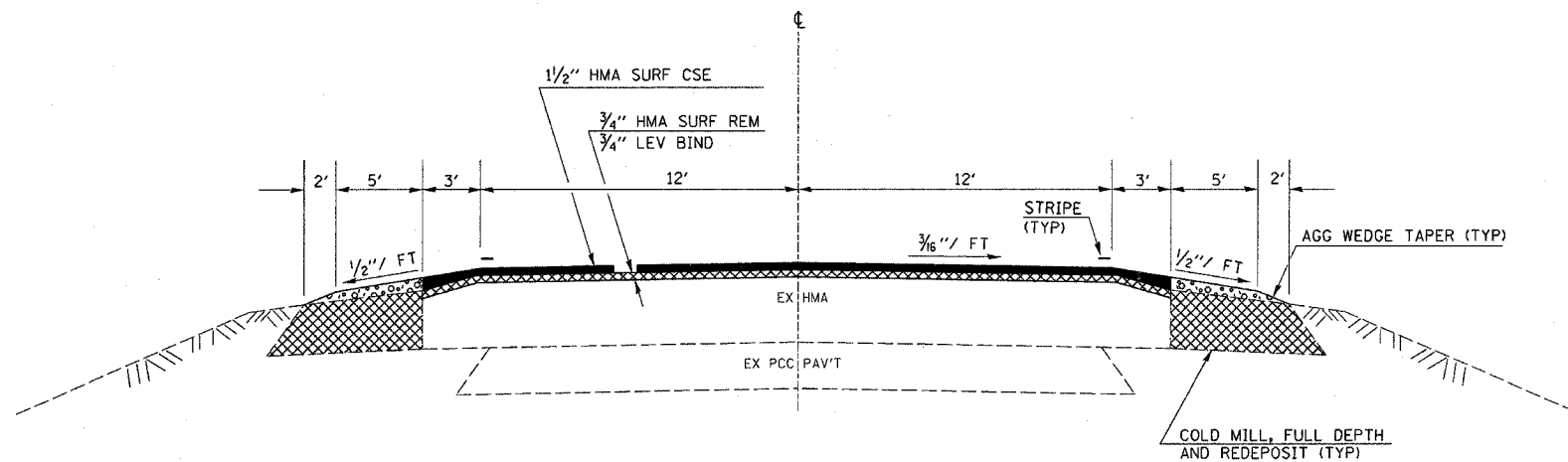
DRAWN BY
CHECKED BY



IL 17 EXISTING TYPICAL SECTION
STA -1+18.00 TO STA 4+44.47



IL 17 PROP TYPICAL SECTION
STA. 309+34 TO 328+50
STA. 342+00 TO 428+00

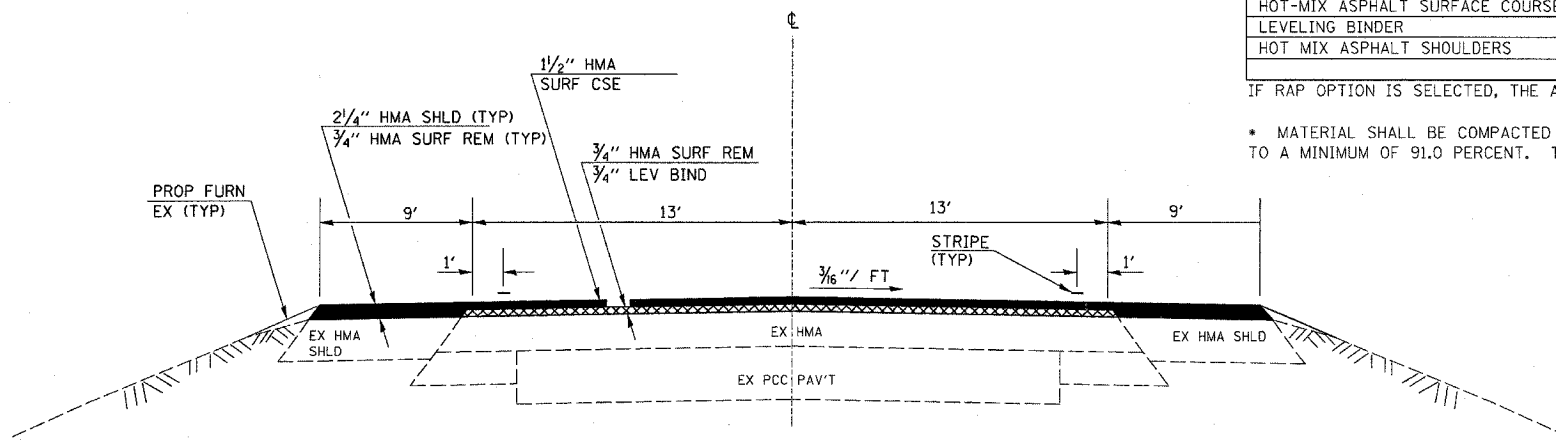


IL 17 PROP TYPICAL SECTION
STA 4+44.47 TO STA 302+73

MIX DESIGN							
MIX	PG GRADE	MAX % RAP ALLOWABLE	DESIGN AIR VOIDS	MIX COMPOSITION	FRICTION AGG	PLANT CONTROL LIMITS	DENSITY CONTROL
HOT-MIX ASPHALT SURFACE COURSE	PG 64-22	10%	4.0% @N70	1L 12.5 OR IL 9.5	MIXTURE C	CLASS I	CORRELATION
LEVELING BINDER	PG 64-22	15%	4.0% @N70	1L 9.5		CLASS I	
HOT MIX ASPHALT SHOULDERS	PG 64-22	15%	3.0% @N50	1L 12.5 OR IL 9.5	MIXTURE C	CLASS I	*

IF RAP OPTION IS SELECTED, THE ASPHALT CEMENT GRADE MAY NEED TO BE ADJUSTED. THIS WILL BE DETERMINED BY THE ENGINEER

* MATERIAL SHALL BE COMPACTED TO 93-97 PERCENT OF THE MAXIMUM THEORETICAL DENSITY, EXCEPT THAT THE BOTTOM LIFT SHALL BE COMPACTED TO A MINIMUM OF 91.0 PERCENT. THE MAXIMUM THEORETICAL DENSITY SHALL BE DETERMINED FROM THE MOVING AVERAGE AS SPECIFICATION.



IL 17 PROP TYPICAL SECTION
STA 302+73 TO STA 309+34
STA 328+50 TO 342+00

OMISSIONS:
SN 053-0146 - STA 184+54.38 TO 185+84.4
SN 053-0147 - STA 238+40 TO 249+85
SN 053-0150 - STA 322+02.47 TO 324+39.61
SN 053-0151 - STA 407+26.03 TO 408+41.97

FAP RTE	SECTION	COUNTY	TOTAL SHEETS	SHEET NO
41	(15)RS-3	LIVINGSTON	16	6
STA		TO STA		
FED ROAD DIST NO	ILLINOIS	FED AID PROJECT		

CONTRACT NO. 66421

MAINLINE SCHEDULE

LOCATION		LENGTH	RESURF AREA	HMA SURF CSE, MIX "C", N70	LEVEL BINDER (MM)	HMA SURF REM 3/4"	HMA SURF REM 1 1/2"	COLD MILL	HMA SURF REM (BUTT JT)	TEMP RAMP	BIT MAT (PR CT)	AGG (PR CT)	MIX FOR CRACKS JTS & FLGWYS	LEVEL BINDER (HM)	HMA SHLD	AGG SHLD
STA TO STA		FOOT	SQ YD	TON	TON	SQ YD	SQ YD	SQ YD	SQ YD	SQ YD	GALLON	TON	TON	TON	TON	TON
-1+18 TO 4+44.40	CURB & GUTTER AREA AT IL 47	562.4	3654.7	307.0			3654.7			53.3	292	7.3	1.1	1.8		
4+44.40 TO 5+04.40	HMA TRANSITION	60	200.0	16.8	8.4	200.0				93.3	16	0.4	0.1	0.1		15.9
5+04.40 TO 8+74		369.6	1232.0	103.5	51.7	1232.0				574.9	99	2.5	0.4	0.6		98.2
8+74 TO 8+90	SN 053-2011 (BOX CULVERT)	16	53.3	4.5	2.2	53.3				24.9	4	0.1	0.0	0.0		4.3
8+90 TO 183+94.60		17504.6	58348.7	4901.3	2450.6	58348.7				27229.4	4668	116.7	17.5	29.2		4651.7
183+64.38 TO 184+24.38	BUTT JOINT	60	200.0	16.8	8.4	100.0				93.3	16	0.4	0.1	0.1		15.9
184+54.38 TO 185+84.40	OMISSION S.N. 053-0146															
185+84.40 TO 186+44.40	BUTT JOINT	60	200.0	16.8	8.4	100.0				93.3	16	0.4	0.1	0.1		15.9
186+44.40 TO 237+80		5135.6	17118.7	1438.0	719.0	17118.7				7988.7	1369	34.2	5.1	8.6		1364.7
237+80 TO 238+40	BUTT JOINT	60	200.0	16.8	8.4	100.0				93.3	16	0.4	0.1	0.1		15.9
238+40 TO 249+85	OMISSION S.N. 053-0147															
249+85 TO 250+45	BUTT JOINT	60	200.0	16.8	8.4	100.0				93.3	16	0.4	0.1	0.1		15.9
250+45 TO 302+73		5228	17426.7	1463.8	731.9	17426.7				8132.4	1394	34.9	5.2	8.7		1389.3
302+73 TO 309+34		661	1909.6	160.4	80.2	3231.6					259	6.5	0.6	1.6	166.6	
309+34 TO 321+42.47		1208.47	3491.1	293.3	146.6	3491.1					279	7.0	1.0	1.7		103.2
321+42.47 TO 322+02.47	BUTT JOINT	60	173.3	14.6	7.3	86.7				86.7	14	0.3	0.1	0.1		5.1
322+02.47 TO 324+39.61	OMISSION S.N. 053-0150															
324+39.61 TO 324+99.61	BUTT JOINT	60	173.3	14.6	7.3	86.7				86.7	14	0.3	0.1	0.1		5.1
324+99.61 TO 328+50		350.39	1012.2	85.0	42.5	1012.2					81	2.0	0.3	0.5		29.9
328+50 TO 342+00		1350	3900.0	327.6	163.8	6600.0					528	13.2	1.2	3.3	340.2	
342+00 TO 406+66.03		6466.03	18679.6	1569.1	784.5	18679.6					1494	37.4	5.6	9.3		552.3
406+66.03 TO 407+26.03	BUTT JOINT	60	173.3	14.6	7.3	86.7				86.7	14	0.3	0.1	0.1		5.1
407+26.03 TO 408+41.97	OMISSION S.N. 053-0151															
408+41.97 TO 409+01.97	BUTT JOINT	60	173.3	14.6	7.3	86.7				86.7	14	0.3	0.1	0.1		5.1
409+01.97 TO 428+00		1898.03	5483.2	460.6	230.3	5483.2					439	11.0	1.6	2.7		162.1
428+00 TO 428+60	BUTT JOINT	60	173.3	14.6	7.3	86.7				86.7	14	0.3	0.1	0.1		5.1
TOTAL				11271.1	5481.8	133710.6	3654.7	44416.8	833.5	192.1	11056	276.3	40.6	69.0	506.8	8460.7

OMISSIONS:
 SN 053-0146 - STA 184+54.38 TO 185+84.4
 SN 053-0147 - STA 238+40 TO 249+85
 SN 053-0150 - STA 322+02.47 TO 324+39.61
 SN 053-0151 - STA 407+26.03 TO 408+41.97

ILLINOIS DEPARTMENT OF TRANSPORTATION

SCHEDULES

REVISIONS	
NAME	DATE

SCALE: VERT.
 HORIZ.
 DATE
 DRAWN BY
 CHECKED BY

DATE TIME: 01/10/2001 10:00:00 AM

FAP R/T E	SECTION	COUNTY	TOTAL SHEETS	SHEET NO
41	(15)RS-3	LIVINGSTON	16	7
STA	TO STA			
FED ROAD DIST NO	ILLINOIS	FED AID PROJECT		
CONTRACT NO. 66421				

SIDEROAD AND ENTRANCE SCHEDULE												
SIDEROAD OR DESCRIPTION	STA	SIDE	EXIST MAT	WIDTH	AREA	INC	BIT	AGG	TEMP	HMA	PCC	AGG
						HMA SURF	MAT'L (PR CT)	(PR CT)	RAMP	SURF REM BUTT JT	SURF REM BUTT JT	SURF TY B
				FOOT	SQ YD	TON	GAL	TON	SQ YD	SQ YD	SQ YD	TON
JOHN ST	6+55	RT	HMA	26	130	10.9	10.4	0.3	14.4	57.8		
BANNON ST	11+40	RT	HMA	26	130	10.9	10.4	0.3	14.4	57.8		
PE	14+00	RT	AGG	14	27	2.3	10.1	0.1				1.0
CE	16+00	RT	CONC	20	110	9.2	8.8	0.2	11.1		44.4	
PE	25+41	RT	AGG	14	27	2.3	10.1	0.1				1.0
PE	35+26	LT	AGG	28	42	3.5	15.8	0.1				2.0
CE	34+60	RT	HMA	50	67	5.6	5.4	0.1	22.2	22.2		
CE	36+00	RT	AGG	32	47	3.9	17.6	0.1				2.3
PE	66+98	LT	AGG	20	33	2.8	12.4	0.1				1.4
PE	71+04	RT	AGG	20	33	2.8	12.4	0.1				1.4
PE	73+50	RT	AGG	20	33	2.8	12.4	0.1				1.4
CE	74+10	LT	AGG	20	33	2.8	12.4	0.1				1.4
PE	87+07	LT	AGG	20	33	2.8	12.4	0.1				1.4
2900 E RD (TR 244)	106+40	RT	HMA	20	110	9.2	8.8	0.2	11.1	44.4		
PE	107+43	LT	HMA	36	51	4.3	4.1	0.1		16.0		
PE	126+93	RT	HMA	25	39	3.3	3.1	0.1		11.1		
PE	127+78	RT	AGG	18	31	2.6	11.6	0.1				1.3
PE	131+12	RT	HMA	26	40	3.4	3.2	0.1		11.6		
PE	132+75	RT	HMA	20	33	2.8	2.6	0.1		8.9		
PE	134+35	RT	HMA	25	39	3.3	3.1	0.1		11.1		
3000 E RD (TR 250)	159+38	RT	A3	20	110	9.2	8.8	0.2				
3000 E RD (TR 250)	159+38	LT	AGG	20	110	9.2	41.3	0.2				2.8
PE	194+97	LT	AGG	20	33	2.8	12.4	0.1				1.4
PE	197+25	LT	AGG	20	33	2.8	12.4	0.1				1.4
3100 E RD (TR 262)	201+66	RT	AGG	20	110	9.2	41.3	0.2				2.8
3100 E RD (TR 262)	201+66	LT	A3	18	103	8.7	8.2	0.2				
PE	203+14	LT	HMA	15	28	2.4	2.2	0.1		6.7		
PE	245+86	RT	AGG	20	33	2.8	12.4	0.1				1.4
3200 E RD (TR 268)	254+44	RT	HMA	20	110	9.2	8.8	0.2	11.1	44.4		
3200 E RD (TR 268)	254+44	LT	A3	18	103	8.7	8.2	0.2				
PE	260+78	RT	HMA	15	28	2.4	2.2	0.1		6.7		
3300 E RD (CAMPUS BLAIR RD)	307+95	RT	HMA	50	210	17.6	16.8	0.4	27.8	111.1		
3300 E RD (CAMPUS BLAIR RD)	307+95	LT	HMA	50	210	17.6	16.8	0.4	27.8	111.1		
PE W/ MBTO	319+49	RT	HMA/AGG	20	91	7.6	7.3	0.2				1.4
PE	320+57	LT	HMA/AGG	24	38	3.2	3.0	0.1				1.7
PE	330+40	LT	AGG	20	33	2.8	12.4	0.1				1.4
PE	331+40	RT	AGG	20	110	9.2	41.3	0.2				2.8
PE	334+70	LT	AGG	20	110	9.2	41.3	0.2				2.8
CE	349+00	LT	HMA/AGG	32	47	3.9	3.8	0.1				2.3
CE	350+60	LT	HMA/AGG	23	37	3.1	3.0	0.1				1.6
3400 E RD (TR 27)	361+38	RT	HMA/AGG	18	103	8.7	8.2	0.2	10.0	40.0		2.6
3425 E RD (TR 280)	374+54	LT	HMA	18	103	8.7	8.2	0.2	10.0	40.0		
PE	376+11	RT	HMA	14	27	2.3	2.2	0.1		6.2		
PE W/ MBTO	397+16	LT	HMA	20	89	7.5	7.1	0.2		27.1		
PE W/ MBTO	399+77	LT	HMA/AGG	20	78	6.6	6.2	0.2				1.4
3500 E RD (TR 282) RT	414+34	RT	HMA	18	103	8.7	8.2	0.2	10.0	40.0		
3500 E RD (TR 282) RT	414+34	LT	HMA	23	120	10.1	9.6	0.2	12.8	51.1		
TOTAL						285.7	540.7	7.4	182.7	725.3	44.4	42.4

REFLECTOR SCHEDULE					
STA TO STA	LOCATION	LENGTH FOOT	PRISMATIC CURB REFLECTORS EACH	RAISED REFLECT PVMT MARKER EACH	RAISED REFLECT PVMT MARKER REM EACH
-1+18.00 TO 4+44.40	IL 47 & IL 17 INTERSECTION		32	13	13
4+44.40 TO 184+ 54.38		18494.78		231	231
184+54.38 TO 185+84.40	OMISSION S.N. 053-0146				
185+84.40 TO 238+40		5255.60		66	66
238+40 TO 249+85	OMISSION S.N. 053-0147				
249+85 TO 322+02.47		7217.47	16	90	90
322+02.47 TO 324+39.61	OMISSION S.N. 053-0150				
324+39.61 TO 407+26.03		8286.42		104	104
407+26.03 TO 408+41.97	OMISSION S.N. 053-0151				
408+41.97 TO 428+30		1988.03		25	25
TOTAL			48	504	504

OMISSIONS:
 SN 053-0146 - STA 184+54.38 TO 185+84.4
 SN 053-0147 - STA 238+40 TO 249+85
 SN 053-0150 - STA 322+02.47 TO 324+39.61
 SN 053-0151 - STA 407+26.03 TO 408+41.97

REVISIONS	
NAME	DATE

ILLINOIS DEPARTMENT OF TRANSPORTATION

SCHEDULES

SCALE: VERT. _____
 HORIZ. _____

DATE _____ DRAWN BY _____
 CHECKED BY _____

DATE: 7/18/01
 BY: JAMES A. WOODSON, ENGINEER

PAVEMENT MARKING SCHEDULE									
STA TO STA	LOCATION	LENGTH FOOT	PAINT PVMT MARK WHITE 4"	PAINT PVMT MARK YELLOW 6"	THERMO PVMT MARK		THERMO PVMT MARK WHITE 8"	THERMO PVMT MARK WHITE 12"	THERMO PVMT MARK WHITE 24"
			FOOT	FOOT	FOOT	FOOT	FOOT	FOOT	FOOT
-1+18.00 TO 4+44.40	IL 47 & IL 17 INTERSECTION	562.40			173	615			136
4+44.40 TO 184+ 54.38		18009.98	36020	4502					
184+54.38 TO 185+84.40	OMISSION S.N. 053-0146								
185+84.40 TO 238+40		5255.60	10511	1314					
238+40 TO 249+85	OMISSION S.N. 053-0147								
249+85 TO 322+02.47		7217.47	14435	1804			180	60	60
322+02.47 TO 324+39.61	OMISSION S.N. 053-0150								
324+39.61 TO 407+26.03		8286.42	16573	2072					
407+26.03 TO 408+41.97	OMISSION S.N. 053-0151								
408+41.97 TO 428+30		1988.03	3976	497					
					173	615			
TOTAL			81515	10189	788		180	60	196

TEMPORARY PAVEMENT MARKING SCHEDULE									
STA TO STA	LOCATION	LENGTH FOOT	SHORT TERM PAVEMENT MARKING YELLOW	WORK ZONE PAVEMENT MARKING REMOVAL	TEMPORARY PAVEMENT MARKING 4"	TEMPORARY PAVEMENT MARKING 6"	TEMPORARY PAVEMENT MARKING 8"	TEMPORARY PAVEMENT MARKING 12"	TEMPORARY PAVEMENT MARKING 24"
			FOOT	FOOT	SQ FT	FOOT	FOOT	FOOT	FOOT
-1+18.00 TO 4+44.40	IL 47 & IL 17 INTERSECTION		141	23		788			136
4+44.40 TO 184+ 54.38		18009.98	5403	1201	36020	4502			
184+54.38 TO 185+84.40	OMISSION S.N. 053-0146								
185+84.40 TO 238+40		5255.60	1577	350	10511	1314			
238+40 TO 249+85	OMISSION S.N. 053-0147								
249+85 TO 322+02.47		7217.47	2165	481	14435	1804	180	60	60
322+02.47 TO 324+39.61	OMISSION S.N. 053-0150								
324+39.61 TO 407+26.03		8286.42	2486	552	16573	2072			
407+26.03 TO 408+41.97	OMISSION S.N. 053-0151								
408+41.97 TO 428+30		1988.03	596	132	3976	497			
TOTAL			12368	2739	81515	10977	180	60	196

SEEDING SCHEDULE									
STA	SIDE	SIDEROAD OR DESCRIPTION	LENGTH	SEEDING CL 2	FURN EXC	EROSION CONTROL BLANKET	NIT FERT NUT	PHOS FERT NUT	POT FERT NUT
				ACRE	CU YD	SQ YD	LB	LB	LB
302+73 TO 309+34	RT	HMA SHLDR	661	0.076	11.5	367	7	7	7
302+73 TO 309+35	LT	HMA SHLDR	661	0.076	11.5	367	7	7	7
328+50 TO 342+00	RT	HMA SHLDR	1350	0.155	23.4	750	14	14	14
328+50 TO 342+01	LT	HMA SHLDR	1350	0.155	23.4	750	14	14	14
6+55	RT	JOHN ST		0.011	1.1	52	1	1	1
11+40	RT	BANNON ST		0.011	1.1	52	1	1	1
106+40	RT	2900 E RD (TR 244)		0.011	1.1	52	1	1	1
106+40	LT	2900 E RD (TR 244)		0.011	1.1	52	1	1	1
159+38	RT	3000 E RD (TR 250)		0.011	1.1	52	1	1	1
159+38	LT	3000 E RD (TR 250)		0.011	1.1	52	1	1	1
201+66	RT	3100 E RD (TR 262)		0.011	1.1	52	1	1	1
201+66	LT	3100 E RD (TR 262)		0.011	1.1	52	1	1	1
254+44	RT	3200 E RD (TR 268)		0.011	1.1	52	1	1	1
254+44	LT	3200 E RD (TR 268)		0.011	1.1	52	1	1	1
307+95	RT	3300 E RD (CAMPUS BLAIR RD)		0.011	1.1	52	1	1	1
307+95	LT	3300 E RD (CAMPUS BLAIR RD)		0.011	1.1	52	1	1	1
361+38	RT	3400 E RD (TR 27)		0.011	1.1	52	1	1	1
374+54	LT	3425 E RD (TR 280)		0.011	1.1	52	1	1	1
414+34	RT	3500 E RD (TR 282) RT		0.011	1.1	52	1	1	1
414+34	LT	3500 E RD (TR 282) RT		0.011	1.1	52	1	1	1
				0.638	87.4	3066	58	58	58

OMISSIONS:
SN 053-0146 - STA 184+54.38 TO 185+84.4
SN 053-0147 - STA 238+40 TO 249+85
SN 053-0150 - STA 322+02.47 TO 324+39.61
SN 053-0151 - STA 407+26.03 TO 408+41.97

REVISIONS	
NAME	DATE

ILLINOIS DEPARTMENT OF TRANSPORTATION

SCHEDULES

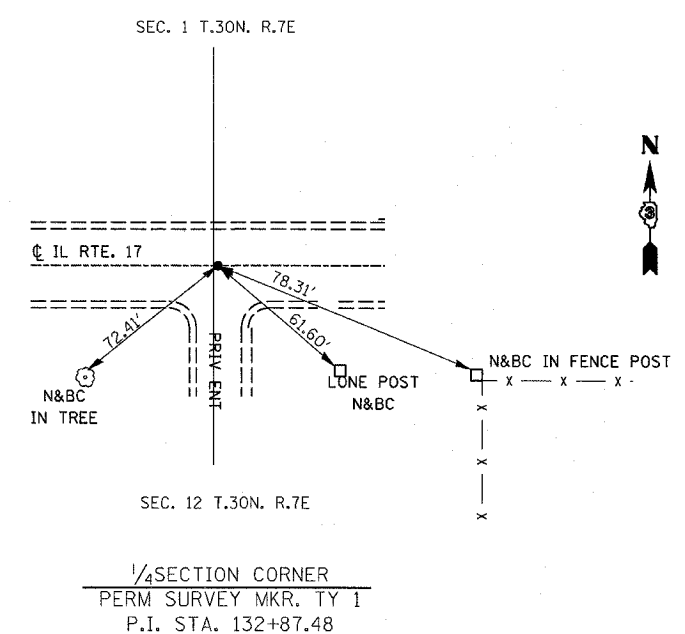
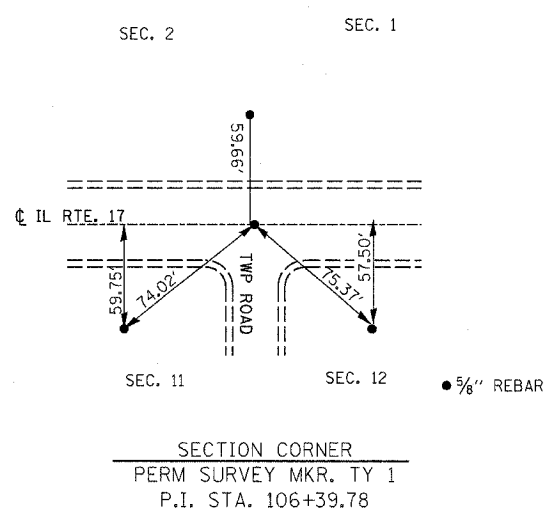
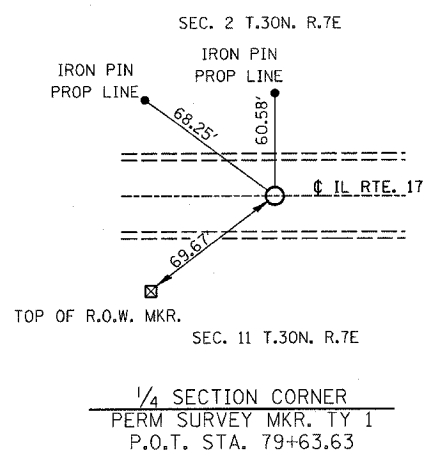
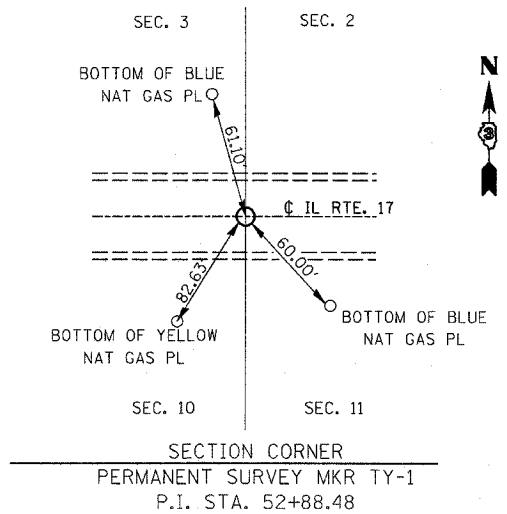
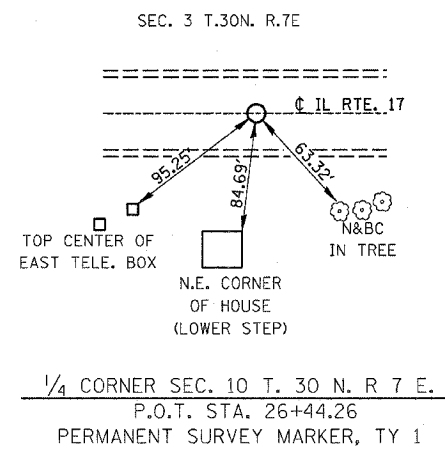
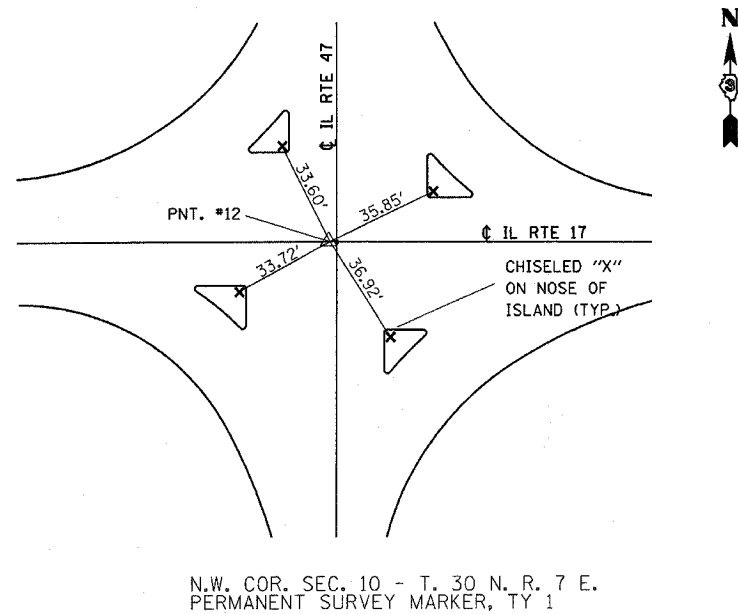
SCALE: VERT. _____
HORIZ. _____

DATE _____

DRAWN BY _____
CHECKED BY _____

DATE PLOTTED: 11/14/02 10:00 AM

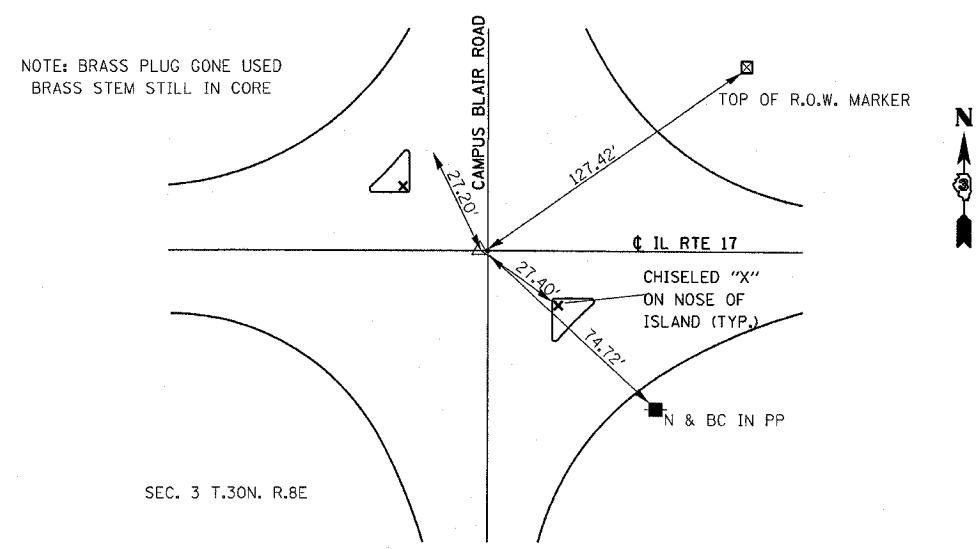
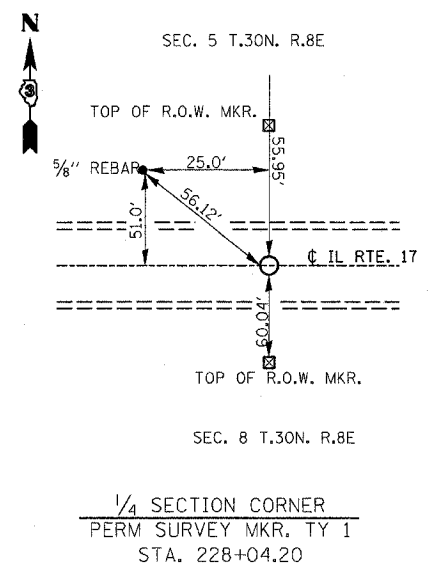
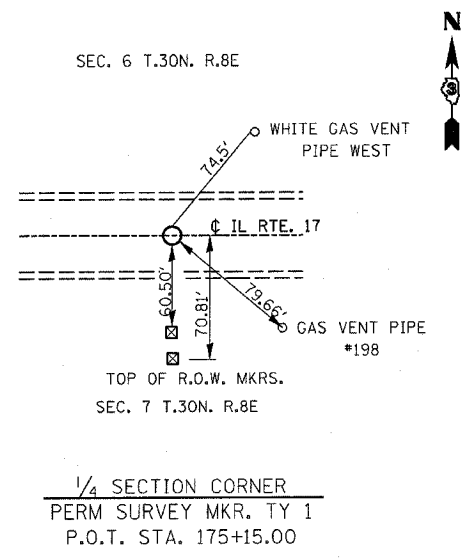
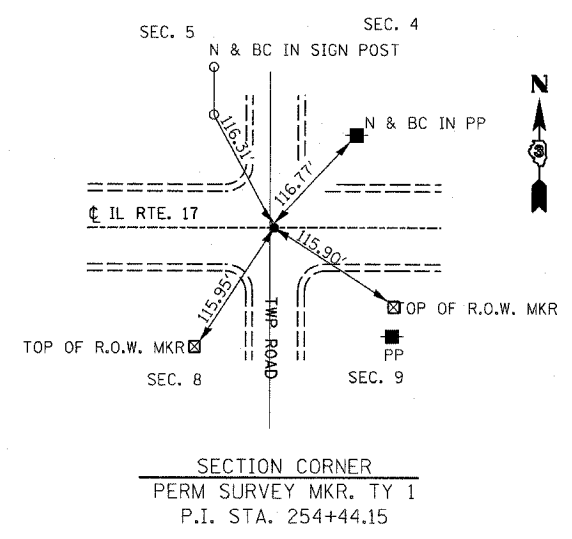
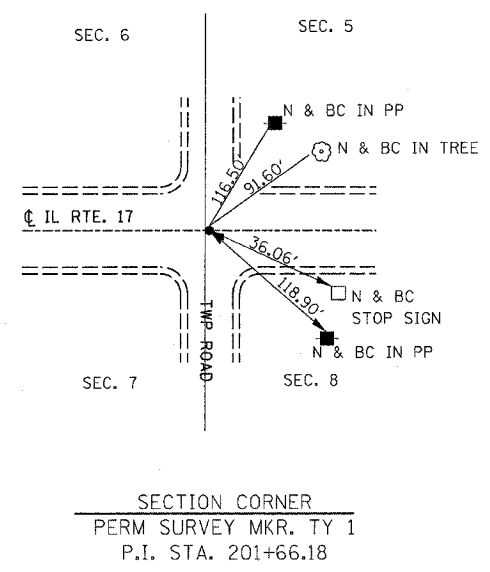
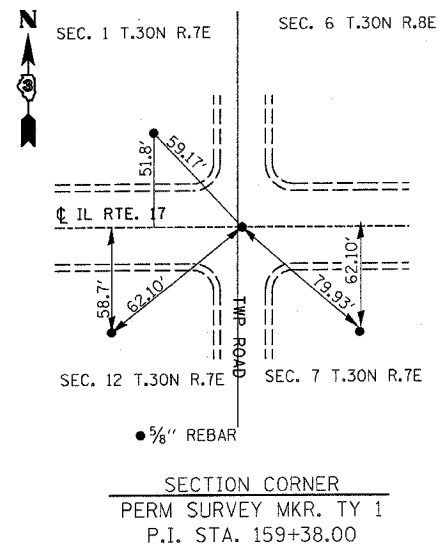
F.A.P. RTE.	SECTION	COUNTY	TOTAL SHEETS	SHEET NO.
41	(15)RS-3	LIVINGSTON	16	9
STA. _____		TO STA. _____		
FED. ROAD DIST. NO. _____		ILLINOIS FED. AID PROJECT		



NOTE: ALL TIES NOT DESIGNATED AS PERMANENT SURVEY MARKERS SHALL BE REPLACED IN KIND BY THE ENGINEER

DATE-TIME
c:\projects\led02204\defail.s.dgn

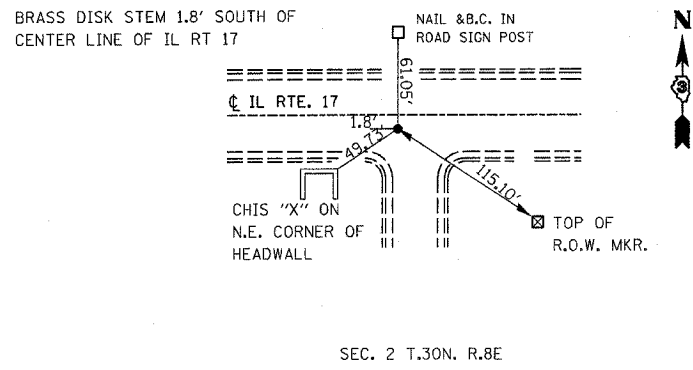
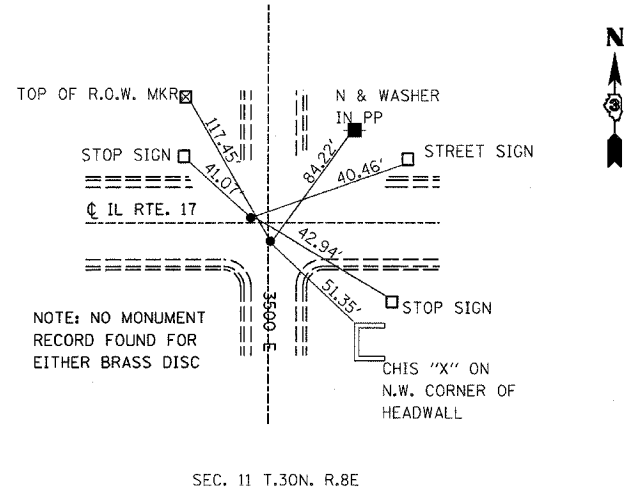
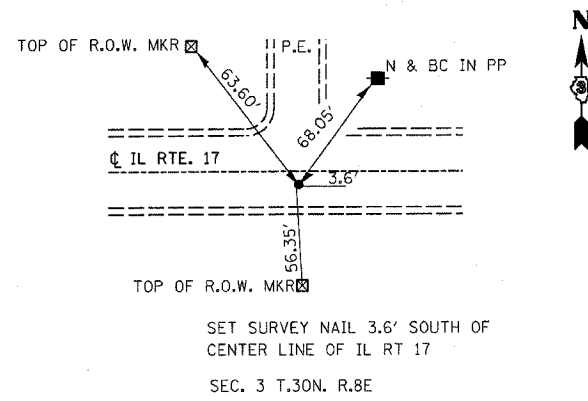
F.A.P. RTE.	SECTION	COUNTY	TOTAL SHEETS	SHEET NO.
41	(15)RS-3	LIVINGSTON	16	10
STA. _____		TO STA. _____		
FED. ROAD DIST. NO. _____		ILLINOIS FED. AID PROJECT		



NOTE: ALL TIES NOT DESIGNATED AS PERMANENT SURVEY MARKERS SHALL BE REPLACED IN KIND BY THE ENGINEER

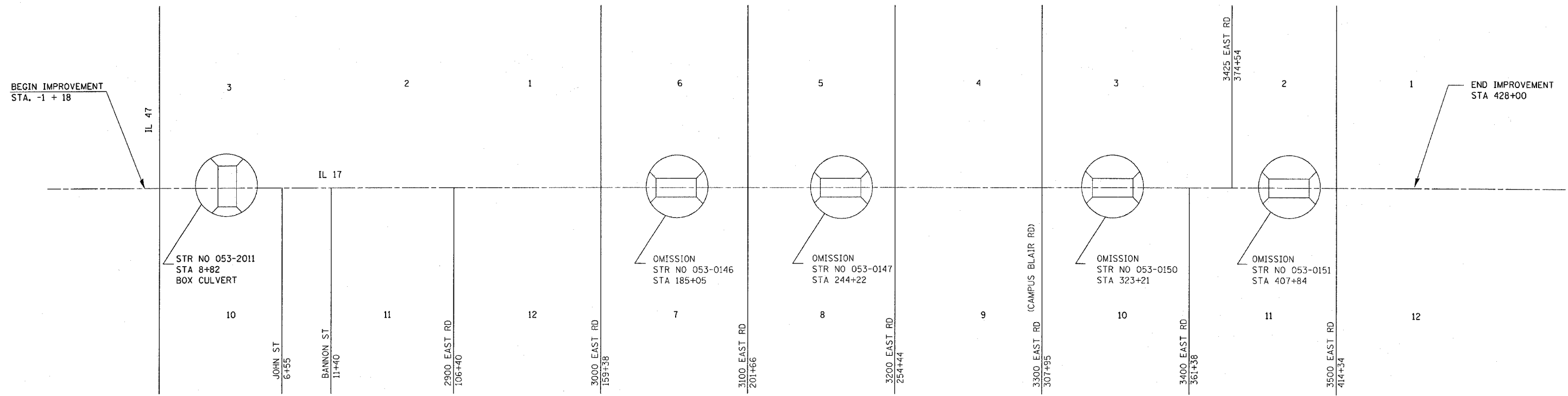
DATE-TIME
 c:\projects\ed02204\detail1.s.dgn

F.A.P. RTE.	SECTION	COUNTY	TOTAL SHEETS	SHEET NO.
41	(15)RS-3	LIVINGSTON	16	11
STA. _____		TO STA. _____		
FED. ROAD DIST. NO. _____		ILLINOIS FED. AID PROJECT		



NOTE: ALL TIES NOT DESIGNATED AS PERMANENT SURVEY MARKERS SHALL BE REPLACED IN KIND BY THE ENGINEER

FAP RTE	SECTION	COUNTY	TOTAL SHEETS	SHEET NO
41	(15)RS-3	LIVINGSTON	16	12
STA		TO STA		
FED ROAD DIST NO	ILLINOIS	FED AID PROJECT		
CONTRACT NO. 66421				



STR NO 053-2011
STA 8+82
BOX CULVERT

OMISSION
STR NO 053-0146
STA 185+05

OMISSION
STR NO 053-0147
STA 244+22

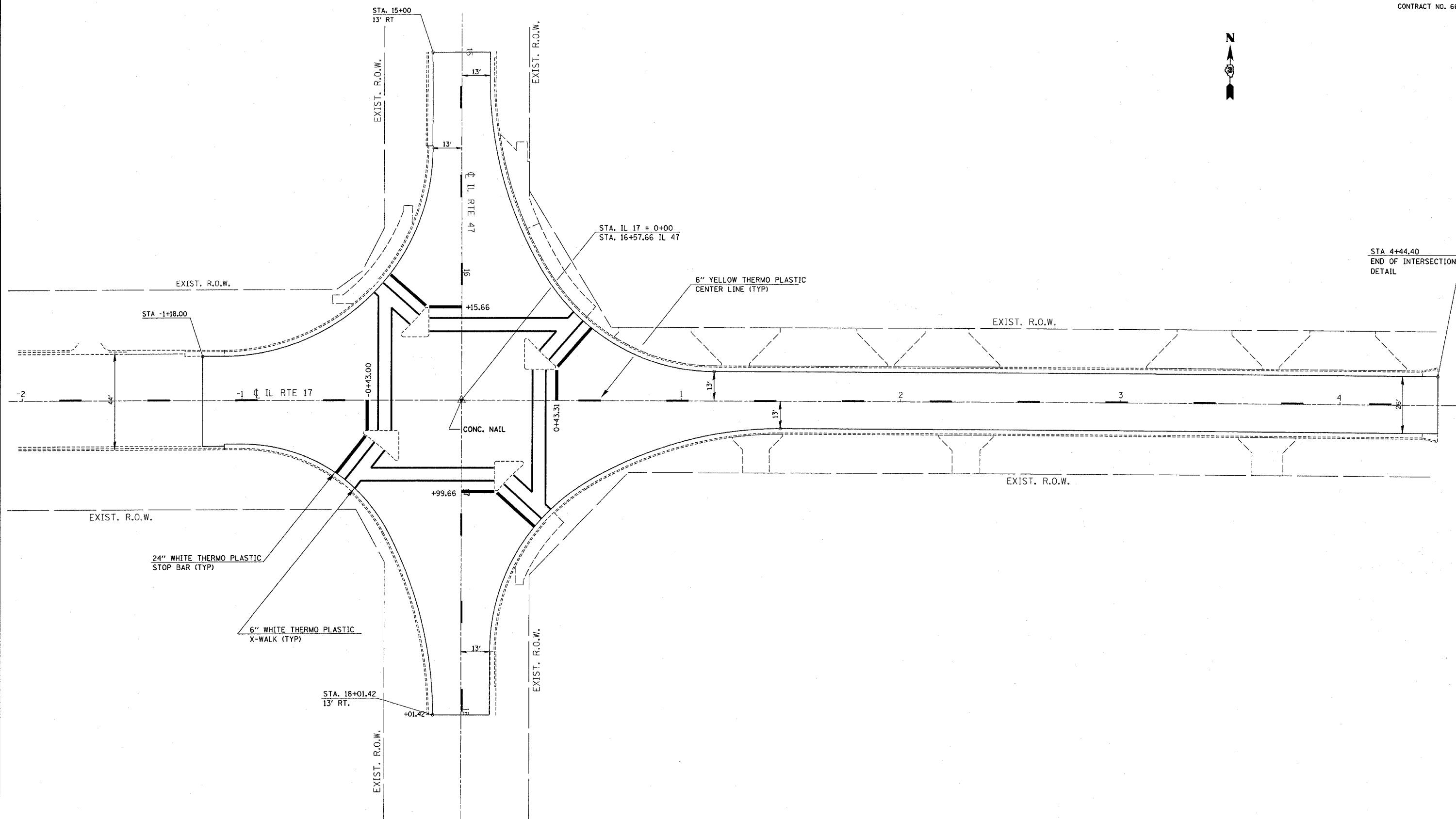
OMISSION
STR NO 053-0150
STA 323+21

OMISSION
STR NO 053-0151
STA 407+84

OMISSIONS:
 SN 053-0146 - STA 184+54.38 TO 185+84.4
 SN 053-0147 - STA 238+40 TO 249+85
 SN 053-0150 - STA 322+02.47 TO 324+39.61
 SN 053-0151 - STA 407+26.03 TO 408+41.97

DATE-TIME
c:\projects\ed02204\detail1.s.dgn

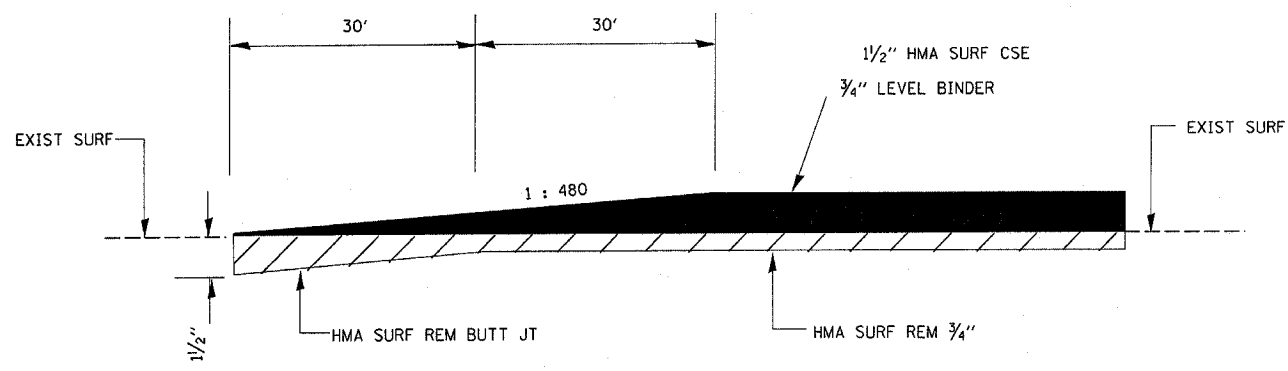
F.A.P. RTE.	SECTION	COUNTY	TOTAL SHEETS	SHEET NO.
41	(15)RS-3	LIVINGSTON	16	13
STA.		TO STA.		
FED. ROAD DIST. NO.		ILLINOIS FED. AID PROJECT		
CONTRACT NO. 66421				



DATE-TIME
 c:\projects\ed02204\details.dgn

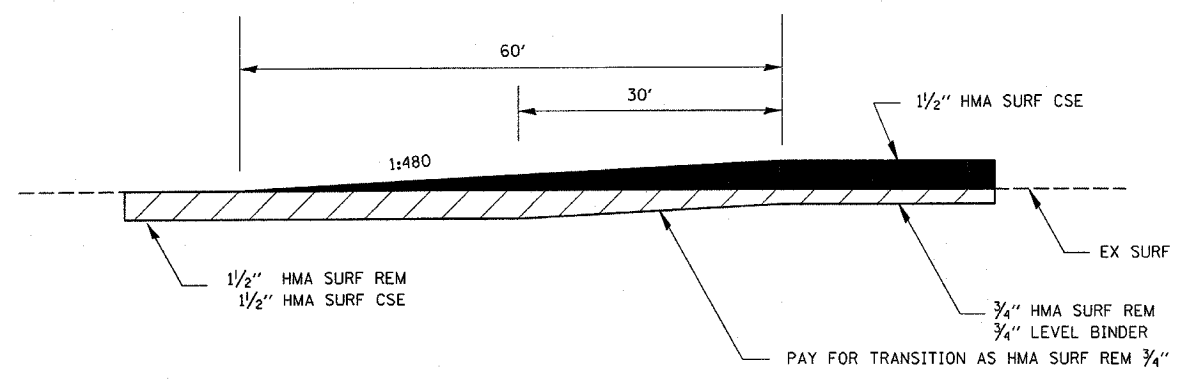
PAVEMENT MARKING DETAIL – IL 47 & IL 17

FAP RTE	SECTION	COUNTY	TOTAL SHEETS	SHEET NO
41	(15)RS-3	LIVINGSTON	16	14
STA		TO STA		
FED ROAD DIST NO	ILLINOIS	FED AID PROJECT		
CONTRACT NO. 66421				



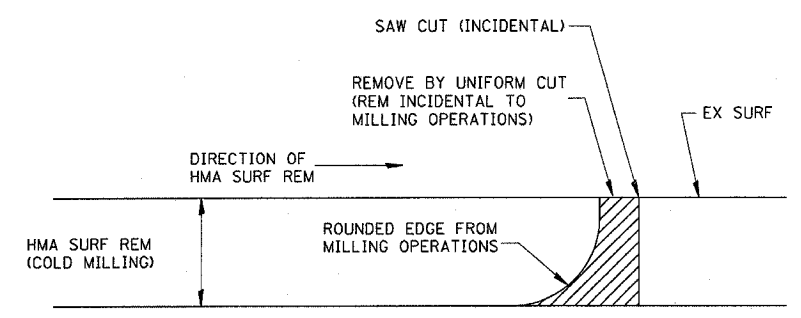
HMA SURFACE REMOVAL BUTT JOINT

- STA. 183+64.38 TO STA. 184+24.38
- STA. 185+84.40 TO STA. 186+44.40
- STA. 237+80 TO STA. 238+40
- STA. 249+85 TO STA. 250+45
- STA. 321+42.47 TO STA. 322+02.47
- STA. 324+39.61 TO STA. 324+99.61
- STA. 406+66.03 TO STA. 407+26.03
- STA. 408+41.97 TO STA. 409+01.97
- STA. 428+00 TO STA. 428+60

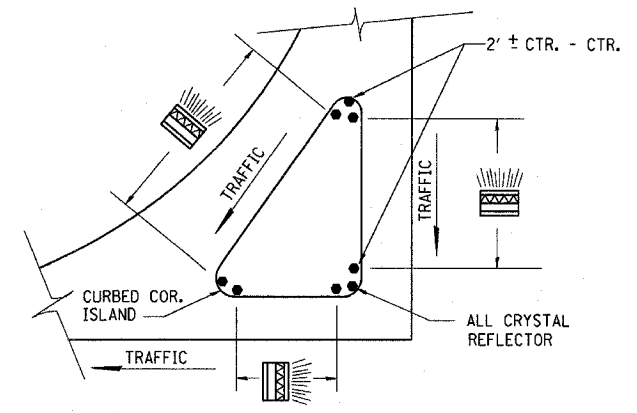


HMA TRANSITION DETAIL

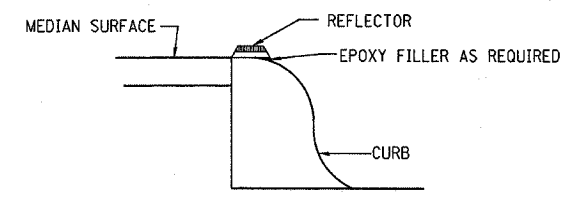
STA. 4+44.40 TO STA. 5+04.40



NOTE: WHEN MILLING OPERATIONS PRODUCE A ROUNDED EDGE THEN A SAW CUT SHALL BE USED TO MANUFACTURE A PERPENDICULAR EDGE AS SHOWN IN THE DETAIL. THE ENGINEER SHALL BE THE SOLE JUDGE CONCERNING THE USE OF THIS DETAIL



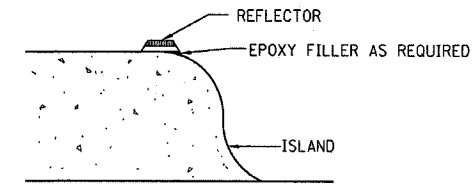
PRISMATIC REFLECTORS



SECTION VIEW

NOTES

1. PRISMATIC REFLECTORS SHALL BE MONO-DIRECTIONAL AND POSITIONED SO THAT THE REFLECTIVE FACE IS FACING THE APPROACHING TRAFFIC.
2. PRISMATIC REFLECTORS SHALL BE SECURED IN PLACE WITH AN EPOXY ADHESIVE.
3. PRISMATIC REFLECTORS SHALL BE EITHER AMBER OR CRYSTAL IN COLOR.



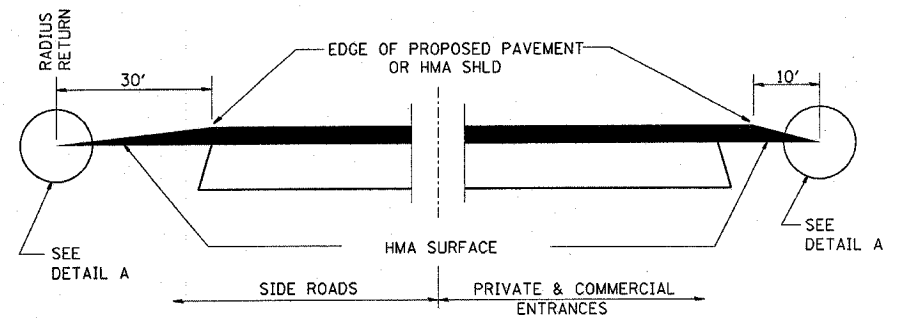
SECTION VIEW

NOTES

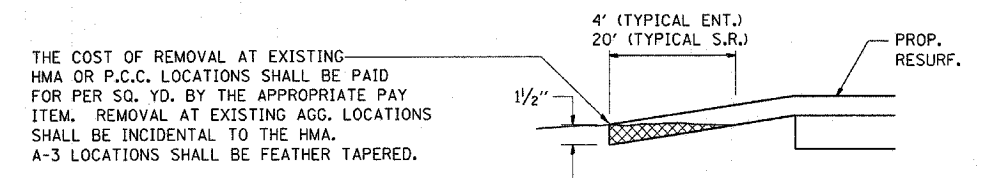
1. PRISMATIC REFLECTORS SHALL BE MONO-DIRECTIONAL AND POSITIONED SO THAT THE REFLECTIVE FACE IS FACING THE APPROACHING TRAFFIC.
2. PRISMATIC REFLECTORS SHALL BE SECURED IN PLACE WITH AN EPOXY ADHESIVE.
3. PRISMATIC REFLECTORS SHALL BE EITHER AMBER OR CRYSTAL IN COLOR.

DATE-TIME c:\projects\ed0204\detail\is.dgn

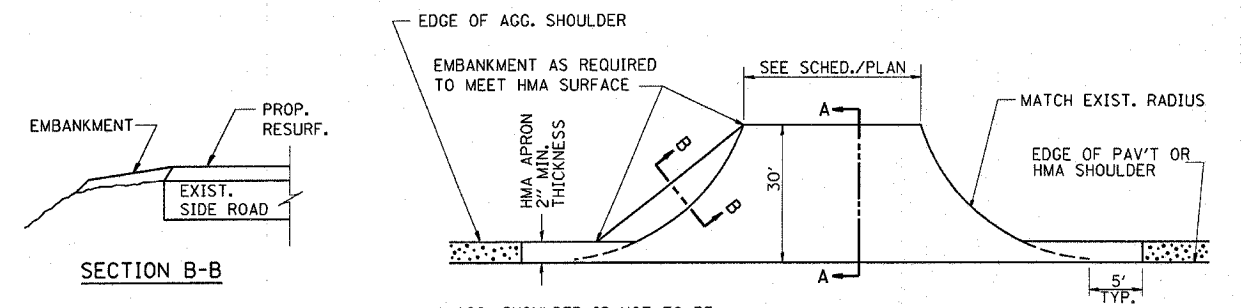
FAP RTE	SECTION	COUNTY	TOTAL SHEETS	SHEET NO
41	(15)RS-3	LIVINGSTON	16	15
STA		TO STA		
FED ROAD DIST NO		ILLINOIS FED AID PROJECT		
CONTRACT NO. 66421				



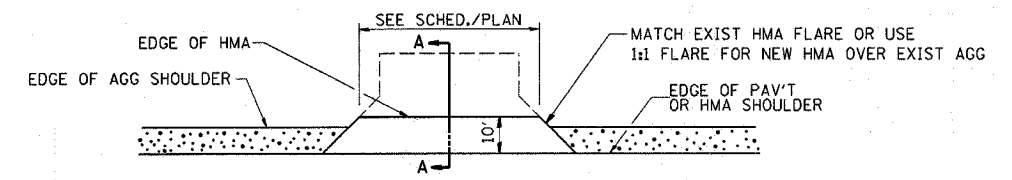
SECTION A-A
DETAILS AT ENTRANCES & SIDE ROADS



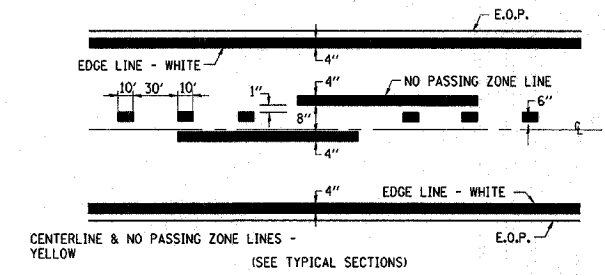
DETAIL A



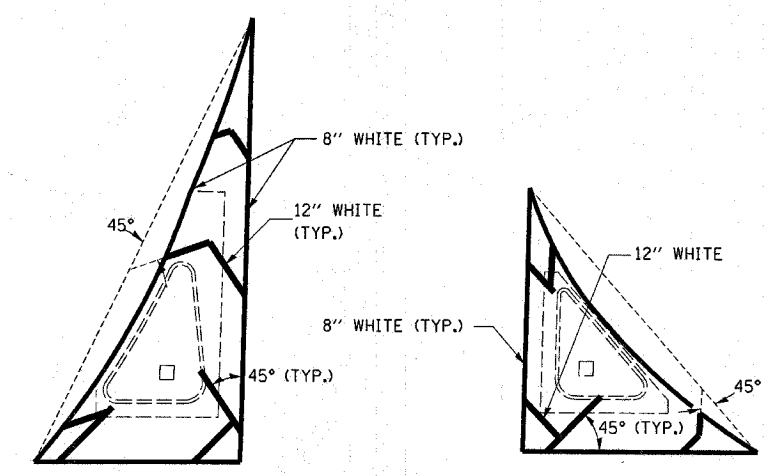
PLAN AT SIDE ROADS



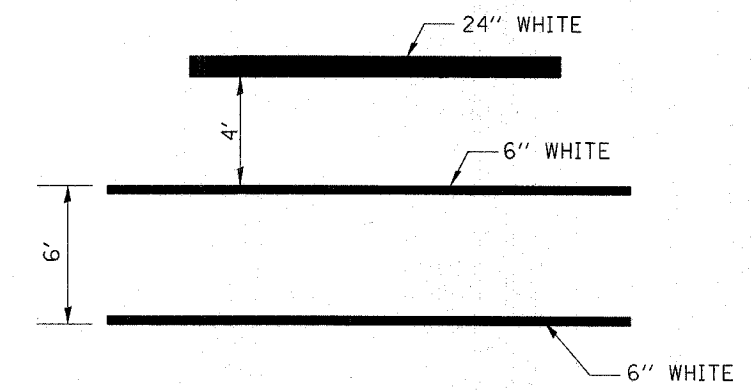
PLAN AT PRIVATE & COMMERCIAL ENTRANCES
(DO NOT RESURFACE FIELD ENTRANCES)



PAVEMENT MARKING



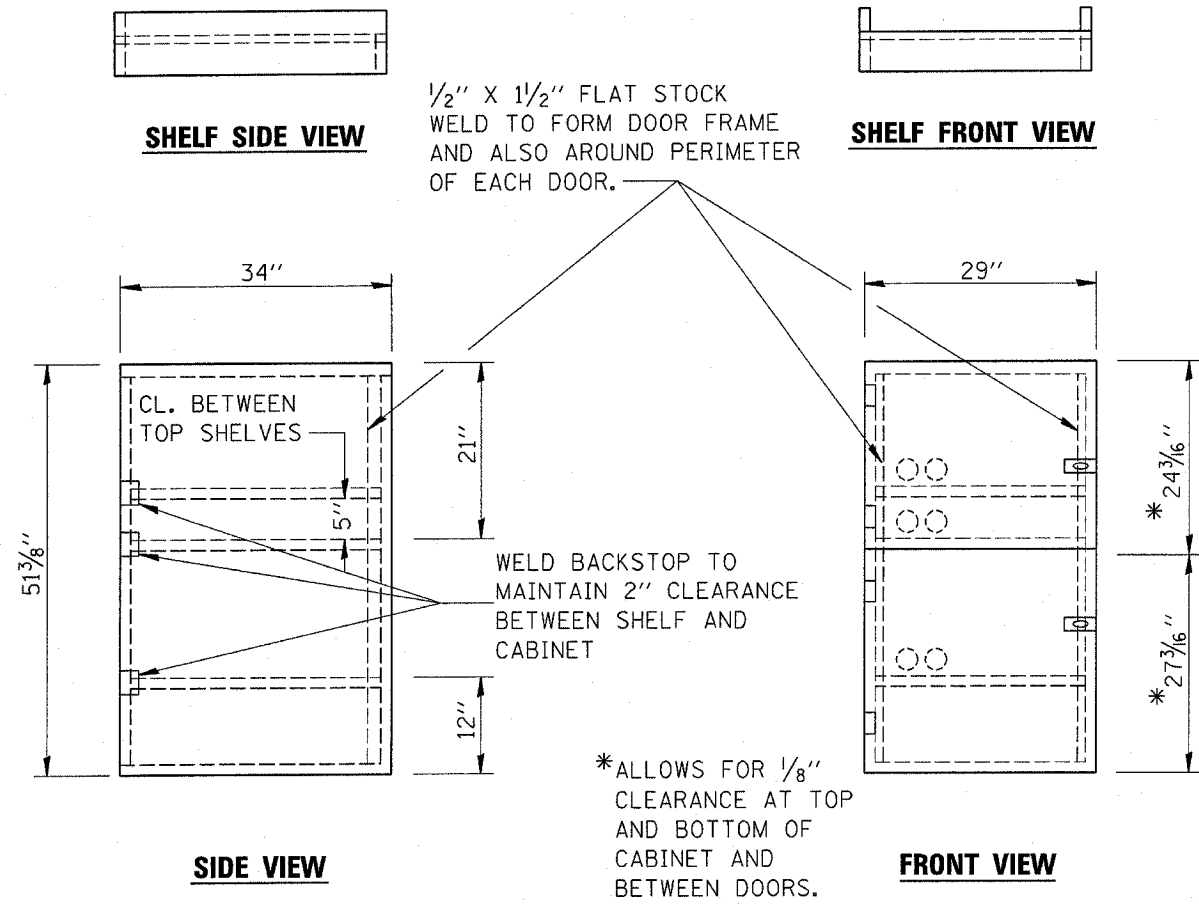
THERMOPLASTIC ISLAND DETAILS
INTERSECTION OF IL 17 & BLAIR CAMPUS RD.



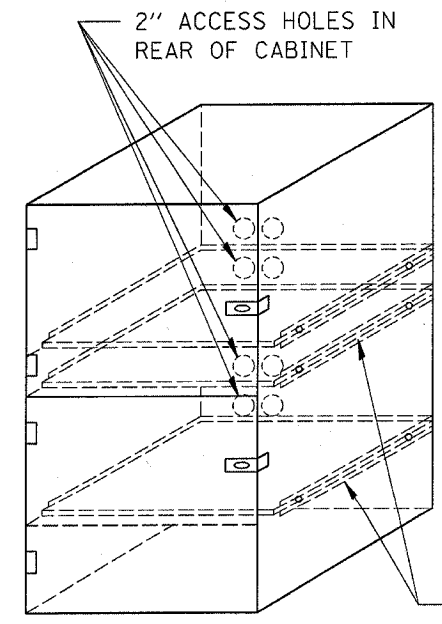
TYPICAL SPACING DETAIL FOR
CROSSWALKS AND STOP BARS

DATE-TIME
c:\projects\ed02204\detail15.dgn

F.A.P. RTE.	SECTION	COUNTY	TOTAL SHEETS	SHEET NO.
41	(15)RS-3	LIVINGSTON	16	16
STA. _____		TO STA. _____		
FED. ROAD DIST. NO. _____		ILLINOIS FED. AID PROJECT		
CONTRACT NO. 66421				



- NOTES:
1. USE 16 GAUGE STEEL FOR CABINET.
 2. THE TOP SHELF SHALL SLIDE IN OR OUT WITH THE TOP DOOR OPEN.
 3. ALL HINGES AND HASPS WILL BE WELDED TO THE CABINET.
 4. ALL EDGES SHALL BE GROUND SMOOTH.
 5. TWO (2" DIA.) ACCESS HOLES WILL BE REQUIRED FOR EACH SHELF.
 6. CABINET SHALL BE PAINTED WITH TWO COATS OF FLAT PAINT.
 7. 2 EACH MATCHING KEY PADLOCKS, WITH 3 KEYS PROVIDED, MASTER MODEL 3 T OR EQUIVALENT.
 8. 4 EACH PLAIN STEEL, NON-REMOVABLE PIN, NO HOLE 4"X4" SQUARE CORNER HINGES TO BE WELDED ON.
 9. 2 EACH EXTRA HEAVY, PLAIN STEEL, FIXED STAPLE, NO HOLE, 7 1/4 " HASPS TO BE WELDED ON.



FLAT STOCK DIMENSIONS VARY DEPENDING ON TYPE OF ROLLER ASSEMBLY.

LOCKABLE COMPUTER CABINET

DATE - TIME
c:\projects\ed02204\defal1.s.dgn