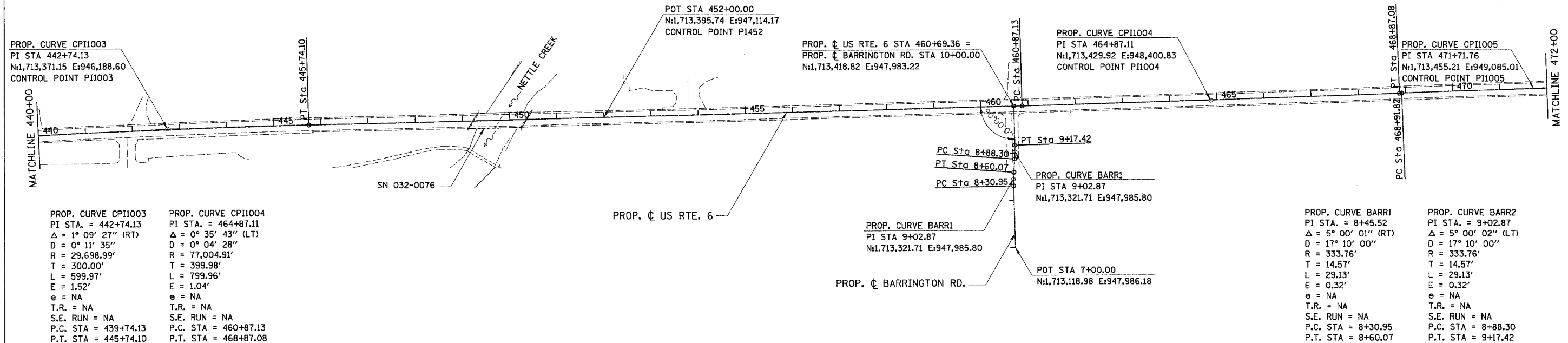


F.A.U. RTE.	SECTION	COUNTY	TOTAL SHEETS	SHEET NO.
5952	0-BR	GRUNDY	86	12
STA.		TO STA.		
FED. ROAD DIST. NO. 7		ILLINOIS FED. AID PROJECT		



PROP. CURVE CPI1003  
PI STA. = 442+74.13  
Δ = 1° 09' 27" (RT)  
D = 0° 11' 35"  
R = 29,698.99'  
T = 300.00'  
L = 599.97'  
E = 1.52'  
e = NA  
T.R. = NA  
S.E. RUN = NA  
P.C. STA = 439+74.13  
P.T. STA = 445+74.10

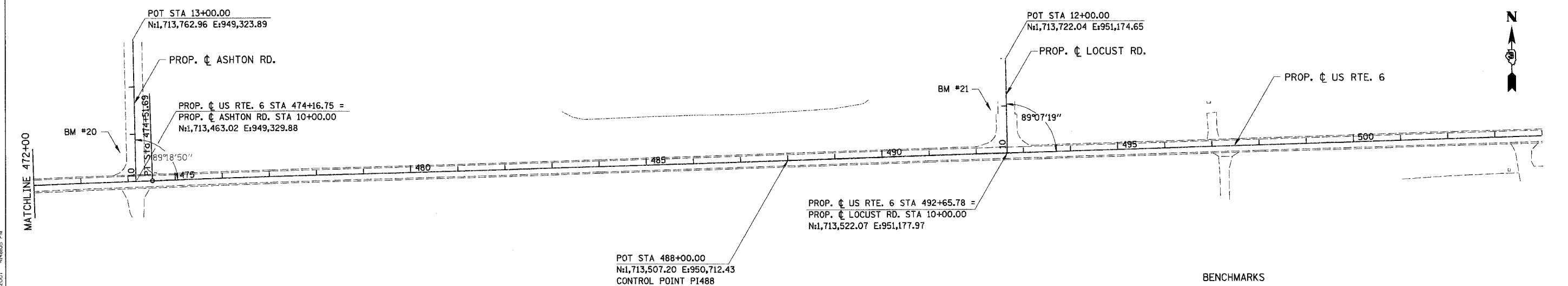
PROP. CURVE CPI1004  
PI STA. = 464+87.11  
Δ = 0° 35' 43" (LT)  
D = 0° 04' 28"  
R = 77,004.91'  
T = 399.98'  
L = 799.96'  
E = 1.04'  
e = NA  
T.R. = NA  
S.E. RUN = NA  
P.C. STA = 460+87.13  
P.T. STA = 468+87.08

PROP. CURVE BARR1  
PI STA. = 9+02.87  
N1,713,321.71 E:947,985.80

PROP. CURVE BARR2  
PI STA. = 9+02.87  
Δ = 5° 00' 02" (LT)  
D = 17° 10' 00"  
R = 333.76'  
T = 14.57'  
L = 29.13'  
E = 0.32'  
e = NA  
T.R. = NA  
S.E. RUN = NA  
P.C. STA = 8+30.95  
P.T. STA = 8+60.07

PROP. CURVE BARR1  
PI STA. = 8+45.52  
Δ = 5° 00' 01" (RT)  
D = 17° 10' 00"  
R = 333.76'  
T = 14.57'  
L = 29.13'  
E = 0.32'  
e = NA  
T.R. = NA  
S.E. RUN = NA  
P.C. STA = 8+30.95  
P.T. STA = 8+60.07

PROP. CURVE BARR2  
PI STA. = 9+02.87  
Δ = 5° 00' 02" (LT)  
D = 17° 10' 00"  
R = 333.76'  
T = 14.57'  
L = 29.13'  
E = 0.32'  
e = NA  
T.R. = NA  
S.E. RUN = NA  
P.C. STA = 8+88.30  
P.T. STA = 9+17.42



PROP. CURVE CPI1005  
PI STA. = 471+71.76  
Δ = 0° 17' 13" (RT)  
D = 0° 03' 05"  
R = 111,787.72'  
T = 279.94'  
L = 559.87'  
E = 0.35'  
e = NA  
T.R. = NA  
S.E. RUN = NA  
P.C. STA = 468+91.82  
P.T. STA = 474+51.69

**BENCHMARKS**  
BM #20: EL. 547.68 "4" ON NORTH FLANGE BOLT OF FIRE HYDRANT @ THE NW CORNER OF RTE. 6 AND ASHTON RD.  
BM #21: EL. 551.09 "4" CUT ON SE FLANGE BOLT OF FIRE HYDRANT @ NW CORNER OF RTE 6 AND LOCUST RD.

**NOTES**  
1. ALL COORDINATES ARE IN A LOCAL COORDINATE SYSTEM

REVISIONS	
NAME	DATE

ILLINOIS DEPARTMENT OF TRANSPORTATION

U.S. ROUTE 6  
ALIGNMENT AND TIES

SCALE: VERT. N.T.S.  
HORIZ. 1"=100'  
DATE 3/19/07

DRAWN BY RA  
CHECKED BY JD

BOWMAN, BARRETT & ASSOCIATES INC.  
CONSULTING ENGINEERS  
130 E. RANDOLPH STREET  
CHICAGO, ILLINOIS 60601  
JOB NO. 541



N:\S&P\Road\N\IN\66594\_M0116\_Creek\Sheet\02\_N6.dgn 3/19/2007 4:46:05 PM default