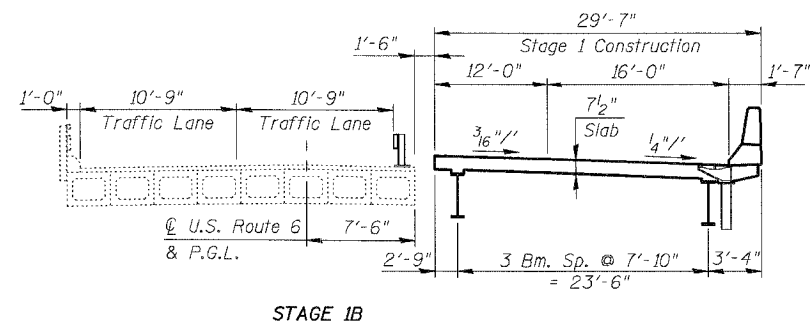
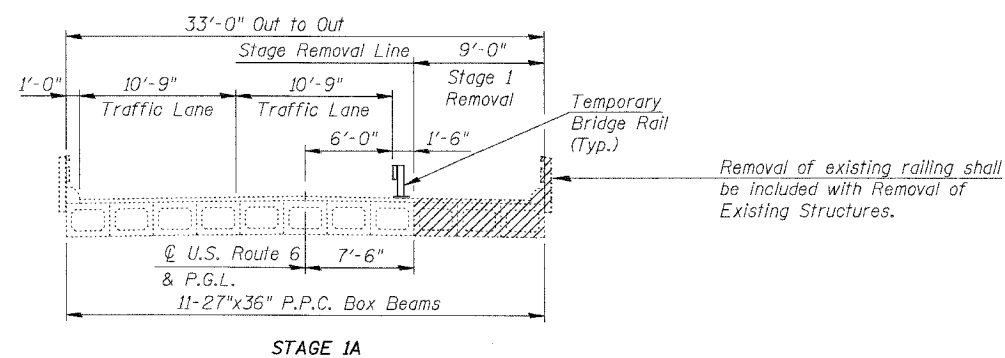
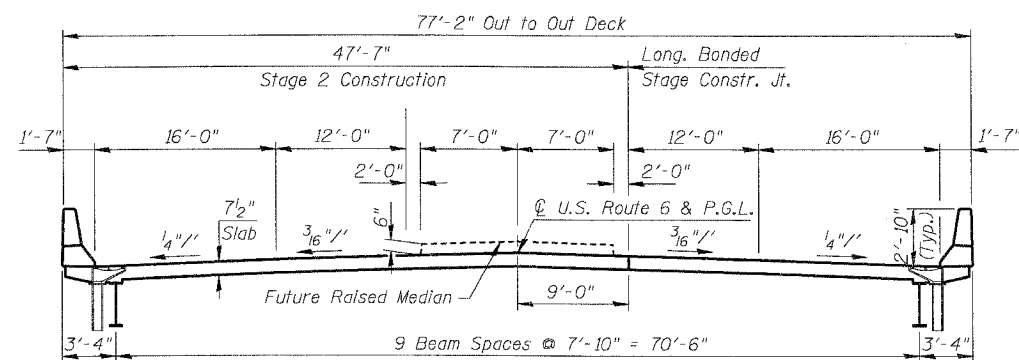
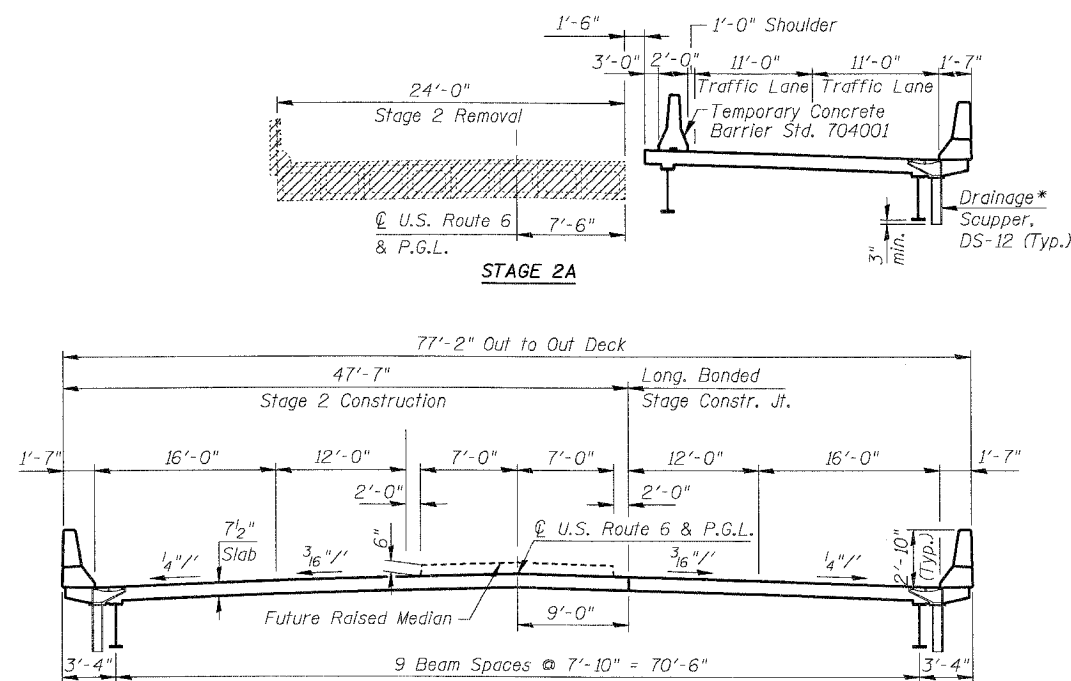


STATE OF ILLINOIS
DEPARTMENT OF TRANSPORTATION

ROUTE NO.	SECTION	COUNTY	TOTAL SHEETS	SHEET NO.	SHEET NO. S3
S.B.L.	①	GRUNDY	86	42	OF S26 SHEETS
F.A.U. 5952					
FED. ROAD DIST. NO. 7	ILLINOIS	FED. AID PROJECT			



CONSTRUCTION STAGE 1



STAGE 2B (FINAL)
CONSTRUCTION STAGE 2

PROPOSED CROSS SECTIONS (LOOKING EAST)

See Roadway Plans for Quantity of Temporary Concrete Barrier

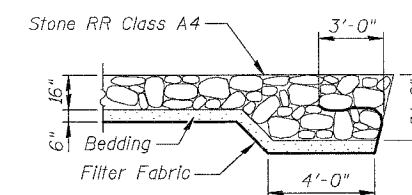
DESIGNED	UM
CHECKED	BLU
DRAWN	EBP
CHECKED	UM

DATE: 3/19/07

Removal of existing railing shall be included with Removal of Existing Structures.

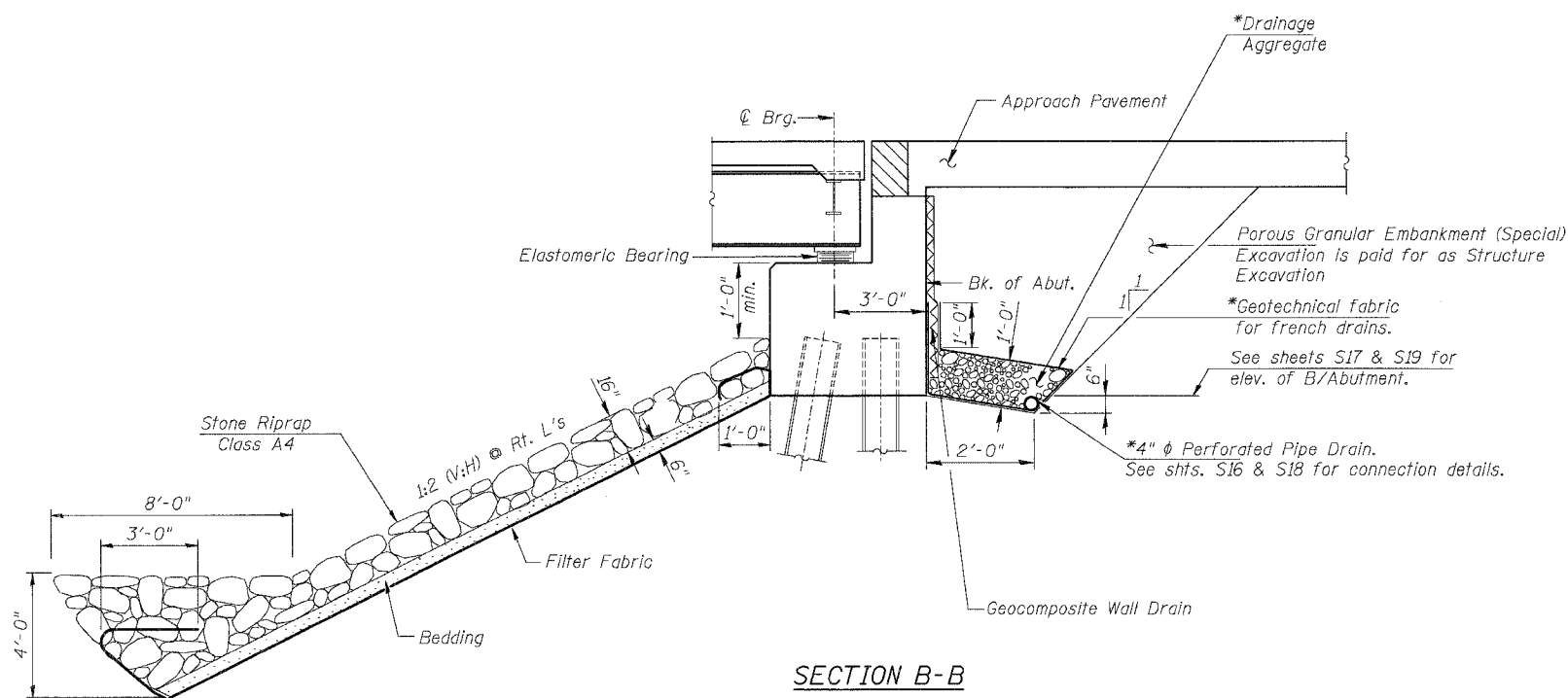
/// = Superstructure Removal

* Floor drains at all other locations



SECTION A-A

See sheet S1 for location



SECTION B-B

See sheet S1 for location

Dimensions at Right Angles

*Included in the cost of Pipe Underdrains for Structures

CONSTRUCTION STAGING & DETAILS

U.S. ROUTE 6 OVER
NETTLE CREEK
FAU 5952-SEC. Q-BR
GRUNDY COUNTY
STATION 449+79.12
S.N. 032-0107

BOWMAN, BARRETT
& ASSOCIATES INC.
CONSULTING ENGINEERS
130 E. RANDOLPH STREET
CHICAGO, ILLINOIS 60601
JOB NO. 541

