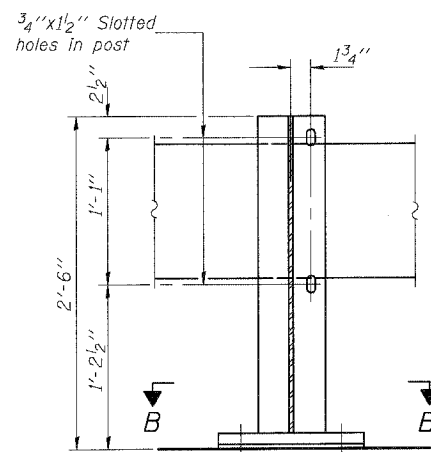


| | | | | |
|-----------------------|---------|--------|--------|-----------|
| ROUTE NO. | SECTION | COUNTY | SHEETS | SHEET NO. |
| FAU 5952 | Q | GRUNDY | 86 | 44 |
| FED. ROAD DIST. NO. 7 | | | | |
| ILLINOIS | | | | |
| FED. AID PROJECT | | | | |

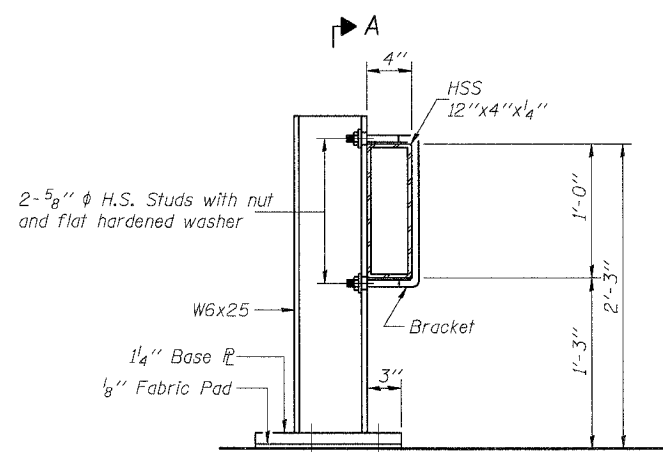
SHEET NO. 55 OF 526 SHEETS

Q-BR

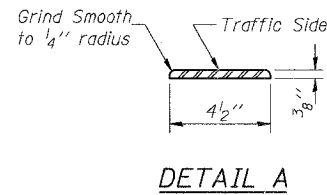
STATE OF ILLINOIS
DEPARTMENT OF TRANSPORTATION



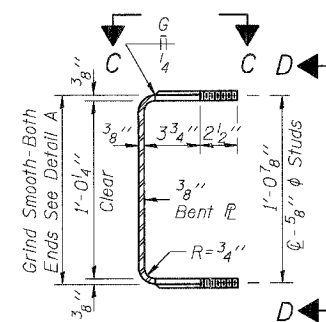
SECTION A-A



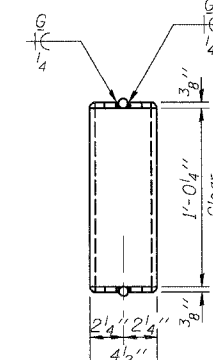
SECTION AT RAIL POST



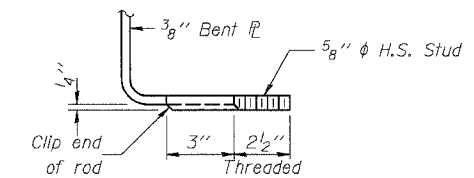
DETAIL A



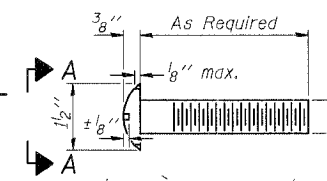
SECTION THRU BRACKET



VIEW D-D



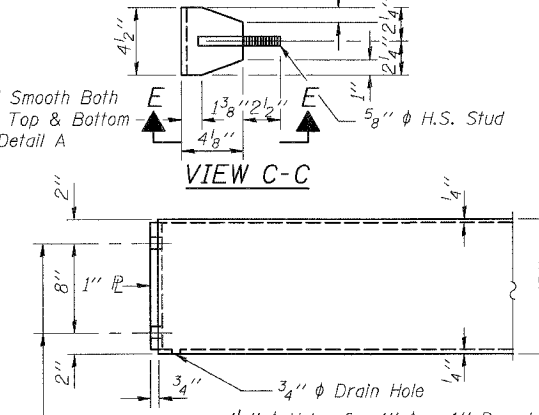
VIEW E-E



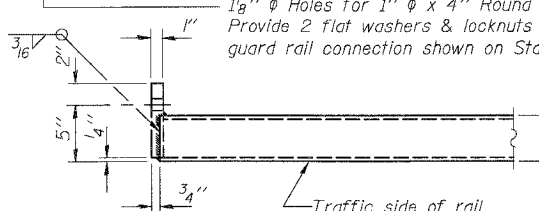
VIEW A-A
ROUND HEAD BOLT



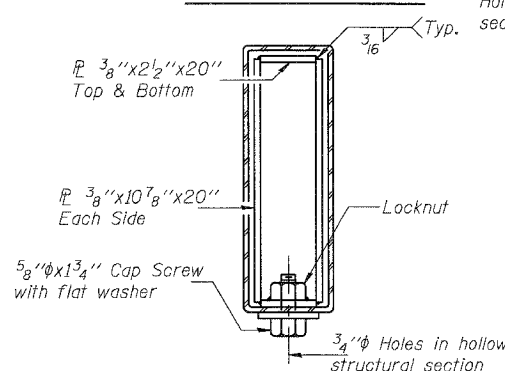
VIEW C-C



END OF RAIL DETAILS

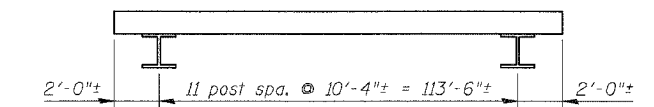


RAIL SPLICE CONNECTION
AT EXPANSION JT.



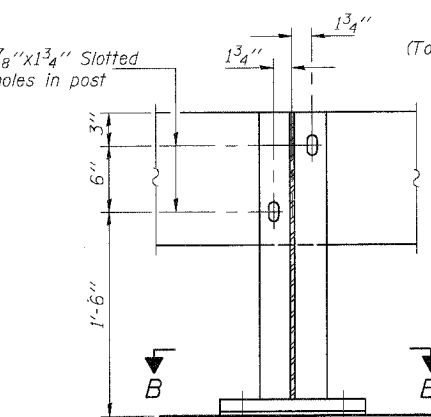
SECTION AT RAIL SPLICE

Anchorage Details shown are provided for information only. Contractor will submit proper anchorage details and calculations based on existing deck beam conditions, sealed by a Licensed Structural Engineer prior to installation. Cost included with Steel Railing (Temporary).



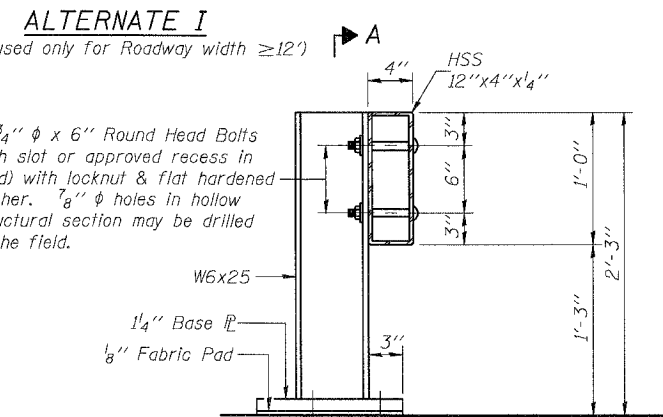
TEMPORARY BRIDGE RAIL POST SPACING

Space posts to miss existing bridge joints

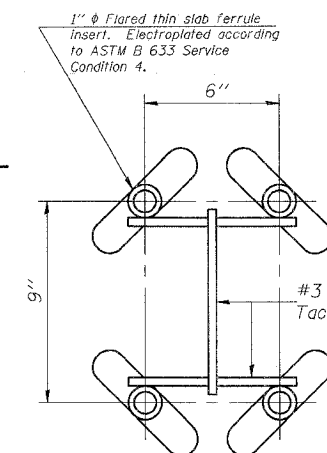


SECTION A-A

ALTERNATE I
(To be used only for Roadway width $\geq 12'$)



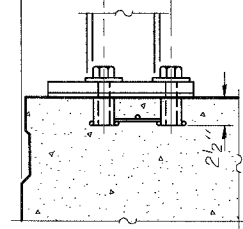
SECTION AT RAIL POST



INSERT DETAIL

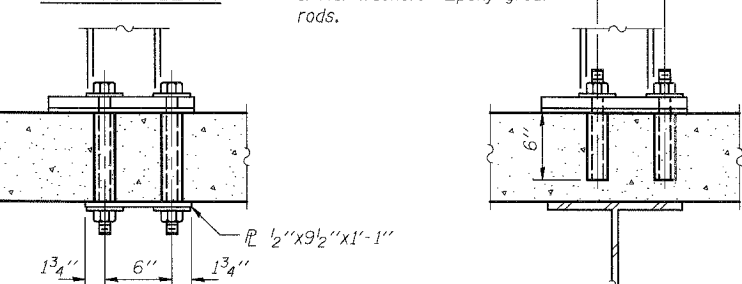
ALTERNATE II

4 - Wing type threaded inserts for 1" ϕ H.S. bolts with flat hardened washer. Grout holes after removal.



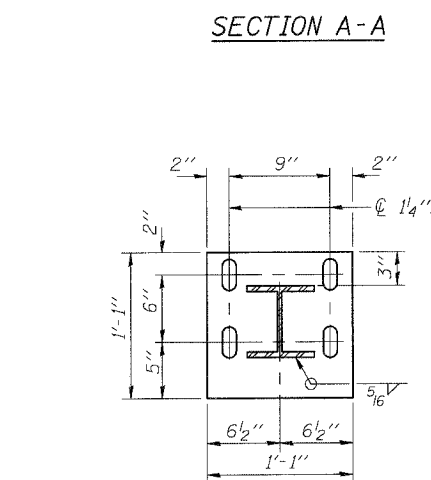
P.P.C. DECK BEAMS

* Drill 4-1 1/4" ϕ holes for 1" ϕ threaded rods with hex nut & flat washer. Epoxy grout rods.



* 4-1 1/4" ϕ Formed holes for 1" ϕ H.S. bolts with nut & flat washers. Grout holes in deck after bolt removal.

NEW & EXISTING DECKS
ANCHORAGE DETAILS



SECTION B-B

* Drilled holes for existing deck.

BILL OF MATERIAL

| Item | Unit | Quantity |
|---------------------------|------|----------|
| Steel Railing (Temporary) | Foot | 117.5 |

| | |
|----------|-----|
| DESIGNED | UM |
| CHECKED | BLU |
| DRAWN | UM |
| CHECKED | BLU |

R-25 10-31-02

BOWMAN, BARRETT & ASSOCIATES INC.
CONSULTING ENGINEERS
130 E. RANDOLPH STREET
CHICAGO, ILLINOIS 60601
JOB NO. 541



PLAN-BOTT. SPLICE \bar{r}
TYPICAL

TEMPORARY BRIDGE RAIL
U.S. ROUTE 6 OVER
NETTLE CREEK
FAU 5952-SEC. Q-BR
GRUNDY COUNTY
STATION 449+79.12
S.N. 032-0107