

STATE OF ILLINOIS
DEPARTMENT OF TRANSPORTATION

ROUTE NO.	SECTION	COUNTY	TOTAL SHEETS	SHEET NO.	SHEET NO. 110
S.S.L.	①	GRUNDY	86	49	OF 526 SHEETS
F.A.L. DIVISION					
FED. ROAD DIST. NO. 7	ILLINOIS	FED. AID PROJECT			

① Q-BR

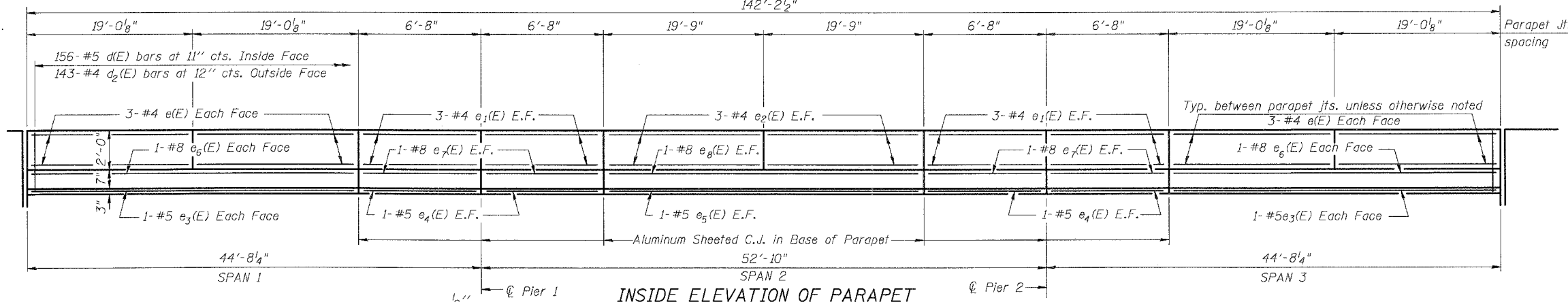
**SUPERSTRUCTURE
BILL OF MATERIAL**

Bar	No.	Size	Length	Shape
*** a(E)	310	#5	28'-11"	—
*** a ₁ (E)	228	#5	28'-6"	—
a ₂ (E)	4	#5	33'-6"	—
*** a ₃ (E)	310	#5	47'-1"	—
*** a ₄ (E)	228	#5	46'-10"	—
a ₅ (E)	8	#5	28'-9"	—
a ₆ (E)	308	#6	4'-6"	—
a ₇ (E)	16	#5	2'-0"	—
b(E)	328	#5	37'-2"	—
b ₁ (E)	156	#6	30'-0"	—
b ₂ (E)	435	#5	30'-2"	—
d(E)	312	#5	3'-0"	┌
d ₁ (E)	312	#5	2'-5"	┌
d ₂ (E)	286	#4	3'-0"	┌
d ₃ (E)	286	#4	4'-2"	┌
x(E)	152	#5	4'-1"	┌
e(E)	48	#4	18'-9"	—
e ₁ (E)	48	#4	6'-5"	—
e ₂ (E)	24	#4	19'-6"	—
e ₃ (E)	8	#5	37'-9"	—
e ₄ (E)	16	#5	6'-5"	—
e ₅ (E)	4	#5	39'-3"	—
e ₆ (E)	8	#8	37'-9"	—
e ₇ (E)	16	#8	6'-5"	—
e ₈ (E)	4	#8	39'-3"	—
Reinforcement Bars, Epoxy Coated	Pound		85,400	
Concrete Superstructure	Cu. Yds.		322.3	
Bar Splicers	Each		542	
Protective Coat	Sq. Yd.		1301	
Bridge Deck Grooving	Sq. Yd.		1620	
Floor Drains	Each		10	
Preformed Joint Strip Seal	Foot		18.3	

Notes:
Reinforcement bars designated (E) shall be epoxy coated.

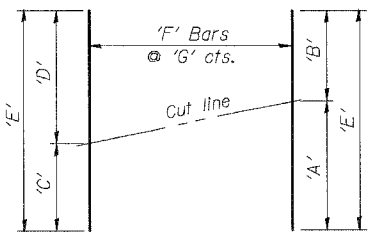
SUPERSTRUCTURE DETAILS

U.S. ROUTE 6 OVER
NETTLE CREEK
FAU 5952-SEC. Q-BR
GRUNDY COUNTY
STATION 449+79.12
S.N. 032-0107

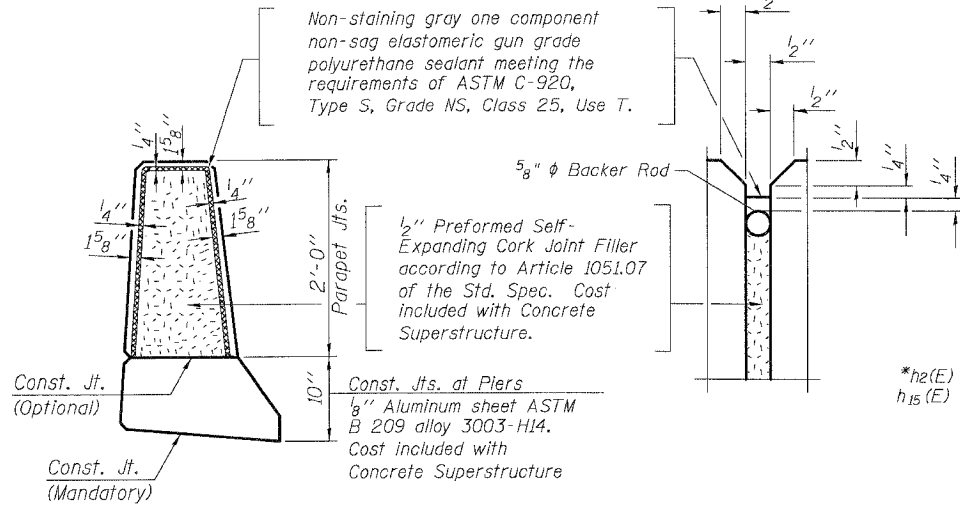


INSIDE ELEVATION OF PARAPET

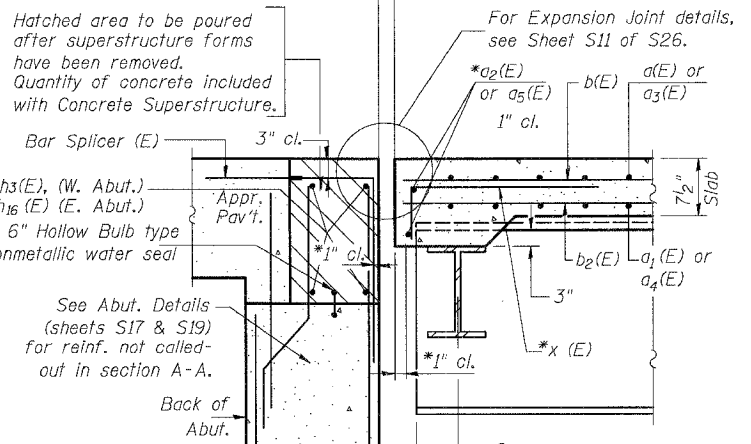
O.F. - Outside Face
I.F. - Inside Face
E.F. - Each Face



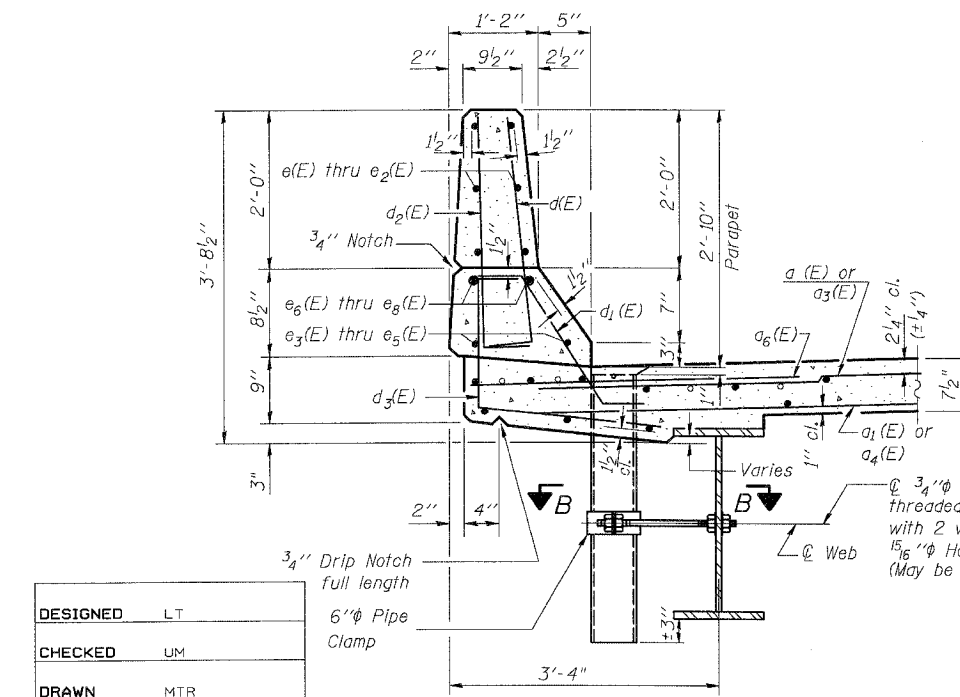
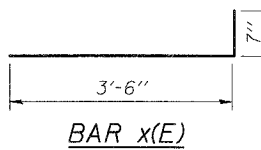
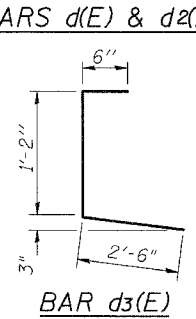
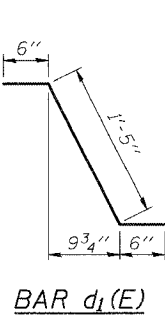
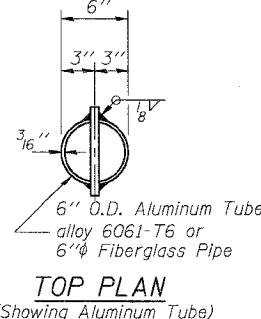
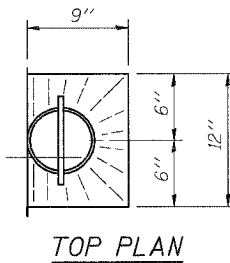
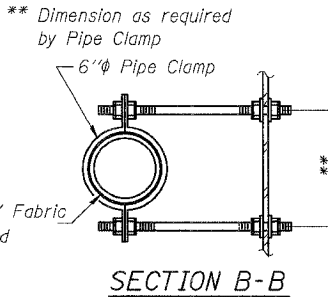
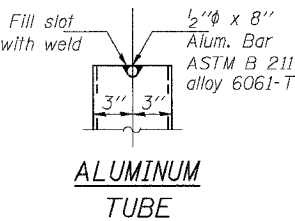
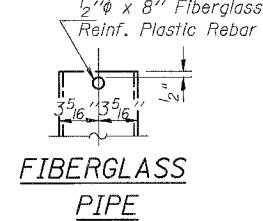
Bar	'A'	'B'	'C'	'D'	'E'	'F'	'G'
a(E)	27'-5"	1'-6"	11"	28'-0"	28'-11"	40	5 1/2"
a ₁ (E)	27'-0"	1'-6"	11"	27'-7"	28'-6"	30	7 1/2"
a ₃ (E)	44'-11"	2'-2"	1'-1"	46'-0"	47'-1"	67	5 1/2"
a ₄ (E)	45'-9"	1'-1"	1'-8"	45'-2"	46'-10"	49	7 1/2"



PARAPET JOINT DETAILS



SECTION A-A



SECTION THRU PARAPET

Notes:
The exterior surfaces of the floor drains shall be painted with the finish coat as specified in the special provisions for Cleaning and Painting New Metal Structures. The exterior surfaces of the drains shall be cleaned according to Steel Structures Painting Council's Spec. SSPC-SP1 prior to painting. Fiberglass pipe shall conform to ASTM D 2996, with short-time rupture strength hoop tensile stress of 30,000 p.s.i. minimum.

BOWMAN, BARRETT & ASSOCIATES INC.
CONSULTING ENGINEERS
130 E. RANDOLPH STREET
CHICAGO, ILLINOIS 60601
JOB NO. 541



DESIGNED	LT
CHECKED	UM
DRAWN	MTR
CHECKED	BLU

DATE: 3/19/07