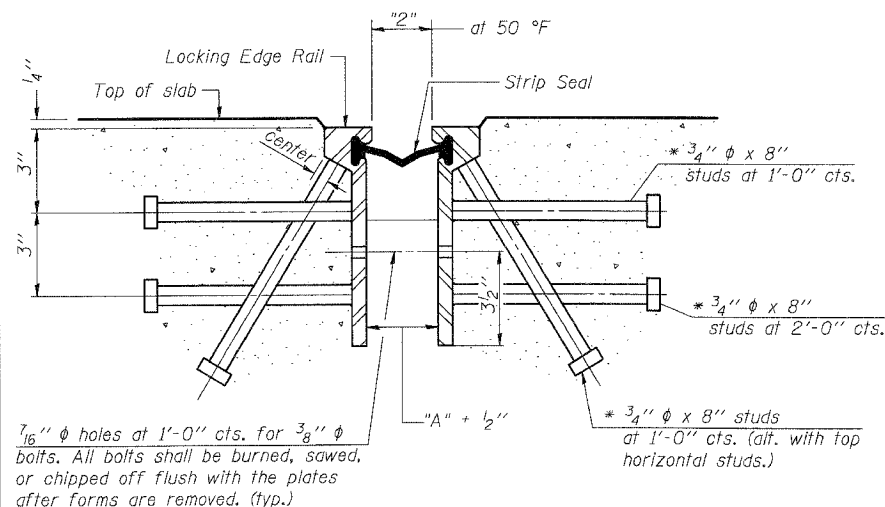


STATE OF ILLINOIS
DEPARTMENT OF TRANSPORTATION

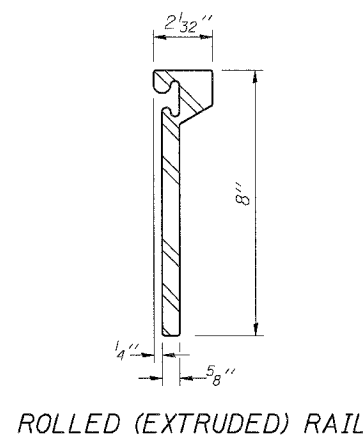
ROUTE NO.	SECTION	COUNTY	TOTAL SHEETS	% SET	SHEET NO. S11
S. S. I.	Q	GRUNDY	86	50	OF 526 SHEETS
F. A. I. 5702					
FED. ROAD DIST. NO. 7	ILLINOIS	FED. AID PROJECT-			

Q-BR

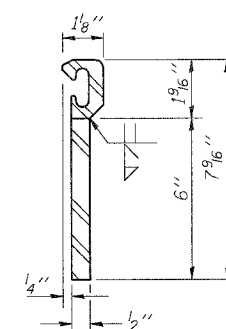


SECTION THRU ROLLED RAIL EXP. JOINT

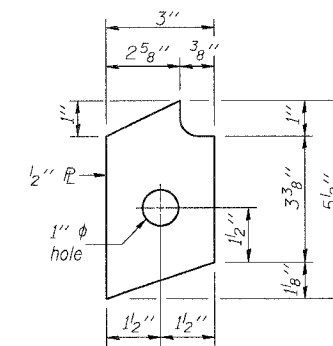
(906 Studs Required)



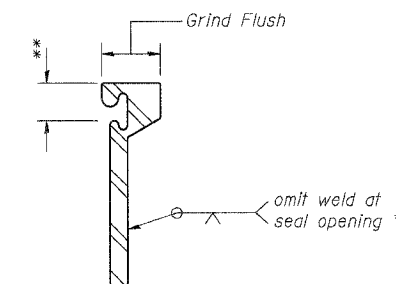
ROLLED (EXTRUDED) RAIL



WELDED RAIL



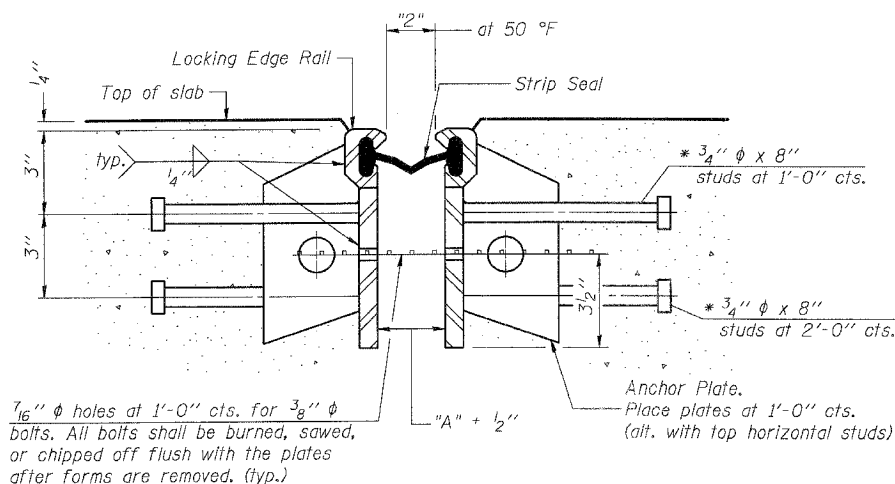
ANCHOR PLATE
(for welded rail)



LOCKING EDGE RAIL SPLICE

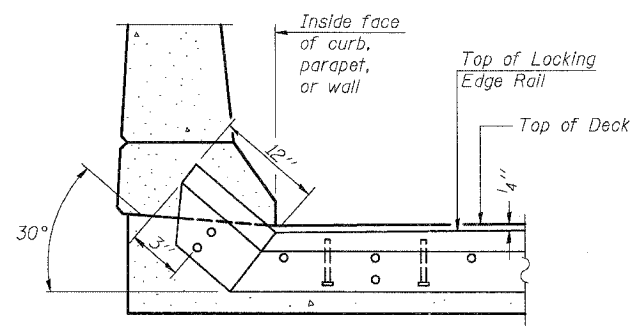
The inside of the locking edge rail groove shall be free of weld residue.

EXPANSION JOINT LOCKING EDGE RAIL DETAILS

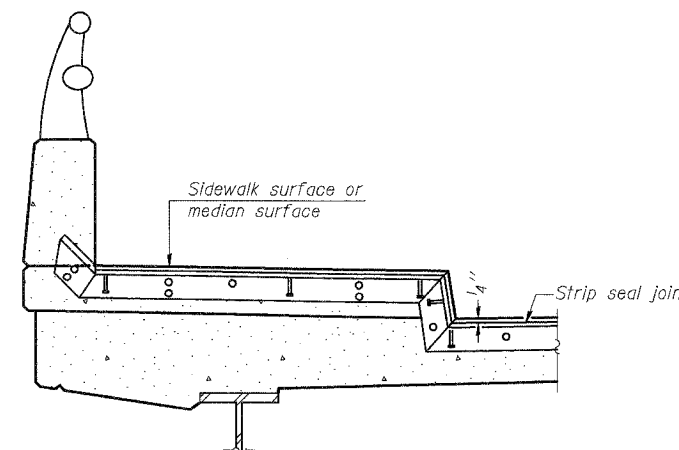


SECTION THRU WELDED RAIL EXP. JOINT

(550 Studs Required)
(356 Anchor Plates Required)



AT CURB, PARAPET, OR WALL



AT SIDEWALK OR MEDIAN*

* Shorter plates with a single row of studs at 12" centers may be necessary on medians which are shallower than 9". See manufacturer's recommendation.

TYPICAL END TREATMENTS

GENERAL NOTES

The strip seal shall be made continuous and shall have a minimum thickness of 1/4". The configuration of the strip seal shall match the configuration of the Locking Edge Rails.

The height and thickness of the Locking Edge Rails shown are minimum dimensions. The actual configuration of the Locking Edge Rails and matching strip seal may vary from manufacturer to manufacturer. Flanged edge rails will not be allowed.

Locking Edge Rails may be spliced at slope discontinuities and stage construction joints.

The manufacturer's recommended installation methods shall be followed.

STRIP SEAL EXPANSION JOINT

ASSEMBLY DETAILS

U.S. ROUTE 6 OVER

NETTLE CREEK

FAU 5952-SEC. Q-BR

GRUNDY COUNTY

STATION 449+79.12

S.N. 032-0107

DESIGNED
CHECKED
DRAWN
CHECKED

EJ-BJS 9-01-03

* Granular or solid flux filled headed studs conforming to Article 1006.32 of the Std. Specs., automatically end welded.

BOWMAN, BARRETT
& ASSOCIATES INC.
CONSULTING ENGINEERS
130 E. RANDOLPH STREET
CHICAGO, ILLINOIS 60601
JOB NO. 541

