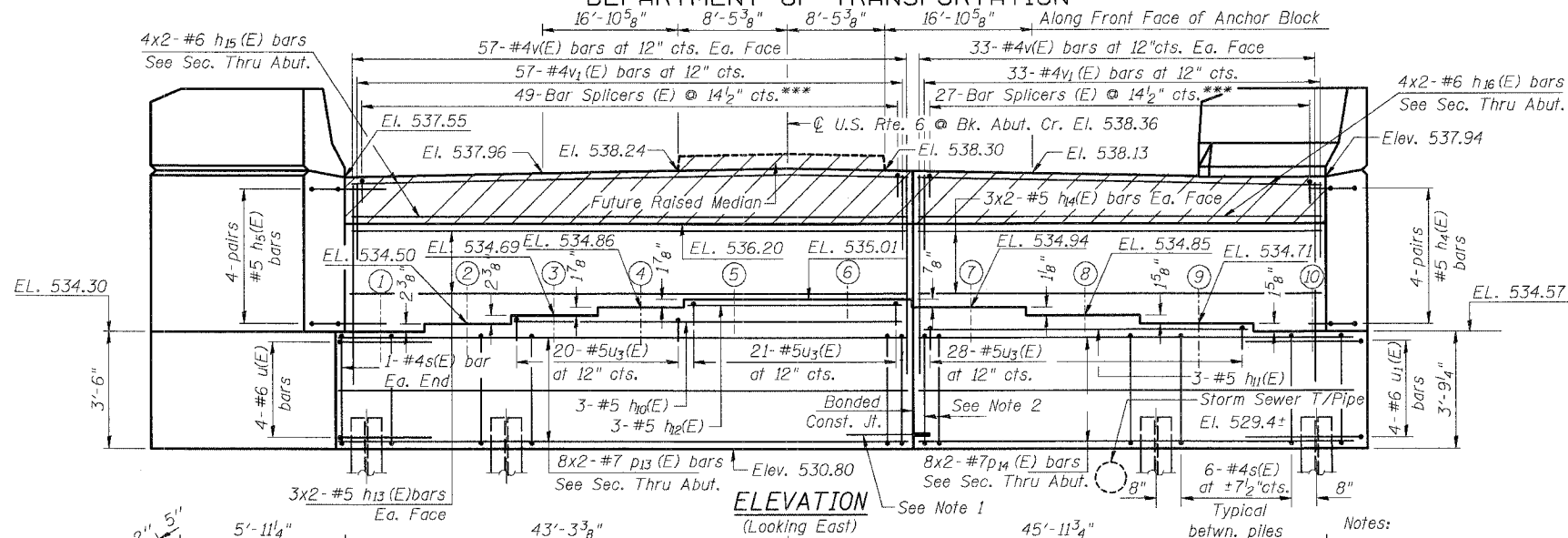


ROUTE NO.	SECTION	COUNTY	SHEET NO.	SHEET	SHEET NO. S18
U.S. Rte. 6	Q	GRUNDY	86	57	OF 526 SHEETS
FED. ROAD DIST. NO. 7	PLAN	FED. AID PROJECT			

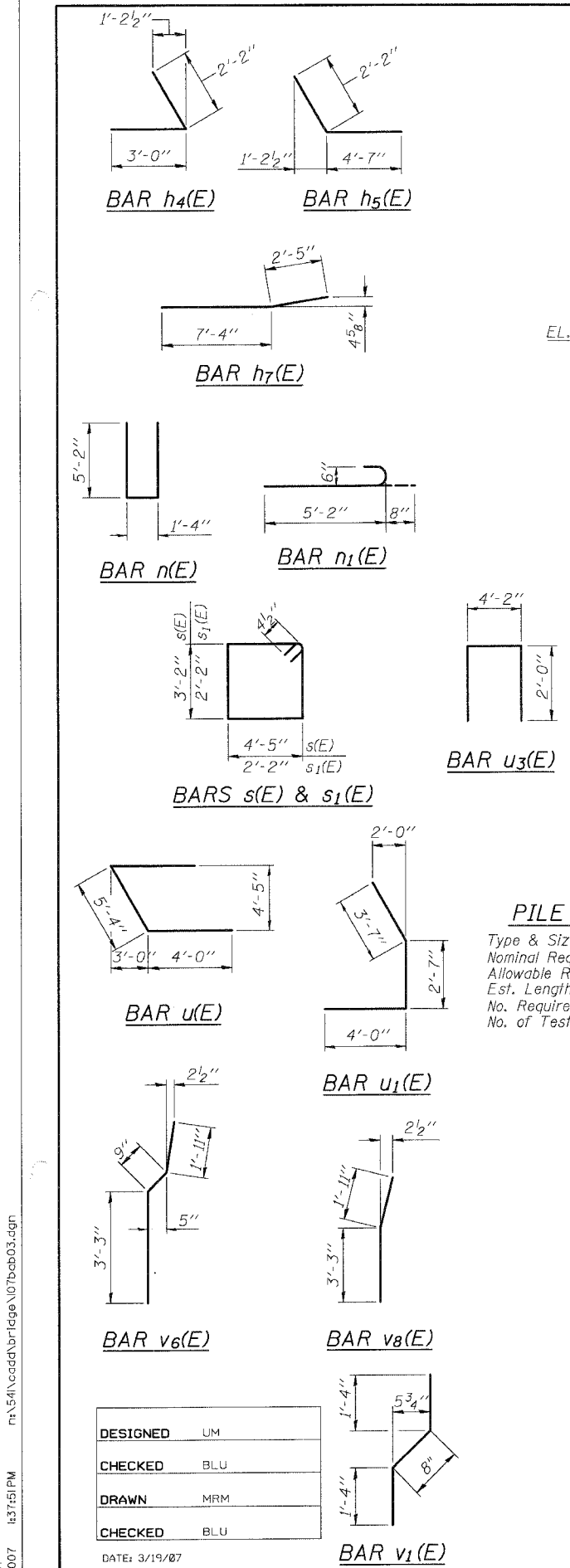
STATE OF ILLINOIS  
DEPARTMENT OF TRANSPORTATION

\*\*\*Alternate w/ v<sub>9</sub>(E) bars and place parallel to beams



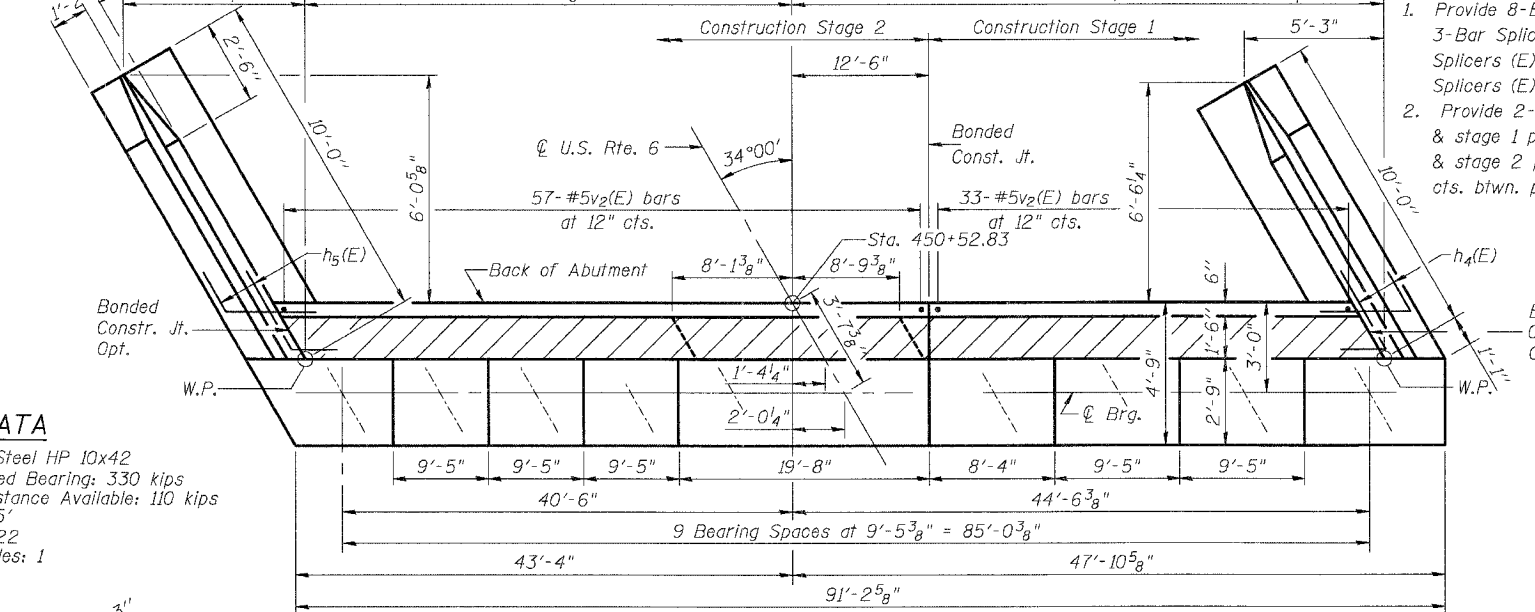
ELEVATION  
(Looking East)

- Notes:
- Provide 8-Bar Splicers (E) for #7 p<sub>11</sub>(E) bars, 3-Bar Splicers (E) for #5 h<sub>11</sub>(E) bars, 6-Bar Splicers (E) for #6 h<sub>16</sub>(E) bars.
  - Provide 2-#4 s(E) bars btwn. Const. Jt. & stage 1 pile, 4-#4 s(E) bars btwn. Const. Jt. & stage 2 pile. Provide 5-#4 s(E) bars @ 6" cts. btwn. piles spaced at 3'-3".

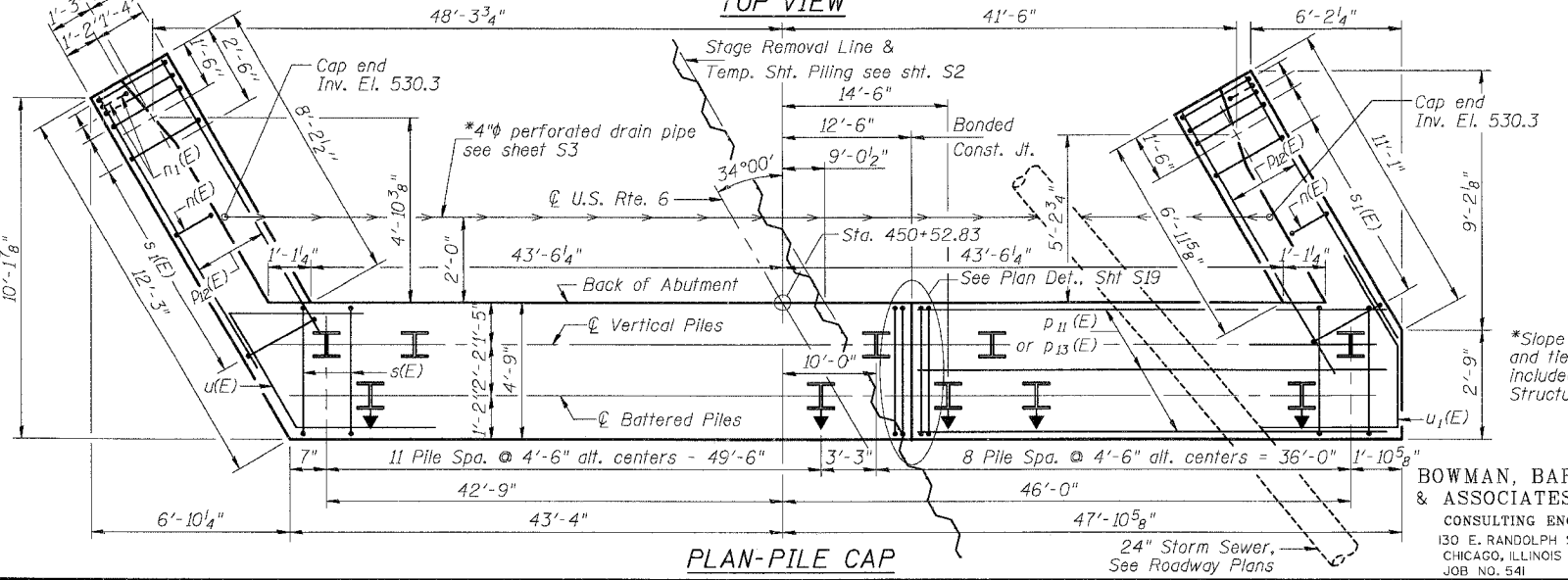


PILE DATA

Type & Size: Steel HP 10x42  
Nominal Required Bearing: 330 kips  
Allowable Resistance Available: 110 kips  
Est. Length: 15'  
No. Required: 22  
No. of Test Piles: 1



TOP VIEW



PLAN-PILE CAP

MIN. BAR LAP

#5	2'-2"
#6	2'-7"
#7	3'-5"

EAST ABUTMENT  
BILL OF MATERIAL

Bar	No.	Size	Length	Shape
h <sub>3</sub> (E)	12	#5	29'-9"	
h <sub>4</sub> (E)	12	#5	17'-11"	
h <sub>5</sub> (E)	8	#6	29'-9"	
h <sub>6</sub> (E)	8	#6	17'-11"	
h <sub>7</sub> (E)	8	#5	5'-2"	
h <sub>8</sub> (E)	8	#5	6'-9"	
h <sub>9</sub> (E)	16	#4	10'-9"	
h <sub>10</sub> (E)	16	#4	9'-9"	
h <sub>11</sub> (E)	3	#5	38'-2"	
h <sub>12</sub> (E)	3	#5	26'-10"	
h <sub>13</sub> (E)	3	#5	19'-2"	
n(E)	18	#6	11'-8"	
n <sub>1</sub> (E)	12	#6	5'-10"	
p <sub>13</sub> (E)	16	#7	30'-0"	
p <sub>11</sub> (E)	16	#7	19'-0"	
p <sub>12</sub> (E)	12	#7	10'-9"	
s(E)	121	#4	15'-11"	
s <sub>1</sub> (E)	28	#4	9'-5"	
u(E)	4	#6	13'-4"	
u <sub>1</sub> (E)	4	#6	10'-2"	
u <sub>3</sub> (E)	69	#5	8'-2"	
v <sub>9</sub> (E)	180	#4	4'-8"	
v <sub>1</sub> (E)	90	#4	3'-4"	
v <sub>2</sub> (E)	90	#5	2'-0"	
v <sub>6</sub> (E)	16	#6	5'-11"	
v <sub>7</sub> (E)	22	#6	5'-7"	
v <sub>8</sub> (E)	6	#6	5'-2"	
Structure Excavation		Cu. Yd.	155	
Concrete Structures		Cu. Yd.	81.8	
Reinforcement Bars, Epoxy Coated		Pound	7560	
Furnishing Steel Piles HP10x42		Foot	330	
Driving Piles		Foot	330	
Test Pile Steel HP10x42		Each	1	
Pile Shoes		Each	23	
Geocomposite Wall Drain		Sq. Yd.	53	
Bar Splicers		Each	97	
Concrete Sealer		Sq. Ft.	255	

Reinforcement bars designated (E) shall be epoxy coated.  
Bars indicated thus 8x2-#7 etc. indicate 8 lines of bars with 2 lengths per line.  
For Detail A & B see sheet S19.  
Space reinforcement in cap to miss anchor bolts.  
Pour steps monolithically with cap.  
The test pile shall be driven to 110 percent of the Nominal Required Bearing indicated in the pile data information.  
The steel H-piles shall be according to AASHTO M270 Grade 50.

EAST ABUTMENT  
U.S. ROUTE 6 OVER  
NETTLE CREEK  
FAU 5952-SEC. Q-BR  
GRUNDY COUNTY  
STATION 449+79.12  
S.N. 032-0107

BOWMAN, BARRETT & ASSOCIATES INC.  
CONSULTING ENGINEERS  
130 E. RANDOLPH STREET  
CHICAGO, ILLINOIS 60601  
JOB NO. 541

