

STATE OF ILLINOIS  
DEPARTMENT OF TRANSPORTATION

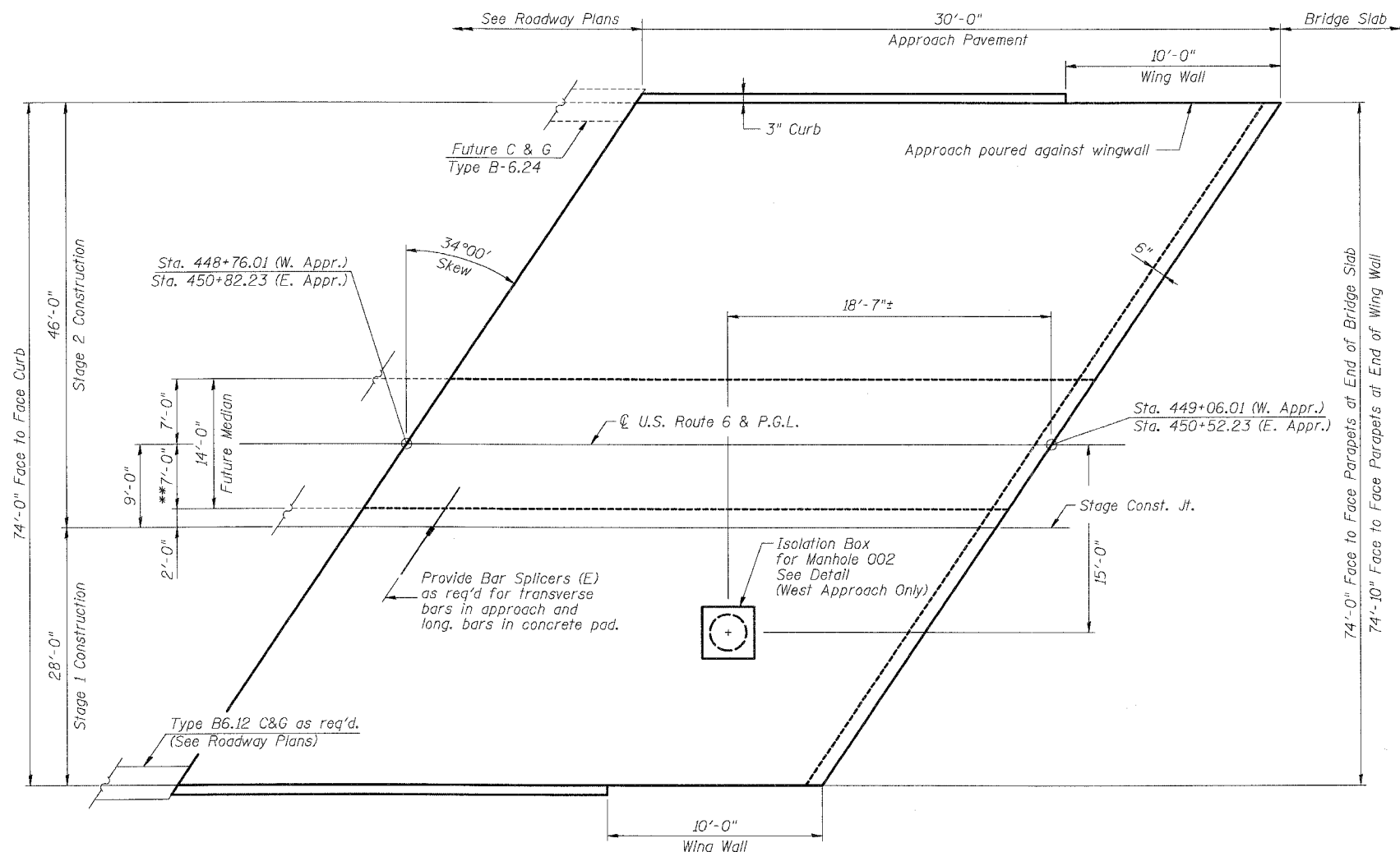
ROUTE NO.	SECTION	COUNTY	TOTAL SHEETS	SHEET NO.
S.B.L.	①	GRUNDY	86	61
F.A.L. 9982				OF 926 SHEETS
FED. ROAD DIST. NO. 7	ILL. PROJ. NO.	FED. AID PROJECT NO.		

Q-BR

BILL OF BARS

Bar	No.	Size	Length	Shape
a <sub>2</sub> (E)	8	#6	9'-0"	—
a <sub>3</sub> (E)	12	#9	16'-0"	U
b <sub>3</sub> (E)	14	#8	12'-6"	—
b <sub>4</sub> (E)	12	#9	1'-6"	—

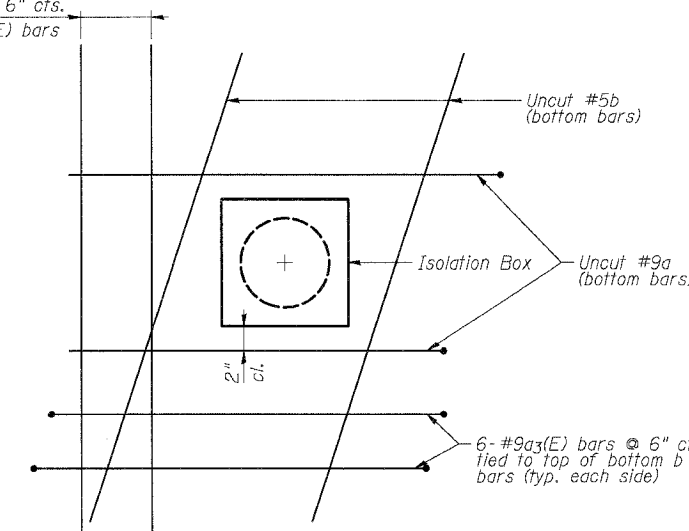
Reinforcement bars designated (E) shall be epoxy coated.  
The approach pavements shall be constructed according to the Bridge Approach Pavement Std. 420401 with the exception of those details shown herein.  
See Sheet S10 for approach pavement/bridge joint details.  
E.F. = Each Face  
Cost of all modifications shown on this sheet will be included with Bridge Approach Pavement.



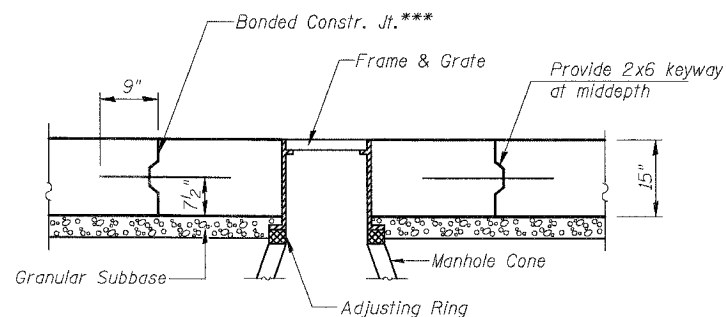
WEST APPROACH PAVEMENT PLAN  
(East Approach Similar Except as Noted)

\*\* Future Median Tapers to 4'-9 3/8"± offset at end of east approach, see Roadway Plans.

7- #8b<sub>3</sub>(E) bars @ 6" cts.  
Tied to top of a<sub>3</sub>(E) bars  
(typ. each side)



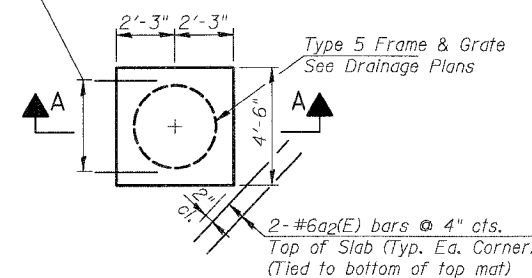
PLAN DETAIL



SECTION A-A

\*\*\*Saw cut and seal joint around perimeter as shown on Longitudinal Constr. Joint Detail in Std 420001.

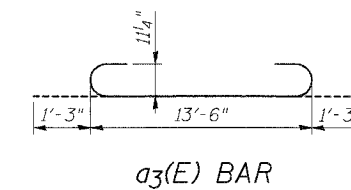
\*3- #9b<sub>4</sub>(E) bars  
(Typ. all sides)



ISOLATION BOX DETAIL

\*Cut bars in field to provide 2" min. cl. around frame.

Cut top reinforcement provided by Std 420401 to provide 2" min. cl. to isolation box. For each cut bar provide same number of full length bars on each side of isolation box equally spaced between uncut bars. See Plan Detail for bottom reinforcement modifications.



BRIDGE APPROACH PAVEMENT DETAILS

U.S. ROUTE 6 OVER  
NETTLE CREEK  
FAU 5952-SEC. Q-BR  
GRUNDY COUNTY  
STATION 449+79.12  
S.N. 032-0107

BOWMAN, BARRETT & ASSOCIATES INC.  
CONSULTING ENGINEERS  
130 E. RANDOLPH STREET  
CHICAGO, ILLINOIS 60601  
JOB NO. 541



DESIGNED	MRM
CHECKED	BLU
DRAWN	MRM
CHECKED	BLU

DATE: 3/19/07